

THE TAMESIDE
citizen

IN THIS ISSUE:

Tameside on the TV P7

Britain's favourite
market P13

What's on P23

Help shape future services

Executive Leader outlines financial challenges and choices that lie ahead, see page 4 and 5



Your dog can't clean up after itself...

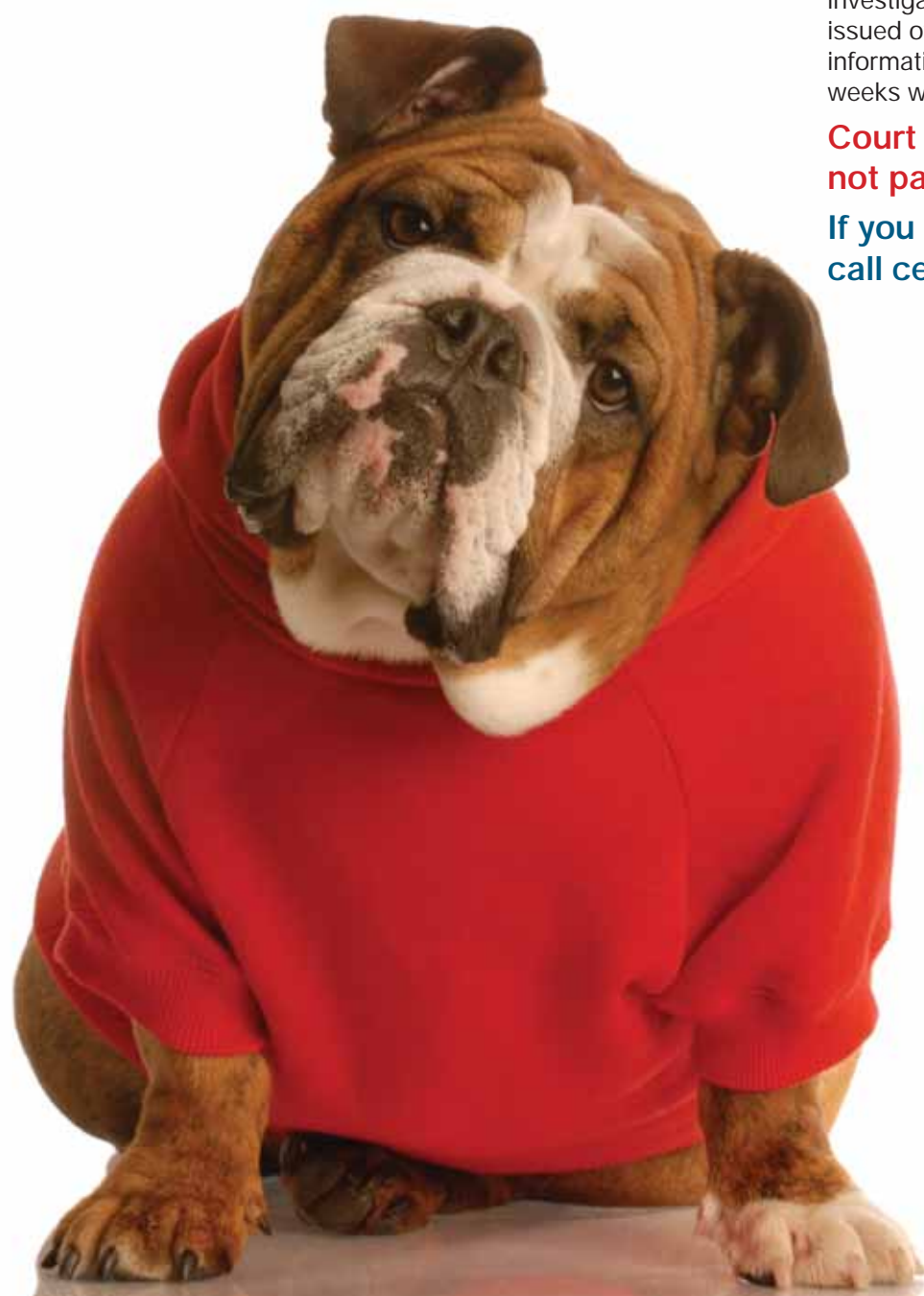
...it's your responsibility

Tameside Council has further stepped up action against irresponsible owners who fail to clear up after their dogs, or keep them under control in public spaces, as well as people who drop litter.

Enforcement staff have been acting on tip-offs from the public to investigate and fine offenders. In the last two weeks, the Council has issued over 20 fixed penalty notices for dog fouling alone on the back of information from residents. The clampdown will continue over the coming weeks with further high profile operations.

Court action will be taken against offenders who do not pay the fines.

If you wish to report an offender contact the council call centre on 0161 342 8355.





>> A spring day in Stamford Park

Welcome to the spring edition of the Tameside Citizen

2014 got off to a great start for the borough with the fantastic news that Ashton Market has been named Britain's favourite market following a national public vote. The market, which has also won a national eco award for the second year running has seen an influx of new customers on the back of the recognition – find out why it's proving so popular with visitors in our feature on p13.

There's further good news with the Executive Leader's announcement, on p4, of a Council Tax freeze to help ease the burden on struggling household budgets. He also highlights how the Council is continuing to work closely with the community and partners to provide services that mean the most to residents in these challenging financial times.

With the worst of the winter weather hopefully behind us and longer days to look forward to, now is the perfect time to get outdoors. Whether it's cycling (p18) or making the most of your local parks and green spaces and other cultural activities (p23), there's lots of inspiration here to entice you to go out. Don't forget you can also follow Tameside Council on Facebook and Twitter for the very latest updates on our events and services.



Tameside Citizen

Issue 68 | SPRING 2014

To advertise in our next issue...

Contact Darrell Beck at TMBC on
0161 342 3905 or email
darrell.beck@tameside.gov.uk

Pictured on the front cover:
 Countryside Easter event at Lower Higham
 Visitor Centre

Contents

- 04** Council Tax freeze
- 05** Don't forget to register
- 07** BBC calls the Council
- 08** Street Lighting
- 09** Stamford Park award
- 10** Recycling
- 11** Council Tax
- 12** Mini Mayor
- 13** Ashton Market success
- 14** News in Brief
- 15** Money Matters
- 17** Homelessness
- 18** Pedal Power
- 19** Live Well
- 21** Fostering
- 22** Pride of Tameside
- 23** What's On



07



13

Council Tax freeze to help households

THE Council has agreed a budget for 2014/15 that will see the borough's Council Tax frozen for the second time in three years to help ease the financial pressure on struggling Tameside households.

Despite the fact that central Government has given the Council significantly less money to spend per resident, this will not stop Tameside from continuing to invest in what matters - improving the life chances of our children, keeping the economy growing and our vulnerable children and adults safe.

Tameside Council will also be holding a series of public consultation events over the next few months to help residents understand the financial situation, shape our future services and be fully involved in the choices we have to make.



Cllr Kieran Quinn welcoming new business into Tameside, bringing 150 engineering jobs with plans for 100 more.

"We spend taxpayers' money and that's a responsibility we take very seriously. We think it's important to keep the Council Tax down and help struggling residents without compromising on protecting and keeping the most vulnerable safe.

Some of the decisions we have had to take are very tough but I am proud that we are still finding ways to make life better for local people. That means attracting new investment into the borough to provide new jobs and opportunities, especially for young people, as well as developing services to help address people's problems before they escalate".

Cllr Kieran Quinn
Executive Leader of the Council

Government funding reduction

Most of the money the Council has to spend on residents and services comes from Government grant funding. This is how it has been cut since 2010 and how we estimate it will be further reduced over the next three years.



The Executive Leader's budget statement pledges included:

- ✓ New rate relief scheme for town centre shops
- ✓ Tough action against rogue money lenders
- ✓ A cheaper alternative to payday loans
- ✓ More investment to help people live at home and avoid expensive care bills and hospital stays
- ✓ Investing in post 16 education through Vision Tameside – new campus in Ashton
- ✓ Putting services before buildings and saving £3 million whilst continuing to deliver valued services such as libraries
- ✓ Increase recycling rates avoiding landfill taxes and investing in jobs and services
- ✓ Building more homes for local people
- ✓ New apprentice opportunities for young people through the Tameside Apprentice Company
- ✓ Drive up housing standards in the private rental market



Crossing patrols stay in place

IT might say "stop" on their signs but it's a case of "all systems go" for Tameside's school crossing patrols.

Until the 31 March, Tameside's schools were able to collectively agree to use their Government funding to pay for a crossing patroller service. However, from 1 April, they can choose to opt out and spend their budget on something else.

In April last year, following a review using new Royal Society for the Prevention of Accidents guidelines, 32 crossing patrols were recommended out of the existing 53 manned points.

Tameside Council has worked with schools to help them understand the need and benefits of a crossing patrol. There is no legal obligation for schools to provide one but the Council is aware that crossing patrollers are highly valued by schools and parents.

The campaign has proved very successful and 49 (92%)

of existing crossing patrol points have been requested by schools - way in excess of the 32 recommended.

Even more positively, some schools which never had a crossing patroller have now asked the Council to get one for them so there will shortly be recruitment drive to find more staff.

Cllr Peter Robinson, Tameside Council's Executive Member for Transport, commented: *"This is an excellent outcome for road safety and at a cost of only £5,000 a year to provide a school crossing patroller represents great value for money whilst giving invaluable comfort to parents, schools and other road-users."*

"I'm really proud that the Council has been able to play its part in making sure the significant majority of school crossings patrollers will stay in place. The Borough's schools deserve great credit for putting children's health and wellbeing above other priorities."

Register today and have your say

ON 22 May Tameside residents aged 18 or over will have the chance to vote in this year's local and European elections.

If you are not registered to vote, you will be unable to take part and have your say over who will make important decisions on your behalf at local and European level.

Not appearing on a voter register could also affect your credit rating, which may lead to problems getting mortgages, mobile phone contracts and more.

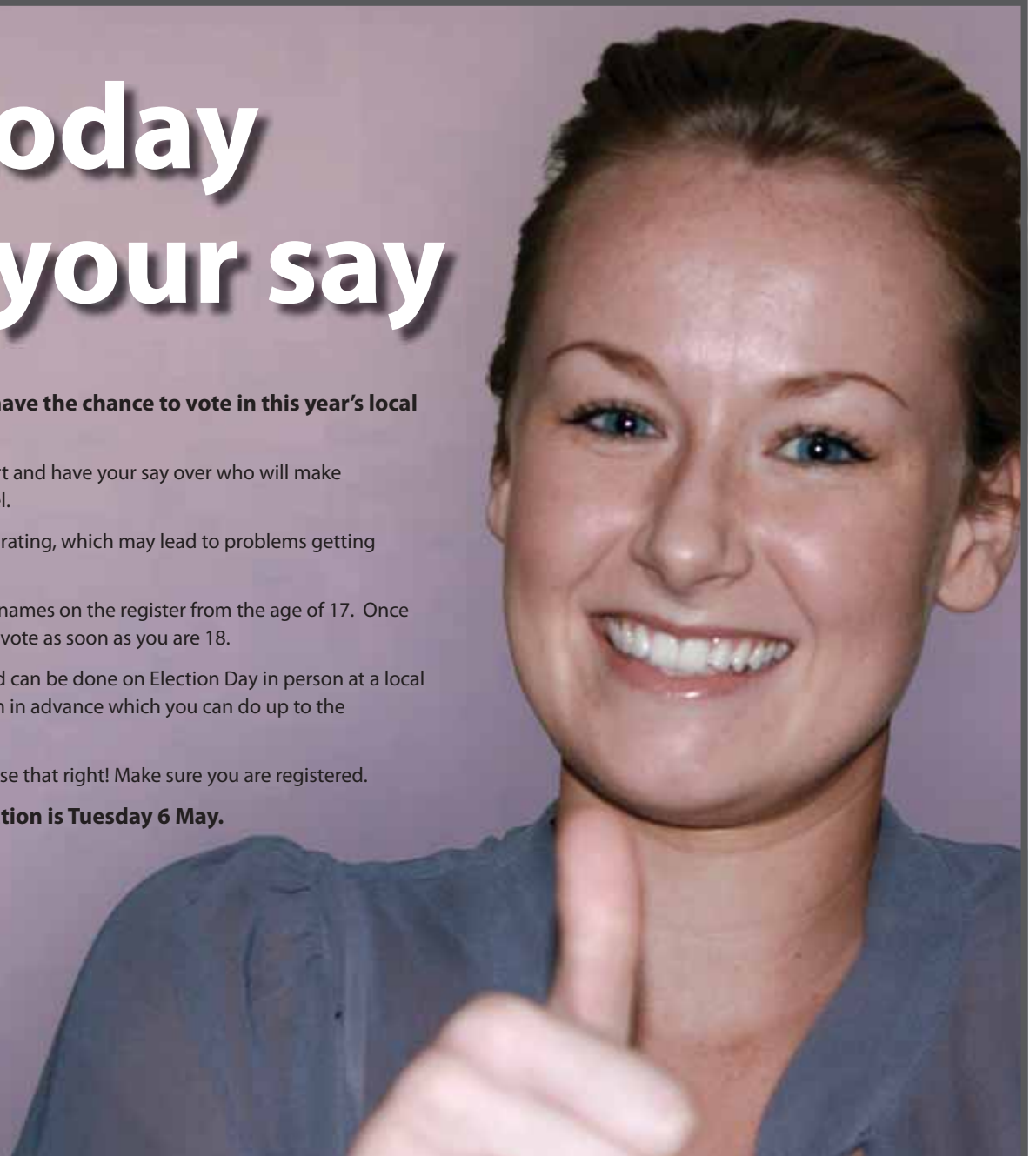
Although under-18s cannot vote, young people can put their names on the register from the age of 17. Once you have registered you will automatically become eligible to vote as soon as you are 18.

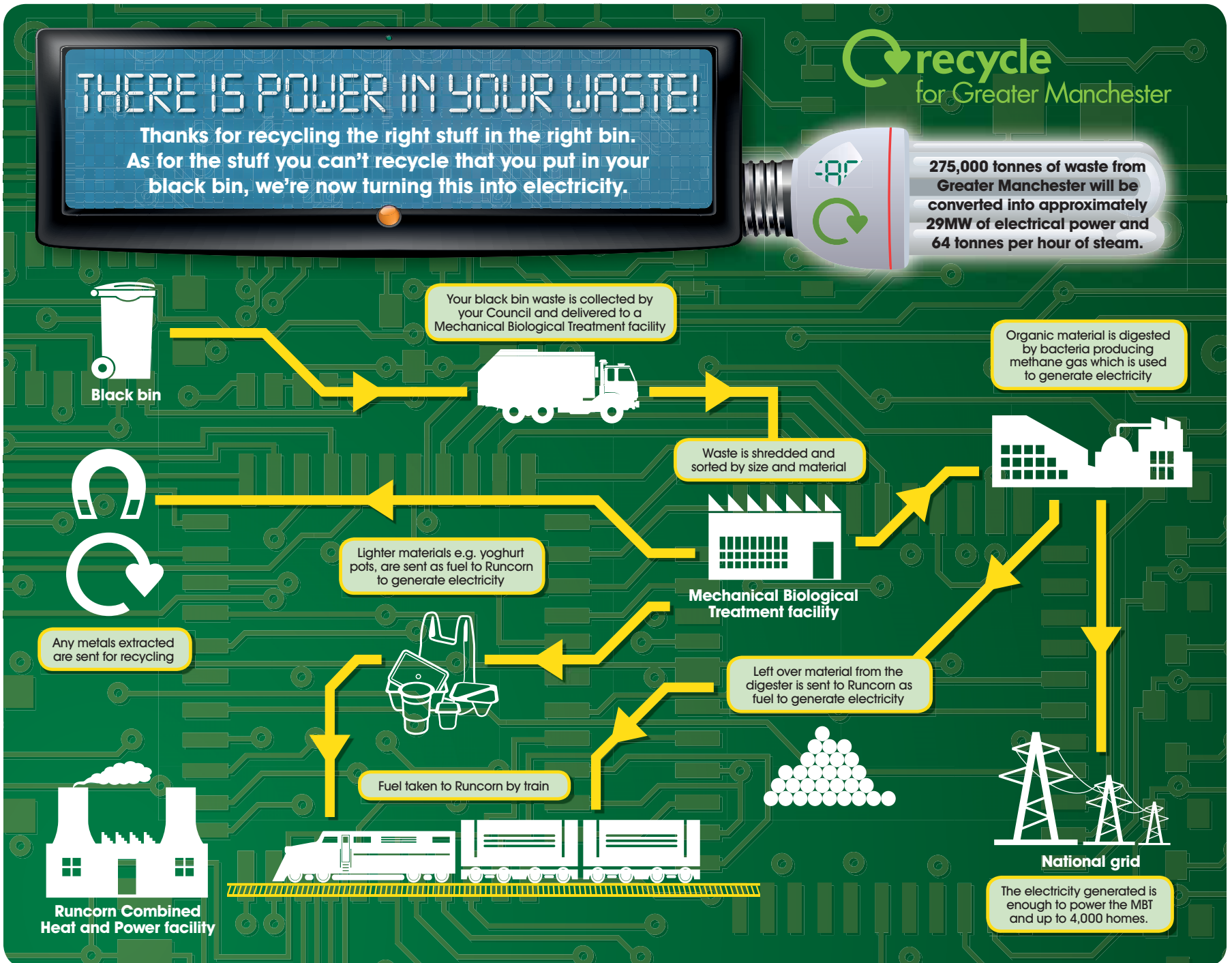
Once registered, actually casting a vote is a simple process and can be done on Election Day in person at a local polling station, or by requesting a postal vote application form in advance which you can do up to the 7 May 2014.

In a democratic society it is every adult's right to vote. Don't lose that right! Make sure you are registered.

The deadline to register your vote for this year's election is Tuesday 6 May.

To find out more about why you should register visit www.reasonstoregister.org.uk or for more general information about registering to vote visit www.tameside.gov.uk/elections/electors or call 0161 342 3036





Revive®
your garden this Spring

blended compost made with recycled household garden and food material
MULTI-PURPOSE COMPOST
PEAT FREE
www.recycleforgreatermanchester.com

You can now buy Revive, a multi purpose peat-free compost made from your food and garden waste.

Revive compost is available to buy in three sizes (All prices inc VAT):

| 20 litres | 40 litres | 60 litres |
|-----------------------------------|----------------------------------|----------------------------------|
| £1.50 | £2.84 | £4.00 |
| each | each | each |
| 4 x 20 litres bags = £4.99 | 4 x 40 litre bags = £9.98 | 3 x 60 litre bags = £9.97 |

Revive compost can be purchased from the following locations at the weighbridge points (where the commercial / council vehicles go):

| | | | |
|---|---|---|--|
| Bolton Raikes Lane Industrial Estate BL3 2NH Salford Road, Over Hulton BL5 1DG | Manchester Relliance Street, Newton Heath M40 3EZ Longley Lane, Sharston M22 4RQ | Rochdale Chichester Street OL16 2AU | Stockport Bredbury Parkway, Bredbury SK6 2QN |
| Bury Every Street, Fernhill BL9 5BE | Oldham Arkwright Street OL9 9LZ | Salford Cobden Street M6 6NA | Tameside Bayley Street, Stalybridge SK15 1PZ |



BBC calls the Council!

FROM rats to restaurant inspections, taxis to trading standard's swoops - a new BBC1 TV series will give an insight into how Tameside Council helps and protects local residents and businesses.

Named 'Call the Council' and due to be broadcast this spring, the new series follows officers in their varied and dedicated work in the community. The camera crews were given full access to see how committed individuals do an extraordinary job – often in testing circumstances.

They filmed pest control officer Brian Whelan (pictured) hunting for rats in dark, dingy basements and followed enforcement officers as they inspected and rated restaurants and takeaways.

They were also on hand to document flytipping enforcement officers as they helped Tameside residents clean up their neighbourhoods, do their best to keep fly-tippers away and support local people who are keen to keep their community clean and safe.

Series producer Dan Gooding said: *"It's been fascinating to witness other areas of the Council's work like licensing and bereavement services. We've followed licensing officers as they worked through the night making sure Tameside's taxis are roadworthy and safe for passengers and have been privileged enough to see the bereavement team help Tamesiders give their loved ones fond farewells at the crematorium.*

"These are just a handful of moments that you'll be able to watch when the new series starts and for me as a producer it's certainly been an eye opening experience. What's struck me most over the past months is the genuine dedication and devotion to duty that the council's officers possess. They are fiercely proud of the work they do and the community they serve...why else would they go rummaging through rotting rubbish or chase filthy rats into stinking cellars?"

Follow Tameside Council on Facebook [tameside.gov.uk/facebook](https://www.facebook.com/tameside.gov.uk) and Twitter [tameside.gov.uk/twitter](https://twitter.com/tameside.gov.uk)

for latest updates on when the series will be broadcast.

BRIGHT IDEA

for street lighting

LOW energy LED street lights are being trialled on a Tameside housing estate in a bid to save on rising electricity costs as well as carbon emissions.

If the pilot is successful then it may be rolled out across all residential/side streets in the borough over the next two years, achieving annual energy savings of more than £400,000 as well as helping to reduce maintenance costs.

The alternative would be to switch off some street lights – a decision some other councils have been forced to make in this current climate of rising costs against unprecedented budget cuts.

The pilot, which started in February, is taking place in and around the Hillary Road Estate, off Victoria Street, Newton, where

approximately 120 residential street lamps have been replaced with LED lamps.

Tameside Council Executive Member for Transport Cllr Peter Robinson said: *"We have always been innovative in looking at ways of reducing street lighting costs, but never has it been more crucial for us to invest in new technology to reduce costs and energy use in the long-term. The Council is facing the same huge price hikes for its electricity use as domestic users are."*

Residents are being consulted on their views via a questionnaire, which will go to all homes in the pilot area. Feedback from the police, community partners and other neighbouring authorities who have already trialled the technology will also be taken into account when measuring the success of the scheme.

Cllr Robinson fitting LED lamp



TALKING SAVES LIVES

BOWEL CANCER SCREENING... PASS IT ON!

If someone you know is 60+ don't let them leave their health to chance.

Encourage them to take part in the screening, it could save their life.

Around half the people over 60 who were sent Bowel Cancer Screening kits in Greater Manchester haven't returned them.

Call freephone

0800 707 6060

or email bowel.screening@uhcw.nhs.uk

Like us on www.facebook.com/cancer.screening

Follow us on www.twitter.com/BOWELSCREENING

60+
take the
test



www.bowelscreening.org/talk
www.cancerscreening.nhs.uk/bowel

NHS

Bowel Cancer Screening Programme

Award for historic renovation

STAMFORD Park has won a second national prize to add to the Royal Institution of British Architects (RIBA) Award it received last summer.

P Casey (Land Reclamation), the company which carried out £4 million of improvement works funded by a Heritage Lottery Fund grant, has won a British Association of Landscape Industries Award after being judged best in the restoration and regeneration category.

The aim of the project was to improve the best Victorian elements of the park, which straddles the Stalybridge – Ashton boundary, while providing first-class facilities. Among these are the Highfield Pavilion which the judges described as the heartbeat of the park for users of all ages.

Other improvements include a popular water feature, landscaped terraces next to the pavilion which provide a great spot for picnicking, enhanced permanent planting and restoration of the monuments and memorials.

Lottery funding also paid for less glamorous but still essential work such as path resurfacing and drainage improvement.

Tameside Council's Executive Member for Neighbourhoods, Cllr Lynn Travis said: *"This is splendid news and the awards are a welcome acknowledgement of the redevelopment of the park, which we know is important to our residents. The main sign of success is the increased number of visitors. People still enjoy a day in the park just as much as previous generations."*





Waste not want not

TAMESIDE residents are helping to avoid millions of pounds in landfill costs by recycling their food leftovers.

Brown bin recycling has gone up by a third since the Council started recycling food waste alongside garden waste four years ago.

In the last year alone, this hugely increased recycling effort has helped the borough avoid nearly £4 million in landfill charges – protecting severely limited funds for essential frontline services as well as rewarding valued community projects through the You Choose scheme.

The Council has tried to make it as easy and convenient as possible for households to recycle their food waste by introducing free kitchen caddies with free compostable liners to store leftovers before putting them in the brown bin.

Residents can request further free rolls of caddy liners by simply tying a bag to the handle of their brown bin when they present it for its weekly collection.

This is an especially busy time of year for brown bin recycling as people tidy their gardens for spring. All green waste – such as grass cuttings, weeds and hedge trimmings – can go in the brown bin alongside food waste.

Households that don't have a brown bin or kitchen caddy, but who would like one, can order one at tameside.gov.uk/recycling

What can go in your brown bin?

✓ Yes please:

- Food and kitchen waste
- Grass cuttings
- Leaves
- Dead plants
- Hedge trimmings
- Small twigs
- Weeds
- Small branches
- Pet bedding (eg sawdust, hay)

✗ No thanks:

- Soil or turf
- Stones/hardcore
- Flowerpots/seed trays
- Large branches
- Wood
- Household waste
- Metal or glass objects
- Plastic bags

Your Council Tax explained



RESIDENTS are being urged to check and pay their Council Tax bills, which recently came through letterboxes.

If you don't think the amount showing on your bill is correct get in touch straight away with the Council Tax Service on 342 2015. You should also contact the service immediately if you are having difficulties paying to help avoid extra costs being added to your account for late payment.

Council Tax advisors can check your bill is correct, identify any reductions you may be

entitled to and arrange for you to pay your bill either by weekly, fortnightly or monthly instalments.

Please see the reverse of your bill for information on the variety of ways you can make payment – these are by:

- Direct debit
- Debit card
- Credit card
- Standing Order
- Bacs payment
- Post Office/Paypoint/Payzone

How much will you have to pay?

If you are having difficulties in paying and want to avoid extra costs being added to your account for late payments then get in touch now.

See the table below for details on how much you will have to pay. Your bill may be lower than the amount here if you are entitled to any reductions or exemptions.

| ProProperty Valuation Band | Tameside £ | Mossley £ |
|--|------------|-----------|
| A (Up to and including £40,000) | 946.40 | 951.10 |
| B (£40,001 - £52,000) | 1104.14 | 1109.62 |
| C (£52,001 - £68,000) | 1261.87 | 1268.14 |
| D (£68,001 - £88,000) | 1419.61 | 1426.66 |
| E (£88,001 - £120,000) | 1735.07 | 1743.69 |
| F (£120,001 - £160,000) | 2050.54 | 2060.72 |
| G (£160,001 - £320,000) | 2366.01 | 2377.76 |
| H (More than £320,000) | 2839.22 | 2853.32 |

If a discount is shown on your bill which you are no longer entitled to due to a change in circumstance, you will need to advise the Council Tax Service on 342 2015 immediately of the change affecting your entitlement.

Important further information regarding your Council Tax bill can be found on the Councils website at tameside.gov.uk/counciltax



How your weekly Council Tax is spent

Figures shown for a Band A property which is the rate that more than half the households in Tameside pay

- looking after vulnerable adults
- looking after vulnerable children
- contribution to Greater Manchester Police
- infrastructure costs (highways, school buildings)
- looking after parks, libraries, street cleaning and the homeless
- cost of disposing of black bin waste
- contribution to Greater Manchester Transport for buses, trains etc
- public health
- contribution to Greater Manchester Fire and Rescue
- supporting local schools
- looking after our buildings and land assets
- waste collection
- helping the economy and creating jobs

- £5.10
- £2.23
- £1.95
- £1.68
- £1.64
- £1.45
- £1.43
- £1.01
- £0.74
- £0.43
- £0.23
- £0.17
- £0.14
- =====
- £18.20

Riley makes his mark

MINI-mayor Riley Outram wrote his name in the history books when he took part in an event to mark the refurbishment of Hurst Cross, Ashton.

The 10-year-old Rosehill School pupil helped to place two time capsules in the base of the monument. One was the original Victorian bottle, put there when the cross was built in 1868. The other was a metal cylinder containing books, papers and a specially commissioned Ashton United programme.

Riley received help from Cllr Peter Robinson, Executive Member for Transport, ward members Cllrs Alan Whitehead and Leigh Drennan as well as scouts and representatives of Hurst Cross Garage and Ashton United FC. Looking on were pupils from Rosehill and St Christopher's schools.

The cross, which stands at the junction of Lees Road and Kings Road, Ashton, has been moved to a new position to make the area safer for drivers and pedestrians. The new road lay-out and pedestrian crossings have been paid for with a grant.

Hurst Cross itself has been moved 40ft. The area around it will be landscaped and there will be enhanced lighting to make the monument a more prominent feature.



**BEEVER *and*
STRUTHERS**
CHARTERED ACCOUNTANTS
& BUSINESS ADVISORS

"Anyone may arrange their affairs so that their taxes shall be as low as possible."

Learned Hand, Judge, US Circuit Court of Appeals (1872-1961)

- CORPORATE TAX
- PERSONAL TAX
- INDIRECT TAX
- TRANSACTION TAX
- INTERNATIONAL TAX
- TAX INVESTIGATIONS
- EMPLOYER/PAYROLL
- PUBLIC SECTOR CONSULTANCY
- VAT SERVICES
- TAX PLANNING & WEALTH MANAGEMENT

HEAD OFFICE: MANCHESTER

0161 832 4901

tax@beeverstruthers.co.uk

www.beeverstruthers.co.uk



Ashton Market... ...the best of British!

ASHTON Market is celebrating double acclaim after winning two national awards.

The market has been named Britain's favourite market after winning the highest number of public votes in a competition run by the National Association of British Market Authorities (NABMA).

It has also won the National Federation of Market Traders Britain's greenest market title for the second year running.

Deputy Executive Leader, Cllr John Taylor, who is responsible for markets, said: *"The success and recognition in both national award schemes is a testament to the enthusiasm, innovation*

and hard work being ploughed into Ashton Market to ensure it is vibrant, attractive and sustainable for the future. I would like to thank traders and staff for their drive and commitment and – importantly – shoppers for their loyal support."

While the historic Ashton Market retains traditional values of offering quality goods at competitive prices, it is also forward-thinking and moves with the times. The beautifully renovated market hall has free wi-fi and a food court seating area to increase its appeal for business and social meetings.

The vibrant market holds regular special events, such as the monthly farmers' market as well as the hugely successful Christmas Market

– which promises to be even bigger and better this year.

Ashton Market has a strong environmental ethos which has clearly led to it being named Britain's greenest market for two years in a row.

Schemes such as the new recycling hub - which make it easier for tenants and visitors to access the recycling facilities and recycling litter bins, impressed judges and have led to the market reducing waste by a huge 70% over the last four years.

To find out more about Ashton Market visit tameside.gov.uk/ashtonmarket You can also follow Ashton Market & Farmers' Market on Facebook for latest news, offers and events.



Mayor thanks Christmas cabin students

STUDENTS who gained valuable work experience building the traditional cabins for Ashton Christmas Market have been thanked for their contribution.

The Tameside College trainees were invited by the Civic Mayor, Cllr Joe Kitchen, to Ashton Town Hall in recognition of their contribution to the successful two week event.

More than 50 students – studying a variety of subjects from engineering and welding to carpentry and plumbing – used products sourced from Tameside suppliers and worked alongside skilled professionals

to construct the 30 wooden cabins that formed the Christmas market.

Plans are already in place to use the cabins for an even bigger and better Christmas market for 2014 as well as a number of other special events in other town centres throughout the year.

Cllr Kitchen said: *“One of the key highlights of the Christmas market was the active involvements of the local community and it was particularly pleasing to see the students gain valuable work experience in creating the cabins, which looked fantastic and will be used for years to come.”*



FOLLOWING the success of Tameside’s Christmas Market Tameside Council is planning a new egg-tra special shopping event.

Droylsden Easter Market will be held in Villemomble Square from Thursday 17 to Saturday 19 April 10am to 6.30pm offering an array of stalls, activities and entertainment.

As well as approximately 20 traditional cabin stalls – as used at the Christmas event – the market will include circus workshops, face painting, archery, an animal petting corner, an Easter bonnet competition and an egg hunt among its many fun attractions. There will also be live music and dance performances as well as a giant walk-about T-Rex. For more information see www.droylsdeneastermarket.co.uk

Exhibitions

Open All Hours

A look at local shops and how our shopping habits have changed over the past century. Portland Basin Museum, Ashton

Souvenirs and Epiphanies

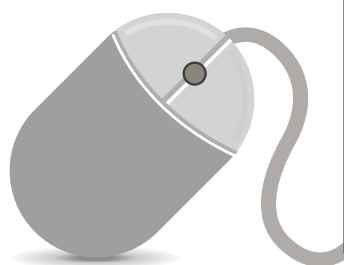
By local artist Christine Anderson, Central Art Gallery, Old Street, Ashton.

Men Behind the Medals

The Museum of the Manchester Regiment holds hundreds of medals. This exhibition looks at the stories behind them. Ashton Town Hall.



An easy way to keep track of payments and benefits



TAMESIDE residents can now take advantage of the Council’s revenues and benefits on-line selfservice facilities for council tax, business rates, housing benefit and council tax support.

Self-service is easy and is just a few clicks away and is similar to on-line banking. All you have to do is answer a few short questions relating specifically to you. You can then view when your next payment is due, sign up to pay a bill by direct debit, make a payment on-line or even change address on-line.

If you are receiving housing benefit and

council tax support you can view the amount of benefit you receive, see details of how entitlement is calculated, next payment date, and view correspondence.

If you require any assistance signing up to one of our online services you can contact us at revenuessystemsteam@tameside.gov.uk and a member of our staff will contact you, or contact us on 0161 342 2243.

Why not pay your council tax or business rates bill by direct debit? You can switch to the new e-billing service on-line. It’s quick and easy, saves paper, printing and postage, so it’s good for the environment too.

MONEY MATTERS

MiNTed

ARE you 16-24 years old and a social housing tenant? Do you want to know more about how to manage your money while running your home?

MiNTed 16-24 is a free service dedicated to helping you make sense of your money in partnership with MiNT members, Tameside Citizen Advice Bureau, Tameside Council, Ashton Pioneer Homes, New Charter, Irwell Valley, Regenda, Symphony Housing and Your Housing Group. It is funded by the BIG Lottery Fund.

You will be given ideas about how to save and how to make the most of your money through one-to-one support, group workshops, weekly drop ins and social media.

So how does it work?

1. Have a chat with your housing officer or contact MiNTed directly to discuss being referred to the project.
2. A one-to-one discussion will be arranged with one of the money mentors and you will be helped to draw up an individual learning plan.
3. You will then be guided through your plan through either group workshops or at home to meet your money management needs. Various topics will be covered including:
 - Planning and budgeting
 - How to save money
 - Income maximisation
 - Understanding and dealing with bills
 - Making good financial choices
 - Getting best deals for your money
 - Banking and saving
 - Credit and loans plus much more
4. Opportunities are also available for you to get involved with the project through volunteering and helping others while increasing your own skills.

Get in touch

7 Wellington Street, Ashton-under-Lyne, OL6 6AJ

Tel: 0161 711 0091

Email: minted@tamesidecab.org.uk

Facebook: MiNTed Tameside

Twitter: @MintedTameside



Benefit problems?

If your claim for social security benefits has been refused or stopped, the Council's Welfare Rights team can help with your appeal. Contact the Freephone advice line on 0800 074 9985 on Monday, Wednesday or Thursday morning between 9:30 to 12:30 to speak to an adviser or go to tameside.gov.uk/welfare-rights for more information.



We're closing in

with hundreds of benefit thieves being reported



If you suspect someone of benefit fraud in your area

Tel: 0161 342 3728 Fraud Hotline: 0800 328 6340



www.tameside.gov.uk/benefitfraud



LOVE
Recycling
HATE
Landfill



Download our free app to check your refuse collection dates, set up an alert to remind you which bins to put out for collection and report any missed bins.

App now available in the Apple App Store or the Google Play Store for Android.



Saving money by recycling more... It's in your hands



Ed Cross, who was supported by the Threshold accommodation scheme to find and manage a home

Working together to tackle homelessness

TAMESIDE Council and partners have helped over 1000 households stay in their own home in the last two years.

Without this support, many of those affected would have ended up homeless.

This approach, which forms part of the Council's Homelessness Prevention Strategy, has also helped avoid the huge social costs associated with homelessness.

Executive Member of Health and Neighbourhoods Cllr Lynn Travis said: *"There are numerous causes of homelessness including relationship breakdown, financial difficulties, health problems and living in unsuitable, overcrowded accommodation. If you have any concerns that you may be facing homelessness in the future then seek help from Tameside Housing Advice Service as soon as you can. This will help them provide a much broader range of options to help."*

One person who has benefitted from this support is 21-year-old Ed Cross, who moved to Ashton from London to be closer to his grandmother. He received help from Threshold, a housing support charity that works with the Council to support vulnerable people to achieve greater independence and wellbeing.

Ed said: *"I moved into Threshold's supported housing as living with my grandmother didn't quite work out. My support worker helped me to address some things that I wasn't great at – I was rubbish with my money, I didn't have the skills to manage my own home and I struggled with some relationships. They really guided me to look at aspects of my life and encouraged me to go on a skillshare, which really helped me to build my skills but most importantly my confidence."*

The Tameside Housing Advice team can be contacted on 0161 331 2700.



Pushing pedal power

THE wheels are in motion for a package of new measures to help more Tameside residents enjoy the health and financial benefits of cycling.

Tameside Council, working in partnership with Transport for Greater Manchester (TfGM), is developing a number of schemes to make it easier and safer for people to get on their bikes. The work is also part of a wider programme to promote more sustainable travel to ease congestion, improve the local environment and reduce the borough's carbon footprint.

The new Hyde to Ashton cycle route is well underway and due to open later in the spring. The route is mainly off road and links the two centres along the Peak Forest Canal from Manchester Road area in Hyde to Margaret Street in Ashton.

Following on from this will be the development of a route to link Ashton Town Centre and Guide Bridge to Manchester City Centre along the Ashton Canal, due to be completed by March 2015. The Council has

attracted external funding for both schemes from the Government's Cycle City Ambition grant with partners TfGM and Sustrans. Sustrans is the leading UK charity enabling people to travel by foot, bike or public transport.

As well as developing safe routes, the Council provides training for budding cyclists to equip them with the necessary skills, knowledge and confidence to make more journeys by bike. There's Bikeability training for all primary school children while TfGM funds adult cycle courses in Tameside.

Details of training dates can be found at: <http://cycling.tfgm.com>

New cycle pods are being introduced across Greater Manchester to provide secure and convenient storage for commuters and other bike users. The Ashton Pod is next

to Ashton Pools on Water Street.

And, to help improve cycle safety, a number of Trixi mirrors are being introduced at key junctions to give drivers of large vehicles better visibility of cyclists. In Tameside, the first set has been installed at the Mossley Road junction with Darnton Road, Ashton, and there are more to follow.

For those who want to keep fit but are not quite ready to take to the road just yet, Tameside Sports Trust has recently opened a state-of-the-art cycle studio at the Copley Centre, Stalybridge. The new studio is already proving very popular – it offers over 35 cycle classes a week to both members and non-members with technology giving cyclists the chance to “ride” through over 100 destinations around the world. For more information see tamesidesportstrust.com



Five ways to improve your health

WELLBEING is about functioning well and feeling good. People that have better wellbeing tend to have happier, healthier and longer lives. Our wellbeing changes from day to day, but there are things we can do to help ourselves have more good days.

The 5 Ways to Wellbeing is a tried and tested method that can help people improve their wellbeing. The focus is not about what we need to stop doing, but about what we can do more of to make our life more interesting, satisfying and enjoyable. The 5 ways are:

- **Connect**
- **Be active**
- **Take notice**
- **Keep learning**
- **Give**

Over the next year there will be a range of features with a 5 Ways to Wellbeing theme, which will explain more about The 5 Ways and what they are. The Director of Public Health's Annual Report this year provides some examples of how people and community groups in Tameside are already taking up a whole range of actions and activities to improve their wellbeing. For more information and ideas, and to read the report visit:

tameside.gov.uk/5waystowellbeing



Spotlight on 5 ways to better health



Connect

With the people around you. With family, friends, colleagues and neighbours. At home, work, school or in your local community. Think of these as the cornerstones of your life and invest time in developing them. Building these connections will support and enrich you every day.



Be Active

Go for a walk or run. Step outside. Cycle. Play a game. Garden. Dance. Exercising makes you feel good. Most importantly, discover a physical activity you enjoy and that suits your level of mobility and fitness.



Take Notice

Catch sight of the beautiful. Remark on the unusual. Notice the changing seasons. Savour the moment, whether you are walking to work, eating lunch or talking to friends. Be aware of the world around you and what you are feeling. Reflecting on your experiences will help you appreciate what matters to you.



Keep Learning

Try something new. Rediscover an old interest. Sign up for that course. Take on a different responsibility at work. Fix a bike. Learn to play an instrument or how to cook your favourite food. Set a challenge you will enjoy achieving. Learning new things will make you more confident as well as being fun.



Give

Do something nice for a friend, or a stranger. Thank someone. Smile. Volunteer your time. Join a community group. Look out, as well as in. Seeing yourself, and your happiness, linked to the wider community can be incredibly rewarding and creates connections with the people around you.



Put the Right Stuff in the Right Bin

Only this stuff goes in your green bin.



Only this stuff goes in your blue bin.



Only this stuff goes in your brown bin.



To make sure we keep on making high quality compost please only use compostable liners for your food caddy with this seedling logo. Alternatively, you can put your food waste loose inside your food and garden recycling bin.

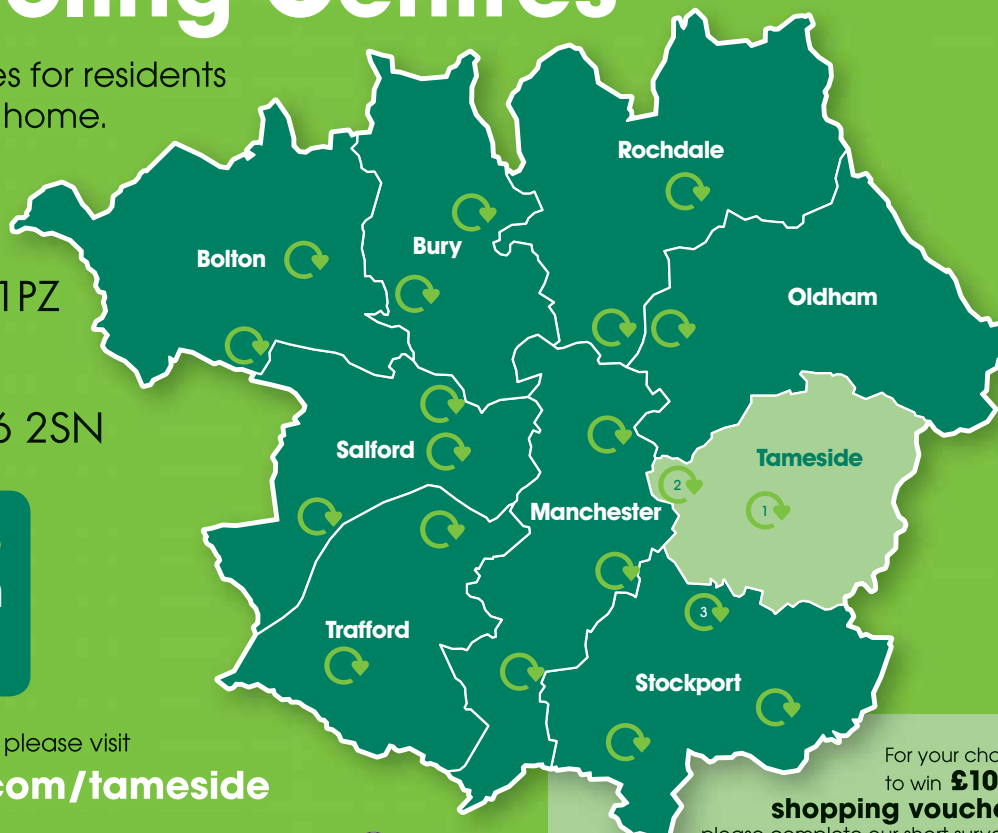
Your local Recycling Centres

We have a network of 20 Recycling Centres for residents to recycle and dispose of waste from their home.

You can use any of them, however your nearest Recycling Centres are:

1. Bayley Street, Stalybridge SK15 1PZ
2. Ash Road, Droylsden M43 6QU
3. Bredbury Parkway, Bredbury SK6 2SN

Spring/Summer Time Opening Hours
Monday – Sunday: **8am – 8pm**
from 30th March 2014



For a full list of what you can take to your Recycling Centre, please visit www.recycleforgreatermanchester.com/tameside

 /Recycle for Greater Manchester
  /recycle4gm
  /Recycle for Greater Manchester
  /r4gm

For your chance to win **£100** of shopping vouchers, please complete our short survey at www.manchestereveningnews.co.uk/survey

Could you foster a teenager?

LOOKING after challenging teenagers is a demanding job but foster carers Helen and Clare are embracing the task.

They are piloting a new project to recruit specialist foster carers for children with emotional and behavioural difficulties, who would otherwise be living in residential care. These carers will receive intensive training and 24 hour support and a weekly allowance of £500.

Helen said: *"We thought we could make a lasting difference to the young people at such an important phase of their lives. In our teenage years neither of us had this kind of support and we know how much more difficult it is to be alone without someone to believe in you."*

"We all know what it was like being a teenager, no longer a child, not an adult. Yes they can be moody, they have attitude, they push the boundaries, but that's what being a teenager is all about. Remember they need to trust you as much as you need to trust them."

Helen explained what difference being a specialist foster carer to a teenager can make: *"They might not show it, but they will remember and you will have the satisfaction of knowing that you were there for them and tried to guide them on the path to adulthood. You'll also learn again how to be a teenager again, have fun at the fairground, ride bikes, laugh at silly jokes, get to know the words to the latest songs and know what to wear!"*

Executive Member for Children and Families, Cllr Allison Gwynne: *"We need individuals or couples with experience who have the right skills and aptitude to parent teenagers into adulthood for at least 18 months and cope with the young person's difficulties while providing a steady influence. One foster carer must be available on a full-time basis due to the intensive support needed by the young person."*

To find out more visit tameside.gov.uk/fostering

*Names have been changed to protect the identity of foster carers.

Specialist Fostering Scheme

Could you give a young person a stable family home? Have you got patience and resilience to help a young person through the most crucial years of their lives? Have you ever considered Fostering?

Tameside Fostering Service is looking for enthusiastic people who have skills and the aptitude in parenting teenagers into adulthood.

An attractive allowance of up to £500 per week plus child specific allowances, intensive support to carers who can care for challenging and complex children and access to training.

For further information visit:

www.tameside.gov.uk/fostering or call 0161 368 8865



BUSINESS AWARDS 2014

BUSINESS leaders are once again joining forces with the Council to promote pride across Tameside.

Since 2011 the Pride of Tameside Business Awards have been celebrating the economic success of the borough's hard-working companies.

This year's presentation ceremony takes place at the Jubilee Hall, Dukinfield, on Friday, 6 June, and nominations are invited for the following categories:

- Apprentice provider of the year
- Giving Something Back
- Digital business of the year
- Manufacturing and Service Provider of the year
- Retail Business of the year
- Start-up business of the year

Additionally, the judging panel will give awards for the following categories (nominations not necessary):

- Community Engagement
- Business of the year
- Buy With Confidence Trader of the Year
- Special Recognition

For a time table of events, application forms and sponsorship package details, visit prideoftameside.co.uk/2014/business



Pictured: Last year's business award winners

SPORTS AWARDS 2014

THE search is on for Tameside's sports personalities of the year.

Tameside Sports Trust launched its annual sports awards on Monday 3 March, and is looking for Tameside's top sports performers.

The annual Pride of Tameside Sports Awards has seven categories and the trust is hoping that last year's figure of more than 100 nominations will be beaten.

All winners of the borough's sports awards go forward to represent Tameside at the Greater Manchester Sports Awards in November.

More than 30 sports were represented in last year's Tameside nominations, ranging from fencing and 10-pin bowling to triathlon and football.

One of the 2013 Tameside winners, Georgia Taylor-Brown, a 19-year-old champion triathlete, went on to win the Greater Manchester Sports Achiever of the Year.

The seven categories for which people and clubs can be nominated are: coach of the year, sports achiever of the year, disabled sports achiever of the year, Alex Williams volunteer of the year, unsung hero of the year, club of the year and the changing lifestyle special recognition award.

The deadline for nominations is 31 July. The awards ceremony will on 12 September at the Jubilee Hall, Dukinfield.

Andy Dwyer from Tameside Sports Trust who runs the awards scheme, said: "The Tameside Sports Awards mirror the BBC's sports personality of the year awards.

"We are looking for sportsmen and women, officials, coaches and clubs who excel in their field. If you are involved in coaching, volunteering, playing, officiating or being part of the backroom team that runs a sports club we want to hear from you.

"There are hundreds of Tameside sportspeople who have given their time and commitment to sport and these awards are a way in which that dedication can be recognised and congratulated to celebrate the sporting community of Tameside."

To find out more and to submit a nomination visit tamesidesportstrust.com



What's On in Tameside

6 April

KITE: Kids in the Environment

Fun, forest activities for seven to 12 year olds. First Sunday of every month. **Park Bridge Heritage Centre. 10am - noon.**

Also on 4 May.

Station Walk

Take the 1.05pm train (£1.50 approx) to Broadbottom and walk the three miles to Godley through Back Wood and over Werneth Low. **Meet 1pm at Godley Station, Mottram Road, Hyde. 3 hours.**

8 April

Jolly Holidays

Artist-led craft activities. **50p per child. 11am - 3pm. Portland Basin Museum, Ashton.**

Also on 9 April, 15 April, 27 May, and 29 May.

Go Wild

A fun day in the countryside for families. Den building, river dipping, mini-beast safari and woodland crafts. **1 - 3pm. Park Bridge Heritage Centre.**

Also on 9 April, 15 April, 17 April and 29 May.



13 April

Birdwalk

Discover the birdlife of the Medlock Valley on this gentle stroll. **Meet 10.30am. Park Bridge Heritage Centre. 2 hours.**

16 April

Tameside History Club

John Irwin of Tameside Allotments Federation recounts the history of allotments.

2pm. Tameside Local Studies and Archives Centre, Cotton Street, Ashton. 0161 342 4242.

20 April

Easter Egg Hunt

Easter Sunday fun for younger children. There will also be competitions for the best-dressed Easter egg and bonnet.

1 - 3pm. Lower Higham Visitor Centre, Higham Lane, Gee Cross.

21 April

Easter Monday Fun Day

A fun-packed family day. View our displays and get creative.

11am - 3pm. Portland Basin Museum.

27 April

Chadkirk Chapel Ramble

A 10-mile walk across wild, windswept Werneth Low to the historic delights of Chadkirk Chapel and then back via Etherow Country Park. **Meet 10am. Lower Higham Visitor Centre, Higham Lane, Gee Cross. 5½ hours.**

Tulip Sunday

See Stamford Park on the Ashton - Stalybridge border in all its spring glory.

Martin's Maps

A guide to the use of map and compass. Use your new-found skills on a walk around the area in the afternoon.

Meet 10am. Lower Higham Visitor Centre, Higham Lane, Hyde. 5½ hours.

Picnic in the Park

Bring a picnic and join the friends of Mossley Park. **11am - 3pm. Mossley Park, Old Brow, Mossley.**

Scavenger Hunt

Using a check list, walk around the park and find an assortment of items to help you make a picture frame or a scavenger stick. Suitable for children aged six and over.

Noon - 2pm. Lyme field Visitor Centre, Broadbottom.

5 May

Bank Holiday Family Day

Enjoy a fun-packed family day with activities and characters to meet. View our exhibitions and browse and buy from the handmade market. **11am - 3pm. Portland Basin Museum, Ashton.**

6 May

Sunset on Ridge Hill

See the setting sun on this gently-paced 2.5-mile walk. **Meet 7.30pm. Staley Way car park, Huddersfield Road, Stalybridge. 2 hours**

11 May

Access the Moors

A very strenuous 10-mile walk across open moorland to Alphin Pike. **Meet 10am. Castle Clough car park, Buckton Vale Road, Carrbrook. 6½ hours.**



13 May

Millbrook Heritage Trail

Explore the history of the growth of Millbrook and the decline of the cotton industry on a two-mile walk with Paul Nethercott.

Meet 7pm. Oakgates car park, Hartley Street, off Huddersfield Road, Millbrook. 2½ hours.

14 May

Tameside History Club, Family History Workshop

Getting started with your family tree? Call 0161 342 4242 to book a free place on our workshop which will provide a basic introduction to resources and techniques.

2pm. Tameside Local Studies and Archives Centre, Cotton Street, Ashton.

17 May

Introduction to Watercolours Study Day

This simple introduction will help you build up skills and confidence in handling watercolours. All materials included. £25 (£20 concessions). Book a place on 0161 343 2878.

10am - 3pm at Portland Basin Museum, Ashton.

17/18 May

Dry Stone Walling

A practical course on this traditional craft with the Lancashire Dry Stone Walling Association. £65. Booking essential on 0161 330 9613.

9am - 4.30pm at Hartshead Pike.

20 May

Flora Walk

Spend a relaxing evening with the Bamforth Brothers in close study of the local flora.

Meet 7.30pm at bottom of Cemetery Road, Denton. 2 hours.

24 May

Tameside's Brass Heritage Concert

A unique event combining the greatest brass band music of all time accompanied by a screening of the Tameside Now and Then film. All tickets £5 0161 342 4144.

Festival Theatre, Corporation Street, Hyde. 7.30pm.

27 May

Flora Walk

Spend a relaxing evening with the Bamforth Brothers in close study of the local flora.

Meet 7.30pm at Lyme field Visitor Centre, Broadbottom. 2 hours.

28 May

Nature Counts

The Greater Manchester Records Centre is encouraging people to get involved with recording wildlife. Join a family walk and see what you can spot, from butterflies and birds to wild flowers and trees. **Meet 1pm at the Silver Springs entrance off the A670 Mossley Road - Mellor Road, Ashton. 2 hours.**

30 May

The Little Mermaid

Ballet Theatre UK's acclaimed production. Tickets £16 and £12. 0161 342 4144. **Festival Theatre, Corporation Street, Hyde. 7.30pm.**



Check out details of all events at tameside.gov.uk/events

University Courses

at Ashton Sixth Form College



- Foundation Year Health Studies*
- Foundation Degree in Education*
- Foundation Degree in Early Childhood Studies*
- Foundation Degree in Public Services*
- BA (Hons) in Education*
- BA (Hons) in Early Childhood Studies*
- Teacher Training: Certificate in Education (PCET) or PGCE (PCET)**
- HND in Creative Media Production

*Validated by Staffordshire University
**Subject to university validation



NEW FOR 2014:
Access to Higher Education: Biological Sciences or English

APPLY NOW FOR COURSES STARTING SEPTEMBER 2014

Come to our Information & Enrolment Evening
Tuesday 22nd April 2014
5.00pm - 7.00pm

Adult Education

at Ashton Sixth Form College

English, Maths and Science

- Functional Maths
- Functional English
- English for Speakers of Other Languages (ESOL)
- GCSE Maths
- GCSE English
- GCSE Science

Please note that we are unable to enrol anyone onto a GCSE course until our Information & Enrolment Evening on Tuesday 24th June 2014, from 5.00pm - 7.00pm.

Vocational Courses

- Paediatric First Aid
- Setting up a Child Minding Business
- Playwork
- Children and Young People's Workforce
- Supporting Teaching and Learning in Schools
- Forest School Assistant
- Forest School Leader
- Business Administration
- Customer Service
- Employability Skills

For more information or to request an Adult Education or University Course Guide, please contact us on:

0161 666 8215 | adulted@asfc.ac.uk