



# THE TAMESIDE citizen

★ Proud #ProudTameside



## IN THIS ISSUE:



# NEWS IN BRIEF

## Giving young people a VOICE



**Young people will get involved in future plans and decisions for Tameside with a new youth council.**

Tameside Council is teaming up with Tameside College, Ashton 6th Form College, New Charter Housing and Active Tameside to develop a programme designed by young people for young people.

With the success of similar schemes such as the budget consultation workshops and the student ambassador scheme, the time is right to give Tameside's young people a real and powerful voice in how their borough is run.

Watch this space for more information on the Youth Council and how you can get involved.



## Letter to America

**Tameside Council has been asked to send a letter to America as part of an exhibition marking the 150th anniversary of the death of Abraham Lincoln.**

The president was assassinated five days after the end of the American Civil War on April 14, 1865. Ashton-under-Lyne was one of many communities to send condolences to the American government and the Lincoln family. 150 years later, the Abraham Lincoln Presidential Library and Museum in Springfield, Illinois sent a request for another letter explaining how Lincoln's legacy has affected Tameside.

The American Civil War had significant consequences for the people of Tameside, as the disruption of cotton exports from across the Atlantic led to 4 years of economic depression known as the "Lancashire Cotton Famine". Despite this, support for the Union and emancipation remained strong in the area.

CLlr Quinn said: *"I'm honoured that the people of Tameside have been invited to contribute to the commemoration of such a distinguished statesman. Abraham Lincoln is considered to be the greatest American president"*.

The original 1865 letter from Ashton Town Council, its modern counterpart and hundreds of similar documents from across the world can be found online at [www.citizenlincoln.org](http://www.citizenlincoln.org). The Local Studies and Archives Centre are also holding their own exhibition on Abraham Lincoln and the Lancashire Cotton Famine.

# Family Easter fun

**THERE should be lots of happy bunnies this Easter thanks to a packed programme of events and activities for children and families to enjoy.**

From egg hunts, crafts, dance and build-a-bike workshops to Go Wild events in our country parks, there's something to suit all ages and interests.

There will also be extra free holiday swimming activities for under-16s as well as a wide range of sport activities. For a full listing of what's on over the school Easter holidays see [www.tameside.gov.uk/easteractivities](http://www.tameside.gov.uk/easteractivities)

**Tameside Council is committed to providing lots of things for families to do**



# Welcome to the spring edition of the Tameside Citizen.

**OVER the last few years we have had to make some difficult decisions in the face of significant and disproportionate reductions in our funding from central government.**

Only one third of the money the Council spends on services comes from Council Tax paid by local people. The rest comes from the Government. Over the last 5 years the amount the Government provides has been halved in real terms. When the greater proportion of our funding is reduced by half, and we are required by law to set a balanced budget so we cannot spend more than we have, we are faced with a real challenge.

£104 million has been reduced from our spending since 2010. And another £38 million will be lost over the next two years.

As the Leader of the Council I will not shy away from the difficult choices. Similarly we won't walk away from the services that are important to local people.

With this in mind we have worked hard to absorb these cuts without reducing frontline services but we have now reached a point where this has become unsustainable.

At the meeting of Council on 24 February 2015 we made the tough decision to raise Council Tax bills by 1.9%. No one wants to increase bills, least of all me. However this small increase which averages just 37p per week per household will allow us to protect vital frontline services such as children's social care and street cleaning. Even after this increase Council Tax levels in Tameside remain low. In fact they are the 4th lowest in Greater Manchester.

The other option was to take the Government's freeze grant. However this was neither a sensible, nor a sustainable, choice for the long term. The freeze grant is a short term sticking plaster which generates less income and is for one

year only. This would require us to make further reductions in services and leave them increasingly vulnerable in future years.

The Council didn't take this decision lightly and without due consideration. This year we ran our largest ever budget consultation exercise with residents. We are the only Council in Greater Manchester to have spent so much time talking to our residents. When asked to balance the budget over 70% choose to increase Council Tax rather than see further cuts to vital services. The consultation also gave us a clear view of where local people want us to focus our service plans for the future. For example, over 70% of respondents supported the bin swap project which helps save tax-payers money and protect the environment for future generations.

Despite these challenges we remain a can do Council. At the end of last year, after listening to local people, I outlined 15 Council pledges for 2015. Throughout this issue details of those pledges can be found. Setting out how, despite significant cuts, the Council remains determined to improve Tameside.

Over the next year we will continue our engagement with local people. These conversations will help us work together to protect services and grow Tameside.

I hope you enjoy reading this edition of the Citizen.



**Cllr Kieran Quinn**  
Tameside Council Executive Leader

## What have you enjoyed in Tameside?

Post your favourite picture for our photo of the week feature via Instagram or Twitter. Use **#ProudTameside** or email **communications@tameside.gov.uk**

## Contents

- 04** Britain's Favourite Market
- 06** Budget
- 08** Your Vote Matters
- 09** Greening Tameside
- 10** Supporting Town Centres
- 12** Vision Tameside
- 14** Made in Tameside
- 15** Money Matters
- 16** Proud
- 18** Affordable Homes
- 19** Apprentices
- 20** Armed Forces Day
- 21** Tameside Jobs Pledge
- 22** What's On

Follow us on  
 Instagram  
Tameside\_Council

Portland Basin Museum,  
Ashton-under-Lyne





# Ashton Market has been voted **Britain's Favourite Market** for the second year running

MORE than 100,000 public votes were cast in the ballot run by the National Association of British Market Authorities (NABMA). The market has also won 'Britain's Greenest Market' and 'Market Team of the Year' accolades. To find out more visit [tameside.gov.uk/ashton/market](http://tameside.gov.uk/ashton/market) or follow us on Twitter at [@TamesideMarkets](https://twitter.com/TamesideMarkets)

## What do the traders say?



*"We're in a beautiful building, the stalls are attractively set out and the atmosphere is friendly. Customers get a personal service – if you can't find what you want the traders will always help you."*

**Linda Warden**, Linda's Cosmetics

*"Ashton Market Hall is a great building and is open six days a week. There is a wide variety of goods on sale, you can almost always find what you're looking for."*

**Mike Carpenter**  
Aromik Candles, Incense  
and Oils





*“Ashton Market Hall is updated and modern, has a variety of stalls and has good traders. It is also managed well.”*

**Jimmy Joshi**  
Hari Market News



**Don't forget**

Our other great town centre seasonal and themed markets - Hyde, Stalybridge and Droylsden Easter market plus lots more.

## What do the shoppers say?

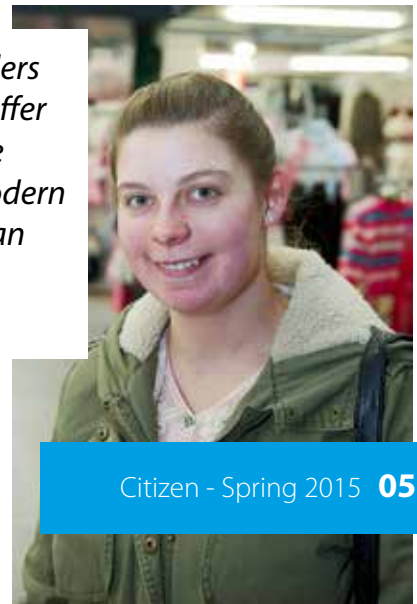


*“I have been coming to Ashton Market all my life – I used to come as a little girl with my mum and grandparents. It has everything you could need from cards, kitchen things to fancy dress. I also enjoy all the events like the Christmas Market and the monthly farmers’ market.”*

**Clare Morby**

*“I like supporting local traders and they are friendly and offer good customer service. The building feels fresh and modern and if I need something I can always find it here.”*

**Gemma Scott**



*“Local traders are friendly and offer good customer service.”*

# Budget consultation

*Thanks for taking part!*

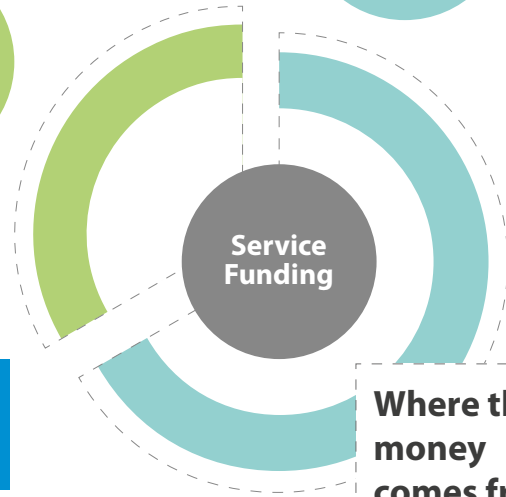
**TAMESIDE Council and residents came together to meet the challenge of setting a balanced budget for 2015/16 and 2016/17.**

Funding cuts from government mean the Council needs to make £38million of savings from service budgets over the next 2-years.

We asked for your views on how we set a balanced budget for next year. You rose to the challenge and the response has been incredible.

Two Thirds from Government

One Third from Council Tax



Where the money comes from

## Headline results



Over 80% support releasing more land for business and homes



Nearly 3,000 contacts

Over 70% of respondents supported a Council Tax rise. The Council has agreed a 1.9% increase which equates to 37p per week on average.

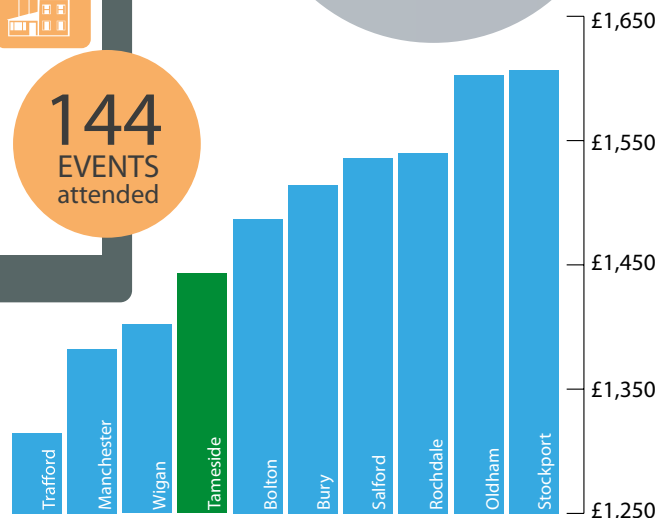
Over 70% Support for bin swap roll out

Over 1,000 completed simulator responses

144 EVENTS attended

@tmbc\_waste

Tameside Council Tax is still among the **lowest in Greater Manchester.**



(Band D) 2015/16

# Budget 2015/16

It costs **£1.1 million** every day to provide these services.



For more information see the Council meeting papers on our website [www.tameside.gov.uk/fullcouncil/24feb15/agenda](http://www.tameside.gov.uk/fullcouncil/24feb15/agenda)

# YOUR VOTE MATTERS

## MAKE SURE YOU'RE REGISTERED TO VOTE



With only two months to go until the General Election and local elections on 7 May, Tameside residents are being urged to make sure they are registered to vote. There are two key dates residents should be aware of:

- ✓ To vote in the next elections you **must** be registered by **20 April 2015**.
- ✓ To receive a postal vote, you **must** apply for one by **5pm on 21 April 2015**.

### Check you are registered to vote

In January, the Council wrote to all households in the borough concerning electoral registration. Residents are urged to check that this information is correct and check that they are registered to vote. If you are unsure if you are registered to vote, please check with the Elections Office on **0161 342 3036** or email [elections@tameside.gov.uk](mailto:elections@tameside.gov.uk).

### What if I need to register?

- ✓ It's a very simple process and only takes 5 minutes. Visit [www.gov.uk/register-to-vote](http://www.gov.uk/register-to-vote)
- ✓ Fill in your name, address, date of birth and other details.
- ✓ You'll also need your national insurance number, which can be found on your national insurance card, on official paperwork such as payslips and letters about benefits or Tax Credits.
- ✓ Look out for a confirmation to say you've been successful.

If you need to register, get in touch by **20 April 2015** to be eligible to vote in this election.

*Don't miss out!*

## Anyone can have a postal vote

Anyone who is registered to vote can apply for a postal vote. To apply for a postal vote, you can either:

- ✓ Contact our customer services team on **0161 342 3036** and ask for a postal vote application form to be sent out to your home address
- Or
- ✓ Visit our website: [www.tameside.gov.uk/voting/postal](http://www.tameside.gov.uk/voting/postal) and complete the "Vote by Post Application Form".

### Important points to remember about voting by post:

- ✓ Once you have been issued a postal vote you can't vote at a polling station
- ✓ You can drop your postal vote off at a polling station as long as the polling station is in the same constituency.



# Greening Tameside

**THE Bin Swap scheme is saving money and helping us to deliver our commitment to make Tameside a Greener Place.**

The swap which has been rolled out in Mossley, Stalybridge North and South, Hyde Newton and Ashton Waterloo is diverting up to 26 tonnes of rubbish from landfill daily, reducing the amount of public money spent on costly landfill charges.

**A big thank you to the 25,000 households who are making the Bin Swap work in Tameside.**

Residents receive letters when their area is to join the scheme. Look out for your letter as we expand the scheme across the Borough.

Bin swap involves swapping what goes in the green and black bins, so landfill waste goes in the green bin while glass, cans and plastic bottles go in the larger black bin, which has more capacity for recycling.

Rolling out Bin Swap will mean we will have to spend £3 million less per year on sending waste to landfill.

**1/4 of households have successfully done the swap**



**WE EMPTY 12 MILLION BINS**



**FROM 94,000 HOUSEHOLDS ANNUALLY**



**AND REMOVE 85,000 TONNES OF WASTE**



As we roll out Bin Swap we are also rolling out, cleaner, greener, more efficient LED street lighting.

**We will save £400,000 per year and will provide Neighbourhoods with brighter, more reliable lighting.**



*"I think the TLC Card is a very good idea. It will bring people into Stalybridge to see what the town has to offer."*

**Michelle Manson,**  
Fairy Sparkle Cleaning,  
Melbourne Street,  
Stalybridge



Big Tidy Up



# Supporting BIG Town Centre Tidy Up

**TAMESIDE Council is investing £1 million to spruce up our town centres.**

Over the next 6 months teams will visit each of our town centres to carry out improvement works. Painting, repairing and replacing street furniture such as benches, bins and bollards. Cutting back, re-planting and smartening up green spaces. Removing old out of date signage, and refreshing street and pavement markings. Repairing loose paving stones and giving walkways a deep clean. The Big Tidy Up is not only good for shopkeepers and their customers, it also helps to support local small businesses. Look out for the Big Tidy Up team who will be coming to your town soon.



#ProudTameside



Work to support the Big Tidy Up will, wherever possible go to local businesses.

## Get your card

*Giving shoppers and local shops a helping hand*

**ALMOST 1,000 people have signed up for a Tameside Loyalty (TLC) card, eager to take advantage of the special deals and discounts being offered by more than 175 businesses across the borough.**

TLC launched at the end of last year and the aim of the scheme is to get more people shopping in our town centres, keeping them vibrant and busy. In short, it offers a helping hand to residents and retailers alike. Getting involved couldn't be easier.

Just visit [www.tamesideloyaltycard.co.uk](http://www.tamesideloyaltycard.co.uk) and sign up as a business or a shopper. If you're a resident you'll get a membership card to use at participating outlets. If you're a retailer, you'll receive a window sticker and a listing on the website.



# Town Centres

## CHEAPER arking

**TAMESIDE** has the cheapest Council run parking in Greater Manchester, attracting more shoppers and keeping the town centres busy.

For more information on car parks and zones see [www.tameside.gov.uk/carparks](http://www.tameside.gov.uk/carparks)



Parking in Council owned car parks in the Borough will not cost you any more than £2 all day or £1 for up to 3 hours.

*"Cheaper parking has made a huge difference – you can park for three hours for just £1 which has really helped bring shoppers in."*

**Tim Brierley**  
**A & Y Brierley Footwear**  
**Market Hall, Ashton-under-Lyne**





# VISION TAMESIDE

**TRANSFORMING lives – that’s the aim of Vision Tameside’s ambitious project bringing new jobs, economic prosperity and better skills to the borough.**

**Come and view our exciting plans for the borough at one of the following roadshows.**

**You’ll have the opportunity to speak to representatives from both the Council and Tameside College.**

#### **Ashton-under-Lyne**

Wednesday 18 March 2015 at 6.30pm  
Ashton 6th Form College, Darnton Road,  
Ashton-under-Lyne, OL6 9RL

#### **Denton**

Thursday 19 March 2015 at 6.30pm  
St George’s Community Centre, Windmill Lane,  
Denton, M34 2JE

#### **Hyde & Longendale**

Monday 23 March 2015 at 6.30pm  
Hattersley Hub, Ashworth Lane,  
Hattersley, SK14 3AU

#### **Dukinfield**

Tuesday 24 March 2015 at 6.30pm  
St John’s Community Hall, Vicarage Drive,  
Dukinfield, SK16 5HZ

#### **Stalybridge & Mossley**

Wednesday 25 March 2015 at 6.30pm  
Stalybridge Civic Hall, Trinity Street,  
Stalybridge, SK15 2BN

#### **Droylsden & Audenshaw**

Thursday 26 March 2015 at 6.30pm  
Droylsden Academy, Manor Road,  
Droylsden, M43 6QD

## Vision Tameside is about:

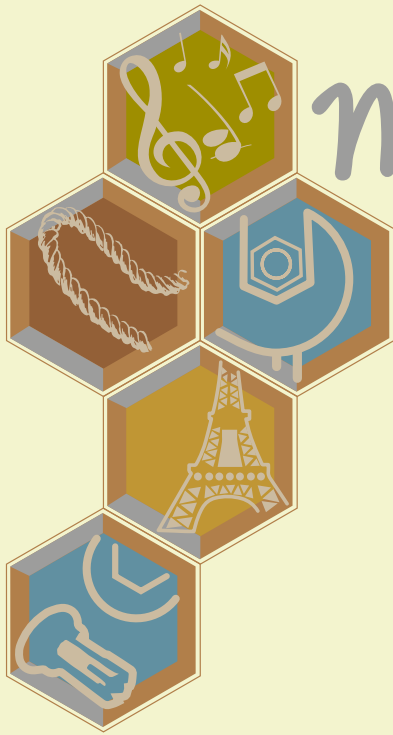
- Investing in the future of the borough’s young people. New state-of-the-art college facilities will ensure our young people have the best facilities and opportunities on their doorstep.
- Bringing together public sector services into one central point, making it easier for residents to access services.
- Reducing the council’s running costs with a smaller, more efficient building and enabling land to be released for the college, retail and other public services.
- Providing a huge boost to the Tameside economy through the creation of jobs.
- Investing in our other town centres and securing the future of all our prestigious buildings.
- Enhancing the shopping and visitor experience through the redevelopment of the market ground in Ashton.
- Improving transport links across the Borough with a new transport interchange.



Phase

2

>> A view of what the new college and public sector hub could look like.



# Made in TAMESIDE



Tameside is Proud of its reputation for being a place which makes things. Below are just a few of the things which have been 'Made in Tameside'.



## Proud

**PG Tips** were Made in Tameside. Brooke Bond tea founder Arthur Brooke opened his first shop in Ashton in 1869.

**Ropes** used by Sir Edmund Hillary to conquer Everest were Made in Tameside by Kenyon's ropes in 1953.

**Margarine** was Made in Tameside. Its manufacture began in an old hat factory in Hyde 1880.

**Bomb doors** for the Lancaster bomber were Made in Tameside at Rycroft Electric.

**Rivets** used in the construction of the Eiffel Tower in Paris were Made in Tameside at Lee's Ironworks, Park Bridge.

**Terry towel** (the first machine woven towel) was made in Tameside by W.H. Christy & Sons in 1851 and was a favourite of Queen Victoria.

**Nixon's Leather** reputedly supplied the leather which Swiss watch firm Omega used as watch straps for Apollo XI astronauts trip to the moon.

## Fair and safe credit

Tameside Council is committed to ensuring local people have access to fair and safe credit.

My Home Finance (see below) provides a more affordable alternative to pay-day lenders on the high-street, and a much safer option than door-step loan sharks. My Home Finance is one part of a package of support that is available for people who are experiencing financial difficulties or money worries. These services help people plan for the future so they can achieve a greater level of financial confidence and independence.



**My Home**  
Finance  
*There for you, fair for you*



A **£300**  
loan from us  
could save  
you as much  
as **£160**  
compared to a  
doorstep loan



Loan examples	Total amount of credit	Duration of agreement	APR	Annual interest rate	Interest payable	Admin fee	Weekly payment	Total amount payable
My Home Finance	£300	52 weeks	69.5% APR Representative	22.89% fixed	£68.68	£15.00*	£7.09	£383.68
Doorstep loan	£300	52 weeks	272.2% APR	82.00% fixed	£246.00		£10.50	£546.00

\*Administration fee is 5% of the amount borrowed to be paid up front.



[twitter.com/MyHomeFinance](https://twitter.com/MyHomeFinance)



My Home Finance

Call us on 01905 25805

[www.myhomefinance.org.uk](http://www.myhomefinance.org.uk)

Terms and conditions apply. Finance subject to status, aged 18s and over. Comparison figures correct as at November 1st 2014. Finance provided by My Home Finance Limited, 25 Procter Street, London WC1V 6NY. My Home Finance is a not for profit social enterprise. Company registration number is 7236812.

**Cashbox Credit Union**

[www.cashbox.org.uk](http://www.cashbox.org.uk)

0161 342 3266

**Tameside Citizens Advice Bureau**

[www.tamesidecab.org.uk](http://www.tamesidecab.org.uk)

03448 472638

**Money Information Network Tameside**

[www.mintameside.org.uk](http://www.mintameside.org.uk)

**Welfare Rights Debt Advice Service**

[www.tameside.gov.uk/welfarerights](http://www.tameside.gov.uk/welfarerights)

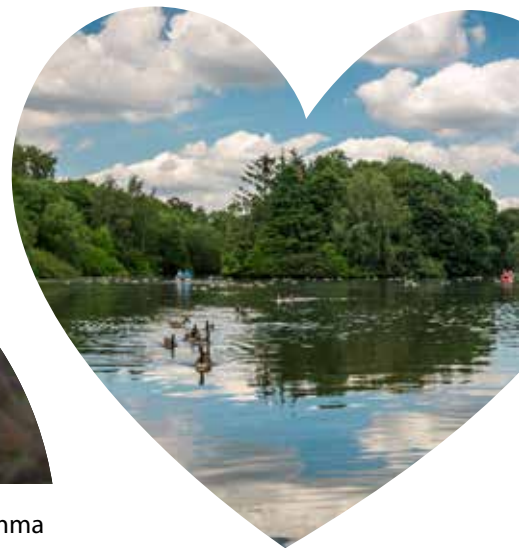
# Tameside is bursting with pride

HERE are just a few of the things  
which make us proud of Tameside.

Get in touch and tell us your own:  
[communications@tameside.gov.uk](mailto:communications@tameside.gov.uk)  
#ProudTameside

## Proud of Tameside People

LS LOWRY and Harry Rutherford depicted mid-20th century northern life through their paintings. Lowry, who lived in Mottram for many years, is famous for his matchstick figures. Rutherford is best known for his Hyde scenes and especially "Northern Saturday".



THE determined Denton resident Emma Timmis ran 94 marathons in 89 days to raise money for local and international charities. The Council has teamed up with her to raise even more money.







## Proud of Tameside *Services* ★

AWARD winning Portland Basin and Central Art Gallery.



## Proud of Tameside *Heroes* ★

TAMESIDE has eight Victoria Cross recipients

John Buckley: 1813 - 1876

William Thomas Forshaw: 1890 - 1943

Albert Hill: 1895 - 1971

James Kirk: 1897 - 1918

Andrew Moynihan: 1831 - 1867

Arthur Herbert Procter: 1890 - 1973

Harry Norton Schofield: 1865 - 1931

Ernest Sykes: 1885 - 1949

IN November last year Tameside Council's Operations & Greenspace Team won the iNetwork award for 'Effective Service Redesign and Reform'. In partnership with the Probation Service Community Payback Team, and the Council's Youth Offending and Routes to Work (Learning Disability) teams, 20,000 hours of positive engagement with individuals who often struggle to adjust to the demands of being in a work environment has been provided.



## Proud of Tameside *Places* ★

AWARD winning Stamford Park remains a favourite attraction with families from across Tameside and beyond.



Jimmy Armfield

Simone Perotta

Sir Geoff Hurst

LEE Jones, Tameside College student is one of countless Tameside people who give up their time to help others

The 19 year old from Denton has been getting involved in all sorts of events and fundraising activities while simultaneously gaining valuable experience for his own future.

TAMESIDE can boast three World Cup winning footballers; Denton's Sir Geoff Hurst (England 1966), Denton's Jimmy Armfield (England 1966) and Ashton's Simone Perotta (Italy 2006).

# Solid foundation for housing build bonanza



**TAMESIDE, like all parts of the country, desperately needs new homes and it needs them now. With a fast growing population demand for houses is increasing all the time. In Tameside we estimate we'll need at least 300 new homes every year to keep pace with demand.**

Tameside Council has responded and teamed up with New Charter Homes to develop several sites across the borough. These will provide affordable homes while at the same time creating jobs and apprenticeships and generating funds for the local authority to use to spend on essential services. One plot, the former Hawthorn School site off Corporation Road, Audenshaw, was sold to New Charter

for £1 million. Other pieces of land have been transferred on an equity share basis. This means that although they were handed over for free in the first instance, whenever a property is sold the council recoups the value of that plot. In the meantime, Tameside receives Council Tax and New Homes Bonus – a grant the Government pays to authorities to encourage them to increase housing.

The Council will continue to identify plots of land that can be used to develop affordable homes. Homes that will be reserved for Tameside residents. It's the right thing to do and it's reassuring to know you agree with us. Over 80% of people who responded to the budget consultation agreed that we need to release more land for homes and business.



**Underway:** Building on the former Hawthorn School site.

## Supporting older people to be safe and independent



**casserole**

**TAMESIDE Council is committed to supporting older people to live independently and feel safe in their home.**

Casserole Club sees people share extra portions of home-cooked food with others in their area who might not always be able to cook for themselves. Like a local, community-led takeaway, members serve up meals to their neighbours, getting more people cooking fresh food while strengthening local neighbourhood relationships with every bite. Casserole is supported by a website that allows you to sign up as a person who likes to cook and is happy to make an extra plate of home

cooked food (Cooks) and to search for neighbours who could really benefit from a home cooked hot meal (Diners). To find out more about Casserole Club visit [www.casseroleclub.com](http://www.casseroleclub.com) or if you're not online ring 0161 339 2345.

The Grafton Centre in Hyde provides a range of services for people aged 55 and over. The centre is becoming a Development Trust so it will be run by local people and its members. One of the recent developments is the creation of a new volunteer catering team. Members have come together as a team to continue to provide a hot meal and bistro function for the Grafton members. The centre also works closely

with Tameside College of Technology Catering students, who provide a fine dining experience for members each Friday. If you are interested in coming along to the centre for lunch, to participate in the wide range of activities, or if you want to volunteer to help or join the board, please ring 0161 368 4110.



# Apprentices... you're hired!



**TAMESIDE Council has committed to working with small businesses which want to give young people a helping hand by providing grants to take on apprentices and buy tools or equipment.**

Apprenticeships, which can take between one and four years to complete, combine practical training in a job with study and as a successful apprentice, the opportunity to work alongside experienced staff, gain job-specific skills, earn a wage and get holiday pay as well as study towards a related qualification.

An apprenticeship has an equivalent education level and can be:

**Intermediate** - equivalent to 5 GCSE passes

**Advanced** - equivalent to 2 A level passes

**Higher** - can lead to NVQ Level 4 and above, or a foundation degree

You can apply for an apprenticeship while you're still at school. To start one, you'll need to be: 16 or over; living in England and not in full-time education.

Choosing an apprenticeship as a route into employment is increasingly popular. Apprenticeships provided a structured and tailored programme of on the job learning that is designed with the help of employers in the relevant industries. Apprentices earn while they learn and the experience and skills gained through working alongside experienced staff are sought after by employers, giving them an advantage when looking for work at the end of the apprenticeship. As well as working in a company gaining job-specific skills apprenticeships also go to college to work towards nationally recognised qualifications.

Apprenticeships can be demanding but they are very rewarding as they give people the chance to earn a steady wage while learning new skills that employers want, giving them career choices and future opportunities.

To find out more about apprenticeships go to [www.gov.uk/further-education-skills/apprenticeships](http://www.gov.uk/further-education-skills/apprenticeships)



Two young people from Tameside who found apprenticeships a helpful aid to full time employment are Nathan Burke and Tom Arrundale. Nathan as a mechanic, Tom as a builder's merchants.



# Support for our heroes



COUNCILLOR Kieran Quinn, the Chair of the Greater Manchester Pension Fund (insert) is proposing to name the new Droylsden Pension Fund Headquarters 'Guardsman Tony Downes House' to reflect the heroic sacrifice made by local Droylsden lad Tony Downes. Cllr Quinn said by 'honouring one of our Armed Forces Heroes we honour them all.'

Local Droylsden lad Guardsman Tony Downes (pictured) from the 1st Battalion Grenadier Guards, was killed on Saturday 9 June 2007 in Afghanistan, when his vehicle was hit by an explosion when on a patrol with the Afghan National Army, taking part in an operation to help widen and deepen irrigation ditches for locals in the area. He was held in the highest regard by all who met him and gave his life in selfless service to his country.



## Tameside Council veteran pledge

Tameside Council has pledged to provide all ex forces employees six months work, skills training and transition support. Existing support includes concessionary leisure passes, and increased priority for social housing. To find out about how to get support visit the Council's website at [www.tameside.gov.uk/armedforcescovenant](http://www.tameside.gov.uk/armedforcescovenant)

- Education which meets the needs of forces families.
- Survey of attitudes on what affects lives of forces families.
- Help for service leavers and families to find employment.
- Discounts in shops and restaurants.
- Participation of cadet forces in borough events.
- Encourage membership of cadet forces.
- Extra support for reservists.
- Easier access to counselling and social care.
- More publicity about available benefits.

# Armed Forces Day

'Honouring Britain's Armed Forces, Past, Present and Future'

**Saturday 27th June 2015**

1 - 4pm Victoria Park, Denton



**FREE EVENT**

Everyone welcome, lots of children's activities and fabulous entertainment, throughout the afternoon.

For further information visit  
[www.tameside.gov.uk/armedforcesday](http://www.tameside.gov.uk/armedforcesday)  
or Cultural Services on **0161 342 4144**  
**@tmbc\_culture**

# Tameside Jobs Pledge

**MADE  
IN TAMESIDE**

**EMPLOYMENT and skills are the underpinning elements of success to any economically prosperous place. We recognise that here in Tameside. New grant schemes have been set up to ensure we are supporting local people - the businesses and skills of people 'Made in Tameside', so that they remain and continue to invest in Tameside.**

Tameside businesses will be asked to sign up the 'Tameside Jobs Pledge'. If businesses can demonstrate that they meet at least three of the 11 criteria, including employment support to local people, they will be eligible to access a business enterprise grant of up to £1,500 plus other support benefits such as a network of recruitment support,

enhanced local reputation and profile, improving workforce skills, access to invitation only events with local contractors, and an annual dinner with The Leader and Chief Executive of the Council.

We recognise that Tameside has a vitally important trade skills base and to further support our Made in Tameside commitment, a specific trade grant scheme is also being launched, with grants of up to £1,000 which are aimed at trade businesses either taking on an apprentice, or a young person starting their own trade business in Tameside.

More information will be made available on how to sign up / register your interest on [www.tameside.gov.uk](http://www.tameside.gov.uk) and Live Work Invest website [www.liveworkinvest.com](http://www.liveworkinvest.com).

TAMESIDE CENTRE FOR ENTERPRISE



# What's on in Tameside

18 March

## Tameside History Club

Bring along any mementos of the borough's agricultural and market gardening history. Fiona Dunk from the Kindling Trust's Forgotten Fields project will be sharing a short film and the research gathered so far. **2pm, Tameside Local Studies and Archives Centre, Ashton.**

22 March

## Etherow Classic

A 10-mile walk to Compstall and back. Enjoy hills, woods, rivers, lows and beautiful views. **Meet 10am, Lyme field, off Lower Market Street, Broadbottom, SK14 6AG.**

29 March

## Crossing the Boundary

An eight-mile route following part of the Leesfield parish boundary. **Meet 10am, Mossley Market Ground, 5½ hours.**

5 April

## Easter Egg Hunt

Competitions for best Easter bonnet and best-dressed egg. **1 - 3pm, Lower Higham Visitor Centre, Hyde, SK14 5LR.**

6 April

## Easter Monday Fun Day

A fun-packed family day. **11am - 3pm, Portland Basin Museum, Ashton, OL7 0QA.**

7 April

## Jolly Holidays

Also on 9 April, 14 April, 26 May, 28 May, 2 June and 4 June. Artist-led craft activities for all ages. 50p per child. **11am - 3pm, Portland Basin Museum, Ashton, OL7 0QA.**

8 April

## Meet Tommy Atkins

Also on 15 April, 27 May and 3 June. Find out how the average British soldier lived in the trenches during the First World War. **11am - 3pm, Museum of the Manchester Regiment, Ashton Town Hall.**

9 April

## Go Wild

Den-building, pond-dipping and a mini-beast safari. **1 - 3pm, car park at bottom of Meadow Lane, Haughton Green, M34 7QA.**

11 April

## Elves and the Shoemaker

Stuff and Nonsense Theatre Company's production for children aged two and over. **2pm and 4.30pm, Festival Theatre, Hyde, SK14 1AB. Tickets £6.25 - 0843 208 0500 www.quaytickets.com**

## Taming the Peak

Take the train from Guide Bridge to Marple and return along the Peak Forest Canal and the River Tame. 9 miles. **10am, Guide Bridge Station, Audenshaw, M34 5HF. 5 hours.**

16 April

## Big Goldilocks and the Three Bears Plus...

Booster Cushion theatre are back with a 6ft book, a 6ft Goldilocks and lots of audience participation. Suitable for children aged four and over. **2pm, Tameside Central Library, Ashton. This event is free but places are limited. 0161 342 2029.**

## Go Wild

Den-building, pond-dipping and a mini-beast safari. **1pm, Park Bridge Heritage Centre, Park Bridge, Ashton.**

19 April

## Family Safari

Explore ponds, meadows and woodlands on a short wildlife walk. Don't forget your picnic. **Meet 11am, Oakgates car park, Hartley Street, Stalybridge, SK15 3EP.**

22 April

## Tameside History Club

The Girls Who Walked Away - Fairfield Girls and the female struggle for equality. An illustrated talk by Anne McGarry about her recently published book. **Tameside Local Studies and Archives Centre, Ashton.**

26 April

## Chadkirk Chapel Ramble

A 10-mile walk over Werneth Low to Chadkirk Chapel and back via Etherow Country Park. **10am, Lower Higham Visitor Centre, Hyde, SK14 5LR.**

## Tulip Sunday

Face painting, craft workshops, climbing wall, music, sports activities, stalls and street theatre. **Noon - 4pm, Stamford Park.**

30 April

## Launch of Generation Air

A new family friendly exhibition. **4 - 5.30pm, Central Art Gallery, Ashton.**

3 May

## Kids in the Environment

Also 7 June. Aged seven to 12 and enjoy fun, forest activities, KITE is for you. **10am - noon, Park Bridge Heritage Centre.**

## Martin's Maps

Learn how to use a map and compass. Use your new skills on a walk in the afternoon. **10am, Lower Higham Visitor Centre, Hyde.**

4 May

## Bank Holiday Special

Free craft activity. **11am - 3pm, Portland Basin Museum, Ashton.**

5 May

## Roaches Trail

A two-mile walk with Paul Nethercott. **Meet 7.30pm in the lay by opposite Royal George Hotel, Greenfield, OL3 7HX.**

10 May

## As the Crow Flies

10 miles of moorland, river valleys, towpaths and tracks. **10am, Oakgates car park, Hartley Street, Stalybridge, SK15 3EP.**

14 May

## Sunset on Ridge Hill

See the setting sun on this 2½-mile walk. **7.30pm, Staley Way car park, Stalybridge, SK15 2QA.**

16/17 May

## Dry Stone Walling

A practical course with the Cheshire Dry Stone Walling Association. **£85. Booking Essential on 07415 107120 or e-mail dswcheshire91@btinternet.com Werneth Low Country Park, Hyde.**

17 May

## Hike to Lad's Leap

11-mile ramble to Tintwistle Knarr and Lad's Leap returning along the Longdendale Trail. **10am, car park opposite St Mary's Church, Hollingworth, SK14 8NE.**

19 May

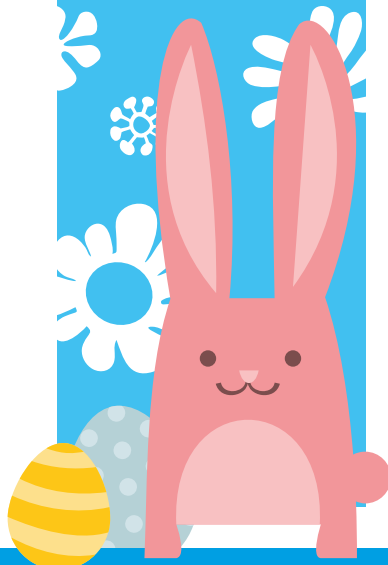
## Flora Walk

An evening with the Bamforth Brothers in close study of the local flora. **7.30pm, bottom of Cemetery Road, Denton, M34 6ER.**

20 May

## Lowry Walk

A walk around Portland Basin looking at its natural and historic aspects. **7.30pm, Portland Basin car park, Ashton, OL7 0QA.**



20 May

#### Tameside History Club

Tameside Reporter photographer Ray Liddy shows images of Belle Vue. **2pm, Tameside Local Studies and Archives Centre, Ashton.**

22 May

#### Opera Appetizer - Young Opera Venture

Six young singers and a pianist present highlights from favourite operas. **7.30pm, Festival Theatre, Hyde, SK14 1AB. Tickets from £13.25 on 0843 208 0500 or visit [www.quaytickets.com](http://www.quaytickets.com)**

23 May

#### Aladdin

Ballet Theatre UK's dazzling retelling of this popular tale. **7.30pm, Festival Theatre, Hyde, SK14 1AB. Tickets from £13.25 on 0843 208 0500 or visit [www.quaytickets.com](http://www.quaytickets.com)**

24 May

#### Copperas Field Family Day

Music, tombola, face-painting and much more. Call 0161 342 2270 for more details. **2 - 5pm, Copperas Lane, Droylsden, M43 6AX.**

25 May

#### Bank Holiday Special

Join us for a free craft activity, **11am - 3pm, Portland Basin Museum, Ashton.**

26 May

#### Go Wild Outdoors

Pond-dipping, bug-hunting, build a woodland shelter and a nature scavenger hunt. **1 - 3pm, car park bottom of Meadow Lane, Haughton Green, M34 7QA.**

#### Flora Walk

An evening with the Bamforth Brothers in close study of the local flora. **7.30pm, Lyme field Broad Mills, Broadbottom, SK14 6AG.**

28 May

#### Nature Counts

Join a family walk and see what you can spot, from butterflies and birds to wild flowers and trees. **1pm, Park Bridge Heritage Centre.**

29 May

#### Whit Friday Band Contests

Various venues across Tameside. **For details visit [www.tameside.gov.uk/events](http://www.tameside.gov.uk/events)**

30/31 May

#### Dry Stone Walling

A practical course with the Lancashire Dry Stone Walling Association. **£75. Booking essential on 0161 343 2878. 9am - 4.30pm, Hartsthead Pike.**

31 May

#### Discover Hyde Park

Explore Hyde Park on a short walk, then enjoy a family treasure hunt. **1pm, Bayley Hall, Hyde Park.**

2 June

#### Lower Brushes Trail

Two-mile walk around Lower Brushes with Paul Nethercott. **7.30pm, Oakgates car park, Hartley Street, Stalybridge, SK15 3EP.**

3 June

#### Nature Counts

Join a family walk and see what you can spot. **1pm, Gower Hey Wood entrance, Osborne Road, Hyde, SK14 5PY.**

4 June

#### Go Wild

Family nature scavenger trail, wild art and a bug hunt. **1 - 3pm, Sunny Bank Vale off Greenside Lane, Droylsden, M43 7RA.**

7 June

#### Lowes and Lakes

A moderate 12-mile ramble by ancient burial grounds and Roman Lakes. **9.30am, Lyme field Broad Mills, Broadbottom, SK14 6AG.**

9 June

#### Flora Walk

An evening with the Bamforth Brothers in close study of the local flora. **7.30pm, Castle Clough car park, Stalybridge, SK15 3PJ.**

14 June

#### Wire, Linoleum and Wallpaper

A four-mile stroll with Brian Taylor in the woodlands around Denton, looking at wildlife and an industrial past. **1pm, bottom of Cemetery Road, Denton.**

16 June

#### Flora Walk

An evening with the Bamforth Brothers in close study of the local flora. **7.30pm, Lower Higham Visitor Centre, Hyde.**

17 June

#### Tameside History Club

A walk around Hyde looking at its history. Book on 0161 342 4242. **2pm, Hyde Town Hall, Corporation Street entrance.**

21 June

#### Heritage Transport

More than 70 vintage and classic cars and bikes in a historic setting. **11am - 4pm, Park Bridge Heritage Centre.**

#### Summer Solstice

Make the most of the longest day on a four-mile stroll to Hartshead Pike. **7pm, Park Bridge Heritage Centre.**

23 June

#### Flora Walk

An evening with the Bamforth Brothers in close study of the local flora. **7.30pm, car park at the bottom of Meadow Lane, Haughton Green, Denton, M34 7QA.**

27 June

#### Armed Forces Day

Honouring UK Armed Forces, past, present and future. Activities and entertainment throughout the afternoon. **1 - 4pm, Victoria Park, Denton, M34 2AA.**

28 June

#### Town and Country

10-mile ramble on the moors above Stalybridge with Paul Nethercott. **10am, Park Street entrance to Cheetham's Park, Stalybridge, SK15 2JR.**

30 June

#### Flora Walk

An evening with the Bamforth Brothers in close study of the local flora. **7.30pm, the canal swing bridge, Copperas Lane, Droylsden, M43 6AX.**

# University Courses

At Ashton Sixth Form College



- Access to Higher Education Diploma (Biological Sciences or English)
- Foundation Year Health Studies
- Foundation Degree in Education
- Foundation Degree in Early Childhood Studies
- BA (Hons) in Education
- BA (Hons) in Early Childhood Studies
- PGCE (Post-Compulsory Education and Training)
- Certificate in Education (Post-Compulsory Education and Training)
- HND Media Production
- Foundation Year Art and Design

**University Course Information Evening**  
**Tuesday 24th March | 6pm - 7.30pm**

# Adult Education

At Ashton Sixth Form College



- Functional Maths
- Functional English
- GCSE Maths
- GCSE English
- GCSE Science
- Setting up a Child Minding Business
- Playwork
- Early Years Educator (EYE)
- Supporting Teaching and Learning in Schools
- Forest School Leader
- Business Administration
- Customer Service

*Please note that we are unable to enrol anyone onto Functional and GCSE courses until our Information & Enrolment evening on Tuesday 23rd June 2015, from 5.00pm - 7.00pm.*

**Higher and Adult Education Information Evening**  
**Tuesday 21st April | 5pm - 7pm**

**[www.asfc.ac.uk](http://www.asfc.ac.uk) | 0161 666 8215 | [adulted@asfc.ac.uk](mailto:adulted@asfc.ac.uk)**