



# Tameside Adults Safeguarding Partnership Board (TASPB)

Strategy 2022/25

# Tameside Adult Safeguarding Partnership Board Vision

*Everybody, irrespective of age, race, gender, culture, religion, disability or sexual orientation have a right to live with their rights protected, in safety, free from abuse and the fear of abuse*

Tameside Adult Safeguarding Partnership Board overarching aim is to help and safeguard adults with care and support needs to ensure these adults are free from abuse and the fear of abuse. TASPB has a role to ensure Safeguarding Adults is everybody's business and in doing so must apply 3 statutory functions as defined in the Care Act 2014:-

- Publish a Strategic Plan
- Publish Annual Report
- Commission Safeguarding Adult Reviews

To do this successfully the Board must lead adult safeguarding arrangements across Tameside and oversee and coordinate the effectiveness of the safeguarding work of the Statutory agencies and Partner agencies at the Board:-

## **Statutory agencies**

- Local Authority
- Greater Manchester Police
- NHS GM Integrated Care Organisation

## **Partner agencies**

- Healthwatch
- Greater Manchester Fire and Rescue Service
- Probation
- Tameside and Glossop Integrated Care NHS Foundation Trust
- Pennine Care Foundation Trust
- Jigsaw
- Change Grow Live
- North West Ambulance Service
- Care Quality Commission
- Elected Members

## Shared Priorities

TASPB business focuses on a range of issues which contribute to the wellbeing of Adults in Tameside and collaborative work to prevent abuse and neglect. In doing so TASPB also works with 4 strategic partnerships In Tameside to progress Shared Priority agendas:-

- Tameside Safeguarding Children Partnership (TSCP)
- Health and Wellbeing Board (HWB)
- Tameside Community Safety Partnership (TCSP)
- Domestic Abuse Board (DAB)

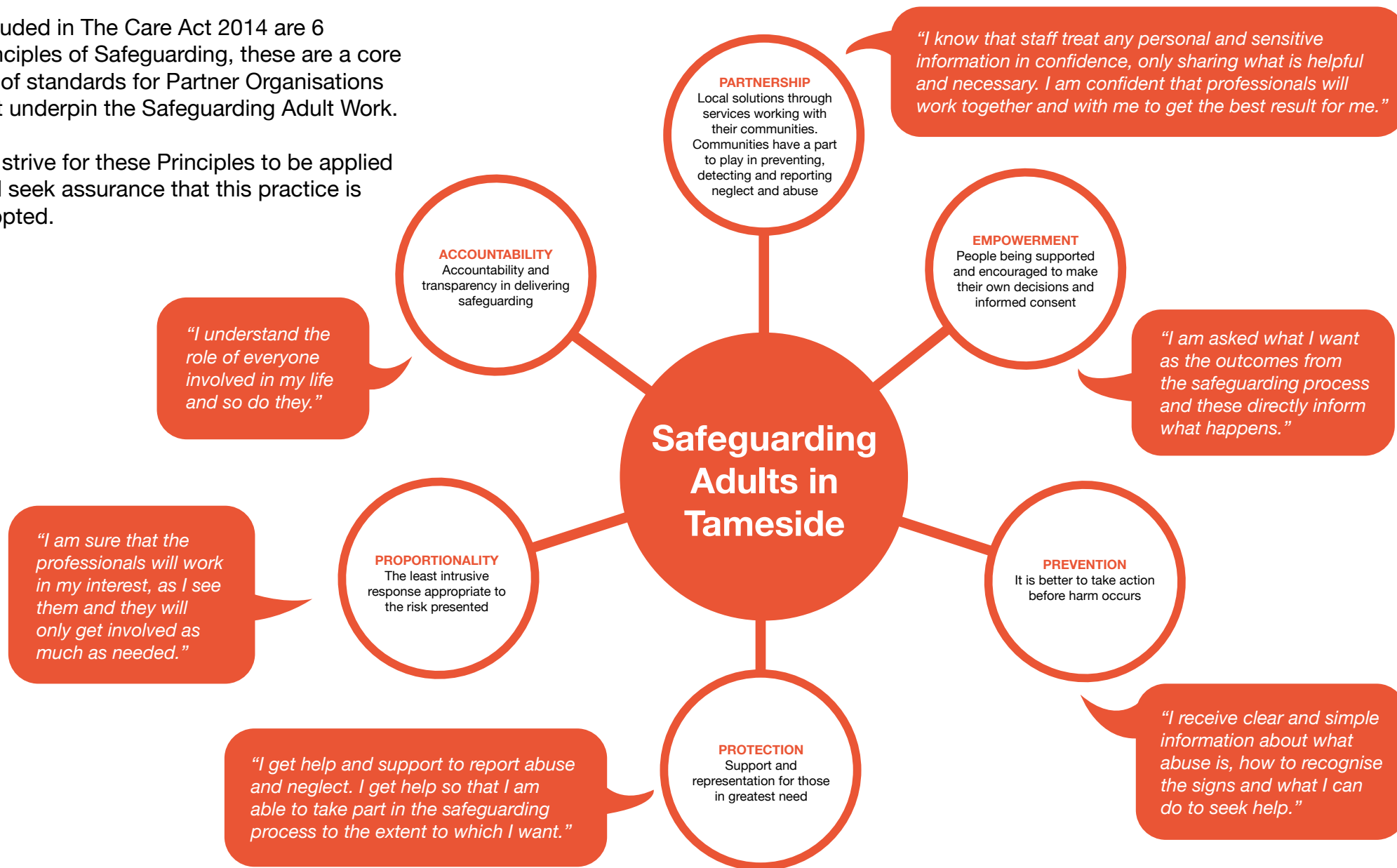
The Partnerships work collectively, applying the following principles to this work:-

- **Consolidate the work streams**  
Work together to identify existing work streams and new strategic priorities where there are opportunities to maximise efficiency and avoid duplication
- **Learning**  
Promote a culture of outcomes based learning through training and case reviews whilst developing organisational competence
- **Communication**  
Facilitate opportunities to promote safeguarding strategies and joint campaigns to safeguard children and adults at risk of abuse
- **Quality Assurance**  
Continually review the effectiveness of safeguarding activity to be assured that safeguarding practice is continuously improving and enhancing the quality of life for children and adults at risk of abuse

# Safeguarding Principles

Included in The Care Act 2014 are 6 Principles of Safeguarding, these are a core set of standards for Partner Organisations that underpin the Safeguarding Adult Work.

We strive for these Principles to be applied and seek assurance that this practice is adopted.



TASPB strategy 2019-2022 progressed the Board Plans to Safeguard Adults in Tameside. We have successfully responded to the previous priorities of Making Safeguarding Personal, Prevention and Quality assurance, to such an extent whilst these will remain a core focus for the Board they are now embedded as practice across the Partner Organisations. We acknowledge that Partnership working in Tameside has been the key to the success of the strategy and are assured all Partners are committed to Adult Safeguarding in Tameside. This work now provides the platform to continue to respond to the safeguarding agenda as it evolves during 2022 and beyond. We have reviewed business to date, whilst it is acknowledged a wealth of work will continue across Partner Organisations in Tameside to inform this safeguarding agenda, we have identified particular priorities as a focus over the next 3 years:-

- **Self-Neglect** - this type of abuse is included as a category under the Care Act. We recognise that this is an emerging theme of abuse in Tameside. Whilst the number of concerns are low, they appear to be increasing in Tameside. TASPB, are pro-active in their response to the Safeguarding Prevention Principle and we will strive to have assurance that Partner organisations provide a Person Centred approach to empower individuals to make choices and support for them to manage risks.
- **Neglect** - Strategies for the prevention of abuse and neglect are a core responsibility of TASPB. Recent local Safeguarding Adult Reviews have identified neglect as a pertinent theme. We acknowledge there is further work to complete to promote the signs and symptoms of neglect and support a multi-agency approach to protect Adults with care and support needs who are experiencing or at risk of this form of abuse.

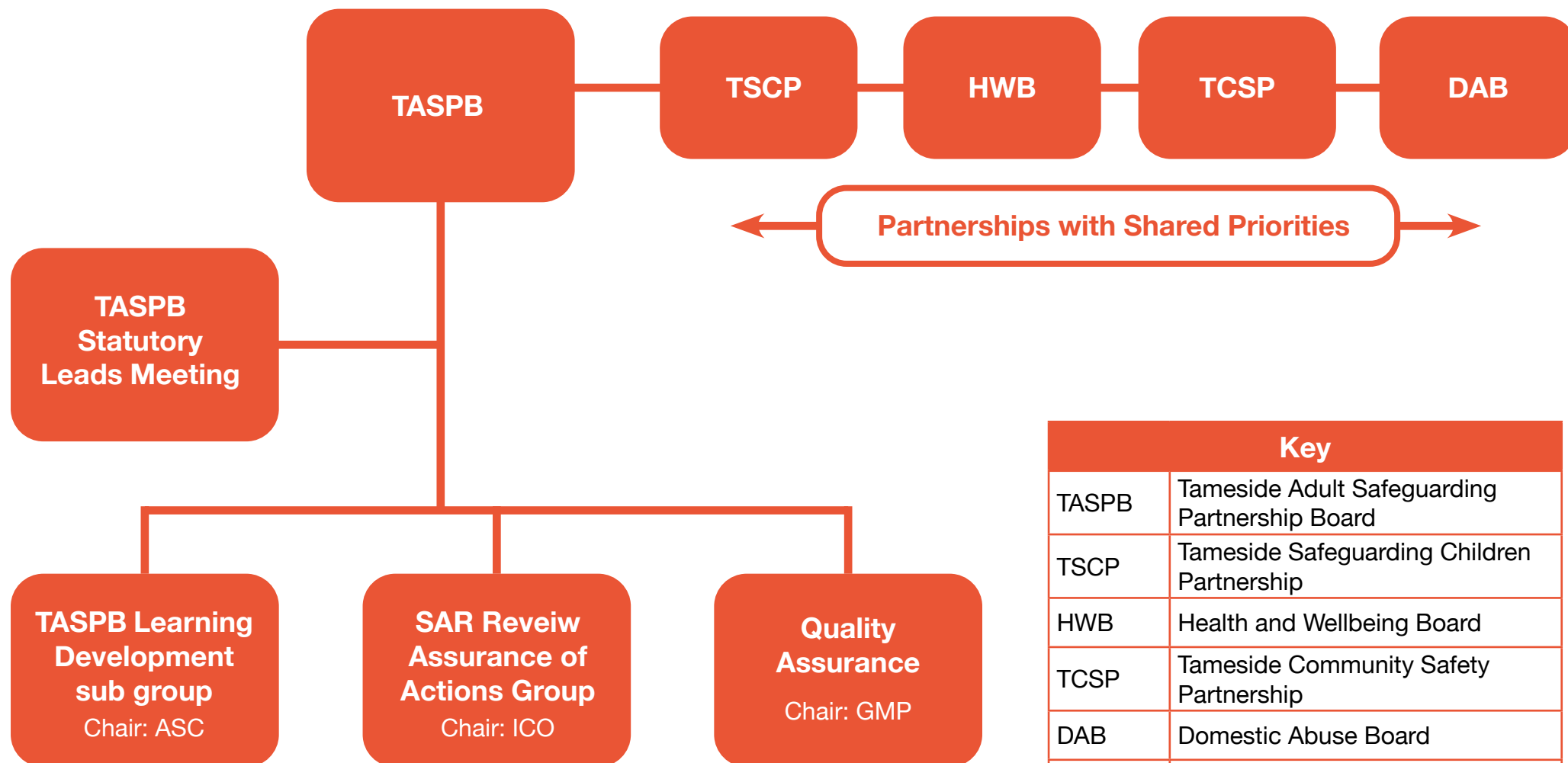
- **Adults experiencing Multi-disadvantage** – There is a strong commitment from TASPB to raise awareness, strengthen an integrated approach and improve knowledge and understanding of Adults experiencing Multi-disadvantage. We will seek assurance that there are strong cross-sector partnerships to respond to tackling multiple disadvantage and improving outcomes to prevent Adult Abuse in this cohort of people
- **Domestic Abuse** - Many circumstances are both safeguarding situations and domestic abuse. Whilst Organisations will respond and support individuals in these circumstances we are keen to enhance the support and want to be assured Partner Organisations have a workforce who are competent in demonstrating and understanding of the signs and symptoms of Domestic Abuse and the knowledge of pathways available to respond in the context of section 42 enquiries.

## Governance

TASBP will develop its governance framework in line with sub-groups and task and finish groups, holding these groups to account for the development of work plans aligned to the TASPB Business Plan and taking account of the overarching strategic aims and objectives. This will give assurance and take note of any ongoing risk assessment.

The effectiveness of the TASPB will be reviewed and reflected upon in our annual report.

# Governance Arrangements to support the Implementation of TASPb Strategy 2022-2025



Key	
TASPb	Tameside Adult Safeguarding Partnership Board
TSCP	Tameside Safeguarding Children Partnership
HWB	Health and Wellbeing Board
TCSP	Tameside Community Safety Partnership
DAB	Domestic Abuse Board
ICO	Integrated Care Organisation
SAR	Safeguarding Adult Review (SAR)