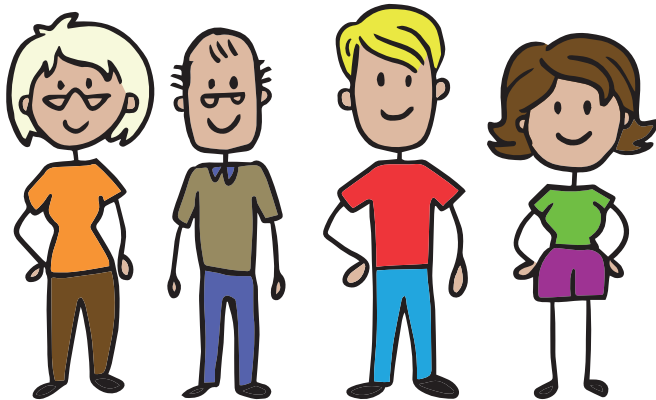


We would love to hear what you think about Signs of Safety.

Telephone 07812107783

or email

catherine.davis@tameside.gov.uk



EXPLANATIONS

Safety or Support Network:

People who are important to you and can help sort out problems.

Strengths Based Approach:

Noticing the good things.

Scaling:

Showing as a number how you feel.

Words and Pictures:

Explaining the worries to you.

Plan:

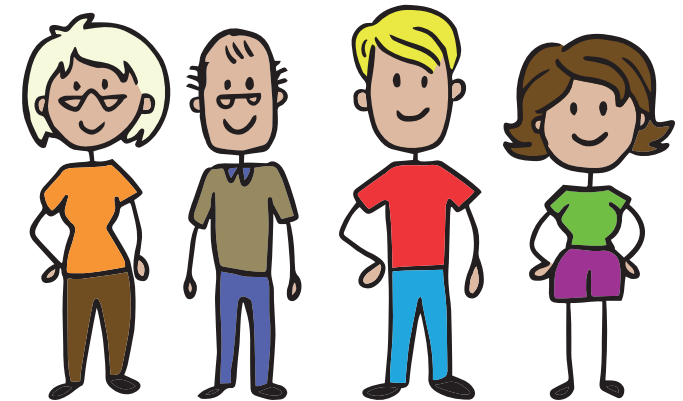
What you and your support people are going to do.



Tameside

Putting children and families at the heart of our practice

What is Signs of Safety?

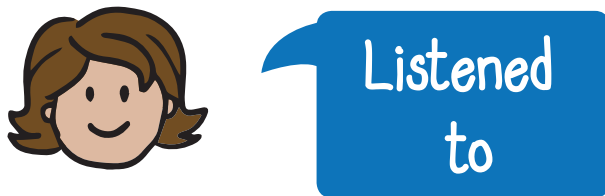


by the Children in Care Council



Signs of Safety is a **NEW** way of working in Tameside

We think it's important that
you are:

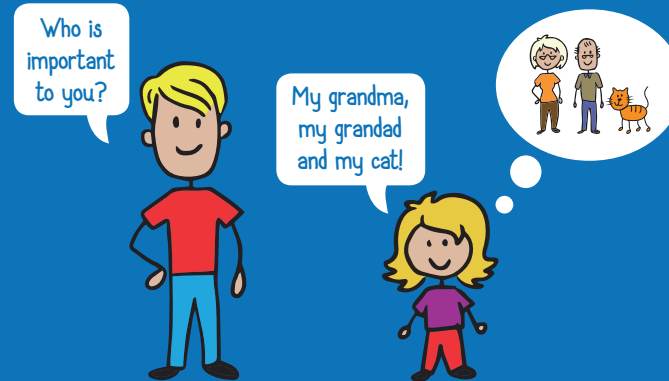


Signs of Safety will help
you with all of this!

HOW WILL IT DO THIS?

1. Signs of Safety will help find out who is important to you and is good at helping with problems.

This is called a safety or support network.



2. Signs of Safety will help find out about all the good things about you and your family.

This is called a strengths based approach.



3. It will help find out how you are feeling. You might be asked to think of a number to show how you feel.

This is called scaling.



4. It will help explain what the worries are to you.

This is called words and pictures.



5. It will help you and your support people come up with a plan which shows professionals how the problems or worries will be sorted out.

This is called a plan.

