

# Childcare Sufficiency Annual Report 2013

## Contents

1. Introduction
2. Legislation Update
3. The Borough of Tameside
4. Review of the Local Childcare Market
5. Highlighted extracts of Previous report
6. Summary
7. Recommendations
8. Appendices

## 1. Introduction

Section 6 of the Childcare Act 2006 introduced a new statutory duty on local authorities to ensure sufficient childcare to meet demand. The act defines sufficient childcare as:

*“As far as is reasonably practicable, that the provision of childcare is sufficient to meet the requirements of parents in the area who require childcare in order to enable them:*

- a) To take up or remain in work*
- b) To undertake education or training which could reasonably be expected to assist them to obtain work”*

The duty also applies to the provision of free early education and childcare and childcare for 3 and 4 year old children.

Section 11 of the Childcare Act 2006 requires local authorities to carry out a detailed assessment of the sufficiency of childcare in their area at least every 3 years and Tameside Council’s Childcare Sufficiency assessments were published in 2008 and 2011.

A sufficient childcare market is defined as one that develops sustainable childcare that is affordable and of high quality.

The assessment published in March 2011 reported that Tameside had a healthy and vibrant childcare market that was successfully meeting the needs of its population.

## 2. Legislation Update

The Department for Education consulted during March 2013 on proposed changes to the role of the local authority in early education and childcare. The proposal includes new “Draft Statutory Guidance for Local Authorities on the Exercise of their duties Relating to Early Education and childcare”, it is planned this will take effect from September 2013 and will include the proposal to repeal the requirement on local authorities to prepare assessments of the sufficiency of provision of childcare in their area, every 3 years.

This will be replaced with a duty to secure sufficient childcare so far is reasonably practicable for working parents or those studying or training for employment with children aged 0-14.

Taking into account where it is ‘reasonably practicable’ when assessing what sufficient childcare means in the area and including:

- The state of the local childcare market, including supply and demand
- The state of the labour market
- The quality and capacity of childcare providers including funding, staff, premises and experience.

The Statutory Guidance for Local Authorities on the Delivery of Free Early Education for Three and Four Year Olds and Securing Sufficient Childcare (2012) recommended that local authorities should “report annually to elected council members on how they are meeting their duty to secure sufficient childcare.”

### 3. The Borough of Tameside

#### 3.1 Description

Tameside Borough was created on 1 April 1974 and is one of the ten metropolitan districts of Greater Manchester. It consists of nine towns in a mainly urban area, stretching from the city of Manchester to the Peak District and shares its borders with Stockport, Oldham, Manchester and the Borough of High Peak.

Tameside is comprised of 19 wards and is characterised by some of the worst 5% of deprived areas nationally. Tameside is noted to be the 42<sup>nd</sup> most deprived borough nationally on the Index of Multiple Deprivation 2010.

See Appendix 1

#### 3.2 Population

The Childcare Sufficiency Assessment of 2011 described Tameside’s population as stable at 213,400 (estimated via the Office for National Statistics). However, the Census 2011 recorded a population of 233,763 which shows a growth of 20,363 or approximately 9.54%

#### 3.3 Ethnicity

The following table shows that the majority (91%) of residents in Tameside describe themselves to be White British. The remaining 9% being of Black and Minority Ethnic origins. This has not changed significantly since the last report.

	White		BME	
	No.	%	No.	%
<b>Tameside</b>	199,429	90.9	19,895	9.1
<b>East</b>	55,386	95.5	2,604	4.5
<b>North</b>	36,360	79.8	9,196	20.2
<b>South</b>	41,678	90.1	4,555	9.9
<b>West</b>	66,005	94.9	3,540	5.1

Source: Census 2011

#### 3.4 Age

Using data extracted from the Census 2011 the following table shows the breakdown of age across the borough and also by the administrative neighbourhoods – north, east, south and west. Notably from a childcare

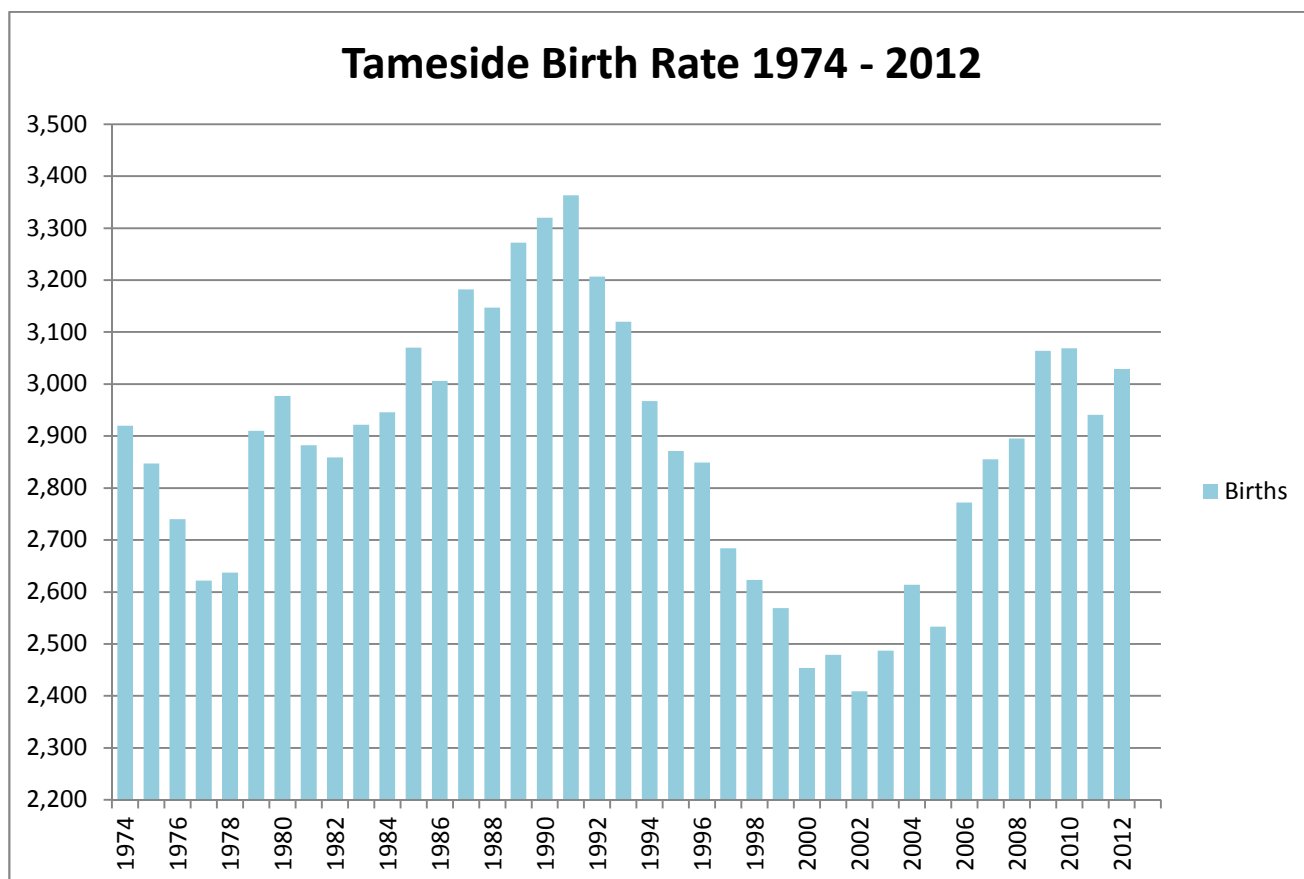
demand perspective, approximately 65% of the population is of working age: 16 to 64 years. This figure becomes significant when considered in conjunction with Birth Rate data below.

	0 to 4		0 to 15		16 to 64		65+	
	No.	%	No.	%	No.	%	No.	%
<b>Tameside</b>	14,439	6.6	42,708	19.5	142,415	64.9	34,201	15.6
<b>East</b>	3,797	6.5	11,230	19.4	38,343	66.1	8,417	14.5
<b>North</b>	3,263	7.2	9,288	20.4	29,767	65.3	6,501	14.3
<b>South</b>	3,305	7.1	9,545	20.6	29,636	64.1	7,052	15.3
<b>West</b>	4,074	5.9	12,645	18.2	44,669	64.2	12,231	17.6

Source: Census 2011

### 3.5 Birth Rate

The graph shows Tameside births from 1974 to 2012 and illustrates an upward trend for births across the borough. This will impact on places for early years and school age. The current trend is increasing however traditionally the birth rate tends to follow a fluctuating 25 year cycle.



### 3.6 Economic Growth

Since 2008 Tameside’s economy has been adversely affected by the global recession and has suffered to a greater extent than most other parts of Greater Manchester. Key indicators and information from Job Centre Plus indicates that Tameside is likely to experience a slower recovery than its neighbouring authorities.

The following table highlights the number of adults within the borough who are claiming job seekers allowance at each quarter during 2012.

#### Job Seekers Allowance (Age 16-64)

	Mar-12		Jun-12		Sep-12		Dec-12	
	No.	%	No.	%	No.	%	No.	%
<b>Tameside</b>	7,302	5.1	7,052	5.0	7,168	5.0	6,916	4.9
<b>East</b>	1,871	4.9	1,780	4.6	1,777	4.6	1,745	4.6
<b>North</b>	1,811	6.1	1,808	6.1	1,819	6.1	1,789	6.0
<b>South</b>	1,679	5.7	1,515	5.1	1,565	5.3	1,522	5.1
<b>West</b>	1,941	4.3	1,949	4.4	2,007	4.5	1,860	4.2

Source: NOMIS (ONS)

Data received via Job Centre Plus compares the numbers of JSA claimants over the last 4 years taken at the same point in the year:

- April 2010      6802    Taken from last sufficiency report published in 2011
- April 2011      6418    5.64% drop from previous year
- April 2012      7240    12.81% rise from previous year
- April 2013      7078    2.24% drop from previous year

This illustrates that despite minor fluctuations in the number of claimants from 2010 until 2013 overall there has been a 4.06% increase - some 276 additional adults (aged 16 – 65 years) who are claiming out of work benefits.

#### Key Out of Work Benefits<sup>1</sup>

The following table shows the number of people in the borough claiming out-of-work benefits. This includes: Job Seekers Allowance, Employment and Support Allowance (ESA), incapacity benefits, lone parent benefits and other income related benefits.

<sup>1</sup> Key out-of-work benefits consist of the groups: job seekers, ESA and incapacity benefits, lone parents and others on income related benefits.

	Feb-12		May-12		Aug-12		Nov-12	
	No.	%	No.	%	No.	%	No.	%
<b>Tameside</b>	27,925	19.6	27,445	19.3	27,115	19.0	26,700	18.7
<b>East</b>	6,825	17.8	6,770	17.7	6,625	17.3	6,500	17.0
<b>North</b>	7,040	23.7	6,960	23.4	6,890	23.1	6,775	22.8
<b>South</b>	6,190	20.9	6,005	20.3	5,890	19.9	5,855	19.8
<b>West</b>	7,870	17.6	7,710	17.3	7,710	17.3	7,570	16.9

Source: NOMIS (ONS)

### 3.7 Economic Activity

The following table indicates the breakdown of the borough according to economic activity which highlights that 68.8% of the borough is economically active.

	Economically Active		Economically Active: Employees		Economically Active: Self Employed		Economically Active: Unemployed		Economically Active: Full Time Student		Economically Inactive	
	No.	%	No.	%	No.	%	No.	%	No.	%	No.	%
<b>Tameside</b>	111,016	68.8	86,923	78.3	12,022	10.8	8,052	7.3	4,019	3.6	50,443	31.2
<b>East</b>	30,616	71.0	24,083	78.7	3,442	11.2	2,085	6.8	1,006	3.3	12,505	29.0
<b>North</b>	21,967	65.8	16,918	77.0	2,261	10.3	1,929	8.8	859	3.9	11,429	34.2
<b>South</b>	22,656	67.4	17,476	77.1	2,677	11.8	1,709	7.5	794	3.5	10,943	32.6
<b>West</b>	35,777	69.7	28,446	79.5	3,642	10.2	2,329	6.5	1,360	3.8	15,566	30.3

Source: Census 2011

### 3.8 Job Vacancies

The following table provides the number of employment vacancies within the borough during each quarter of 2012; it is worth noting that the final update of this dataset will be the Nov 2012 count. After this there will be no further updates to the Job Centre Vacancy series on Nomis. The North of the borough had the highest number of vacancies in the last quarter. The South had the least number in the same quarter. Overall the number of vacancies in Tameside has increased. This may indicate there are less people in work but also imply there are less people able to access work opportunities.

	Feb 12 (No.)	May 12 (No.)	Aug 12 (No.)	Nov 12 (No.)
<b>Tameside</b>	828	735	821	1063
<b>East</b>	290	164	207	186
<b>North</b>	249	252	213	494
<b>South</b>	107	109	234	151
<b>West</b>	182	210	167	232

Source: NOMIS (ONS)

### 3.9 School Readiness

While the revised EYFS provides a general definition of school readiness, this term can be widely interpreted. The EYFS defines school readiness as ‘the broad range of skills, knowledge and attitudes children need as foundations for good future progress.’ (*Statutory Framework for the Early Years Foundation Stage, page 4*). In practice this is accepted to mean that children:

- have strong social skills
- can cope emotionally with being separated from their parents
- are relatively independent in their own personal care
- have a curiosity about the world and a desire to learn.

Tameside accepts that being school ready is about more than just the child being ready for school. This transition needs the support and cooperation of all individuals involved, to create a holistic approach so a child has an enjoyable and positive experience. Schools should be ready for the child as much as the child is ready for school, helping smooth the transition between play based early learning and more formal classroom based teaching. Parents are encouraged to recognise that they are key to preparing their children for school. Key to this successful transition is positive cooperation between parents, childcare professionals and teachers.

The following table shows a significant number of children regarded not to be school ready. This is not dissimilar to statistical neighbours and strategies are in place across partners and agencies to address this situation.

	<b>Not School Ready</b>
	<b>%</b>
Tameside	41.4
East	42.4
North	39.1
South	46.0
West	37.5

Source: TMBC Children’s Services



## 4. Review of the Local Childcare Market

### 4.1 Childcare Supply

The total numbers of childcare provision that is currently available has not changed dramatically since the last full sufficiency report completed in March 2011.

The most significant change is that 3 settings originally designated as a pre-school have altered their childcare model and are now providing daycare services, which account for the biggest change. However with the pending implementation of free early education for targeted two year olds and capital monies being made available for 2 year place creation it is anticipated that the childcare market will naturally expand to accommodate these children over the coming 12 -18 months.

Type	2011	2012	Difference + -
Childminders	363	361	-2
Pre-school playgroups	25	22	-3
Private nurseries	36	39	+3
Out of school clubs	54	55	+1

(The figures given above are for providers who are listed with Families Information Service, some providers are not listed i.e. crèches that are not required to be registered with OfSTED as they offer under 2 hours of provision).

### 4.2 Breakdown of Current Childcare by Area

#### Ashton Area

Type	2008 Number of Providers	2010 Number of Providers	2010 No's of Places	2013 Number of Providers	2013 No's of Place
<b>PDN</b>	9	8	651	11	830
<b>Childminder</b>	57	46	125 (0-5)	51	153
<b>Playgroup/ Pre-School</b>	2	2	78	2	42
<b>Out of School (Registered)</b>	16	11	392	12	306
<b>Maintained</b>	15	15	580	15	494
<b>Totals</b>	99	82	1826	91	1825

Within the Ashton area there is an increase in the number of day care and childminder places however a reduction in the pre-school and out of school places. The total number of maintained nurseries has not altered but following the Tameside Nursery review there has been a reduction in the number of places available, largely due to empty places within maintained nurseries.

Across all 5 sectors the number of childcare places available remains the same.

**Denton/Droylsden/Audenshaw**

Type	2008 Number of Providers	2010 Number of Providers	2010 No's of Places	2013 Number of Providers	2013 No's of Place
PDN	10	10	697	10	783
Childminder	150	139	369	142	426
Playgroup/ Pre-School	11	7	203	8	230
Out of School	19	12	446	21	584
Maintained	18	18	828	18	728
<b>Totals</b>	<b>208</b>	<b>186</b>	<b>2543</b>	<b>199</b>	<b>2751</b>

In this area most sectors have seen an increase in the number of places available; however the maintained sector has seen a reduction in places again following the nursery review.

Overall in this area there is a slight increase in the number of places available across all sectors.

**Dukinfield/Stalybridge/Mossley**

Type	2008 Number of Providers	2010 Number of Providers	2010 No's of Places	2013 Number of Providers	2013 No's of Place
PDN	6	8	668	11	880
Childminder	131	112	285	99	297
Playgroup/ Pre-School	7	8	210	8	232
Out of School	13	11	421	16	481
Maintained	17	17	669	17	572
<b>Totals</b>	<b>174</b>	<b>156</b>	<b>2253</b>	<b>151</b>	<b>2462</b>

In this area there is an increase of the number of places available however in some cases the overall number of providers in the market place has reduced e.g. childminders.

There has also been a reduction in the number of places available in the maintained sector which was following the nursery review however overall the total number of places has increased.

## Hyde/Longdendale

Type	2008 Number of Providers	2010 Number of Providers	2010 No's of Places	2013 Number of Providers	2013 No's of Place
PDN	6	7	376	7	412
Childminder	63	71	212	69	207
Playgroup/ Pre-School	10	6	131	4	95
Out of School	11	3	80	6	191
Maintained	14	14	598	14	520
<b>Totals</b>	<b>104</b>	<b>101</b>	<b>1397</b>	<b>100</b>	<b>1425</b>

The total number of places available has increased however this is largely due to an increase in Out of School Club provision; places have decreased in the maintained sector as has childminders and also playgroup, pre-school places.

## Totals for Tameside

Type	2008 Number of Providers	2010 Number of Providers	2010 No's of Places	2013 Number of Providers	2013 No's of Place
PDN	31	33	2392	39	2905
Childminder	401	368	991	361	1083
Playgroup/ Pre-School	30	23	622	22	599
Out of School	59	37	1339	55	1562
Maintained	64	64	2675	64	2314
<b>Totals</b>	<b>585</b>	<b>525</b>	<b>8019</b>	<b>541</b>	<b>8463</b>

Overall across the borough the total number of places available has increased but the majority of these places are in Out of School Clubs and in Private Day Nurseries. Playgroup/Pre-school places have decreased as have school nursery places.

The overall number of childminders has decreased and the estimated number of places in this sector is based on each childminder having the ability to take 3 children under the age of 5 (as per OfSTED guidance) so the increase may not be realised depending on how many children childminders elect to take under the age of 5.

See Appendix 2 and 3 for Registered Childcare Places and Vacancies by ward in Tameside and Maintained Numbers and Vacancies – autumn 2012.

## 4.3 Demand for Childcare

During 2012 the Families Information Service (FIS) received a total of 5868 calls. Of these 1179 were named enquiries where full details were taken. A further breakdown confirmed that the majority of the named

enquiries related to more than one topic but in particular they related to childcare, nursery education or to find out about leisure within the borough.

Approximately 2500 of the total calls related to the Youth and Family Service, queries or referrals and some of these could be attributed to the fact that FIS no longer provides an outreach service.

FIS routinely send out "request feedback" questionnaires in relation to childcare enquiries and during the period 1<sup>st</sup> March to 31<sup>st</sup> December 2012, 396 were issued and 55 were completed and returned.

From the questionnaires families reported that 78% successfully found childcare of which 10 took up full time childcare and the rest part time care.

The reasons cited for not finding childcare were:

- No availability at their preferred choice
- The hours offered were not long enough for working parents e.g. before and after school clubs

However in many of the above situations many used a childminder as an alternative solution.

Parents are still reporting that quality, location, opening hours and cost are important factors when choosing childcare.

#### **4.4 Parental Questionnaires - Free Entitlement Funding**

A number of questionnaires were issued by FIS in relation to free early education, 88 forms were issued between 1<sup>st</sup> March and 31<sup>st</sup> December 2012 of those 11 were returned. Of those 11, 7 confirmed they found their preferred choice, and the provider was able to meet all their requirements. 4 were unable to find a place largely due to the fact that the chosen provider was full or they reported it costing too much. Some of the comments highlighted that there didn't appear to be enough nursery places which were local to homes.

#### **4.5 Parental Questionnaires - Service**

A number of questionnaires were issued in relation to the service Families Information Service provide, 31 were returned and all felt the advice and information met their needs and that they would recommend the service to others. Some of the comments highlighted that the advertising and marketing of the service needed to be more prominent especially in schools, maternity services, hospitals and to also provide more leaflets.

Based on the information provided and the evidence received families are able in the main to find a service they were seeking or where this was not possible a viable alternative.

#### **4.6 Free Places for Three and Four Year Old Children**

In Tameside according to Department for Education national first statistical release data provided to all local authorities during 2013, where data is sourced from the January census 2013 indicates that 97% of 3 and 4 year olds are taking up some or all of their free early education funding, which is 15 hours per week for 38 weeks of the year.

<b>Percentage of 3- and 4-year-old children benefitting from funded early education places by local authority</b>			
<b>All providers - Percentage of population</b>			
<b>Year</b>	<b>2011</b>	<b>2012</b>	<b>2013</b>
<b>Percentage</b>	97%	96%	97%

The level of take up indicates that there are sufficient places across the borough. However with the implementation of early education for 2 year olds it is anticipated that the impact of place creation for two year olds across the borough will also impact on general place creation for other age ranges.

See Appendix 7 - Map of Childcare providers delivering free Early Education funding

#### **4.7 Free Places for Two Year Old Children**

From 1st September 2013, 20% of two year olds will be entitled to a free 15 hour early education and childcare place. Eligibility for phase 1 is the same as for that entitlement to Free School Meals (i.e. they are families whose income is below £16,190 and on certain benefits). Anticipated take up of places for September 2013 is around 700 children.

The number of two year places will be increased on a phased basis for the borough in order to meet the potentially eligible numbers from September 2013 when it becomes statutory. It is planned throughout 2013 to undertake a specific sufficiency assessment of the availability of two year places and to map by area across the borough where additional places will be needed. Capital monies have been made available by the Department for Education for Tameside to increase the number of registered 2 year old places within the borough to help meet the needs of the expanded free entitlement funding. There are considerable capacity issues for the local authority to address with the funding. Grant applications will be encouraged from existing and new providers to increase the number of registered places.

Based on an initial sufficiency exercise undertaken during the latter part of 2012 where the number of children needing a place for September 2013 were mapped by ward and compared against the total number of places that were immediately available at that given point in time (December 2012) Findings illustrated a need for approximately 100 new places in the borough to meet sufficiency needs for all potential 2 year olds requiring a place by September 2013. Further assessment for phase 2 of the implementation of two year olds (Sept 2014) is required on a termly basis during 2013 to identify further gaps in sufficiency to meet statutory requirements and ensure sufficient places are available for 2 year olds.

#### **4.8 Childcare for Children Aged 5-11 and During School Holidays**

The number of Out of School clubs has increased since the previous assessment, from 1339 places to 1562 which indicates a continued demand for this service. It is also worth noting that childcare for children aged 5-11 can be provided by a range of other providers e.g. day nurseries, and childminders. Using the sufficiency data collated by FIS across 2012 it indicated that 10% of their enquiries related to out of school club provision. Of the parental questionnaires returned to FIS there were three situations highlighted for childminders where a drop off and pick up service was needed in Droylsden and Hattersley. In all cases matches were identified for

childminders in these areas providing this service however they didn't satisfy the parents' personal preference and these circumstances identified do not constitute an identified gap in provision.

#### 4.9 Childcare for Disabled Children and Children with Special Educational Needs (SEN)

The Early Years Provider Development Team provides training and support to childcare settings to enable them to offer inclusive childcare provision. Since October 2012 all providers are able to access SENCO surgeries where they receive guidance to effectively deliver the SEN code of practice. The 2011 sufficiency assessment identified that parents of children with additional needs felt there was not enough childcare available to them. However it also found that many childcare providers were able to accommodate children with disabilities and/or additional needs. There also appeared to be a misconception by parents that mainstream childcare settings could not meet their needs and that only specialist childcare settings could do this. This is an issue that is experienced nationally.

Data provided from the Census 2011 highlights that 3.9 % of children in the borough are identified as having long term health problem or a disability (Age 0 to 15):

	Day-to-day activities limited		Day-to-day activities not limited	
	No.	%	No.	%
<b>Tameside</b>	1,655	3.9	41,053	96.1
<b>East</b>	406	3.6	10,824	96.4
<b>North</b>	387	4.2	8,901	95.8
<b>South</b>	326	3.4	9,219	96.6
<b>West</b>	536	4.2	12,109	95.8

Source: Census 2011

A review of SEN provision across Tameside commenced in April 2013, however the findings of this report will not be available until autumn 2014. An Independent Consultant has been commissioned to undertake the review. The report will include an audit of current early years high need nursery settings to identify gaps and pressure points in provision.

#### 4.10 Quality of Childcare

The DfE report "More Great Childcare – Raising Quality and Giving Parents More Choice" (January 2013) sets out a plan of action for how the government will achieve its vision of a dynamic childcare market for early education. It emphasises that good quality childcare is vital to ensuring global success by helping parents back to work and readying children for school and, eventually, employment.

The plans in the document are the first step to encourage all providers to learn from the best, and learn from effective practice in other countries. They set out the government's proposals to build a stronger and more professional early years workforce and to drive quality through everything it does. The document outlines the government's aims to:

- build a stronger, more capable workforce, with more rigorous training and qualifications, led by a growing group of Early Years Teachers;
- drive up quality, with rigorous OfSTED inspection and incentives for providers to improve the skills and knowledge of their staff;
- attract more, high quality providers with new childminder agencies, which will recruit new people, train and guide them and lever up quality in an area of the sector that has lagged behind;
- free providers to offer more high quality places, with greater flexibility to invest in high-calibre staff and more choice for parents.

The document suggests a move to OfSTED becoming the sole arbiter of quality. In response to this the following tables provide a breakdown of all the key types of providers according to their OfSTED rating (data collated as at autumn 2012):

See appendix 4, 5 and 6 for maps of PVI provision by type and by OfSTED rating.

<b>Group Settings and Independent Schools</b>	<b>Actual</b>	<b>Percentage %</b>
Inadequate	0	0
Satisfactory	17	24.6
Good	44	63.8
Outstanding	4	5.8
Not Yet Graded	4	5.8

There are 69 group providers in total with approx. 70% rated as good or outstanding.

<b>Out of School Clubs</b>	<b>Actual</b>	<b>Percentage %</b>
Inadequate	0	0
Satisfactory	20	35
Good	31	54.4
Outstanding	3	5.3
Exempt	3	5.3

There are 57 Out of School Clubs and some may also be run alongside group provision with approximately 60% rated as good or outstanding.

<b>Childminders</b>	<b>Actual</b>	<b>Percentage %</b>
Inadequate	2	0.6
Satisfactory	112	32
Good	170	48.60
Outstanding	8	2.2
Other	58	16.60

There are in total 350 childminders within the borough, approximately half of these are rated good or outstanding. There are a number of childminders banded as other, who have not been inspected or when the inspection took place they had no minded children at that time.

See appendix 4, 5 and 6 for maps of PVI provision by type and by OfSTED rating.

#### 4.11 Affordability of Childcare

Childcare costs vary from area to area within the borough and from type to type however some typical childcare costs in Tameside based on a full time attendance e.g. 50 hour of care per week and 15 hours for sessional care are:

##### Day Nurseries

Under two's per week attending 50 Hours	£157
Aged 2 plus per week attending 50 hours	£153

##### Childminders

The average hourly rate is £3.75, however many offer concessions on these amounts for full time childcare based on an average hour cost of 3.75 per hour and under and over 2's	£187.50
---	---------

**Pre-school and playgroups** offer sessional care so cannot be compared like for like, attendance based on 15 hours per week cost vary between £37.50 and £54.35.

**Out of school provision** can be offered at various providers however typical costs include:

Out of school club for 15 hours per week	£59.00
Weekly costs for childminder's who picks up after school providing care till 6pm	£56.00

The most expensive full day care provision in Tameside after concessions is £171.00 per week

According to the Daycare Trust's annual childcare survey 2013 the average hourly rate for a childminder with an under 2 is £3.93 per hour and the average weekly cost for a full time nursery place is £217.

The cost of childcare in the North West remains lower than average.

## 5. Context and Highlighted Extracts from the Summary of the CSA 2011

The report of 2011 did not highlight any major geographical gaps in the borough however in order to determine the state of the market place a full gap analysis was recommended. Where there were highlighted gaps these



were not necessarily reflected in the demand for places as gaps may exist where there is a low population of people in a large area.

The report identified that half of the parents surveyed felt that while cost of formal childcare was a consideration, quality, location and opening hours were regarded to be more important.

Parents of disabled children reported that they found childcare expensive. Various reasons were given including personal financial circumstances and situations when providers passed on additional resource costs to parents. Parents of children with disabilities also expressed the view that there was not enough choice of childcare providers that they were confident could safely look after their children. This situation is experienced nationally.

The general opinion of parents and employers is that there was adequate childcare at the times when most people needed it, with the majority using childcare for the working day over Monday to Friday. As expected there is less demand for full week care and limited need for care before 7.30 am or after 6pm.

It was reported that there was an adequate range of childcare for all age ranges although there was less demand for older children. For this age range it was noted there have been some issues with sustainability when expressed demand was not realised resulting in the provision closing in some cases.

## 6. Summary

One of the biggest challenges in Tameside over the next 18 months will be to ensure there are sufficient places to meet expected demand for new two year places from September 2013. Our current projections suggest that we will require the following number of places in preparation for September 2013. (As reported on the Tameside Self Evaluation Form (SEF) – JANUARY 2013)

	<b>September 2013 (children in families meeting criteria also used for free school meals, and looked after children)</b>	<b>Notes</b> Assumptions taken to calculate this number?
Estimated number of children requiring 15 hour places	703	*(Based on the DfE estimated figures)
How many 15 hour places do you estimate already exist in your area?	597	448 vacancies plus 149 already in place from Sept 2012
How many new 15 hour places do think will be needed?	106	
What, in summary is your plan to develop new places with providers?	Previous briefings and networks have kept providers up to date with the need for the sector to expand. By the end of January all providers will be given a sufficiency report by geographical ward showing which areas of the borough will be prioritized for capital expansion. This report is based on the number of eligible children and a vacancy audit undertaken in December. Following legal sign off regarding the grant process within the authority further briefings will be arranged (towards the end of March 2013) and monies will be allocated on a £ per place	

	created basis. Schools will also receive information about the opportunities to develop places on site and potential space within the children’s centre is also being reviewed. A few existing providers have already stated interest in the opportunities and are actively pursuing suitable locations within the borough.
--	---

The Local Authority will need to work with provider partners to find innovative ways in which places can be created without major capital funding.

Progress towards the development of these places will be monitored on a termly basis with individual strategies developed and put in place in areas where place availability is a cause for concern.

The impact of further childcare expansion across the borough to meet demand will impact on place creation across all age ranges which are in line with the rise in birth rate over the last few years.

The information provided within this report identifies some pockets where demand exceeded supply however these are quite specific to a particular requirement and are not indicative of the whole borough.

The following areas are under particular review:

- Review of SEN
- Analysis of Sufficiency of Two year places

A take up for free entitlement for three and four year olds is identified at 97% this indicates a high take up across the borough for three and four year olds across the maintained and private, voluntary and independent sector.

## 7. Recommendations

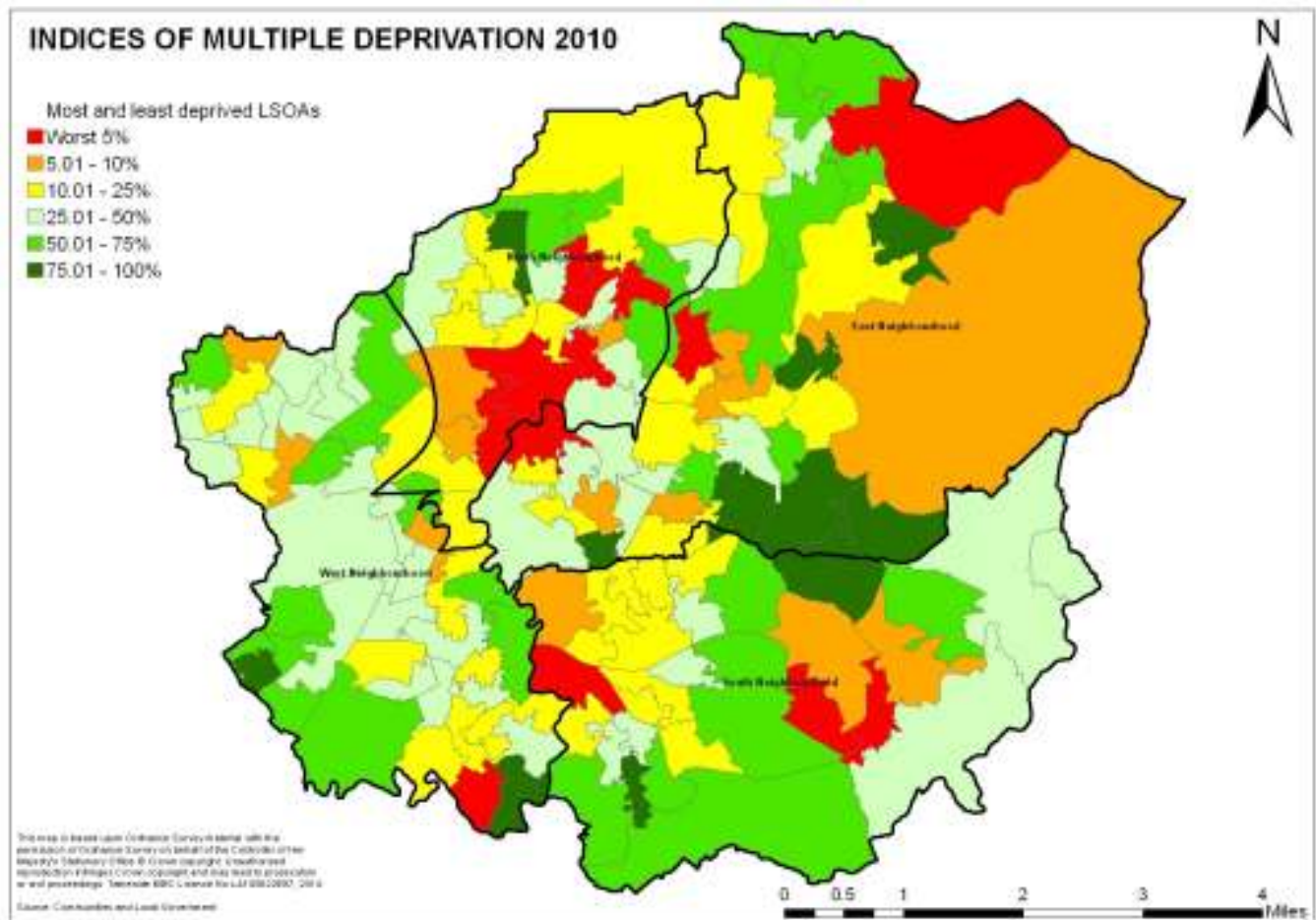
The report of 2011 did not highlight any major geographical gaps in the borough, the data compiled for this report shows that the position is broadly similar.

To undertake the following suggested recommendations:

1. Formulate a strategy and action plan for the development of new 2 year places across the borough, which should include a regular assessment of termly sufficiency to inform on future place creation, implementation of the project and strategies to monitor progress.
2. Using government allocated capital monies support and encourage providers to develop additional funded 2 year old places where required, against indicative targets provided by the Department of Education (DfE).
3. Identify strategies to enable providers to become more self-reliant and responsible for improvement of their quality of childcare.
4. Identify a sustainable approach for the longer term review of sufficiency of childcare across the borough in light of the government’s intention to repeal the requirement on local authorities to prepare assessments of the sufficiency of provision of childcare in their area, every three years.

## 8. Appendices

### Appendix 1



## Appendix 2

### Registered Childcare Places and Vacancies by ward in Tameside.

**Note:** Registered places include the number of full time equivalent places e.g. a child attending 5 full days e.g. morning and afternoon which

**Note:** Vacancies include the total number of individual sessions vacant for each day of the week e.g. number of vacancies for each morning and afternoon, which is reflected by the volume whereas the registered places is for full time equivalent.

<b>Ashton Under Lyne</b>			<b>Vacancies</b>		
<b>Provision Type</b>	<b>No of Settings</b>	<b>Registered Places</b>	<b>AM</b>	<b>PM</b>	<b>Hols</b>
Full Day Care	11	830	416	497	-
Pre-School/Playgroup	2	42	25	25	-
Childminder					-
Out of School Club	12	306	108	84	60
<b>Total</b>	<b>25</b>	<b>1178</b>	<b>549</b>	<b>606</b>	<b>60</b>

<b>Audenshaw</b>			<b>Vacancies</b>		
<b>Provision Type</b>	<b>No of Settings</b>	<b>Registered Places</b>	<b>AM</b>	<b>PM</b>	<b>Hols</b>
Full Day Care	3	95	157	145	-
Pre-School/Playgroup	1	30	0	0	-
Childminder					-
Out of School Club	6	167	21	14	8
<b>Total</b>	<b>10</b>	<b>292</b>	<b>178</b>	<b>159</b>	<b>8</b>

<b>Denton</b>			<b>Vacancies</b>		
<b>Provision Type</b>	<b>No of Settings</b>	<b>Registered Places</b>	<b>AM</b>	<b>PM</b>	<b>Hols</b>
Full Day Care	5	415	249	225	-
Pre-School/Playgroup	4	104	90	115	-
Childminder					-
Out of School Club	11	50	37	72	93
<b>Total</b>	<b>25</b>	<b>569</b>	<b>376</b>	<b>412</b>	<b>93</b>

<b>Droylsden</b>			<b>Vacancies</b>		
<b>Provision Type</b>	<b>No of Settings</b>	<b>Registered Places</b>	<b>AM</b>	<b>PM</b>	<b>Hols</b>
Full Day Care	2	114	141	150	-
Pre-School/Playgroup	3	96	0	0	-
Childminder					-
Out of School Club	4	80	12	10	0
<b>Total</b>	<b>9</b>	<b>290</b>	<b>513</b>	<b>160</b>	<b>0</b>

<b>Dukinfield</b>			<b>Vacancies</b>		
<b>Provision Type</b>	<b>No of Settings</b>	<b>Registered Places</b>	<b>AM</b>	<b>PM</b>	<b>Hols</b>
Full Day Care	3	203	161	164	-
Pre-School/Playgroup	3	72	28	28	-
Childminder					-
Out of School Club	7	187	71	61	40
<b>Total</b>	<b>13</b>	<b>462</b>	<b>260</b>	<b>253</b>	<b>40</b>

<b>Hyde</b>			<b>Vacancies</b>		
<b>Provision Type</b>	<b>No of Settings</b>	<b>Registered Places</b>	<b>AM</b>	<b>PM</b>	<b>Hols</b>
Full Day Care	5	339	248	203	-
Pre-School/Playgroup	1	25	0	0	-
Childminder					-
Out of School Club	6	191	70	70	16
<b>Total</b>	<b>12</b>	<b>555</b>	<b>318</b>	<b>273</b>	<b>16</b>

<b>Longdendale</b>			<b>Vacancies</b>		
<b>Provision Type</b>	<b>No of Settings</b>	<b>Registered Places</b>	<b>AM</b>	<b>PM</b>	<b>Hols</b>
Full Day Care	2	73	71	88	-
Pre-School/Playgroup	3	70	0	0	-
Childminder					-
Out of School Club	0	-	-	-	-
<b>Total</b>	<b>5</b>	<b>143</b>	<b>71</b>	<b>88</b>	<b>0</b>

<b>Mossley</b>			<b>Vacancies</b>		
<b>Provision Type</b>	<b>No of Settings</b>	<b>Registered Places</b>	<b>AM</b>	<b>PM</b>	<b>Hols</b>
Full Day Care	2	210	15	23	-
Pre-School/Playgroup	1	30	10	10	-
Childminder					-
Out of School Club	2	60	10	10	40
<b>Total</b>	<b>5</b>	<b>300</b>	<b>35</b>	<b>43</b>	<b>40</b>

<b>Stalybridge</b>			<b>Vacancies</b>		
<b>Provision Type</b>	<b>No of Settings</b>	<b>Registered Places</b>	<b>AM</b>	<b>PM</b>	<b>Hols</b>
Full Day Care	6	467	631	645	-
Pre-School/Playgroup	4	130	133	145	-
Childminder					-
Out of School Club	7	234	69	59	66
<b>Total</b>	<b>17</b>	<b>831</b>	<b>833</b>	<b>849</b>	<b>66</b>

## Appendix 3

### Maintained Numbers and Vacancies – autumn 2012

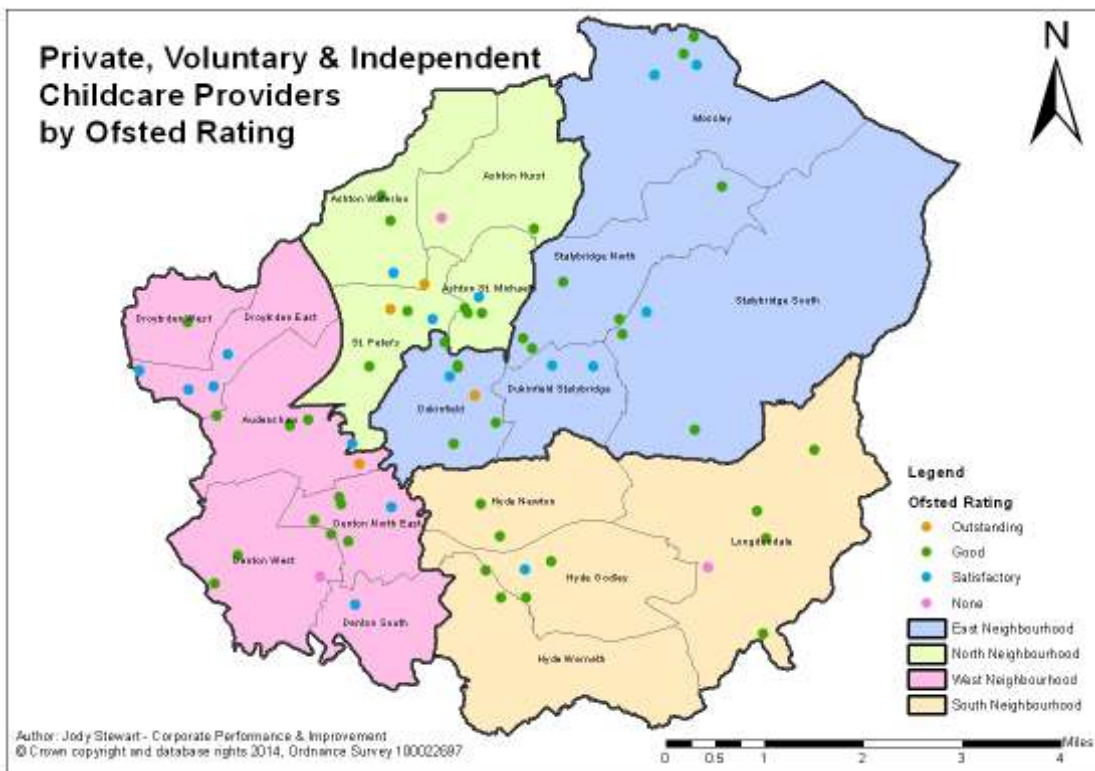
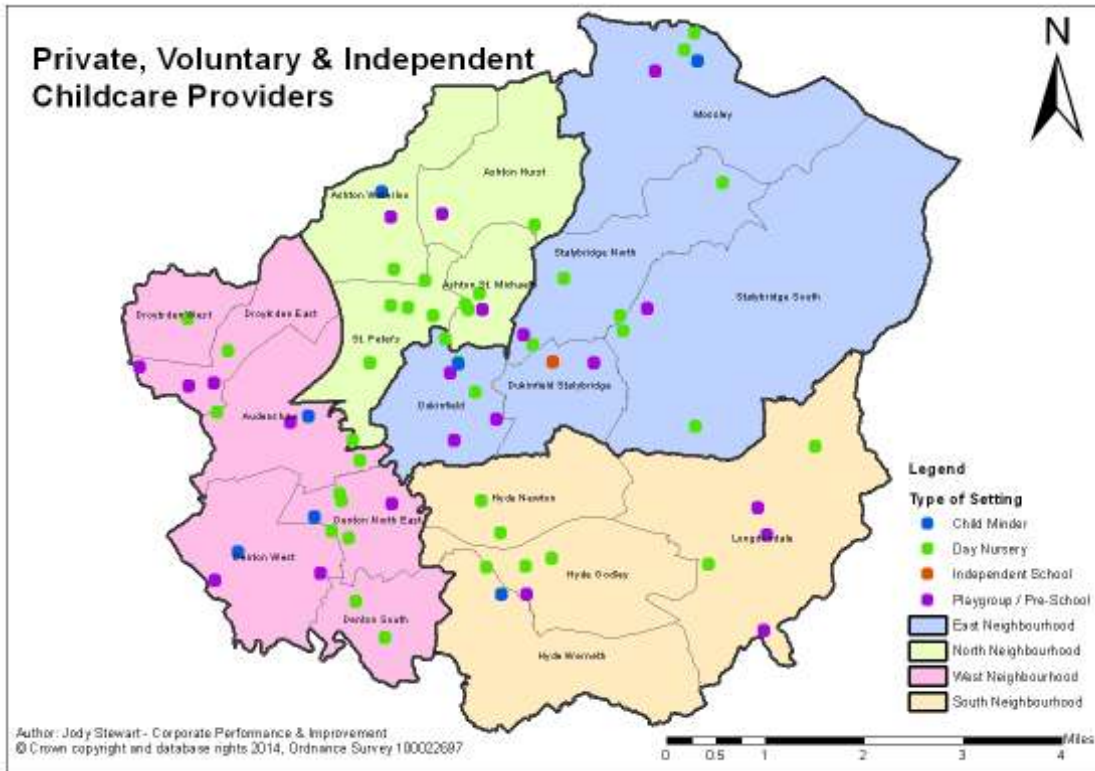
Ashton-Under-Lyne			
School	No of Places	Actual Pupils	Variance
Broadoak Primary School,	26	26	0
Canon Burrows CE Primary School	52	49	3
Canon Johnson CE Primary School	26	21	5
Holden Clough Community Primary School	26	24	2
Holy Trinity CE Primary School	39	39	0
Hurst Knoll St James CE Primary School	26	23	3
Our Lady of Mount Carmel RC Primary School	26	24	2
Parochial CE Primary School	26	26	0
Rosehill Methodist Community Primary School	52	49	3
St Christopher's RC Primary School	26	26	0
St James' CE Primary School	26	25	1
St Peter's CE Primary School	26	26	0
The Heys Primary School	26	26	0
Waterloo Primary School	52	22	30
West End Primary School	39	43	+4
<b>Totals</b>	<b>494</b>	<b>449</b>	<b>45</b>
Audenshaw			
School	No of Places	Actual Pupils	Variance
Aldwyn Primary School	39	39	0
Poplar Street Primary School	52	51	1
St Anne's RC Primary School	26	31	+5
<b>Totals</b>	<b>117</b>	<b>121</b>	<b>+4</b>
Denton			
School	No of Places	Actual Pupils	Variance
Corrie Primary School	39	37	2
Dane Bank Primary School	26	29	+3
Greswell Primary School	52	49	3
Linden Road Primary School	52	30	22
Manor Green Primary School	52	52	0
Russell Scott Primary School	52	49	3
St John Fisher RC Primary School	26	26	0
St Mary's RC Primary School	26	24	2
West End Primary School	52	49	3
<b>Totals</b>	<b>377</b>	<b>345</b>	<b>32</b>

<b>Droylsden</b>			
<b>School</b>	<b>No of Places</b>	<b>Actual Pupils</b>	<b>Variance</b>
Fairfield Road Primary School	39	41	+2
Greenside Lane Primary School & Early Years Centre	52	53	+1
Manchester Road Primary School	26	26	0
Moorside Primary School	52	43	9
St Mary's CE Primary School	26	23	3
St Stephen's RC Primary School	52	51	1
<b>Totals</b>	<b>247</b>	<b>237</b>	<b>10</b>
<b>Dukinfield</b>			
<b>School</b>	<b>No of Places</b>	<b>Actual Pupils</b>	<b>Variance</b>
Broadbent Fold Primary School	26	26	0
Lyndhurst Community Primary School	26	26	0
Ravensfield Primary School	52	48	4
St John's CE Primary School	26	25	1
Yew Tree Community Primary School	94	67	27
<b>Totals</b>	<b>224</b>	<b>192</b>	<b>32</b>
<b>Hyde</b>			
<b>School</b>	<b>No of Places</b>	<b>Actual Pupils</b>	<b>Variance</b>
Bradley Green Primary School	26	23	3
Dowson Primary School	52	54	+2
Flowery Field Primary School	52	50	2
Gee Cross Holy Trinity C of E Primary School	26	26	0
Godley Primary School	26	26	0
Greenfield Primary School	39	35	4
Leigh Primary School	39	32	7
Oakfield Primary School	26	25	1
St George's CE Primary School	26	25	1
St Paul's Catholic Primary School	26	26	0
<b>Totals</b>	<b>338</b>	<b>322</b>	<b>16</b>
<b>Hattersley</b>			
<b>School</b>	<b>No of Places</b>	<b>Actual Pupils</b>	<b>Variance</b>
Arundale Primary School	52	27	25
Pinfold Primary School	52	45	7
St James Catholic Primary School	26	11	15
<b>Totals</b>	<b>130</b>	<b>83</b>	<b>47</b>

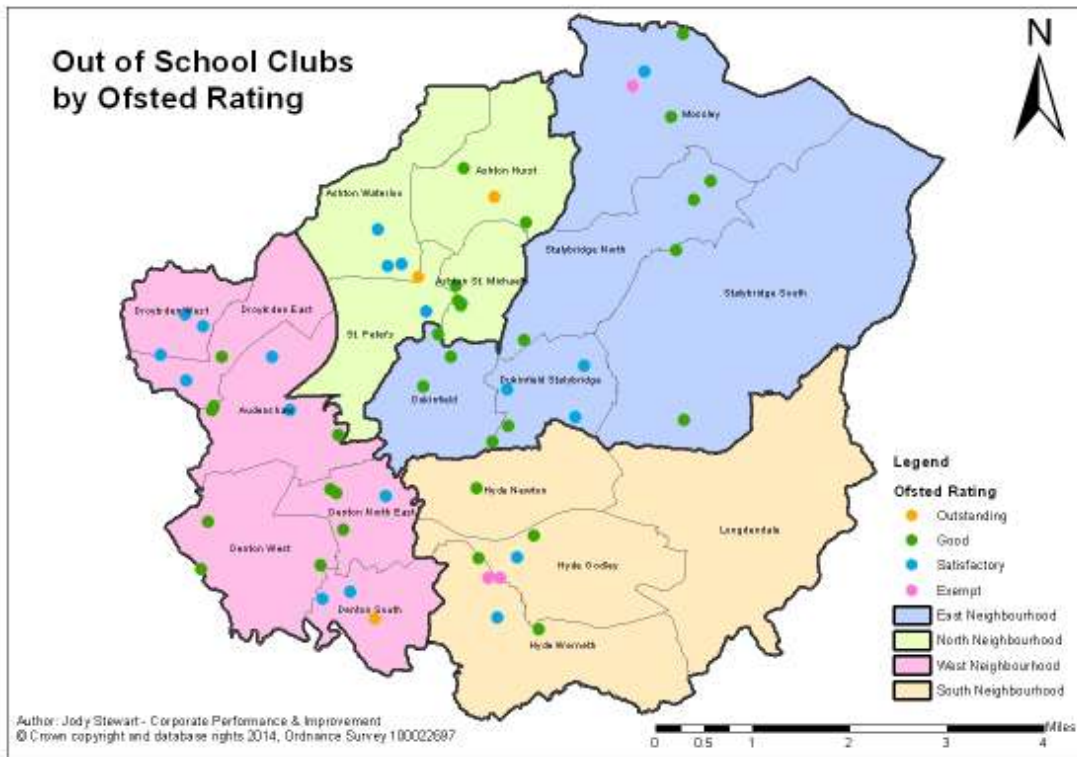
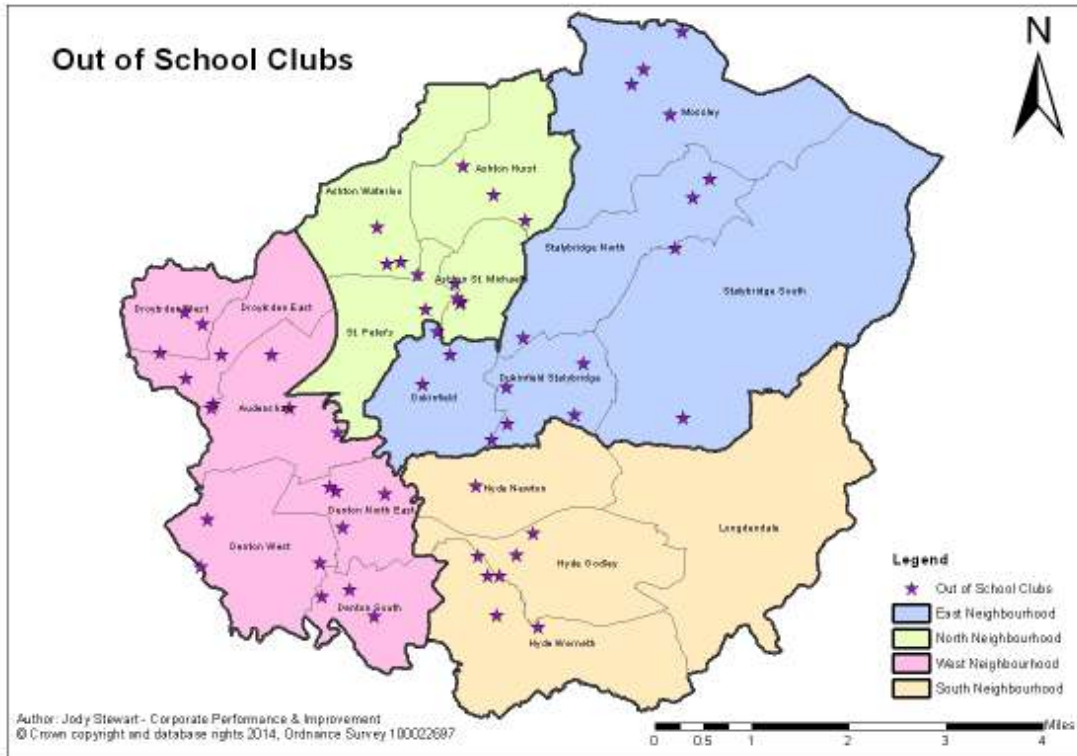
<b>Longdendale</b>			
<b>School</b>	<b>No of Places</b>	<b>Actual Pupils</b>	<b>Variance</b>
Hollingworth Primary School	26	26	0
<b>Mossley</b>			
<b>School</b>	<b>No of Places</b>	<b>Actual Pupils</b>	<b>Variance</b>
Livingstone Primary School	26	16	10
Micklehurst All Saints CE Primary School	26	20	6
Milton St John's CE Primary School	26	25	1
St George's CE Primary School	26	14	12
St Joseph's Primary School	26	18	8
<b>Totals</b>			
<b>Stalybridge</b>			
<b>School</b>	<b>No of Places</b>	<b>Actual Pupils</b>	<b>Variance</b>
Arlies Primary School	26	20	6
Gorse Hall Primary School	52	44	8
Millbrook Primary School	39	40	+1
Silver Springs Primary Academy	39	36	3
St Peter's Catholic Primary School	26	26	0
St Raphael's Catholic Primary School	26	25	1
Wild Bank Primary School	39	22	17
<b>Totals</b>	<b>247</b>	<b>213</b>	<b>34</b>



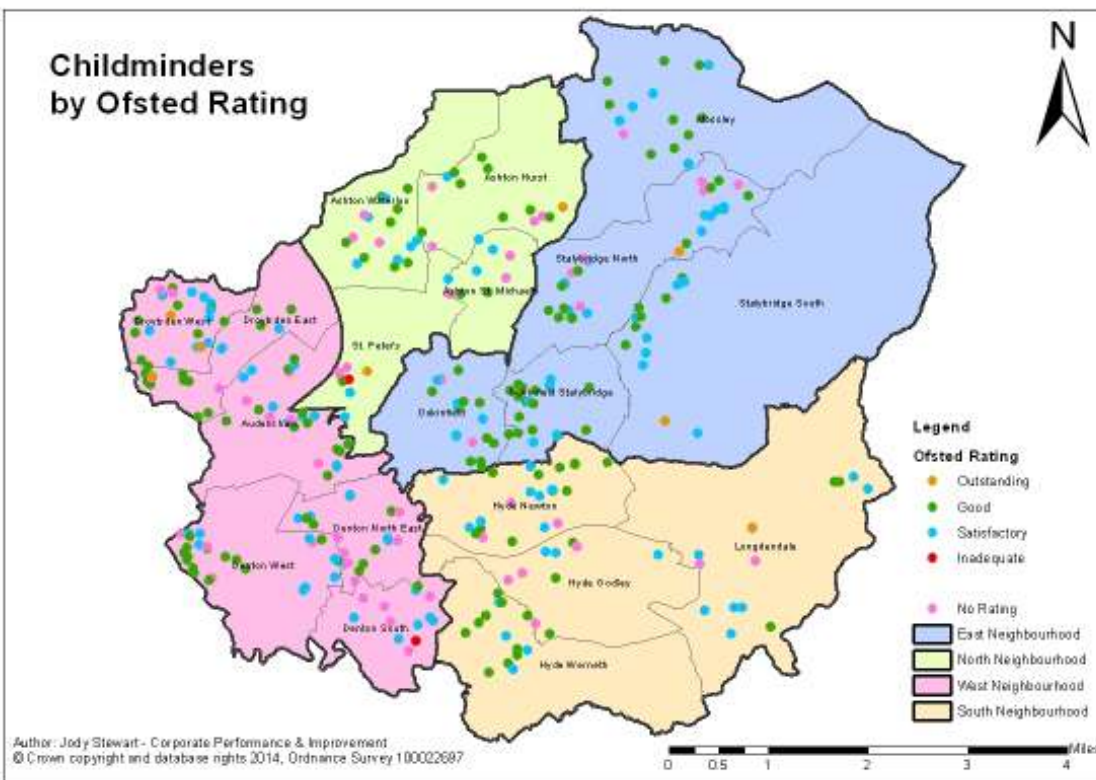
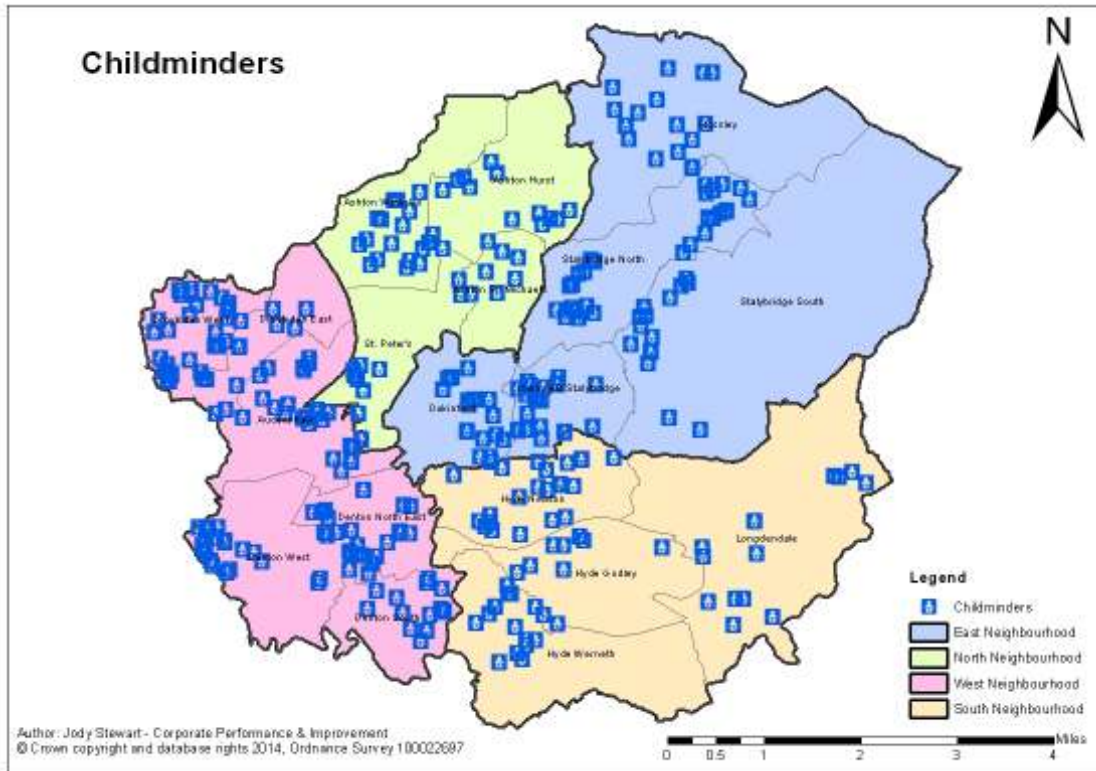
Appendix 4



Appendix 5



Appendix 6





Appendix 7

