

#ProudTameside

ISSUE 96 | SPRING 2025

DISTRIBUTED FREE TO OVER 100,000 HOMES AND BUSINESSES IN TAMESIDE

citizen

IN THIS ISSUE:

Hawthorns School
P5

Proud Tameside
P20

What's On
P23



FOLLOW US ON FACEBOOK, X (TWITTER) AND INSTAGRAM



The future of the Citizen

Have your say!

The Citizen is Tameside Council's free magazine distributed to more than 100,000 households and businesses in Tameside three times a year.

It provides information for residents, including the latest news on council services and community developments, health guidance and advice, and a What's On guide for upcoming entertainment and events.

We're considering whether to stop, reduce or continue the magazine and would love your feedback. Is it something that you welcome and read, what content would you like to see more or less of, and would you support continuing the delivery of the magazine?

Please let us know by completing a short survey at:



tameside.gov.uk/tamesidemagazine

Alternatively, email us with your views on the Citizen at



citizensurvey@tameside.gov.uk

or you can fill out a form at any of our libraries. **The consultation will close on 9 May.**



Welcome to the spring edition of the Citizen

Spring is a time for investing in the future when we plant the seeds and toil to help them grow. In this edition of the Citizen, you can find out about how we're investing in Tameside to help the borough flourish: in our town centres and across our services.

Our plans for growth across Tameside are detailed on pages 10 to 12, including the work taking place to revamp the market places in Ashton and Hyde, how we're investing the UK Shared Prosperity Fund, and our other town centre developments.

Investing in our services includes key appointments in our Children's Services to drive forward our improvement journey, which you can find out more about on page 4, and developments such as the new SEND Parent Carer Forum, which is on page 5.

We are committed to providing support and helping people thrive wherever we can. Pages 8 and 9 feature the community support available from the

Household Support Fund that's helping people with cost-of-living pressures to new initiatives like AdviceAid that gives assistance on a full range of housing issues.

And with spring putting nature in our thoughts, it's only right to draw attention to what we're doing to protect the environment, on pages 14 to 16, including our investment in waste services and recycling, our enforcement action and expanding our Litter Hubs to keep Tameside safe and tidy, and our net zero initiatives for a greener, healthier future.

I hope you are able to enjoy springtime and are looking forward to fruitful months ahead.



Cllr Eleanor Wills
Tameside Council Executive Leader



Ricky Hatton supports Shop Local see the full story on page 13

Contents

- Children's Services improvements4
- Family Hubs4
- Tameside Umbrella Parent Forum5
- New funding for music6
- Spotlight on the team7
- Household Support Fund8
- Helping Hand support8
- Council Tax support9
- Pension Credit9
- Live Work Invest Prosperity10
- Ashton Developments11
- Droylsden Masterplan11
- WorkWell Tameside12
- Think Green Tameside14 - 16
- White Ribbon17
- Domestic Abuse17
- Break the Cycle18
- BE WELL Health Check18
- Nine Towns exhibition19
- Proud Tameside20
- Fostering21
- Adoptionnow22
- What's On23

Families invited to join the new Tameside Umbrella Parent Carer Forum



Parents and carers of children and young people with special educational needs and disabilities (SEND) are being encouraged to join the newly formed Tameside Umbrella Parent Carer Forum.

The group is made up of volunteer parent carer representatives from Tameside family support groups and provides a compassionate space for families.

The Forum is funded by the Department for Education (DfE) and is the strategic voice of local families for all parents and carers in the borough. They are solution-focused and work with local service providers to co-produce on key aims and objectives.

Their mission is to ensure that voices are heard, strong networks can be built amongst families, and to work collaboratively with local services to make a real difference for children and young people with additional needs or disabilities.

As the DfE funded parent carer forum, their role is to represent the interests and perspectives of families across Tameside. By sharing experiences and advocating for change, they work to influence local policies and improve services that impact children. As the Forum is run by parent carers, they understand the journey firsthand and aim to support and empower others.

The Parent Carer Forum is open to all parent carers with children or young people aged 0 to 25-years-old living in or receiving services from the area.



Tameside Umbrella Parent Carer Forum Launch Event

Whether you want to learn more, have questions, or simply connect with others on a similar journey, the group are actively inviting more families to join to build a strong and supportive community.

If you would like to find out more or to be added to the mailing list, please email enquiries.tamesidepcf@gmail.com, or you can find the group on Facebook at Tameside Umbrella Parent Carer Forum.

Ribbon cutting celebrates new school building that's already benefiting pupils



The ribbon cutting at Hawthorns Primary School

Parents have spoken of how much their children are benefiting from the state-of-the-art facilities at the new Hawthorns Primary School in Mottram.

The new building is a shining example of co-production with the community coming together to ensure its creation – and everyone involved gathered to celebrate at a ribbon-cutting ceremony.

Parents and carers shared how their children are enjoying the new school and the difference that it's making to them. Managed by New Bridge Multi-Academy Trust (MAT), it provides 246 places for children with SEND (Special Educational Needs and Disabilities).

The £23million development was commissioned by Tameside Council and built by Robertson Construction North West. Hawthorns School was originally designed to accommodate 60 pupils at its previous site, co-located with Aldwyn Primary School, Audenshaw, and the outstanding and popular school has outgrown its capacity.





New funding to support music education in local schools

Tameside has received new funding from Arts Council England to further support the music education for children and young people in the borough.

Tameside Council has been given a capital grant of £119,569 for 2024/26 for the purchase of musical instruments and equipment. Tameside Music Service has been granted £363,994 for 2024/25 to encourage inclusive practice, to continue to find ways to engage children who experience barriers to accessing music, and to engage other local cultural providers who can help to increase the diversity of the music offer across Tameside.

Tameside Music Service works with over 7,000 young people and adults across the borough.

The funding will also be used to support local children and young people progress in making music.

Through this education it will provide children and young people in Tameside with new and exciting opportunities to learn, perform, and develop their music skills.

For more information about Tameside Music Service visit

tamesidemusicservice.com



Children benefit from the world of books

Local families are being given the opportunity to benefit from a free book scheme to encourage young children to read from an early age.

The BookTrust Programme's Story Explorers is an exciting new initiative providing children between two and four-years-old with free books delivered to their home.

Tameside is one of the areas chosen to take part in the pilot scheme nationwide with the aim of giving children a good start to their reading experience.

150 families have been contacted to participate in the BookTrust Programme and will receive books every month for six months. There will also be an online hub with resources for parents and carers to support their children and develop their love of reading.

Reading together early in life helps nurture a love of books, stories and rhymes which gives access to the life-changing benefits of reading.

An evaluation will take place at the end of the pilot to monitor its success, with

the potential for it to expand, depending on the outcome.

Tameside's libraries offer a free membership for all residents, with books and activities for children of all ages. Find out more and locate your local library at tameside.gov.uk/libraries



Spotlight on the team



The power of Occupational Therapy

'The power of occupational therapy – transforming health and social care' was the theme for Occupational Therapy Week.

Occupational Therapists (OT) who work in Tameside Adult Social Care help people keep independent, safe and happy at home after major life changing experiences.

Incredibly, during 2024 the team have halved their waiting times for those accessing their support! They achieved this by prioritising early intervention and prevention alongside working collaboratively with other teams to provide holistic support.

The team was asked: "Why is Occupational Therapy powerful in social care?"

Occupational Therapist Elizabeth Anderson answered: "We are unique in the way we provide a holistic approach, helping people to stay independent, safe and happy in their homes."

Assistant OT Team Manager Moreblessing movingly said "Doctors add years to life, but Occupational Therapists add life to years."

Tameside Adult Services aim is for people to live well in the place they call home, where they are supported to be a part of their local communities to live long, healthy and fulfilled lives. The dedicated team make a huge difference to people's lives every day.

For more information, please visit tameside.gov.uk/adults



£2.2million boost to support Tameside's most vulnerable residents

Household Support Fund

I'm pleased the Government have extended the Household Support Fund to enable us to provide a lifeline for thousands of Tameside residents.

If you are struggling this winter, please contact us and we will support you.

Councillor Eleanor Wills
Tameside Council Leader



Tameside Metropolitan Borough
www.tameside.gov.uk/householdsupportfund

Tameside's most vulnerable residents have been supported through cost-of-living pressures with a £2.2million funding boost.

Tameside Council has used the borough's allocation from the Household Support Fund (HSF) to help low-income households.

Support has ranged from supermarket vouchers for families during school holidays to an open application scheme to apply for support.

The HSF has supported thousands of residents across the borough, including pensioners, children, carers, and disabled people, with food, energy and wider essentials.

The funding from the Government was split into seven programmes to spread it as widely as possible and reach those in need.

This included:

- Vouchers for school holidays for families and young people eligible for free school meals.
- Targeted support and direct awards for individuals, families and households including carers, care leavers and those with a disability to prevent crisis.
- Funding for Voluntary, Community, Faith and Social Enterprise (VCFSE) organisations to provide support over the colder months as well as funding to the foodbank and food pantry network and Tameside Community Food Skills Project.
- Advice provision via the Council's Welfare Rights and Debt Advice Service.
- Essential Household Items through the Tameside Resettlement Scheme.
- Support with housing costs to enable moves from temporary accommodation into secure housing.
- An Open Application Scheme to apply for help with the costs of food, energy and/or related essentials.

Visit tameside.gov.uk/householdsupportfund for more information. Helping Hand cost-of-living support information is also available 24/7 online at

tameside.gov.uk/helpinghand

 tameside.gov.uk/householdsupportfund

 tameside.gov.uk/helpinghand



Helping Hand support in Tameside

Support services in Tameside to help you manage the cost of living

If you're struggling with the cost of living Tameside Council's Helping Hand service connects you to local support. Whether you need help managing money, improving mental health, finding housing support, or accessing food banks, we're here for you.

Get advice on energy savings, financial support, and employment opportunities—all in one place. Everyone needs a helping hand sometimes, and support is available when you need it.

Visit our Helping Hand webpages to find local services ready to support you.

tameside.gov.uk/helpinghand



tameside.gov.uk/helpinghand

Council Tax Support made simpler and easier

Tameside Council is implementing a new income-banded council tax support scheme for working age claimants, with an easier and faster assessment process that will speed up the time it takes to reduce council tax bills and provide more financial stability for residents.

The former scheme was complex and time-consuming to administer, delaying support for residents and recalculating entitlement throughout the year based on even the smallest changes in income. Under the new scheme the amount of council tax support awarded will only change if an increase or reduction moves overall income into a different band.

Importantly, the new scheme provides the same maximum level of support to the lowest income households, and supports families, vulnerable people and war pensioners.

More than 96% of current claimants will either see no change in entitlement or benefit from an increase. Around 3% are likely to get less under the new scheme, however these claimants will be individually contacted to advise them of the change and explain the transitional support available to them.

Residents support this new approach as an extensive public consultation resulted in the majority of responses agreeing with the proposed changes.

For more information visit tameside.gov.uk/ctax/counciltaxsupport

Council Tax Support Scheme

- A new cost-neutral, income-banded scheme.
- Simpler, faster process for claimants.
- Avoids multiple requests for information and constant changes in entitlement.
- Reduces administration costs.

tameside.gov.uk/ctax/counciltaxsupport

Don't forget to check if you're eligible for Pension Credit!

Lots of residents who may be eligible for Pension Credit aren't claiming, so if you or someone you know are over State Pension age it's worth checking.

In 2024, our Pension Credit Roadshow delivered by Welfare Rights supported eligible residents to access an additional £326,000 of annual benefits.

Pension Credit is a government benefit which provides extra money for those over State Pension age with a low income. Those who are eligible may also receive other help such as – Winter Fuel Payment, help with heating costs, Housing Benefit and Council Tax Support, free TV Licence for those aged 75 or over and help with NHS dental treatment, glasses and hospital transport costs.

Welfare Rights weekly drop-in at Ashton Library every Thursday between 10am and 12noon. You can also find out more about Pension Credit by contacting:

Independent Age - independentage.org or call 0800 319 6789

Citizen's Advice - tamesidecab.org.uk or call 0808 278 7805

Age UK Tameside - ageuk.org.uk/tameside or call 0161 308 5000

Welfare Rights - tameside.gov.uk/welfarerights or call the freephone advice line 0800 074 9985 (Monday and Wednesday between 9.30am and 12.30pm)

If you look after someone, come along to a coffee morning at The Carers Centre at The People Place (OL6 6BH) on the last Tuesday of every month between 10am-12noon, where you can speak to Welfare Rights and Carers Centre Wellbeing Advisors to explore other support.



AdviceAid



New Online Housing Portal should be First Port of Call

Advice on the full range of housing issues is now available 24 hours a day thanks to a new online portal available through Tameside Council's website.

AdviceAid is a self-service tool which offers people information in plain English that is tailored to their specific situation.

The list includes rent or mortgage arrears, rights when homeless, domestic violence, harassment, and where to find help if facing eviction.

It can be accessed through the homelessness and housing advice section of the council's website:

tameside.gov.uk/housing/advice.

It's the first port of call for anyone facing homelessness or needing assistance with housing matters. If you don't have a PC, online access is available at any Tameside Library where the fully trained staff will be happy to help.

**LIVE
WORK
INVEST**

IN TAMESIDE

TAMESIDE UK SHARED PROSPERITY FUND CONTINUES TO BRING SUCCESSFUL RESULTS

Over the last eighteen months, the UK Shared Prosperity Fund (UKSPF) has delivered brilliant results across Tameside, exceeding expectations in a number of key areas and creating a lasting positive impact for the borough's residents and businesses.

The £3.812 million allocated to Tameside has been effectively spent across three investment priorities:



- £1.979m for Communities & Place
- £1.215m for Supporting Local Business
- £0.618m for People & Skills

With funding on track to be spent, there is a range of impressive achievements that highlight the program's success. A number of targets set have not just been met but have been exceeded:



- 1,787 square metres of commercial space has been improved
- Over 250,000 square metres of pedestrian pathways have been enhanced
- Over 270 local events and activities have been supported
- More than 690 socially excluded individuals have been assisted

The fund's impact extends to broader outcomes, and has been driving growth creating key jobs, engaging the community, and highlighting growth in community engagement, encouraging economic development.



- 64 Full-Time jobs have been created
- 193 Community-led Arts, Cultural, Heritage, and Creative Programmes have been supported
- Footfall has been increased across town centre attracting and engaging 907,366 visitors through events
- 310 volunteer opportunities and roles established, exceeding the target set

Ashton Market Hall is also being upgraded using £250,000 of UKSPF funding in line with ambitions for the Market Square. Works will change some of the layout to support existing traders and bring in a wider age range of customers by offering an improved food and beverage area.

Improvements to Hyde Market Ground identified through the Hyde Town Centre Masterplan are also now complete, following discussions with market traders some of the fixed market stalls have been replaced with a more flexible parasol provision.

Cultural initiatives such as Stalybridge Street Fest have enriched community life, while improvements to playgrounds and paving have refreshed parks, greenspaces, and town centres.

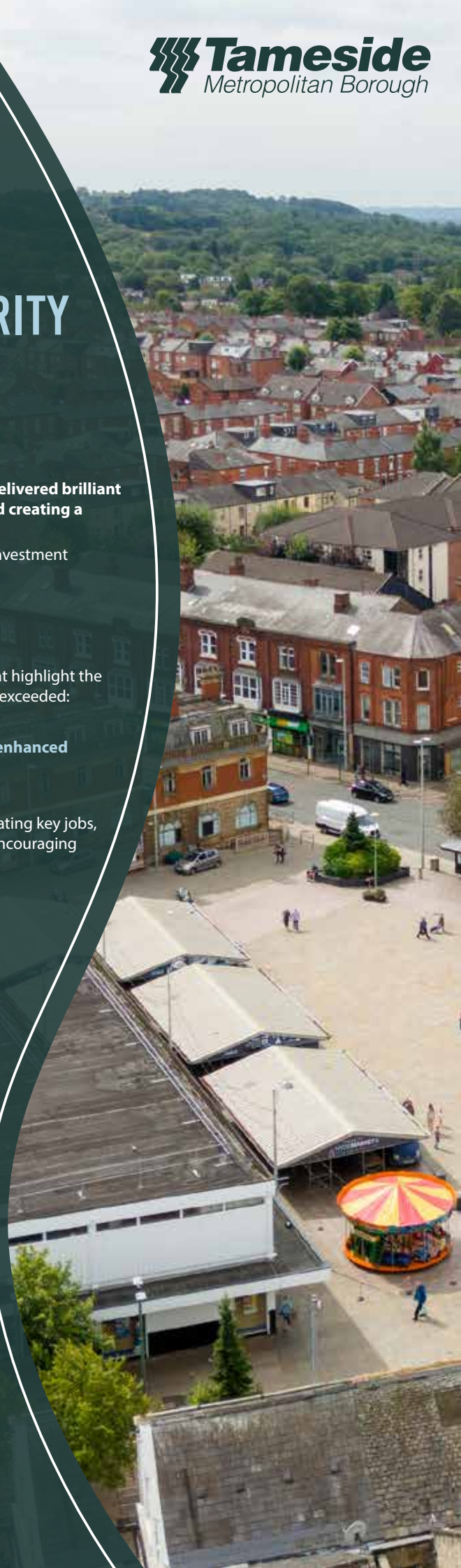
For more information about ongoing UKSPF projects in Tameside, visit [tameside.gov.uk/UKSPF](https://www.tameside.gov.uk/UKSPF)

www.tameside.gov.uk/UKSPF



Funded by
UK Government

**GREATER
MANCHESTER**
DOING THINGS DIFFERENTLY



EXCITING DEVELOPMENTS AT ASHTON MARKET SQUARE

Exciting developments are underway in Ashton Market Square as part of its transformation, funded by the Government, to revitalise the town centre and provide support for local businesses and residents.

The existing market stalls have been removed, and the outdoor market has now been temporarily relocated to Fletcher Square until the works are completed and will operate on Tuesdays and Saturdays. Significant progress has already been made by the Council's engineering teams, including paving works in the square.

In the coming weeks, contractors Casey's will begin constructing the new canopy area, ensuring the transformation moves forward smoothly for the relaunch of the revitalised market early next year.

This transformation of both the outdoor and indoor market is a vital step in the regeneration of Ashton town centre. It will enhance the town's ability to host community events, provide an improved market offering, and attract further investment to make Tameside an even better place to live, work, and visit.

The Council is committed to minimising the inevitable disruption for businesses, traders, and visitors as well as offering them support during this period and encouraging everyone to continue shopping and visiting the town centre while the work progresses.

There was a range of programmed events leading up to and during the Christmas period aimed to support traders and businesses and generate additional footfall, this will continue where possible and the market events like record fairs will take place as usual in Fletcher Square and the Sunday outdoor market which is currently paused will relaunch in April at Old Cross Street Car Park.

To make it easier for visitors to access the town, free parking remains available all day on Saturdays and Sundays at Union Street, with reduced parking charges at Old Cross Street and Church Street 1 throughout the week. For updates on the project, please visit:

tameside.gov.uk/ashtontowncentre

DROYLSDEN TOWN CENTRE MASTERPLAN

The Droylsden Town Centre Masterplan, commissioned in 2024 and led by OPEN with Cushman & Wakefield, WSP, and Social, is progressing.

Following public consultation in October 2024, final recommendations are being prepared for Executive Cabinet approval. A key proposal includes a detailed study of the retail core, including the Concord Suite, to assess development options—Cushman & Wakefield will complete this by April 2025. Funded by £100,000 from Homes England and GMCA's Evergreen fund, the masterplan outlines short, medium, and long-term interventions over 10–15 years to support regeneration. Learn more:

tameside.gov.uk/droylsdentowncentre





WORKWELL TAMESIDE

NEW service to support residents to be in work

WorkWell helps Tameside residents who are struggling with their health while working, have recently lost their job, or need support with health, skills, or finding work to get back on track.

The friendly team can offer a range of tailored support which can help residents identify and understand their current barriers to starting and succeeding in work and support them to draw up a plan to overcome challenges.

This support could include advice on workplace adjustments, such as flexible working or adaptive technology, facilitating conversations with employers on health needs, and providing access to local services.

Tameside residents are eligible for support if they are currently employed and struggling to manage in work or have recently become unemployed due to a health condition.

More information and a WorkWell referral form can be found at tameside.gov.uk/WorkWell or by visiting one of the drop-in sessions around the borough or calling the team on 0161 342 3111.

**As many buses
as you need
within an hour.**

Just £2.

Miles better value
with hopper.
Available now.

 **BEE NETWORK**



Best performing council in North West for taking action over flytipping

Tameside is the best performing council in the North West for investigating and taking enforcement action against flytipping.

Latest figures, published by DEFRA (Department for Environment, Food & Rural Affairs), show that in 2023/24 Tameside Council issued 236 fixed penalty notices for flytipping – more than anywhere else in the North West.

The council issued 279 fixed penalty notices in total for all waste offences including flytipping, littering and household duty of care – this is the second highest figure in Greater Manchester and the third highest in the North West.

At the same time, flytipping incidents in the borough reduced 34% from 4,416 in 2022/23 to 2,905 in 2023/24.

Tameside Council has waste enforcement and street cleaning officers out every day investigating and clearing flytipping and also holds regular days of action, as part of its Our Streets campaign to work with the community to help make the borough cleaner and safer.

For further information on reporting flytipping and useful information to provide to help investigations see

tameside.gov.uk/flytipping



Waste enforcement officers clearing flytipping and checking it for evidence on a recent Our Streets day of action

Pride of Tameside Business Awards returns for 2025

The prestigious Pride of Tameside Business Awards are back for 2025, celebrating the achievements and hard work of our fantastic local businesses.

Nominations will open in the coming weeks, with full details of this year's award categories announced soon. Businesses will have the opportunity to nominate themselves and be recognised for their contributions to the local economy.

The Awards Ceremony will take place on Thursday 12 June 2025. Stay tuned for updates on how to submit nominations and get involved! For more information, visit prideoftamesideawards.co.uk



message packs a punch!



Ricky Hatton supporting shop local.

Ricky Hatton has shared a message that should hit the spot for independent traders.

The former world champion boxer has backed Tameside Council's campaign to encourage people to shop local and support local town centres. And to drive home the message, he wheeled out his Trotters Independent Trading Robin Reliant van - his treasured showbiz memorabilia from the hit 80's and 90's TV show Only Fools and Horses.

Ricky who grew up in Hattersley and lives in Gee Cross said: "I'm very proud of coming from Tameside and want to see our local towns and businesses thrive. Please everyone, get behind supporting Tameside independent traders and shop local."





You can now recycle plastic pots, tubs and trays

Tameside residents can now recycle household plastics like pots, tubs and trays in their black recycling bin along with plastic bottles.

The move follows upgrades to Greater Manchester's recycling facilities.

Clean plastic items that can now be recycled include:

- Plastic pots (e.g. yoghurt, soup, cosmetics etc)
- Plastic tubs (e.g. margarine, laundry powder, chocolates etc)
- Plastic trays including black plastic trays (e.g. raw and cooked meat, fruit and veg punnets etc)

Plastic films like crisp packets, bread bags, pet food pouches and carrier bags, still cannot be recycled in your recycling bin. However, Recycle for Greater Manchester

recycleforgreatermanchester.com are planning to collect these types of plastic for recycling in the near future and will keep residents updated.

Hard plastics like garden furniture or children's toys can be taken to your local household waste recycling centre. For further information see

tameside.gov.uk/recycling



What goes in each bin?

	Non recyclable waste 	Plastic bags 	Dog waste and nappies 		Aerosol cans 	Plastic bottles 	Glass bottles and jars 	Aluminium foil 	Cans and tins 	Plastic food trays & yoghurt pots 	
	Newspaper and magazines 	Paper 	Cardboard 	Junk mail 		Plants, leaves and small twigs 	Grass cuttings 	Uncooked and cooked food 			

More bin trucks and crews agreed for Tameside

Nearly £2m investment including more trucks and crews has been agreed to further improve Tameside's waste and recycling service.

The aim is to achieve more efficient and completed rounds, providing a further improved and reliable service for residents.

Tameside's waste collection service empties nearly 11 million bins every year and is performing well when benchmarked against other comparable local authorities.

But with increases in the number of homes in the borough, national waste policy changes and the requirement to collect additional waste streams, there are further challenges ahead which need the additional investment.

The service improvements will also include the use of in-cab technology and the roll out of food waste recycling collections to rural homes and flats that don't currently have them by April 2026.

Fresh new look for Dukinfield Crematorium Chapel



Executive Leader Cllr Eleanor Wills, Executive Member Cllr Laura Boyle, ward members, Interim Chief Executive Harry Catherall and bereavement services staff inside the new look chapel.

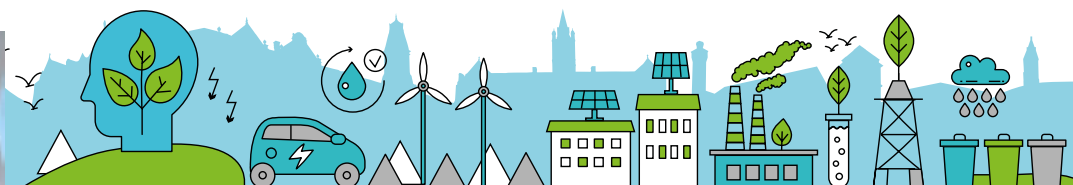
New equipment has been installed at Dukinfield Crematorium as part of a wider refurbishment.

The upgrade has included new media equipment, including speakers and touch screen displays, new pews and chairs with matching cushions, a revamped canopy and curtains, new ambient lighting and

professional floral displays along the walls of the chapel.

There are also three new, more environmentally friendly cremators, which do not pollute the atmosphere and will be fit to serve the borough for the next 20 to 25 years. For further information see

tameside.gov.uk/bereavement



tameside.gov.uk/recycling

Protecting our local communities

Enforcement officers have been working hard to help keep Tameside clean and safe by dealing with over 10,000 public protection investigations and requests during 2024.

The activity, carried out by the council's public protection teams, has included 16 prosecutions against people who have illegally dumped waste in the borough and 345 Fixed Penalty Notice issued by the waste enforcement team for waste related offences.

Trading Standards worked on 14 prosecutions, investigated 101 scams and 19 under age sales and seized 7953 illegal e-cigarettes, over 200,000 illegal cigarettes and over 43kg of illegal hand rolling tobacco. Trade in illicit tobacco, cigrattes and e cigarettes supports crime rings, damages legitimate businesses, undermines public health and facilitates the supply of tobacco to young people.

They also carried out 153 food standards inspections, actioned 591 requests for service and completed 71 Buy With Confidence checks.

Environmental health officers were also busy, carrying out 955 food hygiene and health and safety inspections and following up 1649 complaints and requests for service.

Other areas covered in the figures include housing standards, licensing, environmental protection, health and safety enforcement and food safety and standards.

The council has officers out every day working with businesses and residents to make Tameside safer and cleaner these figures showcase the breadth and vast scale of this public protection activity.

Enforcement work – particularly in relation in clearing flytipping and litter – comes at a significant cost to public funds. Everyone has a responsibility to take pride in neighbourhoods and keep them clean and tidy.

Thank you to everyone who works with the council to protect the local community and environment.

To report any issues to the enforcement teams see tameside.gov.uk/ReportIt

OUR STREETS

Working together for a cleaner and safer Tameside



Public Protection Enforcement Activity 2024

Food Safety / Standards

Export Certificates issued	339
Imported food checks	108
Hygiene Improvement Notices	11
Voluntary Closures	5
Warning Letters Issued	442

Health and Safety

Prohibition Notices	11
---------------------	----

Trading Standards

Scams	101
Buy with Confidence members	71
Prosecutions – Trading Standards	14
Underage Sales Seizures (tobacco and vapes)	19
Illegal e-cigarettes seized	7,953
Illegal cigarettes seized and 43.7Kg of illegal hand rolling tobacco seized	200,260

Inspections and Requests for Service (Environmental Health)

Food Hygiene inspections (Environmental Health)	955
Complaints and Requests for Service. Including: RIDDOR Notifications Animal Welfare, Food complaints, Premise Hygiene, Disease notifications, Allergen complaints, Food Export / import	1649

Inspections and Requests for Service (Trading Standards)

Food Standards Inspections	153
Complaints and Requests for Service. Including: Underage Sales complaints, Animal Welfare, Consumer Direct complaints, Doorstep Sales complaints, Fair Trading complaints, Allergens, Metrology complaints	591

Waste Enforcement

Fly Tipping Prosecutions	16
Fixed Penalty Notices	345

Environmental Enforcement

Service Requests	330
Accumulation of Refuse	330
Warnings letter issued for Accumulations	66
Notices issued for Accumulations (S.4 PDDPA 1949 & S.80 EPA 1990)	42
General Advice	130
Anti-Social Behaviour in Street	4
Asbestos - Advice Sought / Given	3
Dog Fouling	62
Domestic Noise	96
General Rubbish Complaints	13
Health & Safety Complaint (general)	33
Illegal Tipping	1981
Waste Bin Contamination	60
Waste Duty of Care Advisory	28

Environmental Protection

Service Requests: Air/Dust/Smoke	130
Service Requests: Contaminated Land	609
Planning Application	609
Service Requests: Noise/Dog/Alarm/Miscellaneous	667
Service Requests: Odour	31
Planning Application Service	388
Service Requests: (Air Quality, Noise, Light etc.)	15
Abatement Notices Served for Statutory Nuisance	15
Warning Letters Issued	28

Housing Standards

Housing Standards Service Requests	440
Homes for Ukraine Inspections	19
HMO Inspections (in relation to new licences, re-licences and complaints)	133





Tameside takes another step on net zero journey



The speakers at Tameside Net Zero Festival, from left, Chris Taylor; Lily, Oliver and Aldin from Tameside Youth Council; Emily Wood; and Amelia Bayliss.

Tameside has taken a significant step within Greater Manchester's 14-year journey to becoming a carbon-neutral region by 2038.

More than 70 guests participated in the Tameside Net Zero Festival where the council's economy, employment and skills team brought together a wide range of stakeholders at The Vale, home of Mossley arts organisation Global Grooves.

Industries and businesses showcased their green projects and what they are doing to reduce their carbon footprint, there was advice from green experts, and members of Tameside Youth Council offered a young person's perspective on the need to slash carbon emissions across the borough.

Among the organisations taking part were GM Business Growth Hub's Green Economy Team, Enerlytic, the Carbon Literacy Project, Carbon Energy and Reduction Solutions, Project Solar UK, Mosodi, Gwafupegan, Manchester Bikes and MIC media.

The festival was sponsored by Dukinfield-based MBH Global, which provides data security, asset recovery and shredding services – keeping data safe while preserving the planet.

If you would like your business to get involved in the journey to net zero, or are looking to play your part in making positive changes, email tamesidemeansbusiness@tameside.gov.uk

Mayor launches Tameside's latest Litter Hubs

The "Keep Tameside Tidy" message continues to spread across Tameside.

Two more Litter Hubs have opened in Ashton – one in St Michael's ward and the other in St Peter's.

A day of action, part of the Our Streets campaign, launched the new additions with the Civic Mayor of Tameside, Cllr Betty Affleck, and her consort, Mr Declan Fitzpatrick, involved.

Since Litter Hubs were first launched four years ago, the network has more than trebled in size. The hubs make it quick and simple to organise community clean-ups using free equipment.

To find out more about Litter Hubs and how you can get involved and be a Litter Hub champion visit tameside.gov.uk/litterhubs



IT STARTS WITH MEN 

KICKSTARTING A CHANGE IN BEHAVIOUR TOWARDS WOMEN AND GIRLS

Local sports groups, pubs and schools have worked with Tameside Council to raise awareness of the White Ribbon campaign and help reduce violence against women and girls.

The theme for White Ribbon Day was #ItStartsWithMen and it focused on challenging violent and harassing behaviours of males and encouraging men and boys to hold each other to account and become allies to women and girls.



The council worked with local martial arts groups, gyms and schools to help spread awareness of the White Ribbon campaign.

Bridges Partnership, Tameside's specialist domestic abuse support service, also held a stall at Curzon Ashton football stadium to promote the work of the campaign with local fans.

Council licensing officers distributed White Ribbon posters and beer mats to local pubs and clubs to help raise awareness.

Tameside's support for the campaign was showcased nationally by White Ribbon UK.

Find out more about the campaign, become a White Ribbon ambassador or champion or make the White Ribbon promise visit whiteribbon.org.uk

#ItStartsWithMen

www.whiteribbon.org.uk

THEATRE PRODUCTION CHALLENGES VIOLENCE AGAINST WOMEN AND GIRLS TOURS SCHOOLS

An impactful theatre production is circulating schools in Tameside to help shine a light on and challenge violence against women and girls (VAWG).

The production 'Blind Side' by Breaking Barriers, commissioned by Tameside Council's Community Safety Team, is revisiting primary and secondary schools to help target and educate a younger audience.

The workshop includes a 20-minute performance, followed by a facilitated open discussion designed to allow young people to explore different forms of VAWG, and where to go for support.

A pre-film is shown to the young people in their classrooms, to support the production and introduce them to VAWG topics. It allows them to discuss their thoughts and feelings on the key themes, in a comfortable environment.

The additional focuses of the project are providing young people with the confidence and knowledge to challenge harmful behaviours and attitudes and develop knowledge of how they can support peers who may face these issues.

For more information on support, visit bridgespartnership.org.uk



The Blind Side tour.



Chf Supt Chris Foster, Exec Member Cllr Stephen Homer and Community Safety Partnership Team Leader John Walker in the CCTV control room.

CCTV team helping to keep Tameside safe

Tameside Council's CCTV team is having a significant impact in tackling crime and disorder and helping to keep local communities safe.

The network has more than 300 cameras monitoring town centres, parks, public spaces and council buildings.

In one month alone, officers gave information to police that led to 17 arrests, they located five missing from home people and they flagged four drink driving offences.

During 2024 they provided information to the police that led to 52 arrests and helped to locate 27 people who were vulnerable.

Weekly liaison between the CCTV Control Room and the Council's Community Safety Team has been introduced to submit intelligence to police that would otherwise be lost. This includes information on drug activity, off-road bike locations, and individuals involved in serious organised crime.

The team has recently been praised by Greater Manchester Police's Serious and Organised Crime Group for providing CCTV footage that has been instrumental in arresting and prosecuting offenders.

tameside.gov.uk/cctv

Are you concerned about your behaviour in relationships?



(L to R) TLC Domestic Abuse Prevent Worker Emma Jones, Executive Member for Public Health Cllr Sharif and Domestic Abuse Strategic Manager Lisa Morris

People who show harmful behaviours in their relationships are being urged to get help in a new campaign aimed at reducing domestic abuse and supporting families.

In 2023/24 there were 3692 domestic abuse suspects from Tameside reported to Greater Manchester Police – of these 673 were repeat suspects.

Tameside Council is working with partners to help people to break the cycle of harmful behaviours and help build safer, stronger and happier home environments.

The support, commissioned by the council and provided by Talk Listen Change, can help people build better relationships with their families, where everyone will benefit including any children they have.

People can self refer onto the programme or they can be referred by a professional working with them such as a GP or social worker.

An unhealthy behaviour is a direct action that intimidates your partner or another family member and makes them feel scared or anxious. It could be hitting, kicking, shouting, criticising them, or subjecting them to emotional or financial abuse. It could be preventing them from seeing friends or family or controlling what they wear or where they go.

The programme has successfully reduced physical and emotionally abusive behaviours in most people who have completed it. For more information and to get support see bridgespartnership.org.uk/breakthecycle

BE WELL TAMESIDE

SUCCESSFUL HEALTHY HEART CHECKS HELPS TAMESIDE WORKERS STAY WELL

Healthy Heart checks were offered in workplaces across Tameside to tackle the number of workers suffering from heart attacks and strokes.

Around 1 in 3 people who have a heart attack and 1 in 4 who have strokes are of working age.

Tameside Council successfully secured government funding to deliver a pilot scheme aimed at detecting the early signs of cardiovascular disease (CVD) in the local workforce. As a result, Be Well Tameside provided free Healthy Heart Checks in workplaces from October 2024 until 31 March 2025.

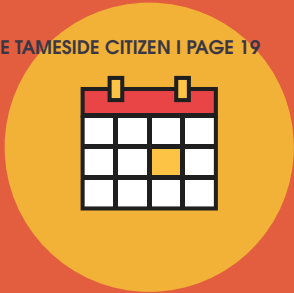
Workplaces were encouraged to arrange the free checks for their staff.

The Healthy Heart Check was a free check-up of a person's overall heart health, delivered by trained Be Well Tameside staff. It was available for workers aged 25 and over who had no long-term conditions connected to their heart.

Each check took around 20-30 minutes, with results given and discussed during the appointment. Tests included blood pressure, Body Mass Index (BMI), blood glucose levels, cholesterol levels, and a risk score for CVD.

The initiative was a valuable opportunity for employers, helping them support the health and wellbeing of their workforce. It also benefited residents working in Tameside by providing a quick and free assessment of their heart health. By identifying early signs of cardiovascular disease, the scheme encouraged individuals to make positive lifestyle changes and take preventative steps towards leading healthier, more active lives.





New Nine Towns Exhibition opens at Portland Basin Museum

The year was 1974. It was famous for flares, platform shoes, kung fu, the start of Roller-mania, and the founding of the Metropolitan Borough of Tameside.

To celebrate the authority's 50th anniversary, Portland Basin Museum, Ashton, is hosting a new exhibition called "The Nine Towns of Tameside" which examines the unique character of each of the borough's nine constituent parts while also taking a look at the decade in which the borough was born.

It focuses on notable buildings and landmarks, reveals some quirky and unusual facts, and explains how Tameside's towns, villages and predecessor authorities got their names and what their coats of arms represent.

You can also find out about famous people associated with the borough as well as some of the local movers and shakers throughout history.

Among these items is an opening-ceremony jacket for the recent Paris Olympics loaned by Ashton diver Anthony Harding, who won a bronze medal in the synchronised 3m springboard.

In terms of the 1970s, the exhibition invites you to check out a funky array of fashions, toys and technology including the famous Atari games console.

"The Nine Towns of Tameside" runs until July. Admission is free.



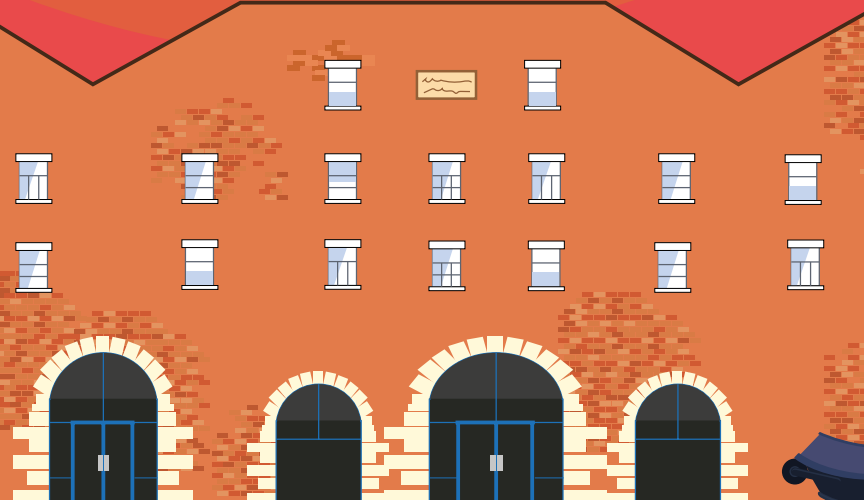
Cllr Leanne Feeley at "The Nine Towns of Tameside" exhibition.



The exhibition examines the unique character of each of the borough's nine constituent parts.



Cllr Leanne Feeley at "The Nine Towns of Tameside" exhibition.





The latest group of engineering services apprentices.

ProudTameside

Apprentices set out on the Road to Success

The road to the future is most certainly paved with the highest of aspirations as Tameside Council's latest group of engineering services apprentices – eight mason paviours and three civil engineers – set their sights on a successful local authority career.

All 10 say that what attracted them to joining Tameside was the excellent on-the-job training they could expect, and the possibility of working their way up to supervisor or assistant engineer.

Among the paviours, Evan Gorton said he was impressed by the progression route. Others were drawn not only by the prospect of a stable job with a stable income, but also the quality of training and provision of protective equipment.

All were keen to work outdoors as part of a highly-motivated team.

Comments from the apprentice civil engineers included Obie Norry: "So far I've most enjoyed seeing what happens behind the scenes and how much planning and effort goes into each scheme."

Jacob Sallabank: "I like what Tameside Council stands for in that they care about their community and want to make a change. It's nice to see those changes come to life and how they benefit everyone and improve living standards."

Henry Catherall: "Engineering has always interested me. When I heard about the apprenticeship I had to apply because it was the perfect opportunity."

The five first-year mason paviours and two second-years, whose ages range from 16 to 25, are about to start a level two qualification in highway

maintenance, covering health and safety, paving, kerbing, and tarmacing.

Three new civil engineers, all teenagers, will be taking on a range of duties across their three-year apprenticeship, including highway design and maintenance, and street lighting.

Apprentice Mason Paviours First-years: James Chadwick, 16, Manchester; Evan Gorton, 16, Stalybridge; Ayden Hughes, 21, Stockport; Cole Rodgers, 17, Hyde; Cameron Theaker, 19, Dukinfield. Second-years: Cameron Jones, 25, Hyde; Charlie Moorby – 21, Dukinfield.

Apprentice Civil Engineers: Henry Catherall, 16, Stalybridge; Obie Norry, 16, Dukinfield; Jacob Sallabank, 18, Hollingworth.

tameside.gov.uk/jobs/apprenticeships

Government salutes Tameside's Defence-support work

Tameside Council has once again retained its Defence Employer Scheme gold award – an honour it has held since 2019.

The scheme, which is operated by the Government, encourages employers to support defence and inspire others to do the same. Tameside takes part under the terms of the Armed Forces Covenant, which it signed in 2012, and through its work with the Tameside Armed Services Community.

Gold award-winners have to show they are forces-friendly in terms of their recruitment and selection processes, ensure their workforce is aware of their positive policies towards defence

people issues, encourage a positive environment for reservists and support the cadet movement.

Tameside Council salutes the services every June when it hosts an Armed Forces Day celebration in Victoria Park, Denton.

The Duke of Lancaster's Regiment and the Mercian Regiment both hold the freedom of the borough, which entitles them to march through Tameside with bands playing, drums beating and colours flying.

tameside.gov.uk/armedforces





COULD YOU BECOME PART OF OUR FOSTERING COMMUNITY?

Celebrating Tameside's longest serving foster carers

Foster carers Sue and Pete Williams, 72 and 81, from Hyde are Tameside Council's longest serving foster carers, having fostered local children and young people for 44 years and counting.

Tameside Council are looking for more people to come forward and become foster carers to provide stable and loving homes for vulnerable local children. The council provides foster carers with full training, support and an allowance.

Sue and Pete both worked full-time alongside fostering. Fostering was flexible enough to fit with both of their lifestyles.

Sue said: "I always knew I wanted to foster, I was an only child myself, but my childhood was so great that I wanted to have a big family to make sure my children and the children we care for had the same."

Pete said: "Our first placement – a boy - was challenging as it was a new experience, and we also had our biological son living with us at the time.

"But we had a lot of laughs with him and we built up such a solid relationship that at the age of 18 years old he decided to change his surname to ours, Williams. We still keep in touch with him now, as we do with many of them."

Sue and Pete have made a long-lasting impression on a number of foster children.

Pete added to this by saying: "Fostering has become our way of life, we don't see a child as a foster child when they come to our home, we see them as an addition to our family."

Pete summed their journey up perfectly by saying: "It's not been without its challenges, but we've overcome them, and it's been well worth it.

"Over 44 years we've got thousands of amazing memories and only a handful of bad ones."

Anyone can foster so long as applicants are 21 years or older, have a spare room and can offer a safe and loving home.

Fostering can be flexible as there are various fostering opportunities to suit different schedules and lifestyles.

Any residents that have been inspired to enquire by Sue and Pete's story please get in touch by calling 0300 303 0321 or email enquire@fosterforgm.com or visit

tameside.gov.uk/fostering

where you can see our upcoming 'Let's talk fostering' stalls.



tameside.gov.uk/fostering

ENQUIRE NOW:  0300 303 0321

 ENQUIRE@FOSTERFORGM.COM



Supporting adoption journeys

A supportive community is available to help Tameside residents who are considering adopting local children in need of families.

Taking those first steps towards starting or growing your family can be daunting and it's the same when doing so through adoption. People might feel nervous, anxious, or even worried that they'll ask a silly question, but they don't need to be because there's support every step of the way.

Now more than ever, as the number of children in need of adoption outweighs the number of families coming forward to adopt, we urgently need people to consider opening their hearts and homes to a child or children that need them.

Adoption Now, the dedicated adoption service for Tameside, has experienced and supportive staff to guide adopters through the process and support them from that first call to a child joining their family and beyond. There's also a strong community of adoptive families and their pioneering 'Mentor Scheme' to guide adopters.

If you're considering adoption or are already on your journey, visit adoptionnow.org.uk or call 01204 336096 to learn more and get in touch with their Welcome Team.

What's On IN TAMESIDE

Armed Forces Day

On Saturday, 28 June, join us in Victoria Park, Denton (1 to 4pm) The public event will be launched at 1pm by the Civic Mayor, and the bandstand will host a programme of entertainment including live music and dancing. There will also be a range of activities for children and adults alike, including climbing walls, inflatable axe-throwing, face-painting, arts and crafts, and more!

Exhibitions

Ashton Market Hall Gallery - Regular exhibitions by artists from the Tameside area.

Tape Letters - Cassette tape conversations with friends and family back home recorded by Ashton's British-Pakistani community in the Sixties, Seventies and Eighties. **Ashton Library.**

The Nine Towns of Tameside - Exhibition looking at the formation of Tameside 50 years ago, examining the unique character of its towns and villages, local landmarks, and offering up some quirky facts. **Portland Basin Museum, Ashton. Closes 6 July.**

Events

Book Trust Story Time - Free story and craft sessions. Check times and places at your local library.

Free Business Networking and Drop-in - A relaxed space for you to network, exchange ideas and find support for your business. **Last Thursday of the month, 4 to 7pm, at Ashton Library.**

Build a Business 1-2-1 - Our SME champion is available at Ashton Library every Thursday morning and on the first Tuesday evening of every month for a chat. **For an appointment call in or visit tamesidelibraries.eventbrite.co.uk**

Digital Skills Support for the Over-65s - Free training sessions run by AbilityNet to boost your skills with mobile phones, laptops, computers and tablets. Call 0800 048 7642 to book or just drop in. **Every Tuesday, 11am to noon, at Stalybridge Library, Trinity Street.**

DJ Sessions - Free weekly DJ workshops for people 18 to 25 every Friday at the 4C Community Centre, Ashton (12.30 to 2.30pm). **Call 07943 820 153 or 0161 806 0879 or email projects@reformradio.co.uk**

Droylsden Library Club - Fun and friendly talks and workshops on a range of topics. **10.30 to 11.30am at Droylsden Library on the first Wednesday of each month.**

Dukinfield Library Club - Fun and friendly talks and workshops on a range of topics. **10.30 to 11.30am at Dukinfield Library on the second Wednesday of each month.**

Exploring Stalybridge - New three-part podcast to help people connect with nature. **<https://anchor.fm/operation-farm>**

Family History Help Desks - Every Tuesday, Wednesday, Thursday and Saturday, 10am to 1pm. **Tameside Local Studies and Archives Centre, Cotton Street, Ashton, OL6 7BY. Call 0161 342 4242 for more details.**

Family Hubs - Tameside has four family hubs which all have a great Start for Life offer at their core.

- East: Ridge Hill Children's Centre, School Crescent, Stalybridge - 0161 342 5533.

- North: St Peter's Children's Centre, Trafalgar Square, Ashton - 0161 342 2255.

- South: Flowery Field Children's Centre, Old Road, Hyde - 0161 342 5353.

- West: Greenside Children's Centre, Greenside Lane, Droylsden - 0161 342 5197.

Family Hubs are a one-stop shop offering early support to families and young people. **For more details visit www.gotogrowtameside.co.uk and www.tameside.gov.uk/familyhubs**

Get Started with iDEA - iDEA offers free online courses to improve your digital skills. **Every Thursday (3.30 to 4.30pm) at Ashton Library, Market Place - 0161 342 2029.**

Get Started with Learn my Way - Learn my Way Courses are free and simple courses for beginners. **Every Tuesday (11am to noon) at Ashton Library, Market Place - 0161 342 2029.**

Get Started with Online Job Searching - Come along to our free workshop. **Every Wednesday (11am to noon) at Ashton Library, Market Place - 0161 342 2029.**

Glorious Gorse Hall - Calming heritage and nature audio walk for families visit **www.2baap.co.uk/glorious-gorse-hall**

I Made It! - Adult Art Class - Led by crafts maker Juliette Hamilton you'll be introduced to the world of willow weaving. **Booking essential. Tickets £60 from www.ticketsource.co.uk**

Knitting and Stitching Group - Every Friday 1.30 to 3.30pm at Droylsden Library, Guardsman Tony Downes House, Manchester Road - 0161 342 5700.

Lego Clubs - Children aged seven and over. **First Wednesday of each month at Stalybridge Library, Trinity Street, 3.30 to 4.30pm, and the last Tuesday of each month at Ashton Library, Market Place, 4 to 5pm.**

Library Readers' Groups - Friendly and informal discussions about a different novel every month. **For more details, ask at your local library.**

Story Makers - Fun sessions led by Simon the Storyteller for children aged four and under. **Tuesdays: Hattersley Library (10 to 10.45am) and Mossley Library (1.30 to 2.15pm). Wednesdays: Zoom (10 to 10.30am) and Droylsden (1.30 to 2.15pm). For more information email book.start@tameside.gov.uk or call 0161 342 3443.**

Tameside Heritage Quiz - Tameside Local Studies and Archives Centre, Cotton Street, Ashton, at 2pm on the last Wednesday of every month. **0161 342 4242.**

Tameside History Club - 2pm at Tameside Local Studies and Archives Centre, Cotton Street, Ashton, and via Teams. **To book your free place email archives@tameside.gov.uk or call 0161 342 4242 (Tuesday to Thursday 10am to 5pm and Saturday 10am to 1pm).**

7 May - Military expert Stewart Cook looks at the pivotal role.

18 June - Journalist Brian Groom shares the stories of 20 fascinating figures from Manchester's rich past.

Tea and Tales (Reading Friends) - Adults are welcome to join us to chat, share stories and have fun. First Thursday of the month (1.30 to 2.30pm) at Hattersley Library, Hattersley Hub, Stockport Road - 0161 342 4000, option 5; and third Wednesday of the month at Stalybridge Library, Trinity Street (10.30 to 11.30am) - 0161 342 4000, option 8.

Time for a Rhyme - Rhymes, singing and stories for children aged four and under. **Ashton Library, Tuesdays, 2pm; Denton, Thursdays, 2.15pm; Droylsden Library, Thursdays, 9.30am and 10.30am; Dukinfield Library, Thursdays, 2.15pm; Hattersley Library, Mondays, 2.15pm; Hyde Library, Tuesdays, 10.30am; Mossley Library, Mondays 2.15pm; Stalybridge Library, Tuesdays, 10am.**

Markets

Hyde Artisan Market - First Saturday of every month (March to December). Get the best of arts, crafts and handcrafted goods in the market square between 9am and 3pm.

Farmers' Market - Get the best locally-sourced produce. **9am to 2pm on the last Sunday of every month at Ashton Market.**

Table-top Market - Every Sunday, 9am to 2pm, at Old Cross Street car park.



intameside.co.uk



Discover App

Our Discover app showcases all that the borough has to offer. Split into three main sections, Shop, Eat and Do, businesses and organisations are showcased along with offers and events.

Discover is the only whole place app available and includes green spaces, places of interest, events, historic information, national and independent businesses, food and drink and other entertainment. There is also potential to connect shoppers to loyalty schemes at stores.

Anyone interested can download the app by searching for Discover in app stores.



Jo - Lead Employment Officer

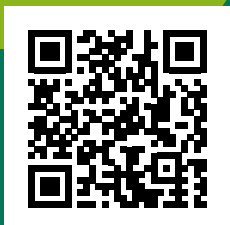
Join #TeamTameside

Be the Difference

Are you ready for the next opportunity and the chance to join #TeamTameside?

Take a look at the variety of roles we have available which could be perfect for you. Explore current vacancies at

greater.jobs/tameside



Scan the QR code
to find your next role

Tameside
Metropolitan Borough