

# Family Activity Trails HAUGHTON DALE Denton

**Sandwiched between the Peak Forest Canal in Hyde and Haughton Green, this is Tameside's largest Local Nature Reserve.**

There is a whole network of paths for walkers, cyclists and horse riders –and most of the paths are surfaced so ok for buggies. Here you can enjoy family walks alongside the Peak Forest Canal and the River Tame, play in open meadows and woodland and investigate life in the pond. Bring a magnifying glass, fishing net and a picnic and you are set up for the day!



## Things to do

- Picnic
- Woodland games
- Nature spotting
- Pond dipping
- Scavenger Hunt

You can easily access the reserve from Gibraltar Lane and Mill Lane and also from the small car parks at Apethorn Lane and Meadow Lane. Its only 1 mile along the footpaths from Meadow lane to Gibraltar Lane so not too taxing



**culture**  
Tameside



# Fun and games in the Woodland



## Capture the Flag game

- Split the family into two teams of equal sizes and find an outdoor space -amongst trees is better.
- Find an outdoor space -amongst trees is better.
- Mark out 'Home base' for each team (a couple of metres around 2 trees) make them a distance away from each other. This is the territory of each team and each team will need a 'flag' positioned in each base. (This can be a tea shirt or glove on a stick!)
- The objective of the game is to steal the 'flag' of the other group without being touched by any opposing players.
- To capture the flag a player must try and enter the opponents' territory, dodge the opposition through ducking, diving and nifty footwork to claim the flag and bring it back to their territory without being captured (tagged).
- If a player is tagged, they must stay in the place where they were caught until a teammate frees them by touching them.
- The winning group is the team who gets the flag first, regardless of the number of children who have been caught.

A 10 minute walk from Meadow Lane and here's a great spot for doing some woodland games in the clearing amongst the trees.



## Make a mini den

This activity is a lovely way for very small children to have a go at den building. Simply collect a handful of small sticks and prop them up against a tree trunk or fallen branch to make a mini den. Make the inside of your shelter nice and cosy with some fallen leaves. Now it's ready for child's favourite teddies or dolls.

**Remember not to break any branches off trees .. Only use what you find on the ground. . And dismantle your creations before you leave.**



# Stick games at HAUGHTON DALE



Use twigs, leaves or stones to play woodland 'Noughts and Crosses'.

## Twig Towers

Gather some twigs and create a twig tower. It doesn't have to be very big... It could have a square base or triangular base.. or design your own. How tall can you build it? Remember to never break twigs off living trees and always dismantle and return twigs..



## Tracks and trails

This is great fun if you and your friends make 2 teams. One team sets off and lays a trail of arrows and signs for the other team to follow. You can use twigs and stones or whatever is available. You can invent your own signs, but make sure everyone agrees them before you set off

## Host your own Woodland Games

**Event 1: Stick slalom.** Poke a long line of sticks into the ground for competitors to weave around.

**Event 2: Picnic rug tunnel.** Selflessly hand over your rug for the brave athletes – to crawl under, just like those netting things they use in the Territorial Army.

**Event 4: Hurdles.** balance a thin stick across two logs to create a hurdle to jump over, or to crawl or limbo under.

**Event 5: Gymnastics.** How far can our brave athletes go without touching the woodland floor? Extra points for arms held out straight. Or little jumps.

### Event 6: The sprint (back to the car)

There's just time to let competitors know that the overall gold medal will go to the child who runs/walks/skips back to the car fastest. Anything to get them back quickly, especially if it's starting to rain ...

## Make a nine square grid

With a friend collect 6 pairs of objects e.g. 2 stones, 2 leaves, etc. Make a 9 square grid each out of twigs. Decide who is the boss. The boss picks up an object and places it in his/her grid and describes to the other where it is e.g. Top right, one to the left and two up. The friend must place the identical object in the same place on their grid. At the end, look at the grids, are they the same

## For older children...

**How many triangles can you make with 10 sticks?**

(They don't have to be the same length)



# Haughton Dale LEAF SPOTTING



Take a walk to the woodland area and see how many different kinds of tree you can spot from their leaves.



Silver Birch



Hazel



Elder



Horse chestnut



Hawthorn



Sweet Chestnut



Rowan



Holly



Oak

What others can you find? You can download tree Id information from:  
[www.woodlandtrust.org.uk/trees-woods-and-wildlife/british-trees/tree-id-app/](http://www.woodlandtrust.org.uk/trees-woods-and-wildlife/british-trees/tree-id-app/)



# Haughton Dale POND DIPPING

There's a great wildlife pond in Haughton Dale, so why not grab your nets and see what's lurking below the surface.

## How to pond dip

First, scoop some pond water into your container so that any creatures you find will be happy swimming around in it.

**Then kneel by the side of the pond – don't lean too far over the edge of the barrier or there's a chance you'll fall in.**

Sweep your net slowly through the water. Make sure you don't stir up the mud at the bottom as that will make it hard to see anything.

Lift up your net and carefully turn it inside out so anything you've caught drops into the container. You can then use your spoon to scoop them up and get a closer look. Don't pick the creatures up with your hands – they'll be very tiny and you could hurt them.

**When you've had a good look at what you've found, carefully pour the water from your container back into the pond and make sure all of the creatures are safely returned.**

## What you will need

### A container

A shallow one is better for looking at creatures



### A plastic spoon

for looking closely at your creatures



### A fine mesh net

Fine mesh will catch more small creatures



### hand wipes

Always wash hands afterwards.

Cover any cuts or grazes with a sticking plaster

**Before you put your nets in the pond, take a look at what's around the pond and on the surface. Can you spot any of these?**



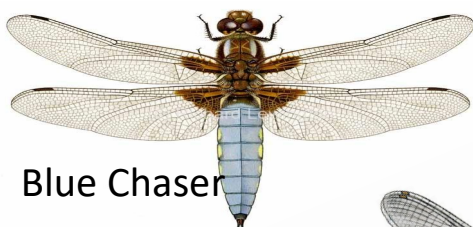
Whirligig Beetle



Mayfly



Backswimmer



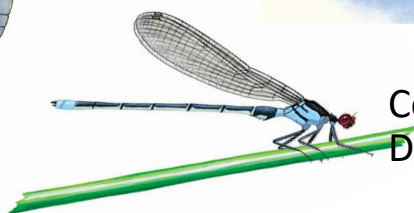
Blue Chaser



Pond Skater



Large Red Damselfly



Common Blue Damselfly

A pair of moorhens are resident on the pond all year round, during the summer they can have up to three broods and feed on pond vegetation and invertebrates



Moorhen

# Haughton Dale POND DIPPING

How many pond creatures can you spot?



water boatman



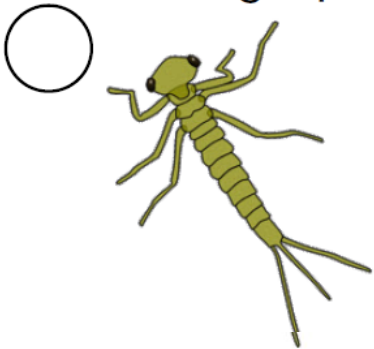
leech



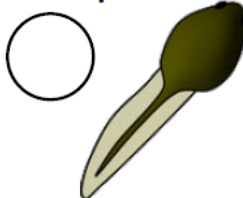
pond skater



damsel nymph



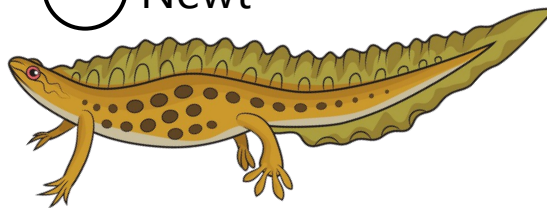
tadpole



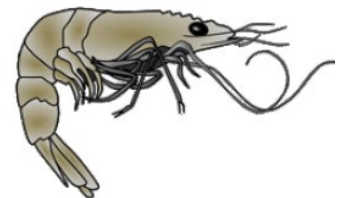
caddis fly larvae



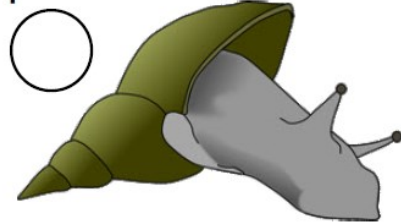
Newt



fresh water shrimp



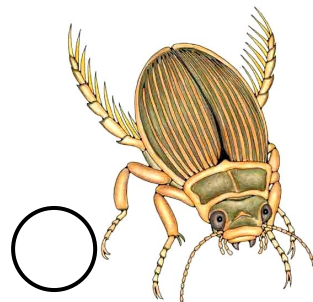
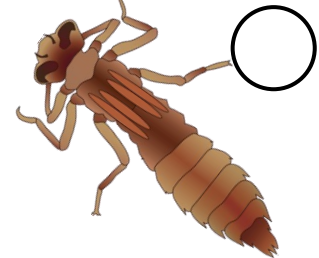
pond snail



whirligig beetle



dragonfly larvae



Great diving beetle



Rams horn snail



# Haughton Dale **SCAVENGER HUNT**

**This is a great site for a scavenger hunt.  
How many things can you find?**

Why not set a time limit?

How many can you fit in a tiny box?

Just remember to take care and not collect living creatures,  
pick a petal not a whole flower and careful of anything sharp.



- |  |   |
|--|---|
| <input type="checkbox"/> Something shiny     | <input type="checkbox"/> Something with stripes |
| <input type="checkbox"/> A heart shaped leaf | <input type="checkbox"/> Something round        |
| <input type="checkbox"/> Something soft      | <input type="checkbox"/> Something red          |
| <input type="checkbox"/> Something hairy     | <input type="checkbox"/> Something pink         |
| <input type="checkbox"/> Something manmade   | <input type="checkbox"/> Something bright       |
| <input type="checkbox"/> A chewed leaf       | <input type="checkbox"/> Two kinds of leaves    |
| <input type="checkbox"/> A piece of bark     | <input type="checkbox"/> A round stone          |
| <input type="checkbox"/> A white stone       | <input type="checkbox"/> A seed                 |
| <input type="checkbox"/> A yellow flower     | <input type="checkbox"/> Something prickly      |
| <input type="checkbox"/> Something blue      | <input type="checkbox"/> A bendy twig           |
| <input type="checkbox"/> A 'y' shaped twig   | <input type="checkbox"/> Something beautiful    |



# Haughton Dale BIRD SURVIVAL HUNT

This is a good game to play as a family and Haughton Dale is a great place to spot all kinds of birds. Each imagine you are a small bird and must find enough food to survive. Here is a typical menu.



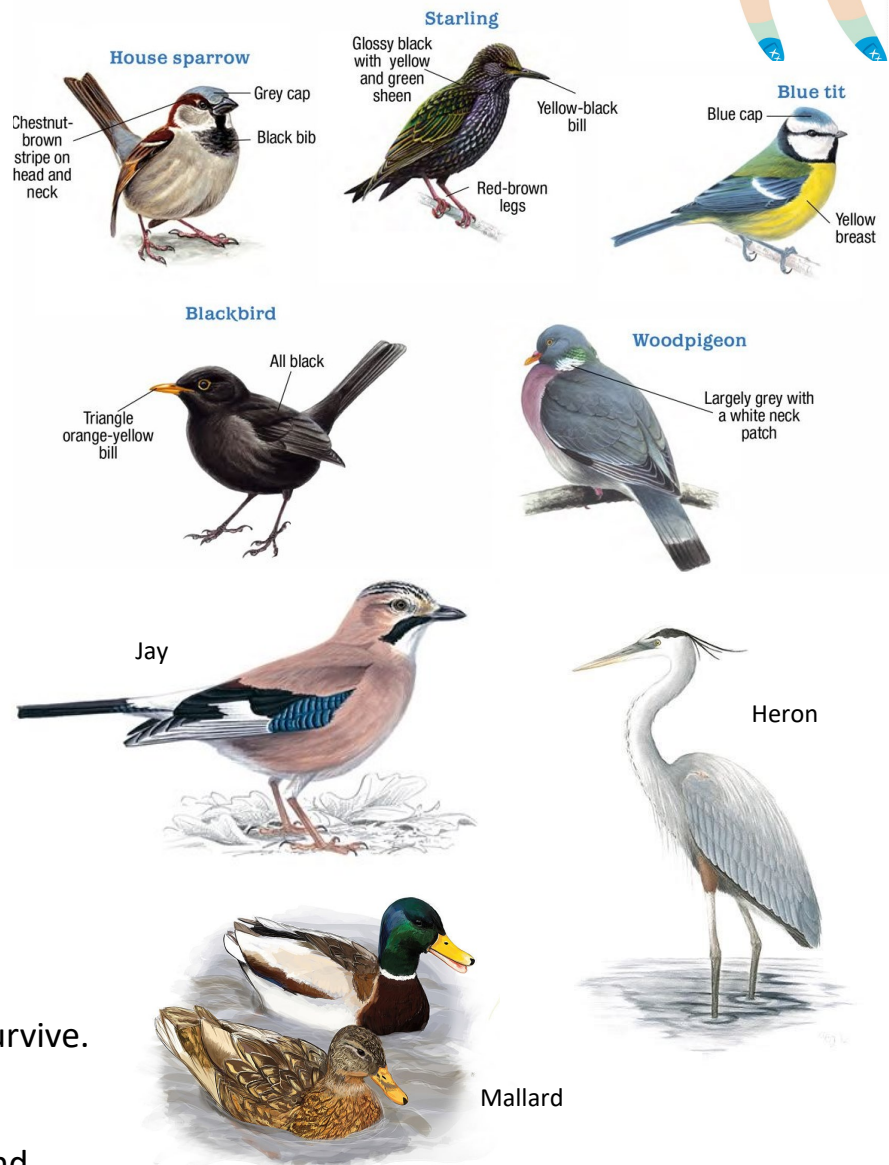
How many can you find.  
Each item is worth 1 point.

- Small Spider
- Small creature on tree bark
- Snail
- Caterpillar
- Centipede
- Ground beetle
- Pine cone
- Earthworm
- Small seed
- Flying insect
- Berry
- Maggot or grub
- Fruit tree bud

**Total score:**

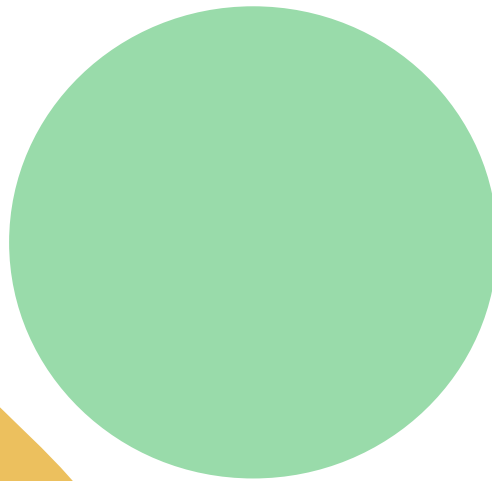
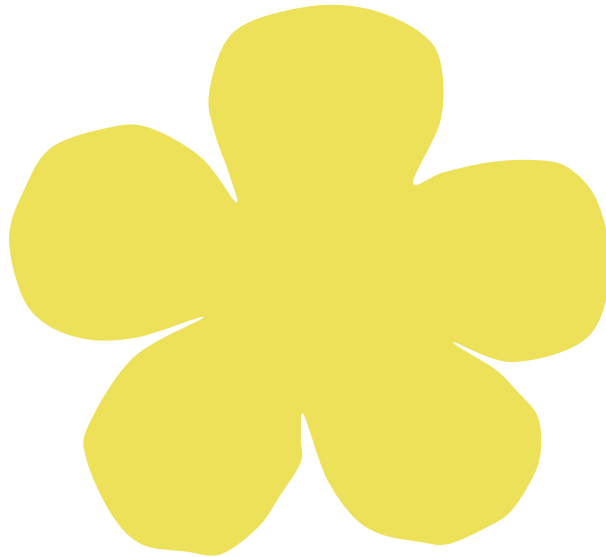
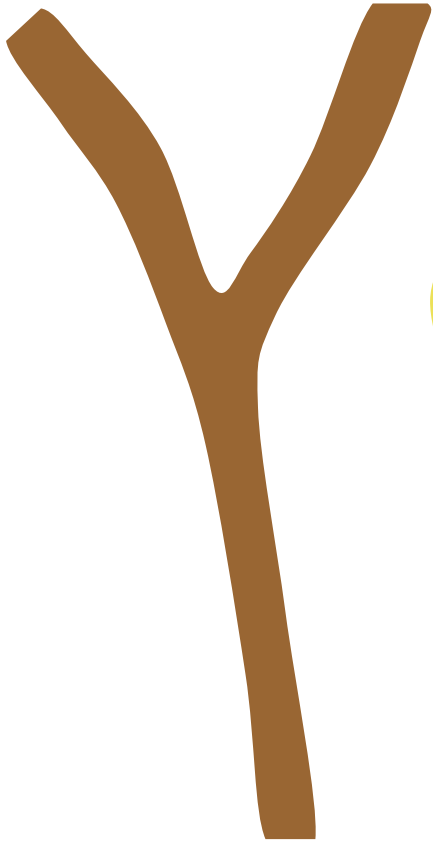
**10-12** = Your sharp eyes and determination mean you will survive.  
**7-9** = You will probably survive.  
**4-6** = Your survival is doubtful.  
**0-3** = Oh dear! You haven't found enough.

Can you spot any of these birds?



# Discover the SHAPES in nature

How about trying to match some shapes?



# Haughton Dale Minibeast Hunt



Armed with a small pot or tray, a small paintbrush and a magnifying glass there's a whole world of minibeasts waiting to be discovered.

- Bugs can be found everywhere but a great place in Haughton Dale is in the grassy meadows or undergrowth in woodland.
- Dark damp spots under rocks and logs are good hunting grounds for things like worms, woodlice and spiders. You'll find critters like ladybirds, caterpillars and aphids on flowers, plants and leaves.
- A paintbrush to gently brush the bug into your tray will give you a chance to take a closer look with your magnifying glass.
- Don't leave your bugs in the tray too long and always put your bug back carefully where you found it and replace upturned rocks and logs.
- Always wash hands afterwards!



Millipede



Bee



Ladybird



Butterfly



Snail



Plant bug



Woodlouse



Earthworm



Slug



Centipede



Beetle



Fly

