



Local news and events from  
**Tameside Council**

# Here for you

#ProudTameside

Celebrating our  
town centres and  
communities  
this Christmas

 **Tameside**  
Metropolitan Borough

FOLLOW US ON **FACEBOOK, INSTAGRAM, LINKEDIN AND X, (TWITTER)**

ISSUE 98 | WINTER 2025

# Christmas and New Year Recycling Arrangements

\*There will be no brown bin collections from 25 December until 7 January inclusive\*

**Monday 22, Tuesday 23 and Wednesday 24 December** - Collections as normal

**Thursday 25 December** - No Collections

If you are due a green (general waste) bin collection, it will be collected on Monday 29 December

If you are due a black (comingled recycling waste) or a blue (paper recycling waste) bin collection, it will be collected on Wednesday 31 December

**Friday 26 December** - No Collections

If you are due a green (general waste) bin collection, it will be collected on Tuesday 30 December

If you are due a black (comingled recycling waste) or a blue (paper recycling waste) bin collection, it will be collected on Friday 2 January

**Monday 29 December** - Monday Collections as normal except no brown bin collection

**Tuesday 30 December** - Tuesday Collections as normal except no brown bin collection

**Wednesday 31 December** - Wednesday Collections as normal except no brown bin collection

**Thursday 1 January** - No Collections

If you are due a green (general waste) bin collection, it will be collected on Monday 5 January

If you are due a black (comingled recycling waste) or a blue (paper recycling waste) bin collection, it will be collected on Tuesday 6 January  
**Friday 2 January** - Normal Collections except no brown bin collection

**Monday 5 January** - Monday Collections as normal except no brown bin collection

**Tuesday 6 January** - Tuesday Collections as normal except no brown bin collection

**Wednesday 7 January** - Monday Collections as normal except no brown bin collection

**Thursday 8 January** - Collections as normal

**Friday 9 January** - Collections as normal

## Helpful hints!

- Download our bin app for 2026 collection dates and for updates and alerts for your Christmas waste and recycling collection arrangements
- Christmas trees can be left out with your brown bin for recycling **from Thursday 8 January**
- We will collect any additional recyclable waste which is left out with your black or blue recycling bin in a clear or labelled bag
- Please park considerably so that waste collection vehicles have unimpeded access to all areas and roads where bins are kept.



## Keeping in touch over Christmas

The council website is available 24 hours a day, seven days a week, for people to access council services and information.

[tameside.gov.uk](http://tameside.gov.uk)



### Libraries

**Ashton, Hyde and Stalybridge** Libraries will close at 5pm on Wednesday 24 December.

**Mossley** Library staffed hours will close at 1pm on Wednesday 24 December while Open+ hours will close at 5pm on Wednesday 24 December.

**Denton** Library staffed hours will close at 5pm on Monday 22 December while Open+ hours will close at 5pm on Wednesday 24 December.

**Droylsden** Library staffed hours will close at 1pm on Monday 22 December while Open+ hours will close at 5pm on Wednesday 24 December.

**Dukinfield** Library staffed hours will close at 1pm on Tuesday 23 December while Open+ hours will close at 5pm on Wednesday 24 December.

**Hattersley** Library staffed hours will close at 5pm on Tuesday 23 December while Open+ hours will close at 5pm on Wednesday 24 December.



### Call Centre and Customer Services

Will close at 5pm on Wednesday 24 December 2025 and re-open at **8.30am on Monday 5th January 2026.**



### Local Studies and Archives Centre

Will close at 5pm on Wednesday 24th December and reopen at **10am on Tuesday 6th January 2026.**



### Portland Basin Museum

Will close at 5pm on Wednesday 24th December and reopen at **10am on Tuesday 6th January 2026.**

## Download our free app

from **Apple Store** or **Google Play Store** where you can check the date of your collections, set reminders and report missed/lost bins. For more information please visit [tameside.gov.uk/recycling](http://tameside.gov.uk/recycling)

2



# Welcome to the winter edition of Here For You

## Welcome to the winter edition of the Tameside Here For You

It's that time of year when we look to gather and celebrate with family and friends. I hope you'll be able to join us in attending the fantastic events we've planned across the borough that are designed to bring everyone together and spread Christmas cheer. The Tameside Lantern Parade in Stalybridge on Saturday 15 November kicks off the feast of festive fun. You can find all the details on page 4.

Our regeneration schemes to rejuvenate our town centres continue to progress well with all the information on pages 6-8. To further support our town centres, our two hours of free parking in our car parks is proving a huge success with car park use soaring by more than 40%. The scheme has also won an award from The Federation of Small Businesses. You can find out more on page 9.

Elsewhere, our Helping Hand campaign continues to provide support to residents in need. You can get details

of the one-stop-shop for local support services and organisations on page 15. On page 10 you can find out how our Shared Lives scheme is empowering adults with a range of physical, learning and mental health needs to live an independent life in their local community by matching them with a carer. And we look back on a summer full of fun and entertainment on page 17 after a series of cultural activities, with our What's On Guide on pages 22 and 23 detailing what's to come.

Please keep an eye out for each other as the cold and dark nights set in and support your community where you can. And I wish you all a very happy Christmas.



**Cllr Eleanor Wills**  
Tameside Council Executive Leader



**P4 Magical Lantern Parade**



**P17 Summer Fun in Tameside**

## Contents

Magical Lantern Parade .....	4
Staying Safe in Winter .....	5
Transforming Town Centres .....	6-8
Free Parking Award .....	9
Living Well at Home .....	10-11
Family Hubs .....	12-13
Think Green - Community Safety .....	14
Helping Hand .....	15
Smoking in Pregnancy .....	16
Looking back at Summer Fun.....	17
Think Green - Walking and Cycling .....	18
Proud Tameside .....	19
Shining a Light on Suicide.....	20
Foster Care and Adoption .....	21
What's On .....	22-23
Cost of Living Support .....	24



# Magical Lantern Parade

## set to bring seasonal sparkle to Stalybridge

The magical Northern Lights Lantern Parade is set to make its highly anticipated return this winter on Saturday 15 November, marking the start of Tameside's festive celebrations.

The spectacular yearly event will take place in Stalybridge, offering an evening of sparkling culture and celebration. The event will combine unforgettable lantern displays and vibrant performances to create an electric atmosphere.

Tameside Council, Global Grooves and Handmade Productions will be collaborating with local community groups and volunteers, and together will host an extraordinary evening to start the countdown to Christmas.

**Stalybridge Town Centre**  
**Saturday 15 November**  
**Christmas Lantern Parade 5pm-7pm**

Residents have had the chance to create their very own lanterns, which will be used to line the route and light the way for the parade. The event will conclude with the switching on of Stalybridge's Christmas tree lights.

Everyone is invited to take part—whether by joining the parade, enjoying the performances, or simply soaking up the festive atmosphere.

As always, the evening will also include local talent, dancers, and artists to help create a glowing spectacle that captures the spirit of the season. This year the parade will also be supported by a festive-themed Stalybridge Street

Fest, which has been moved to Saturday so everyone can make the most of the evening.

### Get involved in the fun!

There are plenty of ways to join the excitement! Whether it's crafting a lantern, performing on stage, or simply enjoying the event as a spectator, there's something for everyone.

Want to learn more? Email us at [events@tameside.gov.uk](mailto:events@tameside.gov.uk) to discover how you can take part.

For the latest updates on events happening in your town and ways to get involved, visit

[intameside.co.uk/christmas](http://intameside.co.uk/christmas)

### Town Centre Celebrations

Christmas Celebrations will be taking place with events being held across the borough throughout November and the beginning of December.

Each of Tameside's nine towns will host a festive event with music, food, and crafts, as they each turn on their Christmas tree lights. As always, they are fantastic community events and bring our towns to life with Christmas spirit. They also support the local economy and local businesses.

**Friday 21 November** - Dukinfield

**Saturday 22 November** - Ashton-u-Lyne, Denton

**Friday 28 November** - Audenshaw

**Saturday 29 November** - Droylsden, Hyde

**Friday 5 December** - Hattersley, Mossley

**Saturday 6 December** - Micklehurst



More information  
can be found at:

[intameside.co.uk/whats-on](http://intameside.co.uk/whats-on)



Executive Member Cllr Laura Boyle with members of the gritting team

# Staying safe in winter

Our teams work hard to monitor the weather and road temperatures and are on standby and ready to grit the roads so residents can get around in cold weather.

Gritting updates are posted on X @TamesideCouncil. Roads are gritted on a priority basis.

## What can you do to prepare?

Keeping the pavement outside your property clear of snow and ice is a great way to help as long as you aren't making areas more dangerous or slippery. Stocking up on your own gritting supplies from supermarkets, garden centres and DIY outlets means you can be ready to clear your own paths and driveway and helps to keep your family or neighbours safe.

If you would like to find out more about ways you can prepare for winter and the action the Council is taking to clear roads, please go to:

[tameside.gov.uk/winterweather](https://tameside.gov.uk/winterweather)

## Savvy Seasonal shopping

Don't forget our amazing friendly and great value local markets will be open for all your festive essentials and gifts in December.

With great produce and all sorts of items at hand you'll always be able to find the perfect gift for anyone or simply enjoy catching up with some of our fantastic traders or grab a tasty treat.

To find out more about when the markets are open over the festive season visit our websites:

Hyde Market [hyde-market.co.uk](https://hyde-market.co.uk)

Ashton Market [ashton-market.co.uk](https://ashton-market.co.uk)

**Ashton Market**  
since 1413

**Hyde Market** est. 1848

	Ashton	Hyde
Monday 22 December	9am-5pm	9am-5pm
Tuesday 23 December	9am-5pm	9am-5pm
Wednesday 24 December	8.30am -4pm	9am-4pm
<b>Thursday 25 December</b>	<b>Closed</b>	<b>Closed</b>
<b>Friday 26 December</b>	<b>Closed</b>	<b>Closed</b>
Saturday 27 December	9am-5pm	9am-5pm
<b>Sunday 28 December</b>	<b>Closed</b>	<b>Closed</b>
Monday 29 December	9am-5pm	9am-5pm
Tuesday 30 December	9am-5pm	9am-5pm
Wednesday 31 December	9am-4pm	9am-4pm
<b>Thursday 1 January</b>	<b>Closed</b>	<b>Closed</b>
Friday 2 January	normal opening times resume	normal opening times resume

**LIVE  
WORK  
INVEST**

**IN TAMESIDE**



Funded by  
UK Government

**GREATER  
MANCHESTER**  
DOING THINGS DIFFERENTLY

**Tameside**  
Metropolitan Borough

# TRANSFORMING ASHTON TOWN CENTRE FOR THE FUTURE

**Exciting plans to transform Ashton town centre are moving closer.**

The transformation of Ashton town centre is moving forward to achieve a vision for new homes, a revitalised high street and affordable work and cultural spaces.

The key regeneration priorities are:

- Revitalising the high street with shops, cafes, workspaces, and community services.
- Improving public spaces to make the town safer and more attractive.
- Creating affordable workspaces and cultural venues.
- Building new homes to support local businesses and attract more people.

This plan builds on the improvements already happening in the Market Square and will bring together key areas in the Ashton Mayoral Development Zone (AMDZ), like St Petersfield and the shopping centres, under one shared vision. Plans may also be linked with opportunities in Droylsden Town Centre, in line with the Droylsden Masterplan Framework (approved in May 2025).

This new vision has now been approved by the Council's Executive Cabinet, setting the stage for the search to find a development partner who will help bring the plans to life. The regeneration could bring:

- Up to 2,400 new homes to create a lively town centre community.
- 12.5 hectares of commercial space to support local businesses and jobs.
- Greater Manchester's first Bee Network Station, connecting Metrolink, buses, and trains for easier travel.

The goal is to make Ashton a vibrant, modern town with more homes, better transport, and new spaces for businesses and the community. The Council hopes to appoint a developer by spring 2026 to work in partnership on this long-term project.

To find out more go to:

[www.tameside.gov.uk/AMDZ](http://www.tameside.gov.uk/AMDZ)

## ASHTON MARKET SQUARE

Work is continuing on Ashton Market Square and our engineers and mason paviours have been using their amazing artisan skills to lay the Florentine paving. Work is set to continue until spring 2026.



## STALYBRIDGE TOWN CENTRE REGENERATION

**Exciting changes are also underway in Stalybridge as part of the £20 million Capital Regeneration Programme.**

In July, residents were invited to a consultation session to learn about and give feedback on proposed plans for a new multi-storey car park and footbridge which would enhance parking and improve connectivity across the town centre.

Improvements to public realm and active travel routes are already being delivered, and work is progressing on cultural and heritage assets, with completion expected by March 2027.

Plans have been submitted to improve accessibility at the historic Astley-Cheetham Library and Art Gallery. Proposals include installing an internal lift and enhancing library access,

with construction expected to begin later this year.

At the heart of Stalybridge's cultural regeneration, the Civic Hall has hosted vibrant events including the Comedy Weekender and an indoor Beach Pop-Up, bringing the community together and showcasing the venue's potential as a cultural hub.

Plans for Stalybridge West are also advancing, unlocking land for future housing and investment and to get a development partner onboard in 2026.

To find out more go to:

[www.tameside.gov.uk/stalybridgeregeneration](http://www.tameside.gov.uk/stalybridgeregeneration)

**LIVE  
WORK  
INVEST**

**IN TAMESIDE**



Funded by  
UK Government

**GREATER  
MANCHESTER**  
DOING THINGS DIFFERENTLY

**Tameside**  
Metropolitan Borough

## UPDATED PLANS SUBMITTED SET TO FINALISE PLANNING APPLICATION FOR GODLEY GREEN GARDEN VILLAGE

Godley Green will deliver around 2,150 new homes for Tameside. Work has been ongoing on-site investigations and refinements to enhance the plans, with public and stakeholder feedback playing a key role throughout the process. Updated plans have now been resubmitted for approval.

The plans are supported and led by master developers the MADE Partnership, who are working with the council to make sure everything is planned well, from roads and transport to parks and community spaces.

Over 43% of the land will be kept green, with play areas, nature spaces, and places for wildlife. There will be homes for everyone, including affordable options for everyone from first-time buyers to older people.

The village will have shops, healthcare, and leisure spaces, all connected by easy transport links. It's designed to be a friendly, sustainable place where people can live, work, and enjoy nature.

The project will also create at least five hundred jobs every year during its 15-year build, with chances for training and apprenticeships for local people also included to support growth in the borough.

Godley Green is part of a bigger plan to help Hyde Town Centre grow and protect nearby areas from too much building and provided much needed housing that cannot be fulfilled through brownfield sites alone.

You can view and formally comment on the updated plans through the planning application on the Council's planning portal.

## FURTHER ADDITION TO HATTERSLEY DISTRICT CENTRE

Work is underway on Hattersley Trade Park, a new mixed-use development in the district centre which is being led by Maple Grove Developments.

Located near Stockport Road and Ashworth Lane, the site will feature an Aldi store, Costa Coffee drive-thru, sixteen ultra-rapid EV chargers, 179 parking spaces and eight employment units. The project aims to boost local jobs and facilities for local people with completion expected by June 2026. The development is a result of strong partnerships between Maple Grove, Tameside Council, and Onward Homes. It's part of ongoing efforts to revitalise Hattersley and improve opportunities for residents and the wider community.



Sod cutting at the Hattersley Trade Park

[www.tameside.gov.uk/hattersley](http://www.tameside.gov.uk/hattersley)

## BIRCH LEA PARK IN HATTERSLEY



The Leader and Ward Councillors were delighted to join residents, staff, Onward Homes, Jonathan Reynolds MP, and valued partners to officially open Birch Lea Park

It's really important that we support inclusive, age-friendly communities where everyone can thrive. Birch Lea is a brand-new Housing with Care scheme offering 91 modern apartments designed for residents aged 55 and over. This fantastic development includes on-site facilities like a bistro and hair salon, helping residents live independently in a safe, welcoming, and vibrant community.

Birch Lea Park is a major milestone in the 20-year regeneration of Hattersley and Mottram, and a shining example of what strong partnerships can achieve. Find out more about living Birch Lea at [www.onward.co.uk/birch-lea-park](http://www.onward.co.uk/birch-lea-park)

## HYDE'S REGENERATION EFFORTS BRING VIBRANCY AND EVENTS TO TOWN CENTRE

Hyde town centre is buzzing with energy thanks to ongoing regeneration efforts led by Tameside Council and the Hyde Accelerator Partnership. Supported by UK Government funding, improvements include upgraded market stalls, new seating, decorative lighting, and vibrant public art. Events like "Social on the Square" celebrate youth creativity, while a new art trail featuring local artists brings colour to shop windows. These initiatives aim to create a welcoming, lively space for residents and visitors, boosting local pride and supporting businesses.

Improvement work on the roof is also set to start on Hyde Town Hall which will play a central role in the town's regeneration plans as outlined in the Hyde Town Centre Masterplan. Plans aim to transform the Town Hall into a vibrant community and cultural hub, making it a focal point for events, creativity, and civic pride. This is part of a broader strategy to revitalise key assets in the town, including Market Square and Clarendon Shopping Centre.

These regeneration projects have been supported by funding from the UK Shared Prosperity Fund and the High Street Accelerator programme, with further investment being sought to realise the full vision. Find out more at:

[tameside.gov.uk/hydetowncentre](https://tameside.gov.uk/hydetowncentre)



## WORK CONTINUES ON CREATING THE VISION FOR DENTON'S FUTURE

Residents and businesses have helped to shape plans for public spaces in Denton as part of wider improvements for the town centre. During engagement sessions, feedback has been provided on ideas drafted for significant improvements including improved pedestrian and cycling routes, and cycle parking.

The plans will use the ring-fenced £16.7m in Levelling Up Funding granted to help transform the town based on the original Level Two bid submission to Government in July 2022.

The project team, which consists of consultants Planit and Placed alongside the Council's Strategic Growth team, have talked to local businesses, stakeholders, and residents from Denton and across Tameside to find out how everyone would like to see roads and pedestrian spaces improved. Just under £3 million is also being utilised to improve the Festival Hall, which has now closed for a prolonged period, with costs also included for repairs to Denton Town Hall.

The projects will bring benefits to the town including consolidating public services, improving community spaces, enhancing travel routes, and improving the town's appearance.

[tameside.gov.uk/destinationdenton](https://tameside.gov.uk/destinationdenton)



# Free arking initiative wins award for supporting businesses

**Tameside's free parking initiative has attracted a business award for supporting town centres.**

The Federation of Small Businesses (FSB) presented its Business Buddy Award to the Council after the authority introduced two hours of free parking Monday to Saturday before 6pm in all of its car parks.

The scheme, introduced in June to support residents and businesses, is proving a huge success, with car park use soaring by over 40% and traders reporting they are busier.

FSB's Business Buddy Award recognises individuals, firms or public bodies that have gone the extra mile or done something particularly special for the wider small business community.

FSB Development Manager for Greater Manchester, Robert Downes, said: "We very rarely issue our Business Buddy Award, but this was a no brainer when we heard what Tameside Council were doing for their high street businesses right across the borough. This will be a lifeline for many of them.

"At a time when our high streets are really struggling, it's fantastic to see a Greater Manchester council stepping up and doing exactly what's needed for small businesses in this way."



**Executive Member for Towns, Transport and Connectivity Cllr Stephen Homer receiving the award from Robert Downes**

The free parking is available across all of the authority's car parks, including the council-run car parks at Tameside Hospital and the car park at Denton Wellness Centre.

Motorists are reminded they still need to get and display a valid ticket to get the free offer.

For further information see [www.tameside.gov.uk/parking](http://www.tameside.gov.uk/parking)

## GM Strategy pledges will drive economic growth and social progress in Tameside

**Tameside is at the heart of the Greater Manchester Strategy 2025-2035 and ready to drive change that will benefit all.**

The ambitious ten-year vision for GM aims to ensure that everyone can feel the benefits of continued economic growth.

In Tameside, it includes establishing a Mayoral Development Corporation (MDC) in Ashton and Stalybridge to create a national template for transport-led regeneration. This is in addition to an overarching commitment to improve public transport connections to key destinations across Greater Manchester.

There is also a pledge to redevelop Ashton Town Hall by 2030 and bring its long heritage back into the heart of the town centre.

Other commitments include making the case for more frequent train services from Ashton and working with partners to make sure that people in Tameside can access public transport that connects its towns.

It also states that Tameside will have 20% more social and affordable housing built for its residents, an extra 600 homes over five years, driving down homelessness and inequality by 2030.

You can read the full strategy at [togetherwearegm.co.uk](http://togetherwearegm.co.uk)



# Resident celebrates



## over two decades of caring through Shared Lives

**Jackie, 61, from Stalybridge, supports both Anne and Mel through Shared Lives, a scheme empowering people with a range of needs to share daily life with a carer.**

Jackie has been a Shared Lives Carer since 2003. Tameside Council's Shared Lives scheme empowers adults with a range of physical, learning and mental health needs to live an independent life in their local community by matching them with a carer. Support can be long-term, respite, or day support.

Flexibility allows for unique support to be fitted around the interests of people, so they can live a good life, doing the things they enjoy.

From holidays to Haven and Disney to walks out with her grandson, Jackie supports both Anne and Mel through Shared Lives. Anne has lived with Jackie for 14 years and Jackie has supported Mel with respite for 10 years - both have care and support needs.

When asked about why she loves being a carer, Jackie said: 'I find it very rewarding and fun, it makes me feel so happy.' Jackie added: 'I enjoy watching people grow in confidence and try new things that they just needed a little bit of support and encouragement to do.'

She feels like Anne and Mel have been well matched to her, they all have very similar interests including shopping for new clothes, going on holidays and even trips to the theatre.

Watch this video to hear Jackie, Anne and Mel talk about some of the things they've done during their time together: <https://www.youtube.com/shorts/dacK42bHf0M>

Tameside Council recruit, train, match, and support people over the age of 18 to become Shared Lives Carers. Carers must be flexible, sensitive, tolerant, and patient with a genuine interest in supporting people. No formal qualifications are expected, and they welcome people from different backgrounds, with different skills and life experience.

Find out more about being a Shared Lives Carer and how the scheme can support adults with a range of needs at [www.tameside.gov.uk/sharedlives](http://www.tameside.gov.uk/sharedlives), calling 0161 342 5151 or email [sharedlives@tameside.gov.uk](mailto:sharedlives@tameside.gov.uk)



Jackie (Shared Lives Carer) with Anne and Mel on a short break

## Connecting the dots for the Right Support



Adults Occupational Therapy Team with Tameside Council Executive Member for Adult Social Care and Inclusivity Cllr John Taylor.

**Adult Services Occupational Therapy team provide fantastic support to residents in Tameside, making sure they can live safe and well in the place they call home.**

The team are enthusiastic and committed to their vision centred around early support, which has been a crucial part of reducing waiting times for their services.

They emphasise how vital it is to look at someone's situation as a whole and to work closely with skilled colleagues across services to tailor support. The team note the importance of providing simple equipment, like a grab rail, as soon as possible. This can prevent someone needing more substantial support like stair lifts or home adaptations. Despite the continued demand on their service, waiting times remain stable and are still being reduced.

For more information on care and support for people aged 18+ in Tameside, visit [tameside.gov.uk/adults](http://tameside.gov.uk/adults)



# Tameside's Community Response Service Provide Lifesaving Support

**TAMESIDE'S Community Response Service (CRS) has responded to over 2,900 falls in the last 12 months, preventing over 2,653 residents being admitted to hospital.**

CRS are Tameside Council's in-house telecare support service, helping people to live well in the place they call home. Over the last 12 months CRS has responded to over 2,900 falls and in only 262 cases an ambulance was needed. This means 2,653 people avoided unnecessary hospital stays and an estimated £1.2 million was saved.

The team has also received 2141 smoke detector activations, where 5 resulted in actual fires, their service providing lifesaving support.

The service is based in Dukinfield Town Hall, where customers' telecare devices are linked directly to their control centre. They provide support and reassurance to residents (18+) and their loved ones 24 hours a day, 365 days a year.

Devices are linked to the control centre and range from pendants that customers can press if they need assistance to others that are automatically activated if someone falls or has a medical emergency. Other sensors are triggered by smoke, carbon monoxide, a door being left open, a tap

being left on, or medication not being taken.

The team access Digital Health Services, in partnership with Tameside Hospital, allowing their workers to assess people's vital signs (blood pressure, oxygen levels and temperature) in the comfort of their own home. The nurses contacted can then provide suitable medical advice and decide if hospital admission is needed.

Find out more about CRS and how they can support you or a loved one at [www.tameside.gov.uk/crs](http://www.tameside.gov.uk/crs) or call 0161 342 5100.



Emergency Control Centre operators with Tameside Council Executive Member for Adult Social Care and Inclusivity Cllr John Taylor

## Supported to Live Well at Home



Sonia on the way to shops with Donna, Patch Co-Ordinator for Reablement.

**Our vision for Tameside Adult Services see's people living well at home, where they are supported to be a part of their local communities to live long, healthy and fulfilled lives.**

Sonia, 91, has called Ashton home since 1958 - and she's not going anywhere. She describes herself as 'fiercely independent' and is a true testament of how the right support can help people live a good life after an accident.

After a nasty fall and a long hospital stay, Sonia's confidence and mobility took a knock. With the right equipment and support from our Reablement Team in

Adult Services, she is now back living well in her own home.

After discharge, the team worked closely with her to gain her confidence back and provided the right equipment to prevent any future falls. This included a walking frame with a tray, so she can move safely around the house and carry things from room to room. With the help of an outdoor walker, she's back to her daily trips to the local shop for her newspaper and weekly hairdresser appointments.

Sonia started with visits four times a day from Reablement support workers, reducing to one call a day by the end of their support. But by the time longer term support was planned, she only needed one visit a week from her chosen care agency.

Find out more about our Reablement Service and how they support people to re-gain skills and confidence after an illness or period in hospital:

[www.tameside.gov.uk/adults/reablement](http://www.tameside.gov.uk/adults/reablement)

Find out more about Tameside's Community Response Service at [www.tameside.gov.uk/CRS](http://www.tameside.gov.uk/CRS)



Scan the QR code to see Sonia tell her story or you can listen to Sonia tell her story at [youtube.com/shorts/Ds1Ba61JUo](https://youtube.com/shorts/Ds1Ba61JUo)

# Fun-filled sessions at

# Tameside Family Hubs



For many parents and carers, the summer holidays can feel ever so long, and finding ways to keep little ones entertained can be tricky. However, when it comes to play, crafts, entertainment and messy fun, there's nowhere better than Tameside's family hubs. The brilliant team put on four free fun days during the summer holidays where little ones could do all the things they love to do, and big ones could find out more about support available at the venues.

With main locations in Hyde, Droylsden, Stalybridge and Ashton, providing children with the Best Start for Life is a key priority, and a commitment which is clearly reflected in the work of local family hubs. They offer vital support to families and expectant parents across the borough, operating five days a week and providing a wide range of services.

During the school holidays, the need for support is even greater, both in terms of keeping children engaged and providing families with helpful resources. To meet this need, the fun days were held, and proved to be a huge success. A total of 1,109 children, parents, and carers attended the events, far surpassing expectations.

The popularity of these fun days has led to a noticeable increase in bookings for groups and sessions, including many families who were previously unaware of the services offered across Tameside. Additionally, there has been a rise in online registrations and new followers on the Grow Facebook page, which provides useful advice and updates for parents at every stage of their journey.

The Family Hubs' team offer creative sessions for children that are both entertaining and educational, aiding their development and preparing them for school, making a meaningful impact on families throughout the community.



To explore what free activities and sessions are available at your local family hub, visit the Grow Facebook page at [www.facebook.com/growintameside](https://www.facebook.com/growintameside)



# Former Wilko unit approved as a Hub for Post-16 Education



**Opportunities to live and learn in Tameside are set to increase following the approval by Tameside Council to lease the former Wilko unit to Tameside College.**

Subject to securing capital funding, the vacant shop unit in Ashton Town Centre could create an extra 350 spaces for learners from September 2026. This would see an additional eleven classrooms, additional examination

space and ancillary accommodation as an extension to their current base adjacent to this unit.

Local Authorities have the statutory duty to make sure that there are sufficient places in education for young people post-16. In Tameside, there is an increasing population resulting in a larger demand for post-16 provision, with a continued rise forecast in the post-16 cohort over the next few years. A peak of school leavers is predicted to take place in 2026/27.

This rise in school leavers creates an insufficiency of places which could see an increasing number of young people not in education, employment or training (NEET).

Leasing this space to Tameside College will enable the Council to assist with delivering additional resources and infrastructure to support growing communities. In turn, expanding local capacity for post-16 provision will ensure more young people can access aspirational, inclusive opportunities in Tameside whilst also bringing additional footfall to Ashton town centre businesses.

## Mental Health Awareness Event for Young People

**Young people were supported with their mental health and emotional wellbeing at a special event.**

The Children and Young People Mental Health Event brought together specialist services from Tameside Council and the NHS to provide advice and guidance.

It was designed to spark conversations about mental health, promote emotional resilience, and showcase the support available for children, carers and families.



Executive Member for Children and Families Cllr Teresa Smith at the Children and Young People Mental Health Event.



# Tackling illegal cigarettes, tobacco and vapes

**Tameside Trading Standards have seized 263,294 illicit cigarettes, 65.55KG of hand rolling tobacco and 5195 vapes in the past year, following operations with Greater Manchester Police.**

Trade in illicit cigarettes, tobacco and vapes supports crime rings, damages legitimate businesses, undermines public health and facilitates the supply of tobacco to young people.

Further to these seizures, two businesses have been shut down following closure orders granted by the court.



Both premises, one in Hyde and one in Stalybridge, had a history of selling illegal cigarettes, hand rolling tobacco and vapes. These orders will prevent these businesses from continuing to break the law and having a negative impact on the local community.

The introduction of the Environmental Protection Act (Disposable Vapes) 2024 on 1 June 2025 means that all disposable vapes are banned. Over 200 letters were sent to businesses in advance of this date, advising businesses of the new legislation and their responsibilities.

A total of 11 Tameside Trading Standards prosecutions were heard in court last year relating to a variety of offences including several relating to the supply of illicit vapes and one relating to professional diligence from a tradesperson.

Other areas of public protection and business compliance the council team work on include product safety, food standards, rogue traders, underage sales, doorstep crime, scam awareness, loan sharks and animal welfare.

Tameside Trading Standards also operate the Buy with Confidence scheme for businesses within Tameside. This scheme is a national register of Trading Standards approved businesses, run independently by local authority Trading Standards services. All the businesses on the scheme have been vetted, approved, and continue to be monitored by the team, with 71 businesses in the Tameside area currently registered.

Coming up, work in relation to illicit tobacco and vapes continues with two further operations planned for later this year.

The Tobacco and Vapes Bill is currently making its way through Parliament, and, when passed, will bring new powers to officers in tackling the ongoing issues in this area. This includes a proposed licensing regime for businesses selling tobacco and new age restrictions with the goal of a smoke free generation.

The team will also be undertaking a survey with children in Tameside schools, looking at the use of vapes by young people to further understand the issues around access to vapes and influencing factors.

For further information see:

[www.tameside.gov.uk/tradingstandards](http://www.tameside.gov.uk/tradingstandards)



# Cost-of-living support available across Tameside

**Families and individuals across Tameside are being offered support with the rising cost of living through the Helping Hand campaign.**

The campaign provides residents with access to expert advice on a wide range of issues including money management, benefit support, pension credit, energy efficiency, help with bills, health and wellbeing, housing, and employment support.

Cost-of-living pressures continue to affect people throughout the borough, making it essential to keep offering practical assistance. The colder months and festive season can be especially challenging, with many facing higher household expenses.

To learn more about the support available, visit [www.tameside.gov.uk/helpinghand](http://www.tameside.gov.uk/helpinghand).

The campaign is delivered by the Council's Welfare Rights service, which offers information and guidance on welfare benefit issues. Anyone in need of support can email [welfare@tameside.gov.uk](mailto:welfare@tameside.gov.uk), call the advice line on 0800 074 9985 (open Monday and Wednesday, 9.30am–12.30pm), or visit [www.tameside.gov.uk/welfarerights](http://www.tameside.gov.uk/welfarerights).

Face-to-face support is also available from Council services at Tameside One in Ashton, Monday to Friday, 9am–5pm. Appointments can be booked via [www.tameside.gov.uk/getintouch](http://www.tameside.gov.uk/getintouch), where you'll also find the full timetable and contact details.

For general enquiries, the Council's Customer Service Contact Centre can be reached by calling **0161 342 8355**, using the web chat at [www.tameside.gov.uk](http://www.tameside.gov.uk), or emailing [customer.services@tameside.gov.uk](mailto:customer.services@tameside.gov.uk).



Helping Hand support is available



## SMOKING IN PREGNANCY AT AN ALL-TIME LOW IN TAMESIDE

**Tameside is celebrating a remarkable public health achievement as smoking during pregnancy hits an all-time low in the borough – giving more babies than ever the healthiest possible start in life.**

The number of babies benefitting from improved health outcomes from a smokefree pregnancy is increasing, with 349 mums having successfully quit smoking during pregnancy in the last three years. Smoking at time of delivery rates for Tameside for 2024/25 were 5.8%, showing an ongoing reduction and outperforming similar areas to Tameside, as well as the North West averages, which are above 6%.

Figures published by NHS England show that around four in 100 pregnant women are smoking in the borough, showing a decrease of over 11% in the last nine years.

This is in part thanks to the introduction of Greater Manchester's Smokefree Pregnancy programme, supported by Tameside Council, which has been a key part of Greater Manchester Integrated Care Partnership's regional tobacco control strategy to make smoking history.

Since it was established in 2018, the programme's aim has been to tackle health inequalities, improve health and wellbeing, and ultimately save babies' lives.

The programme includes a referral for specialist support to the Maternity Tobacco Dependency team at Tameside Hospital where midwives and midwife support workers are available to advise and encourage pregnant women to have a healthy, smoke-free, and tobacco-free pregnancy and delivery. It includes one-to-one advice and guidance, free nicotine replacement therapy, regular carbon monoxide screening, and an incentive scheme to stay smoke free. Partners can also receive support to help quit through the offer of a vape kit from the team, or with a referral to Be Well Tameside.

Participants in the programme may be eligible for stop smoking vouchers, which are part of the national incentive scheme if they quit and remain smoke free throughout pregnancy until birth.

Alysha, a mum from Ashton, said: "When I saw the midwife and she gave me all the information about the risks to my baby before and after it was born, I knew stopping smoking was the best thing for my partner and me to do."

Smokers who are pregnant can access support by speaking to their midwife. New mums can also contact their health visitor, or any other professional such as an early years worker at any Tameside family hub who will refer them to Be Well Tameside. Alternatively they can self-refer to Be Well Tameside by calling **0161 342 5050** or emailing [bewelltameside@tameside.gov.uk](mailto:bewelltameside@tameside.gov.uk).

# Summer FUN

IN TAMESIDE



## Thousands enjoyed a fun-filled summer in Tameside

Thousands of residents took part in a vibrant summer programme of free and low-cost events and activities. Taking place in our museums, parks and civic halls, it has been a fantastically fun-packed summer of smiles in Tameside.

The VJ Day celebrations hosted over 1250 residents who came along to take part in nine different engagement activities. Nearly 2000 residents came along to the Pop-up Beach in Stalybridge over the five days of dancing, activities and entertainment.

Summer Theatre and Outdoor Arts sessions invited children and their families to take part in interactive activities and creative sessions, offering an exciting mix of fun and imaginative activities for children and families indoors.

We also had lots of fantastic community events like Stalybridge Street Fest and Mossley Farmers Markets. Stalybridge Street Fest brought residents together to enjoy live music and cuisine from all around the world. This family event also introduced an Artisan Market for local traders to offer unique products and treats. The Mossley Farmers Markets were great events for residents to come together and enjoy local food traders, local produce and local talent.

It was fantastic to see the huge take-up of events over the summer holidays. There was so much on offer for families and residents in Tameside to join in with, and it was fabulous to see so many make the most of the activities and really enjoy themselves. As always, our teams did an incredible job at hosting unique and creative activities.

To keep up to date with future events and activities in Tameside, visit our website at [www.intameside.co.uk](http://www.intameside.co.uk)





**Tameside Council Executive  
Member for Towns, Transport and  
Connectivity Cllr Stephen Homer  
with Council staff at the new path.**

# Walking and cycling route upgraded in Droylsden and Audenshaw

**Walkers, wheelers, cyclists and horse riders now have a more accessible route to enjoy in Droylsden and Audenshaw. This follows improvement works to the Bee Network along Rayner Lane, extending through to the old railway line off Heron Drive.**

The works, carried out by Tameside Council and funded by the Mayor's Challenge Fund, involved extensive vegetation clearance and resurfacing to create a 3-metre-wide shared path, improving accessibility and safety for all users. A specialist flexible surface has been laid in areas where vehicles are not allowed. This innovative material, made from a blend of recycled truck tyres and decorative stone, provides a durable, slip-resistant and permeable surface for pedestrians, cyclists and horse riders.

The upgraded bridleway connects Ashton Moss Metrolink stop on Lord Sheldon Way to the residential areas between Moorside Lane and Snipe Retail Park. The path also links into the old railway line, which continues from Manchester Road through Lees Park and into the Medlock Valley, forming part of a wider active travel network.

The improvements form part of Bee Network upgrades across Greater Manchester, aimed at encouraging active and sustainable travel, and reducing reliance on cars.

The works have removed pinch-points and improved the overall quality of the route, making it safer and more inviting for everyday journeys.

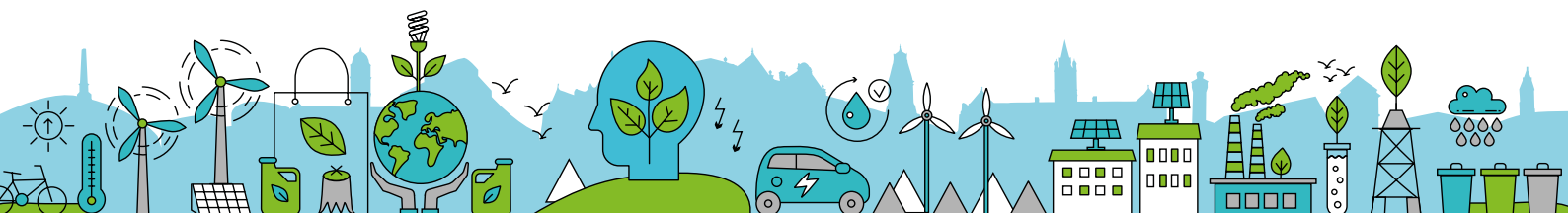
The full length of the improved route from the old railway line to Alexandria Drive is approximately 700 metres, with an additional 100 metres of path connecting to Ashton Moss Metrolink stop.

The route officially opened for public use on Monday 31 March 2025 and has already received positive feedback from residents, who say the improvements are making a real difference to their daily travel.

Access points to the route include:

- The old railway line adjacent to Heron Drive (Audenshaw)
- Alexandria Drive off Lord Sheldon Way
- Ashton Moss Metrolink stop
- The existing bridleway 'ASH 110' which can be accessed from Sandy Lane, Droylsden

Anyone interested in finding out more about active travel events in this area which promote walking and cycling should contact [Marie.Hare@tameside.gov.uk](mailto:Marie.Hare@tameside.gov.uk).



# Toddler Teddy meets his hero bin crew



## ProudTameside

### Bin crews had a small but mighty helper on their round in Dukinfield.

Two-year-old toddler Teddy got to meet his “hero” crew, help them bring the bins to the truck and also sit behind the wheel of the cab.

In return, the crew - driver Ian Bayley, Kevin Rogers and Tom Ashcroft - gave him a toy recycling truck as a souvenir of their little meet up.

The get-together was arranged after Teddy’s mum, Pam Speakes, got in touch with Tameside Council to ask if her son could meet the crew.

Pam, a school catering manager from Ashton, told how Teddy sees the brown bin recycling crew every Thursday morning when she drops him off with his childminder in Dukinfield.

She said: “Seeing the bin men is the highlight of Teddy’s week. He is always so excited to see them and they always wave and smile at him and the driver has also even gone to the trouble of jumping out of the cab and running over to Teddy to fist-bump with him and hi-five.

“I just think it’s really lovely of them. They work so hard but they always still have a smile and wave and little bit of effort goes a long way.

“My little man is obsessed with them! They are his heroes and I just wanted the chance to say thank you to them for everything they do.”

For information on waste and recycling collections see [www.tameside.gov.uk/recycling](http://www.tameside.gov.uk/recycling)



## Introducing our new chief executive



Emma Alexander, new chief executive for Tameside Council

### Emma Alexander has been appointed as the new chief executive for Tameside Council.

The former Derbyshire County Council chief executive replaces Interim Chief Executive Harry Catherall, who joined Tameside in October 2024 as a temporary measure to bring stability and leadership during a period of change.

Emma has a deep understanding of local government and brings with her a wealth of experience of working in large scale, complex organisations with a clear passion for improving outcomes for local people – this has included providing leadership to support the achievement of a “Good” rating for Children’s Services in 2023 and a “Good”

rating for Adult Social Care in 2024.

Emma Alexander said: “This is a wonderful opportunity to join Tameside at such a pivotal time in the Council’s improvement journey. I know Tameside has a talented and dedicated workforce and collective drive to do the best for residents and businesses and I’m excited for the opportunity to be part of this and helping the borough to further grow and thrive.

“It’s also great to be returning to the Greater Manchester family where I know there is a shared commitment to supporting economic growth and supporting everyone to live a good life.”



SHINING A LIGHT ON  
**SUICIDE**



# Sister bereaved by suicide shares message of hope

**Helen Wilcox, from Dukinfield, was just 16 when she lost her older brother Jon to suicide.**

Only two years before, their mother had died of cancer and the trauma of the devastating double loss overshadowed her latter teenage years and early 20s – leading to her being diagnosed with post-traumatic stress disorder.

But the 32-year-old has found a positive way to channel her grief and is sharing a message of hope to help others.

Between 20 and 25 people from Tameside die from suicide on average every year. Helen was one of over 40 Tameside people who carried the Baton of Hope through the borough on 12 September 2025, as part of both a celebratory and reflective event to raise awareness of suicide and help support anyone who is affected.

Helen said: “If people who are struggling read my story, maybe it will help them to talk about their struggles too.”

Helen told how she had just finished her GCSEs at school and was working part time in Ashton Market Hall the day in 2009 that she found out Jon, 27, had died by suicide.

She said: “Jon had battled with his mental health since our mum had died - as a family we had all struggled but he felt it even more. I wear my heart on my sleeve and talked through my grief but he bottled it up.

“There was no indication of how hopeless and desperate he must have been feeling inside.

“Jon was always laughing – he was very popular and the life and soul of every gathering. He had a laugh that was like a giggle and if I close my eyes now I picture him smiling. But as a male, he didn’t talk about his feelings. We had no idea how bad things had got for him.

“I would always say now, if you are worried about someone don’t just ask how they are feeling, ask them twice to give them chance to open up. And don’t ask closed questions, which they can give one word answers to - dig a bit deeper.”

Helen is now a mum of one, working at Ashton Sixth Form College as a bursary and attendance officer and soon to start training to be a teacher.

She said: “I’ve been through some darks times but I got through it by focusing on things to live for – looking for the positives and doing something for myself each day, even if it was just brushing my hair or putting my make-up on, it would help me to feel better.”

Helen also volunteered for a time for The Anthony Seddon Fund, based in Ashton, which provides mental health peer support and organised the Baton of Hope tour with the support of Tameside Council.

She said: “I’ve always followed their work and think it’s so important to help people to open up. I’m pleased to help share a message of hope, raise awareness of suicide and help people feel comfortable talking about it.”

Everyone across Tameside is urged to complete free online training to help support people who are feeling suicidal – it only takes 20 mins and could help you save a life [www.shiningalightonsuicide.org.uk/learn-to-save-a-life](http://www.shiningalightonsuicide.org.uk/learn-to-save-a-life)

For further information on local mental health support services see [www.tameside.gov.uk/helpinghand](http://www.tameside.gov.uk/helpinghand)



Executive Member Cllr Taf Sharif on the Baton of Hope walk



Tameside Civic Mayor Cllr Shibley Allam and Executive Leader Cllr Eleanor Wills at the Baton of Hope finale event.

20



**Helping Hand**  
support is available

# Open your heart and home and be the difference to a child's life

**THERE** are over 600 children and young people in Tameside who need a safe, loving place to call home.

Anyone over 21, with a spare room, patience, and a kind heart, already has the essential qualities to make a meaningful difference in a child's life.

Fostering children and young people within the borough helps provide stability during uncertain times, allowing them to remain close to familiar surroundings – including their schools, friends, and communities.

Tameside Council currently works with around 80 foster carers, but more are urgently needed. Residents are being called on to come forward and offer the love, care, and support that every child deserves.

The Council provides foster carers with full training, support throughout their journey, and an allowance. Fostering is open to people from all walks of life, regardless of age, sexuality, gender, marital status, employment status, nationality, ethnicity, religious beliefs, education, or social background.

Fostering can be flexible as there are various fostering opportunities to suit different schedules,

lifestyles, and employment commitments.

Types of fostering can include short-term, long-term, specialist, emergency and respite fostering. Tameside Council is part of Foster for Greater Manchester, a collaborative partnership between all 10 Greater Manchester local authorities, working together to increase the number of foster carers across the region.

For more information, call **0300 303 0321**, email [enquire@fosterforgm.com](mailto:enquire@fosterforgm.com), or visit [www.fosterforgm.com](http://www.fosterforgm.com)



Local foster carers with their family in Stamford Park.



## Adopted children help create agency's first TV advert



An adoptive parent writing a poem with a child they've adopted.

**Adoption Now has run their very first television advert with the help of adopted children and families.**

The advert, which aired in September on ITVx, aimed to encourage more people to apply to adopt by highlighting family life, and the fun, chaos and warmth that comes with the day-to-day caring of children.

A group of children wrote what family means to them, ranging from being nagged to tidy their bedrooms to having chippy teas and movie nights.

The advert showcased how a house becomes a home with family, and that the home can be not only a hub for noise,

mess and creativity, but also laughter, safety and love.

Around 100 children are currently waiting with Adoption Now for safe and loving homes. The children range from 0 – 8-years-old.

Adoption Now is looking for parents from all walks of life to meet the needs of their children. These can be parents who are single, in a couple, first-time parents, or already have a family, or different backgrounds and heritages.

Anyone considering adopting can find out more by visiting [adoptionnow.org.uk](http://adoptionnow.org.uk) or calling **01204 336096**.

# What's On



## Time for a Rhyme

Join the fun at rhyme time! Come along and join the library staff for singing, rhymes and stories. Sessions are suitable for children up to 4-years-old.

### **Mondays:**

**Hattersley Library, 2.15pm,  
Mossley Library, 2.15pm,  
Denton Library, 2.15pm**

### **Tuesdays:**

**Stalybridge Library, 10am,  
Hyde Library, 10.30am**

**Wednesdays: Ashton Library, 10am**

### **Thursdays:**

**Dukinfield Library, 2.15pm,  
Droylsden Library, 9.30am and  
10.30am**

## Lego Clubs

Join us and build fantastic Lego creations. Lego Club is aimed at children aged 7+ and their parents and carers. No need to book, just drop in.

### **Ashton Library**

**4th Tuesday of the month 4-5pm**

### **Stalybridge Library**

**1st Wednesday of the month  
3.30-4.30pm**

## Tea & Tales

Adults are welcome to join us to chat, share stories, listen to poetry & prose and have fun.

### **Hattersley Library**

**1st Thursday of the month  
1.30-2.30pm.**

**Tel: 0161 342 4000, option 5.**

### **Stalybridge Library**

**3rd Wednesday of the month  
10.30-11.30am.**

**Tel: 0161 342 4000, option 8.**

## Library Clubs

Book Time for Yourself. Free, friendly and relaxing weekly book clubs. Unlike standard readers' groups members do not need to read the book or short story before coming to a session making them pressure free.

### **Droylsden Library Club**

**1st Wednesday of the month  
10am - 11:30am**

### **Dukinfield Library Club**

**2nd Wednesday of the month  
10:30am - 11:30am.**

### **Mossley Library**

**Wednesday 10.30am - 12noon.  
Tel: 0161 342 4000, option 7.**

### **Dukinfield Library**

**Thursday 10.30am - 12noon  
(during Open+ hours).  
Tel: 0161 342 4000, option 4.**

### **Denton Library**

**Friday 9:30am - 11am.  
Tel: 0161 342 4000, option 2.**

Library Readers' Groups Friendly and informal discussions about a different novel every month. For more details, ask at your local library.

## Get Started With Learn My Way

Learn My Way Courses are free and simple courses for beginners. Come along to our free workshop to help you get started using your device and getting online.

### **Ashton Library**

**Every Tuesday 11am-12noon  
Tel: 0161 342 4000, option 1.**

## Knitting and Stitching Group

Come along to knit, crochet, chat, be inspired, share knowledge and ideas.

### **Droylsden Library**

**Every Friday 1.30-3.30pm  
Tel: 0161 342 5700.**

## Get Started With Online Job Searching

Come along to our free workshop to help you get started using online tools for job searching for help on CV writing and managing the search and application process. This session will help you build skills and confidence.

### **Ashton Library**

**Every Wednesday 11am-12noon  
Tel: 0161 342 4000, option 1.**

## Get Started With iDEA

iDEA offers free online courses to improve your digital skills; collect badges as you complete an award. iDEA is a scheme for the digital age similar to the Duke of Edinburgh Awards.

### **Ashton Library**

**Every Thursday 3.30-4.30pm  
Tel: 0161 342 4000, option 1.**

## Story Maker Sessions

Story Maker sessions are free, fun and interactive storytelling sessions aimed at children aged 0-4 years and their families.

Sessions will be held at the following libraries:

### **Hattersley Library**

**Tuesdays - 10-10.45am,  
1.15-1.45pm and 2pm-2.45pm**

### **Ashton Library**

**Wednesdays - 10am-10.30am  
Zoom session.**

### **Dukinfield Library**

**1.30-2.15pm**

For more information email [book.start@tameside.gov.uk](mailto:book.start@tameside.gov.uk) or call **0161 342 3443.**

[intameside.co.uk/whats-on](http://intameside.co.uk/whats-on)

# What's On



## Exhibitions

### Ashton Market Hall Gallery

Regular exhibitions by artists from the Tameside area.

### Portland Basin Museum

Victory! An exhibition marking 80 years since the end of the Second World War.

**Open Tuesday – Sunday**  
**10am-4pm, free entry.**

## Markets

### So Retro Vintage Market

**Sunday 2 November, 11am-4pm,**  
**Stalybridge Civic Hall.**



## Christmas

### Stalybridge Lantern Parade

**Saturday 15 November**  
**Stalybridge**

As well as the festive lantern parade through Stalybridge on Saturday, 15 November, each of Tameside's nine towns will host a festive event. The exciting community evenings will have music, food, and crafts, as they each turn on their Christmas tree lights.

**Friday 21 November**  
**Dukinfield**

**Saturday 22 November**  
**Ashton-under-Lyne, Denton**

**Friday 28 November**  
**Audenshaw**

**Saturday 29 November**  
**Droylsden, Hyde**

**Friday 5 December**  
**Hattersley, Mossley**

**Saturday 6 December**  
**Micklehurst**

More information can be found at  
[www.intameside.co.uk/whats-on](http://www.intameside.co.uk/whats-on)



[intameside.co.uk/whats-on](http://intameside.co.uk/whats-on)



## Discover App

Our Discover app showcases all that the borough has to offer. Split into three main sections, Shop, Eat and Do, businesses and organisations are showcased along with offers and events.

Discover is the only whole place app available and includes green spaces, places of interest, events, historic information, national and independent businesses, food and drink and other entertainment. There is also potential to connect shoppers to loyalty schemes at stores.

Anyone interested can download the app by searching for Discover in app stores.



# Helping Hand support in Tameside

## Support services in Tameside to help you manage the cost of living

If you're struggling with the cost of living, Tameside Council's Helping Hand service connects you to local support. Whether you need help managing money, improving mental health, finding housing support, or accessing food banks, we're here for you.

Get advice on energy savings, financial support, and employment opportunities—all in one place. Everyone needs a helping hand sometimes, and support is available when you need it.

Visit our Helping Hand webpages to find local services ready to support you.

[tameside.gov.uk/helpinghand](https://tameside.gov.uk/helpinghand)