



Local news and events from
Tameside Council

Here for you

#ProudTameside

ISSUE 97 | SUMMER 2025



What goes in each bin?



Non recyclable waste



Plastic bags



Dog waste and nappies



Aerosol cans



Plastic bottles



Glass bottles and jars



Aluminium foil



Cans and tins



Plastic food trays & yoghurt pots



You can now recycle plastic pots, tubs and trays



Newspaper and magazines



Paper



Cardboard



Junk mail



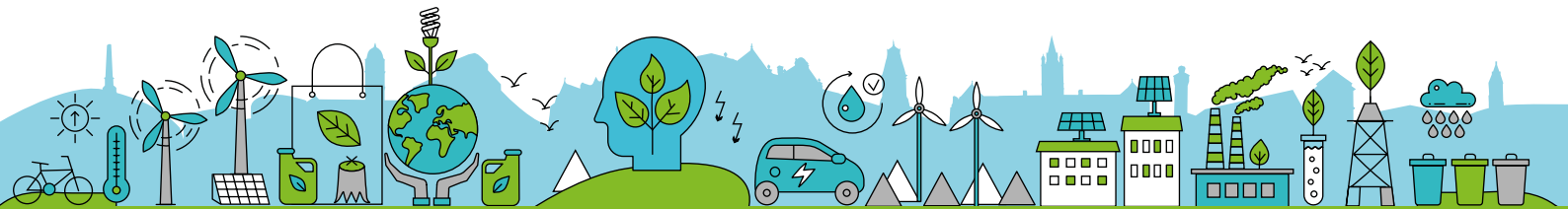
Plants, leaves and small twigs



Grass cuttings



Uncooked and cooked food



tameside.gov.uk/recycling

Check if they are eligible for 30-hours free childcare

Working parents with a child from 9 months up to 3 years are being encouraged to check if they are eligible for 30-hours free childcare.

To qualify, both parents or a lone parent must earn on average the equivalent to 16 hours per week at the National Minimum Wage or Living Wage. This will enable them to claim 30 hours free childcare over 38 weeks of the year.

Access to free childcare can begin from the term after a child reaches 9 months old.

To begin free childcare from September 2025, parents must apply and be issued with a valid eligibility code, and their child must have reached the eligible age on or before 31 August 2025.

To check if you are eligible, visit

CLAIM UP TO
30 HOURS
FREE CHILDCARE

Free childcare for working parents with a child from 9 months up to 3 years old

Don't delay, apply today



gov.uk/check-eligible-free-childcare-if-youre-working

Welcome to the summer edition of Here For You

Welcome to the summer edition of the Tameside Here For You

Summer is a time to enjoy the sunshine and scenery as we make the most of the good weather and get out and about to join events and activities. We've already enjoyed some fantastic events in Tameside, not least The Den Festival with Royal Exchange's touring theatre bringing a host of performances, alongside a series of top-class comedy acts and other entertainment, at Stalybridge Civic Hall. And there's more to come with a year-long programme of pilot events to capitalise on the extensive refurbishment of this magnificent venue that will become a key cultural and community hub.

We also have the ongoing Street Fest, which continues to go from success to success, amid other events, which you can find all about in this edition of Here for You on pages 19 and 20 and in our What's On guide on page 23.

We're also celebrating our amazing businesses in Tameside, and you can look back at all the winners and the glamour of our Pride of Tameside Business Awards

on pages 6 and 7. To support our town centres we now have two hours of free parking in our car parks, which you can find more about on page 4. And details about schemes to boost employment and the local economy, such as Routes to Work and Work Well, can be found on page 5. Our regeneration schemes to enhance our town centres continue to progress well with all the information on pages 8 and 9.

Elsewhere, other successes include Tameside being named as the best performing Council in the North West for taking action over flytipping (page 15).

I hope you have chance to enjoy everything that Tameside has to offer and have a splendid summer.



Cllr Eleanor Wills
Tameside Council Executive Leader



P11 Curzon Ashton FC pitched in to highlight the Open Up campaign



P14 Eco-grant Funds School Chicken Coop

Contents

Free Parking / New Mayor	4
WorkWell & Routes to Work	5
Pride of Tameside Business awards	6-7
Transforming Town Centres	8-9
Family Hubs	10
Domestic Abuse Support	11
Community Safety	12
Proud Tameside	13
Think Green - Eco-grant, Flytipping	14-15
Living Well at Home	16-17
Stay Cool, Stay Well	18
Culture in Tameside	19-20
Story Walks / Whit Friday Brass Band	21
Foster care and Adoption	22
What's On	23
Cost of Living Support	24

Two hours free parking in Tameside towns

Two hours free parking is now available in all Tameside Council run car parks.

The long-term offer of two hours of free parking Monday to Saturday before 6pm makes it easier and more convenient for people to visit and shop in the borough's town centres.

It covers all council run car parks across the borough, including in Ashton, Denton, Droylsden, Dukinfield, Hyde, Mossley and Stalybridge. The offer also includes the council run car parks at Tameside Hospital and the car park at Denton Wellness Centre.

You still need to get and display a ticket from the machine, even when parking for less than two hours. All you need to do is key in your car registration number, press the green button and the machine will provide a ticket to display in your car. The offer is among the very cheapest in Greater Manchester, making Tameside a very competitive place to visit, shop and do business.

It follows a full review of parking, which has involved extensive consultation with stakeholders, businesses and the wider community - including direct feedback from over 700 people and nearly 250 further comments on council social media. The review has also involved benchmarking with other areas and taking on learning and good practice.

The plan will require over a £1m investment from the council to cover lost revenue and support highway maintenance and improvement, but it is hoped the investment will be counterbalanced by a positive return in the form of town centre growth.

For further information see

tameside.gov.uk/parking



Tameside names new Civic Mayor



**New Tameside Civic Mayor
Cllr Shibley Alam**

Councillor Shibley Alam is the 50th civic mayor of Tameside.

She is not only the first woman born in Bangladesh to be a mayor of Tameside, but of any authority in the north of England.

Cllr Alam came to the UK when she was eight and later moved to Tameside, making it her home. She is married to Mr Mohammed Khairul Alam who will be her consort.

Cllr Alam was elected to Tameside Council in 2019 and represents Hyde Werneth ward. She is deputy chair of the health and adult social care scrutiny panel and a member of speakers panel (licensing) and the south strategic neighbourhood forum.

In addition, she is a trustee of Hyde War Memorial and Hyde Millennium Park, Croft Street.

Cllr Alam's chosen charities are Willow Wood Hospice, which provides specialist palliative and end-of-life care; the Dukinfield branch of the Women's Trust Fund, raising money for the Christie Hospital, and Hyde Bangladesh Welfare Association which promotes community cohesion and represents the needs of the entire Hyde community in accessing local services.

Her chaplain will be Mr Mohammed Abdul Hamid. The new Deputy Mayor of Tameside is Cllr Helen Bowden who represents Hyde Newton ward. She will be supported by her husband Leslie as deputy mayor's consort.



We know it can be difficult if you are struggling with your physical or mental health whilst in work or whilst looking for work. Our WorkWell team can help residents with guidance and advice to get back into work.

They are a really friendly team who hold weekly drop-in sessions across the borough so there's plenty of opportunity for you to pop along and meet them in person or have a chat.

The team has helped lots of residents like Kate, who self-referred to the WorkWell service after leaving her previous job due to health-related issues. Kate experienced severe anxiety and depression, which led to isolation and low confidence. One of the coaches helped her enrol onto a Level 3 Teaching Assistant course at a local college and provided support to signpost her to Support to Succeed for employment support and confidence-building interventions.

Kate is now completing a Level 1 course, after updating her CV with the support, and seeking voluntary placements in local primary schools. Kate's confidence has increased, and she is still in touch with a coach to help the smooth transition onto the advanced course. Kate is extremely grateful for the support, which had helped her make improvements in her mental health and outlook on the future.

The team has also supported Paul, who was referred via a local jobs fair. Paul, previously experienced in the finance sector, faced frustration from repeated interview rejections, leading to a decline in mental health. Living off his savings and worried about finances, he received support from one of the coaches who listened and provided guidance. Paul received support on interview techniques and coaching to boost his confidence and encourage alternative strategies. Paul also explored self-employment ideas with specialists in the hope of setting up his own business in the future. Successfully securing a job in the financial sector with a £32,000 salary, Paul's mental health improved due to regular income and ongoing support. The WorkWell coaches continue to assist with the transition into a new role.

Find out when the latest drop-in sessions are or talk to us so we can help you get back on track.

- Online tameside.gov.uk/workwell
- Tel: **0161 342 311**
- Email: WorkWell@tameside.gov.uk

Matching residents with disabilities with the right employers

The Routes to Work Scheme supports residents with a disability into employment with local businesses offering great benefits to both sides.



Natalie and Fran,
at Topsy Curvy

What's on offer for employers?

Natalie and Fran, at Topsy Curvy, would both 100% recommend using the Routes to Work scheme. It has supported them to give employees with additional needs an opportunity to get into work and excel within their team. They said:

“ We had a fantastic experience as the Routes to Work team provided us with lots of information at the beginning and had assessed the candidates – so we had a great understanding of who would work well within our team. ”

Mark Sidebottom at World Heat Cylinders is also one of the employers our brilliant Routes to Work team have been helping find and recruit employees with disabilities. Following the use of the service, there are now three residents employed with the company.



Mark Sidebottom
World Heat Cylinders

How do we support residents?

Clients like Zac and Kiran have also found work through the service. Zac has both Autism and Dyslexia, but he's not let that stop him. He has used both the Routes to Work and Tameside Futures teams at the Council to secure a job placement. The guidance from the team allowed Zac to build up his confidence, develop his CV and land a placement with IKEA. Kiran has received guidance to find a role suitable and convenient for her.



Zac at IKEA

For more information and to read about Zac and Kiran visit:
tameside.gov.uk/supportedemployment





Pride of Tameside

BUSINESS AWARDS



Hospitality, Retail & eCommerce Business of the Year
Duel Autocare Ltd



Large Business of the Year – Auxilium Services Ltd



Social Enterprise/Charity/CIC of the Year –
The Power of Resilience CIC

Dukinfield Town Hall was buzzing with excitement as the Pride of Tameside Business Awards returned for another unforgettable evening, shining a spotlight on the borough's most inspiring businesses and entrepreneurs.

This much-loved annual event, supported by key sponsors including Greater Manchester Business Growth Hub and Visual Architects, brought together local talent to celebrate innovation, resilience, and community spirit. Each award was proudly sponsored by a local business, reinforcing the strong network of support and collaboration that defines Tameside's business community.

A special thank you goes to Tameside College, Robertsons Facilities Management, and Brand Twelve, whose behind-the-scenes efforts helped make the evening such a success.

The ceremony was hosted by none other than Dame Sarah Storey, the inspirational Paralympian, who brought warmth and energy to the stage. With hundreds of guests in attendance, the event was a true celebration of the borough's enterprising spirit.

And the winners were...

- **Large Business of the Year**
Auxilium Services Ltd
- **SME of the Year** - Bennett Staff
- **Entrepreneur of the Year**
Elaine Sagar, Sunflower Group
- **Creative Business of the Year**
Visual Architects
- **Manufacturing/Engineering Business of the Year**
Dukinfield Metal Spinning Ltd
- **Construction/Property Business of the Year**
Diamond Decorators (UK) Limited
- **Childcare/Social Care Business of the Year**
Strive Academy
- **Tech/Digital Business of the Year** - Red Rock
- **Social Enterprise/Charity/CIC of the Year**
The Power of Resilience CIC
- **Green Impact Business of the Year** - RSK Group
- **Hospitality, Retail & eCommerce Business of the Year**
Duel Autocare Ltd

Celebrating Local Success: Pride of Tameside Business Awards 2025



Cllr Eleanor Wills, Tameside Council Executive Leader, Tameside Civic Mayor Cllr Shibley Alam and consort Mr Mohammed Khairul Alam, Harry Catherall, Tameside Council interim Chief Executive and Cllr Andrew McLaren, Deputy Executive Leader (Growth, Housing and Homelessness) all attended the Tameside Business Awards



Special Recognition Award - Lynn Kerfoot MBE



SME of the Year - Bennett Staff

A heartfelt congratulations also goes to Lynn Kerfoot MBE, recipient of this year's Special Recognition Award. Lynn's remarkable 50-year journey in the manufacturing industry at Newland Engineering Co. – rising from Secretary to Managing Director – has paved the way for women in a traditionally male-dominated field. Her leadership and mentorship continue to inspire.

Here's to another year of innovation, growth, and community pride in Tameside!



EXCITING NEW PLANS TO CONTINUE ASHTON TOWN CENTRE'S TRANSFORMATION

More exciting changes are coming to Ashton town centre, with a new masterplan now approved to guide its transformation. Building on the redevelopment of Market Square and St Petersfield through the Ashton Mayoral Development Zone (AMDZ), the plan outlines a bold vision for a vibrant, connected, and modern town centre.

Key proposals include:

- 466 new homes and 5,710 sqm of active ground floor space
- Retained retail and new uses for upper floors at The Arcades
- Redevelopment of key sites including the former bus station and leisure centre

The Council is working with owners of The Arcades and Ladysmith Centre to explore redevelopment, including potential demolition and remodelling. The plan addresses resident concerns around limited leisure, poor retail options, and a disconnected layout.

Goals include improving access, creating welcoming gateways, enhancing public spaces, and attracting more visitors. Backed by £500,000 from the GM Growth Locations programme, the Council is engaging with developers to shape delivery.

A new Ashton Regeneration Partnership will lead the transformation, uniting public and private efforts to create a city-style living environment that leverages Ashton's strong transport links.

Learn more at: tameside.gov.uk/AMDZ



BOLD VISION APPROVED FOR DROYLSDEN TOWN CENTRE

A bold new masterplan to transform Droylsden into a vibrant, green, and connected town centre has now been approved. Developed with public input and supported by £100,000 from Homes England and the GMCA funding, the plan focuses on sustainability, inclusivity, and economic growth.

Key proposals include:

- Reconnecting the marina and retail areas by reopening the historic Hollinwood canal branch with green, walkable routes.
- Revitalising public spaces like Droylsden Square and Villemomble Square with greenery, seating, and lighting for events.
- Improving pedestrian and cycling access across the A662 Manchester Road.
- Redeveloping key sites such as the Concorde Suite and Droylsden Shopping Centre to attract visitors and support local businesses.
- Delivering quick wins alongside long-term improvements.

The Council is also working with stakeholders including New Era and Cushman & Wakefield to explore development options, including the potential demolition and redevelopment of the Concorde Suite. An additional £163,000 from the Combined Authority Flexible Local Authority Grant Scheme will fund detailed planning and early public realm improvements.

For more information, visit:

tameside.gov.uk/droylsdentowncentre



HATTERSLEY REGENERATION PROJECTS BRING COMMUNITY BENEFITS AND LOCAL GROWTH

Hattersley continues to thrive thanks to major regeneration efforts led by Tameside Council, Onward Homes, and Homes England. Over the past year, the area has seen new homes, better public spaces, and stronger community support. The district centre is also being further developed, Maple Grove are working with Onward to bring forward the final development including an Aldi Discount Food Store, a Costa drive-through, and other additional Trade Counter Units. This is a major milestone in the overall regeneration of Hattersley.

Planning approval was granted in April 2024, and work is underway with construction expected to be completed in June 2026 followed by fit out by the occupiers to follow in Autumn 2026. What's happened so far:

- 161 new homes have been delivered, including extra care, affordable rent, and shared ownership options.
- Construction on more housing, including the Mottram Police Station site.
- £4 million investment in local infrastructure.

- Four new playgrounds have been completed, with a Multi-Use Games Area and Waterside Clough improvements starting this summer.
- A dedicated Work and Skills Coach has helped hundreds of residents:
 - Thirty-eight into jobs
 - 190 into training
 - 137 into volunteering
 - 786 supported towards employment
 - Hawthorns Primary School opened in 2024, offering 246 places for children with SEND.
 - Youth programmes like Beats and Bars and Hatts Chat and Giggles are engaging young people through creative activities.

Find out more at

tameside.gov.uk/hattersleyregeneration

WORK CONTINUES ON HOMES, SPACES, PLACES - TAMESIDE'S EXCITING NEW LOCAL PLAN

Local plans matter – Tameside's key strategic planning document will guide future development across the Borough for years to come. This is your local plan, and we are committed to making it match Tameside's ambition, vision and values.

Online and in-person, you have told us that your number one priority is to protect Tameside's fantastic green spaces and parks. We listened: Homes, Spaces, Places will raise the bar setting new standards for the provision of play spaces in new development.

The plan will bring forward new policies, restricting hot food takeaways, better regulating and managing HMOs and laying the foundation for future jobs and homes across our Borough.

If you want to tell us what you think, we would love to hear from you. We are particularly keen to hear from our local businesses to gather views on the current trading environment, as part of a wider town centre 'health check' and employment land review taking place over summer. Look out for the results and revised plan in November or go to our virtual exhibition space at tameside.gov.uk/homesspacesplaces.

If you would like to be kept informed of progress, please register at <https://forms.office.com/pages/responsepage> or via QR code:



Scan the QR code to
be kept informed

SHAPING DENTON FOR THE FUTURE

Work is starting on a fact-finding mission to help shape Denton's new Public Realm Strategy which will be part of the town's wider masterplan. Consultants Planit IE and Placed, alongside the Council's Strategic Growth team, will be engaging with residents, businesses, and stakeholders to explore improvements to public spaces, roads, and pedestrian areas.

The plans could mean upgrades to cycling and walking routes across the town centre. This strategy will guide how the initially awarded £4.5million from the allocated £16.7m Government funding announced in 2022 will be spent to enhance travel, services, and town centre spaces. The initial ideas will then be formed into proposals which will go out to the public for a more formal consultation later this year which will allow the team to gain everyone's views around the emerging proposals to ensure they reflect community needs and aspirations and key stakeholder aspirations and requirements.

Watch this space to find out more and have your say tameside.gov.uk/destinationdenton



Session expansions see children and parents reaping the benefits



An expansion in the variety of sessions at Tameside's family hubs has seen children and parents reaping the benefits, with the number of free activities and support groups offered almost doubling in the last year to 21 different types.

With main locations in Ashton, Droylsden, Stalybridge and Hyde, Tameside's family hubs have received a further 12 months of grant funding from the Department for Education, having gone from strength to strength with a 650% increase in unique service users from 2023 to 2024.

The hubs bring together access to early years' services, parenting, education, financial and mental health support for families with children, five days a week for a range of ages. Sessions include Baby Babble to develop speech and language skills and Little Explorers to learn through play, as well as groups offering breastfeeding and neonatal support.

Details about Tameside's family hubs can be found at tameside.gov.uk/FamilyHubs



Consultation approved for additional specialist centres

Tameside Executive Cabinet has approved a proposal for consultation to commence on 12 additional specialist centres within mainstream schools for children and young people with special education needs and disabilities (SEND), with the aim of increasing the number of places available within the borough in time for the new school year.

The Council is committed to ensuring that children across the borough can have a school place as close to home as possible which is able to meet their learning needs. The plan will increase the number of dedicated SEND places available within Tameside by 143 and will support pupils aged between 5–16 years old with education and health care plans (EHCPs). The plan includes a proposal to make up to 40 additional places available for pupils aged 16-19, with Newbridge Multi-Academy Trust extending the provision at Samuel Laycock School to 11-19 years old.

Changes will take place over two phases, with the first beginning in September 2025 for the first 12 schools and a second phase for a similar number of schools being planned for September 2026.

The places will provide tailored support for pupils with cognition and learning, communication and interaction, and social, emotional, and mental health (SEMH) needs.

tamesidelocaloffer.co.uk

Families could be eligible for savings when paying for childcare



Thousands of families across Tameside could be eligible for savings when paying for childcare for school-aged children.

The government's Tax-Free Childcare support can be used flexibly by parents to pay for childminders, after-school clubs, school holiday care or wraparound childcare for children aged 11 or under, or up to 16 if the child has a disability.

For every £8 deposited in a Tax-Free Childcare account, the government tops it up by £2 which means parents can receive up to £500 (or £1,000 if their child is disabled) every 3 months to use to pay for their childcare costs. This equates to financial support of up to £2,000 a year per child, or £4,000 if their child is disabled, towards the cost.

Tax-Free Childcare can be used alongside the free childcare hours for children aged 9-months-old, subject to eligibility. A full list of the eligibility criteria is available on [GOV.UK](https://gov.uk).



“I’m a policeman and I endured years of domestic abuse”



A POLICE officer has told how he endured years of controlling and coercive abuse from his now ex wife in the hope of encouraging other male victims of domestic abuse to seek help.

The 37-year-old from Tameside, who wishes to remain anonymous, suffered years of being belittled, emotionally and financially abused, harassed, spat upon and having his contact with his children restricted.

He has told his story to support Tameside Council’s Open Up campaign, which aims to raise awareness of the support available for male victims of domestic abuse. One in six men experience domestic abuse at some point in their lives but they are far less likely than women to tell anyone or seek help.

He said: “The main focus with domestic abuse is understandably on female victims but this unfortunately overshadows the fact that many men experience domestic abuse too – especially controlling and coercive abuse – to the point where they may not recognise themselves that they are victims.”

He told how after marrying and having children the abuse from his then wife got more and more regular.

“She made horrible comments and threats like “If you were a man...”, I was walking on eggshells all the time, if I didn’t meet her unrealistic expectations she would explode, screaming and spitting, threatening me, calling me names, weaponising the children and making herself out to be the victim.

“It was draining but it became normality, and I just got on with it. My main focus was being there for our children. But over time I got more and more miserable.”

The officer eventually moved out and sought help from the Bridges Partnership, where he started a support programme with two other men.

“It was really powerful and comforting to be with people who had been through the same. The programme gave me confidence in myself and also validation as a victim with the authorities. “Ultimately, I want other men to know they are not alone, they are not the only ones going through this and there is support for them.”

There is specialist support for all victims of domestic abuse in Tameside, no matter what gender, age or background, at bridgespartnership.org.uk or call **0800 328 0967**. In an emergency you should always call 999.



Cllr Taf Sharif, First Deputy (Population Health and Wellbeing) shows her support for the Open Up campaign alongside representatives from across local services and community organisations.



Football Club pitch in to support campaign

Curzon Ashton pitched in to highlight the Open Up campaign supporting male victims of domestic abuse.

The football team have helped to reach a broader audience and target local men and football supporters with the message that men experiencing domestic abuse are not alone and there’s support available.

The campaign was highlighted with beer mats in pubs, posters around gyms and GP surgeries, and online.

#openup



Cllr Teresa Smith, Executive Member (Children and Families) at the launch of the Just One Favour project

Workshop provides support to families

An innovative programme is aiming to support families affected by child exploitation and also raise awareness in the wider community.

Tameside Community Safety Partnership and Tameside Council's Complex Safeguarding Team commissioned and funded the Just One Favour project, working in partnership with Odd Arts creative group, to support families with lived experience of child exploitation and also produce a film to help prevent further children being exploited.

Odd Arts spent the initial weeks building trust with the group, which involved local families. Over four to five months, they worked consistently with the parents/carers, fostering meaningful discussions about systemic changes needed to support families better.

From identifying key issues such as the need for early support, and issues of blame and judgement, the team have worked on creating a safe environment. Following this progressive work, the group created a film about their experiences to raise awareness and prevent other families from facing similar challenges.

The film is a celebration of what the group means to those involved, the support the group provides, along with the group's five top asks to professionals working in this field.

For more information, please visit <https://oddarts.co.uk/child-criminal-exploitation/>
For support, please visit tameside.gov.uk/childabuse

Community Grant success in Tameside



Four events have been held across the borough to help select community groups to receive the Tameside Communities Grant Funds.

The events held in the North, West, South and East wards, invited community groups, residents and councillors to help vote which groups should be allocated funding.

The successful community groups received the funding to support their projects delivery over the next 12 months. Each group found successful for the funding were recognised for their commitment to bettering the community. Congratulations to all selected groups!

For more information, contact the team at: community.safety@tameside.gov.uk

Community groups celebrate their grants in Tameside



Bin crew praised for helping resident with dementia



A BIN crew who helped an elderly woman with dementia to get safely back home have been praised for their caring actions.

Tameside Council waste operatives Terry McManus, Regan Higgin and Warren Sunderland were out on their rounds in Droylsden when they saw the woman wandering in the street looking vulnerable.

The crew gently guided the woman back to her property and ensured she got safely back inside and had support.

A neighbour, who witnessed the incident, called out to the crew to thank them and then contacted the council to praise their actions.

She said that although she had commended the crew personally she wanted to “extend the compliment upwards to management in recognition of someone going above and beyond. She added they “showed sympathy, empathy and concern” for her neighbour’s welfare and she wanted to pass on her thanks.

Our bin crews and other frontline staff are our eyes and ears in the community and it is always so heartwarming to hear where they have gone beyond their normal roles to help someone.

Thank you and well done to the crew for your care and kindness with this vulnerable resident and thank you also to the neighbour who was thoughtful enough to contact us to compliment the crew and give well deserved recognition for their actions.

Harry’s outstanding contribution to public service



Harry Catherall MBE, Tameside Council interim Chief Executive

Warmest congratulations to Tameside Council interim Chief Executive Harry Catherall who has been recognised in the King’s Birthday Honours for outstanding contribution to public service.

Having started his career in the council as a 16-year-old apprentice, Harry returned as Chief Executive following an impressive public service career spanning almost 46 years.

He spent the first nine years of his career in Tameside and qualified as an accountant studying at Manchester Polytechnic three nights a week whilst holding down his full-time job.

Harry enjoyed another nine years at Stockport Council before joining Blackburn with Darwen Council in 1997 to help set up a new unitary council, playing a leading role in social services. He dedicated 22 years to Blackburn, with the last seven as their Chief executive.

Having completed 40 years’ service, Harry took a well-deserved early retirement, but the Local Government Association had other ideas. Harry was invited to provide interim Chief Executive support at St. Helens Council, which was followed by a similar opportunity at Oldham Council. Here, he helped the new political leadership kickstart an impressive journey of improvement which was recently acknowledged through winning ‘most improved council’ at the Local Government Chronicle Awards.

After three years at Oldham Council, Harry didn’t stop there - he agreed to join Tameside to do the same and is nine months into our improvement journey, already having made a massive positive impact.

Cllr Laura Boyle, Tameside Council's executive member for environmental services and neighbourhoods, joins pupils from Parochial Primary School at their green oasis.



Eco-grant Funds School Chicken Coop

Tired old hens used to living in battery cages will soon have a new home that's so plush it's been nicknamed Peckingham Palace.

The large coop is being constructed at Parochial Primary, Ashton, using a £1,500 grant from the Greater Manchester Combined Authority's eco-grants for schools scheme.

It's part of a small allotment where the school cultivates vegetables. The chickens project will support pupil's understanding and knowledge of where food comes from and the importance of reducing waste. The initial consignment of three chickens is due to arrive for the start of the new school year.

Tameside Arts Group Gets in the Groove with Solar Power

A new solar calculator launched by Green Economy (GE) provides residents and businesses with an impartial view of how much money and carbon solar power could save them.

It's free to use and can be found on the GE website: greeneconomy.co.uk/tools/solar-calculator

One Tameside concern already enjoying the benefits of solar power is Mossley carnival arts association Global Grooves. Their journey started after GE helped them secure a £5,000 grant for an LED lighting upgrade at their home at The Vale, Micklehurst Road.

Not only did it generate impressive annual savings of £11,117.83 and 20 tonnes of carbon, it also identified that Global Grooves had a large roof which was ideal for solar panels.

Their initial solar generation is already seeing real gains in energy reduction, and they're now looking to install further solar panels and exploring roof wind turbines as they progress towards becoming net zero by 2030.

Think Green and Bottle a Bargain at School Eco Refill Shop

Schoolchildren are creating a more sustainable future by running an Eco Refill Shop to encourage people to Think Green.

Milton St John's Primary School in Mossley is one of 25 schools taking part in the Greater Manchester pilot scheme.

It teaches pupils how to set up and operate a shop selling refills of household products such as body wash and hand wash. The shops open once a month and everyone from staff, pupils, parents and the wider community are encouraged to bring their own containers to refill.

The aim is to give young people the skills and tools to play a part in tackling the climate emergency and be part of the UK's low-carbon circular economy. It also teaches workplace skills and builds good habits.

The products are made in the UK, cruelty free, vegan, environmentally responsible, and affordably priced – ranging from £1.50 for 500ml of washing up liquid to £2.75 for a 500ml refill of body wash. There is also a selection of laundry liquid and fabric conditioner, hand soap, shampoo and hair conditioner.

Tameside Council's Think Green campaign aims to inspire residents and local businesses to join the journey to a cleaner and greener Tameside.

For more information on the school eco refill campaign, please visit:

gmgreencity.com/projects-and-campaigns/school-eco-refill-pilot

Milton St John's Primary School pupils operating their Eco Refill Shop.





Tameside best performing council in north west for taking action against flytipping

Tameside is the best performing council in the north west for investigating and taking enforcement action against flytipping.

Latest figures, published by DEFRA (Department for Environment, Food & Rural Affairs), show that in 2023/24 Tameside Council issued 236 fixed penalty notices for flytipping – more than anywhere else in the north west.

The council issued 279 fixed penalty notices in total for all waste offences including flytipping, littering and household duty of care – this is the second highest figure in Greater Manchester and the third highest in the North West.

At the same time, flytipping incidents in the borough reduced 34% from 4416 in 2022/23 to 2905 in 2023/24.

Tameside Council has waste enforcement and street cleaning officers out every day investigating and clearing flytipping and also holds regular days of action, as part of its Our Streets campaign to work with the community to help make the borough cleaner and safer.

Residents and businesses can also play their part by ensuring they always dispose of their waste responsibly and to check the credentials of any third parties they ask to remove their waste for them – always check their waste carrier licence, get a receipt and find out where they are taking the waste to.

You can check whether a waste carrier is licensed on the Environment Agency website at environment.data.gov.uk/public-register/view/search-waste-carriers-brokers

For further information on reporting flytipping and useful information to provide to help investigations see tameside.gov.uk/flytipping



Our Waste Enforcement and Flytipping teams

CCTV cameras installed in park

CCTV cameras have been installed in Victoria Park, Denton, as part of ongoing partnership work which has helped to reduce anti-social behaviour (ASB).

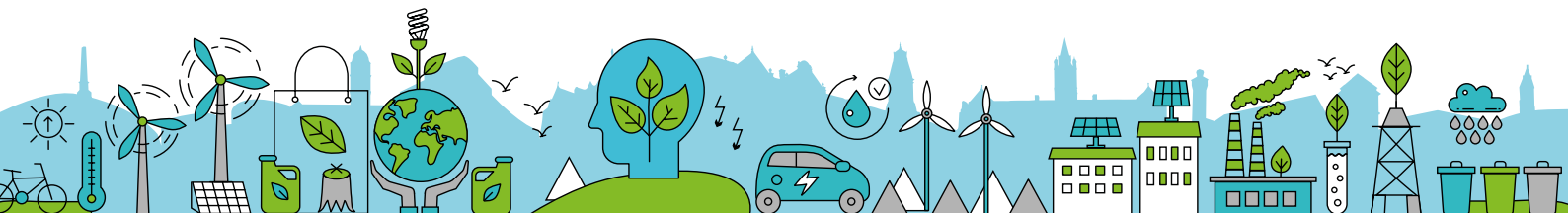
Tameside Council and Greater Manchester Police (GMP) have been working together to address community concerns relating to ASB, criminal damage and public order issues the park.

Their joined up approach has led to a 57% reduction in reported ASB incidents. There were also no crimes for public order, robbery or violence recorded during the reporting period of October to December 2024.

The work has led to the council's community safety and anti social behaviour (ASB) teams and GMP's neighbourhood policing teams recently winning the Place Based Problem Solving Award in GMP's Problem Solving and Prevention Awards 2025.

The new CCTV cameras will further build on this success, with the footage being shared in real time with the police as part of ongoing efforts to keep residents and park users safe.

For further information on how to report anti-social behaviour, visit tameside.gov.uk/What-is-Anti-Social-Behaviour.



Introducing the Early Support and Advice Hub



Alex shopping and in his flat

The Early Support and Advice Hub (ESAH) within Adult Services is a new team dedicated to supporting people to live a good life in the place they call home, doing the things that are important to them.

ESAH provide a response to new referrals into the service. Triage urgent and non-urgent work with people's strengths, the team make sure they receive personalised advice and support. Importantly, they explore when local support in people's communities and shorter-term support might be the right fit for them.

Independence, choice and control is at the heart of the hub so people can live the life they want. Alex, 68, from Dukinfield has recently been supported by ESAH and now feels much more confident at home in supported living.

Alex's journey with ESAH began in January with Reablement service's Community Care Officers

(CCOs) helping him to move into his new flat, a place where extra support is on hand if he needs it. The CCOs also helped source furniture, appliances, and supported with the move and getting registered with a new GP. Alongside this, the team helped him to gain confidence and skills with things like cooking, shopping and doing his own laundry.

This period of support was incredibly successful and will continue with a direct payment. This means a personal assistant (PA) will join Alex a few times a week to help him with shopping, cooking or even just popping out for a coffee with him. Alex will also be supported by his PA to explore groups and activities that are local to him.

If you live in Tameside and need social care support, residents can get in touch via The Community Gateway on **0161 922 4888 (Option 1)**.

You can find out more about Adult Services at tameside.gov.uk/adults and direct payments at tameside.gov.uk/directpayments



Cllr John Taylor, Executive Member (Adult Social Care and Inclusivity) with the ESAH team



Looking after someone can be tough but Tameside Carers Centre is here for you.

Tameside Carers Centre

Tameside Carers Centre is a service supporting carers in Tameside to get the right support at the right time. Wellbeing Advisors offer tailored information, advice, advocacy, and emotional support, including help with Carers Conversations, a way to see how the team can assist the person caring and those they care for.

Carers Week is an annual campaign raising awareness of caring and the support available to those who look after someone. The week is also an opportunity to highlight the challenges unpaid carers face and recognise their contribution to families and our communities.

Carers Michelle and Alan spoke about what a brew at Tameside Carers Centre does for them. Both care for their partners and urge others who look after a loved one to reach out for support too. Michelle says she really does look forward to coming to Tameside Carers Centre, it's a break away from her caring role where she has met new friends who understand her.

While Alan's wife doesn't need to access much support other than mobility issues, he values being able to connect with like-minded people. He encourages people who care for someone to access support sooner rather than later, before they reach a crisis.

You can listen to them talk about why this support matters to them on Facebook by searching 'Tameside Carers Centre' or scanning the QR code.



To mark Carers Week, Tameside Carers Centre also held an afternoon tea with the people they support. Over 115 carers enjoyed a lovely afternoon tea and a live

singer at the Village Hotel in Hyde. This was a chance to connect with others who look after someone, but many of those who attended were catching up as they had met at other events organised by the Carers team.

Drop-in support sessions run at Tameside Carers Centre from Monday to Friday (excluding Wednesdays) from 10am to 2pm. Booking is not essential but if you prefer to let them know you are visiting, please get in touch. Carers can connect with others through coffee mornings which are hosted on the last Tuesday of every month and regular events are organised for a well-deserved time out.

The centre is based in the People Place at Tameside One, Market Place, Ashton-under-Lyne, OL6 6BH. Find more information at tameside.gov.uk/carerscentre and connect with them on Facebook for regular updates by searching 'Tameside Carers Centre'.



Scan the QR code to listen to Michelle



Scan the QR code to listen to Alan

tameside.gov.uk/carerscentre



Working Together: Support in the Heart of our Communities



Services showcasing local support at the community event



Tameside Adult Safeguarding Partnership Board (TASPB) hosted a community event at St Martin's Church in Droylsden.

Residents were able to browse support and talk in-person to Tameside Council's Adult Services, Tameside Family Hubs, Greater Manchester Police, Greater Manchester Fire and Rescue Service, Active Tameside, Age UK, Jigsaw Homes and lots more.

Every adult has a right to live free of fear, be treated with dignity and have their choices respected. This event was linked to World Elder Abuse Awareness Day (WEAAD) and aimed to raise awareness of the support available to keep people and their families safe and well.

TASPB recognise that the abuse of adults is a reality. The board do not believe it is acceptable and are committed to partnership working to prevent and stop both the risks and experience of abuse or neglect.

Partner organisations include Tameside Adult Services, the police, fire service, NHS GM, Pennine Care NHS FT and more. Find out more about the board at tameside.gov.uk/taspb

If you're concerned about someone 18+ in Tameside being abused, neglected or self-neglecting, you can report concerns through our Community Gateway on 0161 922 4888. Always ring 999 in an emergency.

Find out more about what abuse, neglect and self-neglect can look like at tameside.gov.uk/taspb/concerns

Be Inspired at Birch Lea Park

Set in the heart of Hattersley, Birch Lea Park offers modern accommodation for over 55s, with a tailored level of on-site care for those who need it.

The modern building, managed by Onward Homes, includes a communal garden area, accessible ground floor rooms and spacious wet-room style adapted bathrooms, as well as guest accommodation.

Residents can enjoy a private games room with a snooker table and adjoining kitchen facilities, while the wider Hattersley community is also welcome to use the on-site hair salon, beauty therapy room, and bistro. Supermarkets, a chemist, transport links and the Hattersley Hub are only a short distance away.

Birch Lea are currently inviting applications from local businesses to run the on-site bistro at Birch Lea Park. If you're considering taking the next step with your hospitality business, they can offer attractive terms to support your growth.

A range of one and two-bedroom flats are still available. If you know someone over 55 who would benefit from calling Birch Lea Park home, or would like to enquire about the bistro opportunity, please email birchleapark@onward.co.uk.



Birch Lea



Birch Lea Show Room



Birch Lea Kitchen

Stay Cool, Stay Well



The summer of 2022 was a wake-up call. With Greater Manchester temperatures soaring to nearly 37°C—far above the usual summer highs—many of us felt the heat in more ways than one. While sunshine can lift our spirits, hot weather can pose serious health risks well before temperatures reach extreme levels. In fact, impacts on health can begin when temperatures climb above 25°C, especially for people with long-term conditions or those living alone. But hot weather doesn't have to catch us off guard. A little know-how goes a long way.

Some people feel the effects of hot weather more than others. That might include:

- Anyone living alone or in a care setting
- Older people (65+) and very young children
- People managing long-term health conditions like heart or breathing problems, diabetes, or dementia
- Those taking several medications, especially ones that affect hydration or body temperature
- People with limited mobility or who find it harder to stay cool
- Anyone who spends a lot of time outdoors—whether for work, exercise, or leisure

Want more advice? Search online for “Beat the Heat UKHSA” to find trusted tips from the government’s official campaign.

Follow these simple tips to beat the heat



Avoid midday sun

Stick to shade, use SPF 30+, wear a hat.



Check your medication

Some medications can increase heat sensitivity. Ask your GP or pharmacist if yours might.



Dress safe

Wear light-coloured, breathable clothing.



Keep your cool indoors

Close windows and curtains during the day and open them at night when it's cooler.



Stay hydrated

Dehydration can sneak up on you. Drink plenty of water and limit caffeine & alcohol.



Cool your skin

Use damp cloths, splash water, or take a cool shower.



Cool down

Not sure where you can cool down? Many local libraries, community centres, and cafes can offer a break from the heat.



Know the signs

Dizziness, confusion, or cramps? You could be overheating. Rest, hydrate, and cool down.



Check on others

Look out for friends, family, and neighbours and consider asking someone to check in on you.

CULTURE

IN TAMESIDE

The Den Festival lit up Stalybridge

with stories, creativity, music, and theatre magic

Throughout May, Royal Exchange's touring theatre, the Den Festival brought a vibrant, exciting, and packed programme of activities to Stalybridge.

The Civic Hall was transformed into a hub of creativity and community, kicking off a month-long celebration of arts, culture, and connection.

The opening weekend was packed with events, from circus skills and interactive theatre to live music and storytelling. Families enjoyed a calm and creative Saturday morning with clay-making and self-celebration, while the afternoon brought the pulse of Afro-Brazilian drumming and powerful community theatre with No Such Thing as Ordinary.



Cllr Leanne Feeley, Executive Member (Lifelong Learning and Culture) Executive Leader, Cllr Eleanor Wills and interim Chief Executive, Harry Catherall at the Den Festival



IN TAMESIDE

Throughout May, The Den continued to offer something for everyone. Highlights included artist workshops, youth performances, Shakespeare adventures, and hands-on sessions like costume design and instrument exploration. Local young voices shone in Fresh Voices and Best Mates, Top Bins & Venga Venga, a joyful showcase of short plays by Tameside schoolchildren and writers.

The festival wrapped up with bold performances like Shakin' up Shakespeare! and HER Productions' reimaging of The Taming of the Shrew. Councillor Leanne Feeley praised the festival's spirit, calling it "a fantastic cultural celebration." The Den truly brought Stalybridge together through creativity and shared stories.

Next on the menu for the Civic Hall is a year-long programme of pilot events, following extensive refurbishment works including a new roof and internal upgrades. These improvements are part of the Stalybridge Capital Regeneration Programme, aimed at revitalising the town's cultural quarter and heritage assets.

The work was carried out to help make the space a more flexible venue for markets, festivals, theatre performances, and exhibitions. A long-term plan is in progress to secure the Hall's future as a key cultural and community hub, but the pilot events will help test the potential of the space and give residents and visitors alike a chance to experience some brilliant new cultural events.

More details on the event series will be officially announced in the coming weeks but will feature fun packed activities for families as well as Candlelit Concerts, Artisan Markets and so much more.

Watch this space! intameside.co.uk



Bringing a feast of fun

The much-loved Street Fest made its grand return in April and will continue throughout the summer and autumn bringing a fun-filled evening of food, music, and entertainment to Armentieres Square.

Since its launch, Street Fest has become a must-visit event, drawing crowds with its unbeatable mix of live music, tasty street food, and a buzzing atmosphere. Not only has it brought the community together, but it's also boosted local businesses and added to the town's incredible sense of pride.

Running from 5-9 pm on the second Friday of the month, Street Fest will turn Stalybridge into a lively hub of activity. There will also now be an indoor market taking place inside the Civic Hall for the events with even more traders on offer.

Don't miss out—get the dates in your calendars and join the fun! For full event details and dates, visit intameside.co.uk/StalybridgeStreetFest.



CULTURE

IN TAMESIDE

Key Dates



Stalybridge Civic Hall

Programme of Events 2025-26

Friday 8 August 2025:

The world premiere of Alicia's Amazing Adventure to Find the First Black Britons.

Friday 19 September 2025:

Global Grooves debut their new puppet at the Tameside Beer Festival.

Friday 3 October and Friday 5 December 2025, Wednesday 8 March 2026:

By Candlelight concert series in the Civic

December-January 2025-26:

The National Theatre in partnership with Cultural Services presents: Let's Play in The Civic.

Sunday 1 March 2026:

A celebration of dance in Tameside and beyond; coming Spring 2026.

www.intameside.co.uk



Funded by
UK Government

Tameside
Metropolitan Borough

IN TAMESIDE

**GREATER
MANCHESTER**
DOING THINGS DIFFERENTLY

20

Creating the story walks.



Story walks offer a brilliant new way to discover Chadwick Dam

With the launch of ten brand new story walks and signage created by the local community and artists, people of all ages are invited to explore and enjoy Chadwick Dam like never before.

Chadwick Dam is a hidden gem, nestled between Stamford Park boating lake and Tameside General Hospital.

The local community have been working with artists and Ridgehill Enterprises on a series of projects organised by Tameside Council's Culture and Public Health teams using funding from the Chadwick Dam Activation Project via the Mayor's Challenge Fund.

School children from Silver Springs Primary Academy and Inspire Academy worked with local storyteller Simon Sullivan to write and record six imaginative Tales of Chadwick Dam. Locally based 2 Boards & A Passion theatre company co-created relaxing story walks for wellbeing with Performing Arts students at Ashton Sixth Form College. They also recorded reminiscence story walks with Chatty Cafe friends (St George's, Stalybridge) capturing childhood memories of post-war Tameside.

The story walks are an imaginative way to enhance your wander at Chadwick Dam. Listen by scanning the QR code when you get there or go online before or after your visit at intameside.co.uk/discoverchadwickdam.



Cllr Leanne Feeley, Executive Member (Lifelong Learning and Culture) with the bands



Tameside Civic Mayor, Cllr Shibley Alam at the Brass Band competition



Brilliant brass at its best

Fine weather, welcoming crowds and tuneful talent led to fantastically successful Whit Friday Brass Band Contest.

A fabulous 50 bands took part in the much-loved event on 13 June, with Foden's band being named the overall winners. Another highlight for this year was Stalybridge Celtic providing the newest contest venue, which proved popular with both spectators and bands alike.



Tameside Foster Carer's only regret is not fostering sooner

Join the
FOSTERING FAMILY
in Tameside



Dave Atkins

FOSTER carer Dave Atkins has fostered over 70 teenage boys over a period of 35 years and as a result has built his own fostering family.

Dave Atkins, 77, who lives in Audenshaw is a single male, who up until a couple of years ago worked full-time running his own joinery business whilst fostering for Tameside Council full-time.

Dave explained how in the beginning fostering had never even crossed his mind until he began supporting a young boy who worked a Saturday job at Dave's DIY shop and had been fostered up until the age of 16 years old.

Dave said: "This made me think about it because the lad said, 'where would I be without you?' I was worried and said I can't because I'm a single male, but I saw another advert after that and thought why not I'll go for it, I've got nothing to lose."

Dave added: "It was the best decision I'd ever made in my life, and I've really enjoyed it, I've had some fantastic characters. Even those that have been a bit troublesome, they all have good points, and we all keep in touch."

"You get one or two problems but that's part of life, you get challenges in everything you do. Once you've solved the problem it helps you bond too.

"We also have fantastic social workers, who I can phone and ask for help. I've never been left alone with any problem, and we've got through it as a team!

"Our fostering family is a great community and there's always someone there that's had a similar problem to you, as other foster carers have lent on me for support when they've had problems."

Dave chose to foster teenage boys as he wanted to continue to run his business full-time, so this arrangement suited his lifestyle, schedule, and environment.

Even though Dave started his fostering journey as a single male with no biological children of his own he is now known as, 'dad', 'uncle', 'godparent' and 'grandad'.

Dave said: "Indirectly though they've all helped me so much they've turned my life around."

To anyone considering fostering or asking a question Dave said: "My fostering days are sadly coming to an end, but my only regret is I didn't start earlier. You won't lose anything by making an enquiry, go for it and it might be, like me, the best decision you've ever made, and I really mean that."

Dave rounded off his fostering journey story by saying: "There's something every day that makes me proud of what they've done, and the greatest thing is seeing them smiling."

Anyone can foster so long as applicants are 21 years or older, have a spare room and can offer a safe and loving home.

Anyone who has been inspired to enquire by Dave's story please get in touch by calling 0300 303 0321 or email enquire@fosterforgm.com or visit fosterforgm.com/tameside



Adoption podcast hits major milestone

A podcast set up by a local agency is celebrating this week as it hits 30,000 listens.

Adopter Stories by Adoption Now, which launched in April 2021, is one of the first of its kind, aiming to help people thinking about adoption to hear real life stories from real life adopters.

The series highlights how no two adoption journeys are the same as it talks honestly about the challenges that people face during the adoption process but also all the highs too.

There are now around 75 episodes available to listen to. The podcast has now also started monthly extra-time episodes which bring people more about what's

going on behind the scenes, important dates, and much more.

This major milestone comes at an unprecedented time for adoption as the gap between the number of children needing adoption and the number of families coming forward to adopt is widening, meaning many children are waiting longer for their forever homes.

Adoption Now is urging anyone who thinks they might be able to give a child a safe and loving home to listen to Adopter Stories by Adoption Now to find out more at adoptionnow.org.uk/podcasts

You can contact Adoption Now on their website adoptionnow.org.uk or call **01204 336096**.

What's On



Exhibitions

Ashton Market Hall Gallery

Regular exhibitions by artists from the Tameside area.

Guided Walks

Millbrook Heritage Trail:

Sunday 17 August, 12noon – 4pm.

Hike to the Pike and Back:

Sunday 28 September, 9.30am – 4pm.

Tameside History Club

All talks take place at 2pm at Tameside Local Studies and Archives Centre, Cotton Street, Ashton, and via Teams. To book your free place email archives@tameside.gov.uk or call 0161 342 4242 (Tuesday to Thursday 10am to 5pm and Saturday 10am to 1pm).

Voices of Kosovo in Manchester (VOKIM)

Wednesday 17 September, 2pm.

The British Cotton Industry and the many hands that made it a success.

Wednesday 15 October, 2pm.

Fairfield Moravian Settlement

Wednesday 3 December.

Book Trust Story Time

Free story and craft sessions. Check times and places at your local library.

Free Business Networking and Drop-in

Last Thursday of the month, 4 to 7pm, at Ashton Library. 0161 342 2031 or email employmentandskills@tameside.gov.uk

Build a Business 1-2-1

Ashton Library every Thursday morning and on the first Tuesday evening of every month for a chat. Call in or visit tamesidelibraries.eventbrite.co.uk

Digital Skills Support for the Over-65s

Call 0800 048 7642 to book or just drop in. Every Tuesday, 11am to noon, at Stalybridge Library, Trinity Street.

DJ Sessions

Free weekly DJ workshops for people aged 18 to 25 every Friday at the 4C Community Centre, (12.30 to 2.30pm). Call 07943 820 153 or 0161 806 0879 or email projects@reformradio.co.uk

Droylsden Library Club

Fun and friendly talks and workshops on a range of topics. 10.30 to 11.30am at Droylsden Library on the first Wednesday of each month.

Dukinfield Library Club

Fun and friendly talks and workshops on a range of topics. 10.30 to 11.30am on the second Wednesday of each month.

Exploring Stalybridge

New three-part podcast to help people connect with nature.

<https://anchor.fm/operation-farm>

Family History Help Desks

Every Tuesday, Wednesday, Thursday and Saturday, 10am to 1pm. 0161 342 4242

Get Started with iDEA

Every Thursday (3.30 to 4.30pm) at Ashton Library, 0161 342 2029.

Get Started with Learn my Way

Every Tuesday (11am to noon) at Ashton Library, 0161 342 2029.

Get Started with Online Job Searching

Every Wednesday (11am to noon) at Ashton Library, 0161 342 2029.

Glorious Gorse Hall

Calming heritage and nature audio walk for families which encourages you to slow down and enjoy fresh air and exercise. To download the audio and accompanying maps visit www.2baap.co.uk/glorious-gorse-hall

Knitting and Stitching Group

Every Friday 1.30 to 3.30pm at Droylsden Library, 0161 342 5700.

Lego Clubs

First Wednesday of each month at Stalybridge Library, Trinity Street, 3.30 to 4.30pm, and the last Tuesday of each month at Ashton Library, Market Place, 4 to 5pm.

Library Readers' Groups

Friendly and informal discussions about a different novel every month. For more details, ask at your local library.

Tea and Tales (Reading Friends)

First Thursday of the month (1.30 to 2.30pm) at Hattersley Library, Hattersley Hub, Stockport Road – 0161 342 4000, option 5; and third Wednesday of the month at Stalybridge Library, Trinity Street (10.30 to 11.30am) – 0161 342 4000, option 8.

Time for a Rhyme

Rhymes, singing and stories for children aged four and under. Ashton Library, Tuesdays, 2pm; Denton, Thursdays, 2.15pm; Droylsden Library, Thursdays, 9.30am and 10.30am; Dukinfield Library, Thursdays, 2.15pm; Hattersley Library, Mondays, 2.15pm; Hyde Library, Tuesdays, 10.30am; Mossley Library, Mondays 2.15pm; Stalybridge Library, Tuesdays, 10am.

Markets

Hyde Artisan Market

First Saturday of every month (March to December). Market Square between 9am and 3pm.

Farmers' Market

9am to 2pm on the last Sunday of every month at Ashton Market.

Table-top Market

Every Sunday, 9am to 2pm, at Old Cross Street car park.

intameside.co.uk



Discover App

Our Discover app showcases all that the borough has to offer. Split into three main sections, **Shop, Eat and Do**, businesses and organisations are showcased along with offers and events.

Discover is the only whole place app available and includes green spaces, places of interest, events, historic information, national and independent businesses, food and drink and other entertainment. There is also potential to connect shoppers to loyalty schemes at stores.

Anyone interested can download the app by searching for Discover in app stores.



Helping Hand support in Tameside

Support services in Tameside to help you manage the cost of living

If you're struggling with the cost of living Tameside Council's Helping Hand service connects you to local support. Whether you need help managing money, improving mental health, finding housing support, or accessing food banks, we're here for you.

Get advice on energy savings, financial support, and employment opportunities—all in one place. Everyone needs a helping hand sometimes, and support is available when you need it.

Visit our Helping Hand webpages to find local services ready to support you.

tameside.gov.uk/helpinghand