

TASPB STRATEGIC BUSINESS PLAN 2025/28

Tameside Adult Safeguarding Partnership Board – What we do ...

Our overarching aim is to help and safeguard adults with care and support needs to ensure these adults are free from abuse and the fear of abuse. TASPB has a role to ensure Safeguarding Adults is everybody's business and in doing so must apply 3 statutory functions as defined in the Care Act 2014:

- Publish a Strategic Plan
- Publish Annual Report
- Commission Safeguarding Adult Review

How do we do this?

Governance & Accountability

- Subgroups and task-and-finish groups aligned with strategic objectives.
- Regular progress reviews and risk assessments.
- Annual report to reflect effectiveness and outcome

Strategic Objectives Priorities

Exploitation

We will work with Partner Organisations in Tameside to protect those adults who have care and support needs from exploitation.

Support to Adult Carers

We will promote the work of Partner Organisations in Tameside to support Adult Carers to continue to provide and maintain dignity in care and quality of life for adults with care and support needs

Adults who Experience Multi-Disadvantage

We will demonstrate that there are strong cross-sector partnerships to respond to tackling multiple disadvantage and improving outcomes to prevent Adult Abuse in this cohort of people.

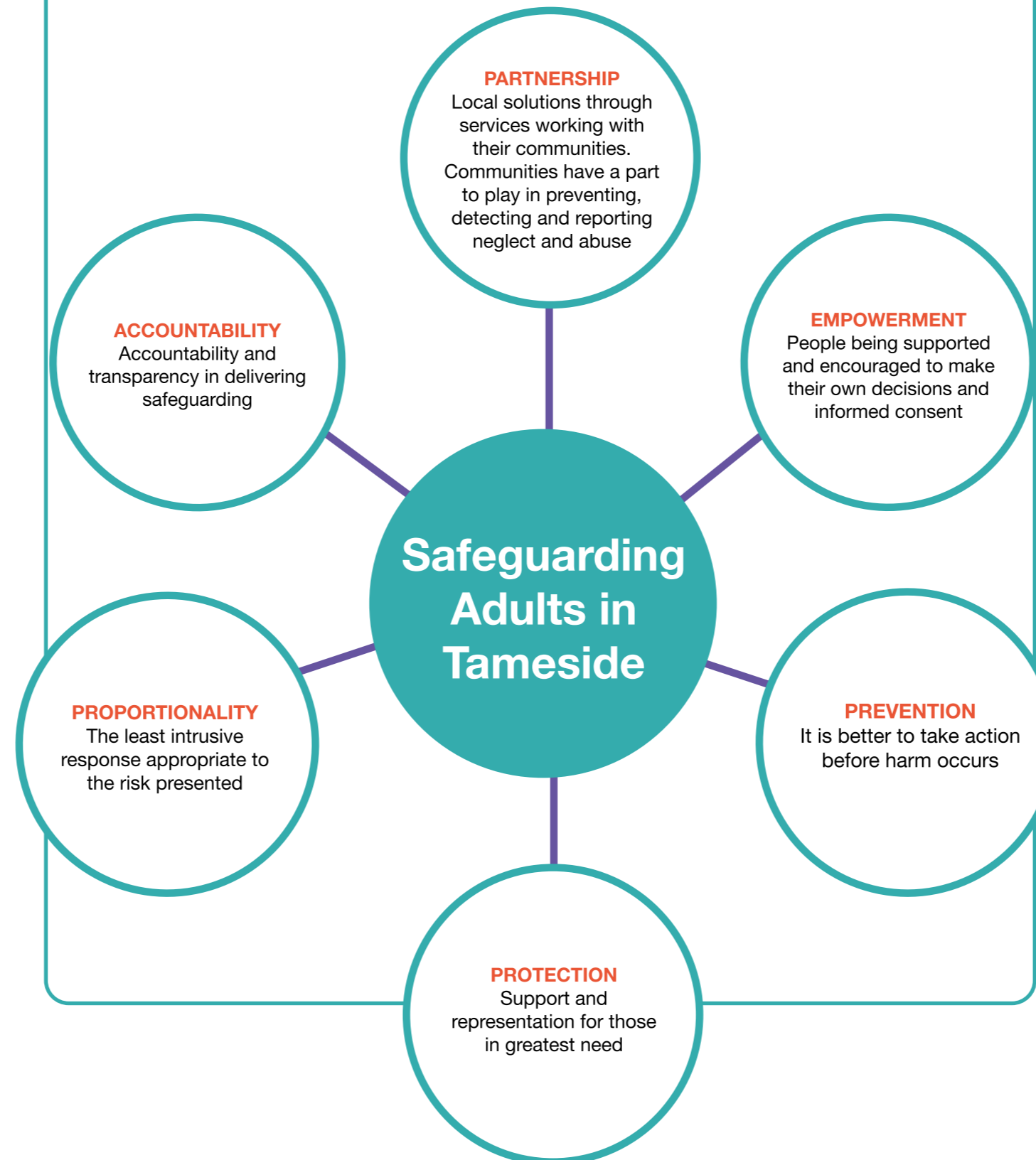
Homelessness and Rough Sleeping

We will have assurance that local safeguarding arrangements and partnerships adequately protect adults with care and support needs who may be vulnerable to abuse or neglect (including self-neglect) and are homeless.

Principles

Included in The Care Act 2014 are 6 Principles of Safeguarding, these are a core set of standards for Partner Organisations that underpin the Safeguarding Adult Work.

We strive for these Principles to be applied and seek assurance that this practice is adopted.



What are TASPB going to do to respond to our Strategic Objectives Priorities in 25/26?

Action	Why are we doing this?	Progress	Completion date
Establish an Exploitation subgroup to oversee the TASPB Action plan in response to Exploitation to :- <ul style="list-style-type: none"> • Identify and promote clear pathways • Implement a training program for Practitioners • To raise awareness in the Community of the signs and symptoms of exploitation 	TASPB are assured that Adults at risk of exploitation are identified and have clear pathways to access support to protect them from abuse.	In progress	March 26
Organisations promote the Carers role to identify and support more people who care for family members	TASPB have assurance that organisations provide information and resources to help carers manage their role and access timely support.	In progress	March 26
TASPB work with Carers to learn from lived experience and promote best practice to enhance support to Adult Carers in Tameside	Carers have access to the right support at the right time to continue to provide and maintain dignity in care and quality of life for adults with care and support needs.	In progress	March 26
TASPB Self - Assessment Audit is completed to identify transitions across services to support adults who experience multi-disadvantages	TASPB have assurance Adults who experience multi-disadvantage are aware of and have access to Pathways to the right services for them at the right time to prevent harm occurring	In progress	March 26
TASPB have assurance organisations promote pathways and flexible responses to assessments, housing, and access to specialist accommodation.	Safeguarding arrangements provide adequate protection for people who are homeless and rough sleeping in Tameside.	In Progress	March 26