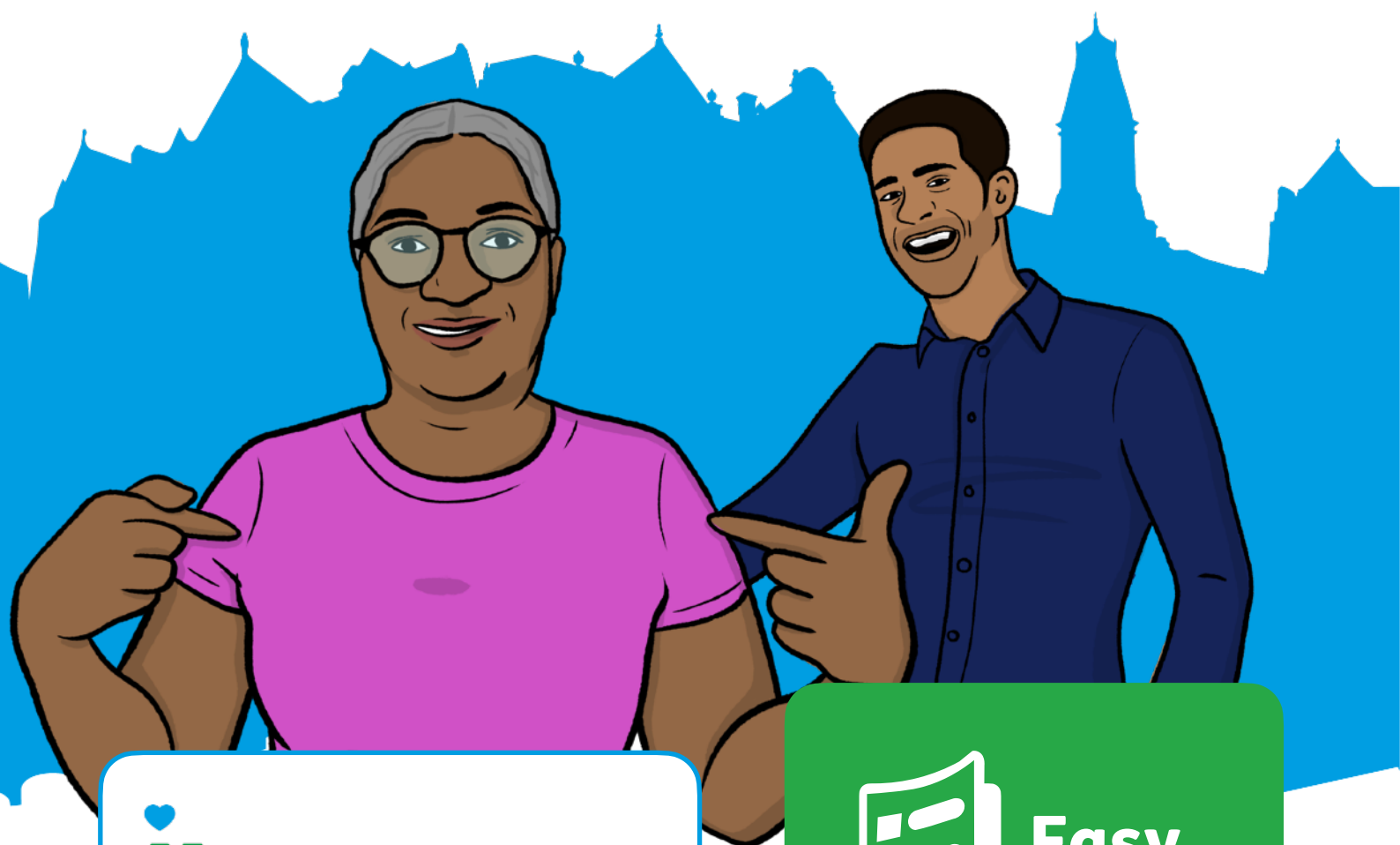


Tameside Adult Social Care Plan

2024 to 2027



LIVING WELL AT HOME



**Easy
Read**

Easy Read



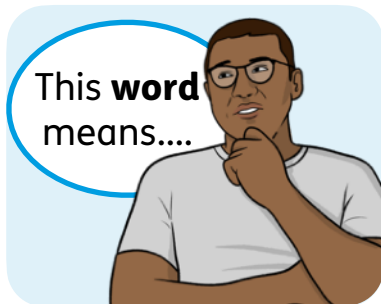
This is an Easy Read version of some information. It may not include all of the information but it will tell you about the important parts.



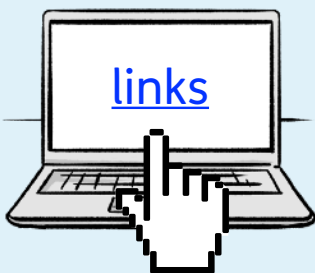
This Easy Read booklet uses easier words and pictures. Some people may still want help to read it.



Some words are in **bold** - this means the writing is thicker and darker. These are important words in the booklet.



Sometimes if a bold word is hard to understand, we will explain what it means.



Blue and underlined words show links to websites and email addresses. You can click on these links on a computer.

What is in this booklet

About this plan.....	4
Listening to people.....	5
Together we agreed	7
What is important to you	8
What we are going to do	9
What difference will this make	15
What do you think?.....	22

About this plan



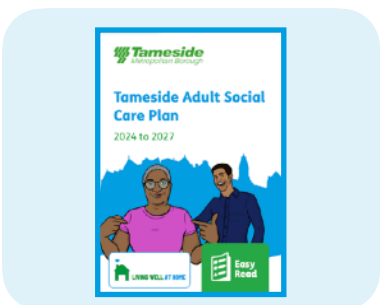
Tameside Metropolitan Borough Council has written this plan for our **adult social care** services.



Adult social care is the help and support some adults need to live independently.

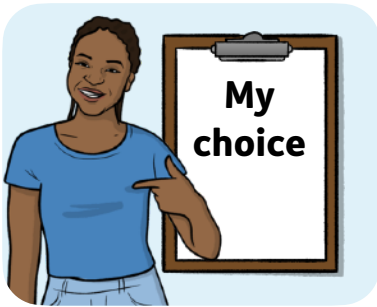


People might need social care because of their age, illness or disability.



This plan explains how our adult social care services will help people in Tameside.

Listening to people



Everybody should be involved in choices that affect their lives.



We listen to what people say about what matters to them.



This includes what support you need to live well in the place you call home.

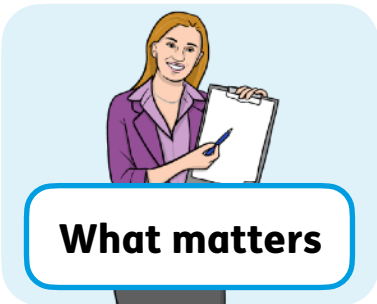
Co-production



Co-production means people are in control of planning the support they get.



We also want you to be involved with the co-production of our adult social care services. This makes services better for everyone.

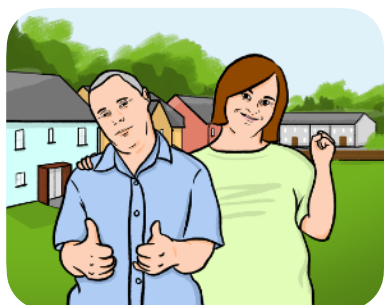


This will help to make sure that we work on the things that matter most to people.

Together we agreed



We want people to live happily in the place they call home, with the people and things they love.



We want to help people be part of their local areas, doing things that matter to them.



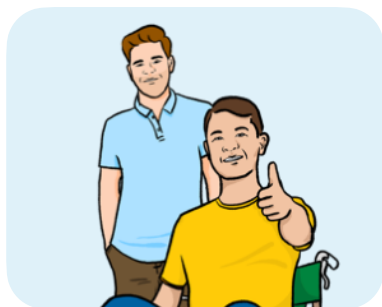
Our services will help to make sure that people can do this.

What is important to you



Our plan for adult care wants to put people first.

We asked people how they thought our adult social care services could be better. People said things like:



- Giving more help to people who are already using services.

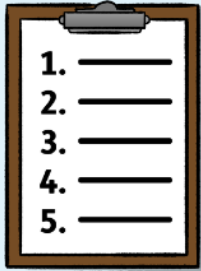


- Arriving on time to care for people.



- Calling to check if people living alone need any help.

What we are going to do



You told us there are five main areas that are important to you.



The next 5 pages explain more about the things we are going to do to make things better.

1. Information

We will:



- Give people the information about their choices, to help them decide what they want from their care.



- Give people information that is up-to-date and in ways that are easy for them to understand.



- Let people know about local activities and ways to feel happy and healthy.

2. Living independently

We will:



- Help local groups.

We will not just give them money, but also help them by giving them a place to meet, or sharing what we know.



- Make sure people are safe and happy in their homes.

We will make sure they have the equipment they need to live well in their homes.



- Work with other groups to help people meet and do fun things together, as well as learning or working.

3. Very good services

We will:



- Give people more choice over places they can live independently.



- Make sure that Carers can take breaks at the right time for them.



- Support people and their families to find good care homes, if they need them.



- Work to improve care homes.



- Listen to what you say and keep trying to do better.

4. Working with others

We will:



- Work with others to give you the best help.



- Work with other organisations to find better ways to help you speak up about your care.



- Listen to people, their families, and Carers to make sure they are in control of planning the support they get.



- Help people know what to do if things get bad, like if their health gets worse.



Fast

If there is a problem, we will act fast.

5. People who provide care and support

We will:



- Make sure the people who help you are good at their job and understand you.



- Make it easy for people to apply for care jobs and write a new plan for training people to do their job well.

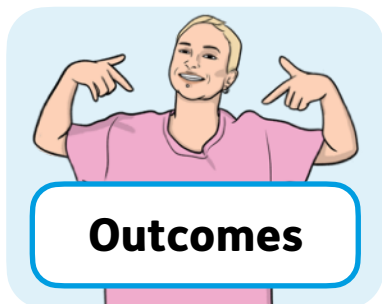


- Make sure our staff know that everyone is different and work on the things that matter to them.



- Make sure all social care staff who come to your home can support you with some health care tasks as well.

What difference will this make



Outcomes are what changes in a person's life because of the support they get from our services.

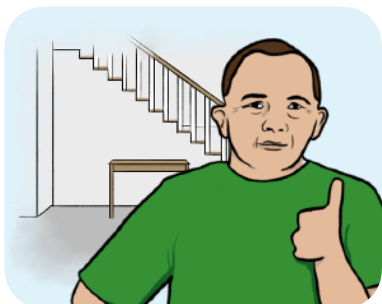


If we do all of this to make things better we can help people to get the good outcomes they want.



The next few pages will show you some of the good outcomes we want you to have.

A. A place you call home



We want to help people live in a place they call home.



This could be your own home or somewhere with more support.



We will give people the right support for this.

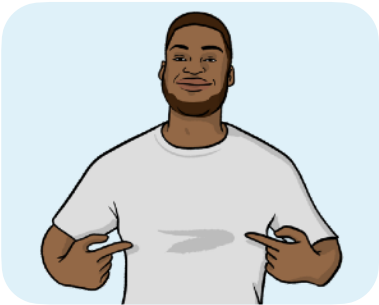


If some people need or want to move, we will help them choose a good new home. People should always feel safe where they live.

B. Living independently



We want to help people be happy and to live as independently as they can.



When care helps people to be independent, they can choose and control the things that matter to them.



This helps them live healthier, happier lives where they choose.

C. Feeling part of their communities



We want people to feel part of their local communities and not feel alone.



We want people to have good friends and relationships.



We will help people take part in their local communities.



We will make sure Carers have fun activities to do in their local areas that help them feel healthy and happy.

D. Good care and support from services working together



We want everyone to get the right care, in the right place, at the right time.



We will help services to work together and give people the right support quickly.



People should know what will happen when, and who to ask for more help.



People should only have to explain what they need once.

E. Being fair to everyone



We want people to help decide about their care and have good choices, no matter who they are.



We want to make support fair for everyone and make sure everyone can use our services.

F. People who provide care and support are well-trained and understand you



We want people to trust that our staff know how to give care with respect.



This means learning and listening about what matters most to a person and helping them to do this.

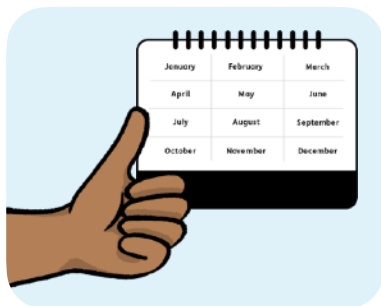


We want to have staff who have had good training and work well together.



It is important that our adult social care staff feel happy and can learn more in their jobs.

What do you think?



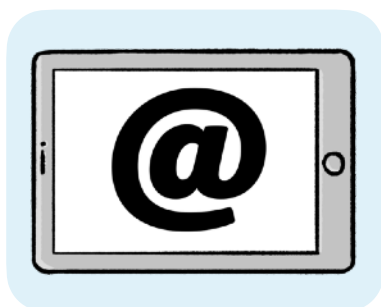
We will tell you every year what we have done to make things better.



We want you to help us improve our services.



If you want to be involved, or you have any questions, please email us at adultsocialcarefeedback@tameside.gov.uk



If you need this strategy in a different language, please email communications@tameside.gov.uk

This Easy Read booklet was produced by easy-read-online.co.uk
The booklet includes images licensed from Photosymbols & Shutterstock.