



FAMILY HUBS



HEALTHY BABIES



Tameside Family Hubs

Tameside's Best Start Local Plan 2026-2028



Tameside
Metropolitan Borough



Contents

Vision and Mission	3
Introduction	4
National Context	6
Local Context	7
Tameside's Best Start system	8
Our Current Position	9
Our Action Plan	10
1. Home Learning Environment and Parenting Interventions	11
2. Early Childhood Education Care (ECEC) Access and Quality	15
3. Transition to School and Reception Year	16
4. SEND support	17
5. Maternal and Early Years Health Services	19
6. Service integration & Best Start Family Hubs	21
7. Workforce Capacity and Capabilities	22
8. Family Involvement	23
Monitoring, Evaluation and Learning	24
Accountability and Governance	25
Appendix A	26



Vision and Mission

Tameside's Best Start in Life model aims to improve the life chances of children (pre-birth to 5 years) by addressing inequalities, narrowing the gap in attainment and improving outcomes for all children, including disadvantaged children and families. With the right support from the start, all babies and infants can thrive and go on to fulfil their potential.

We believe that every child in Tameside should have the opportunity to thrive from pregnancy, through to early childhood, supported by families, communities and services working together.

Our mission is to deliver a joined up, early intervention approach across the Council and partners to ensure every child and family receives the right support at the right time to achieve the best possible start to life.

Early childhood education and care (ECEC) plays a significant role in supporting children's language, physical, and social-emotional development, with the greatest benefits seen among children from more deprived backgrounds. Since nearly all children access ECEC before age four, providing and supporting high-quality ECEC provision is a key lever for delivering strong child outcomes.

Our target set by the Government, is that by 2028, 71% of children - and 57.6% of children accessing Free School Meals (FSM) - will reach a Good Level of Development (GLD). This equates to 248 more children than today.

In feedback provided through our recent survey, which will shape our new Early Years Strategy, parents and carers shared:

Without the support from Family Hubs and Homestart my journey into parenthood would have completely different. It was invaluable.

Can not rate the Family Hubs enough! Brilliant activities, knowledgeable conversations and parent support.

The Family Hubs have been a significant part of my children's first years and has been such a valuable service.

Family hubs have given me and my son many opportunities to get out of the house and play in a safe environment. We connect with other parents and children.



Introduction

Tameside's Best Start in Life model launched in 2022 and is now well established. Tameside operates a Family Hub and spoke model across four localities, North, East, South and West, providing an integrated universal and targeted offer delivered in a flexible way, responding to local need.

The Family Hubs provide a wide range of services to families in conjunction with partners in early help, education, health and the Voluntary, Community, Faith and Social Enterprise (VCFSE) sector.

The Council and partners are united around the commitment to raise Tameside's GLD to 71% by 2028, which currently sits at 61.6%. This Plan outlines our approach to achieving this, through work to strengthen core early years services in Tameside.

In January 2025, we established an Early Years Strategy Group to both develop Tameside's first multi-agency Early Years Strategy and drive forward improvements in outcomes for children aged 0-5 across the borough. The group will develop, deliver, and monitor Tameside's Early Years Strategy, ensuring a joined-up and collaborative approach that supports all children to achieve their full potential.

The key objectives of the group are to:

- Improve health, education, and social outcomes for all children aged 0-5 in Tameside.
- Address inequalities and close the gap in outcomes for vulnerable and disadvantaged children.
- Develop and implement a strategic plan based on shared priorities, evidence, and good practice.
- Foster integrated working across health, education, social care, and the VCFSE sector.
- Monitor the impact of interventions and use data and intelligence to inform continuous improvement.



We actively listen to parents, carers, and children across Tameside to ensure the services and support we provide truly reflect their needs. For example:

You said:

Communities would benefit from more support and advice for children with additional needs.

There were no SEND groups available other than those where direct referrals were made.

Residents would like to see more groups for children aged 2.5+ years.

Family Hubs could work better with Midwives and Health Visitors to support parents.

We did:

We have introduced our Pre School Explorer groups for children aged 2.5+ years.

Midwives and Health visitors regularly deliver services from, and are visible in, all Family Hubs.

We now have a number of SEND groups running from each of our Family Hubs.



National Context

The UK Government has implemented several national policies aimed at ensuring the health, education, and overall wellbeing of children aged 0-5. These policies are designed to provide early support to young children, particularly those from disadvantaged backgrounds, to promote equitable outcomes in health and development.

Tameside's Best Start in Life approach is shaped by national policies and statutory duties, driving a shared ambition to deliver integrated support, reduce inequalities, and ensure every child has the best possible start.

These include:

The Best Start for Life: A Critical 1,001 Days

NHS Fit for the Future: 10 Year Health Plan for England

Health Equity in England: The Marmot Review 10 Years On

Road to Recovery: The Government's 2025 Mandate to NHS England

Core20PLUS5

Healthy Child Programme

Giving Every Child the Best Start in Life

Child Poverty Strategy

Children Act 1989 and Children Act 2004

SEND Code of Practice

Links to the national policies can be found in Appendix A.



Tameside's Best Start system

Tameside's Best Start in Life approach is underpinned by a shared focus and commitment to ensuring the best possible outcome for all babies, children, and families across Tameside.

Services are delivered through our accessible Family Hub and spoke model, providing a joined-up, placed based offer that integrates health, early years, and family support. Effective communication and some colocations allow for early identification of need and targeted support.

Our Best Start System is coordinated, preventative, and family centred, supporting babies and young children to achieve the best possible start in life.






Tameside is currently in the process of developing a new Early Years Strategy and Early Years Needs Assessment, which will be launched later this year.



Our Current Position

The first five years of a child's life are hugely formative, as they lay the foundation for their physical, social, emotional, and cognitive development. Data helps us understand Tameside's current position and identify the action needed to improve early years outcomes across the borough. We are proud of the progress made in recent years but recognise that further work is required to achieve our local ambition of ensuring 71% of children in Tameside achieve a GLD by 2028.

In Tameside:

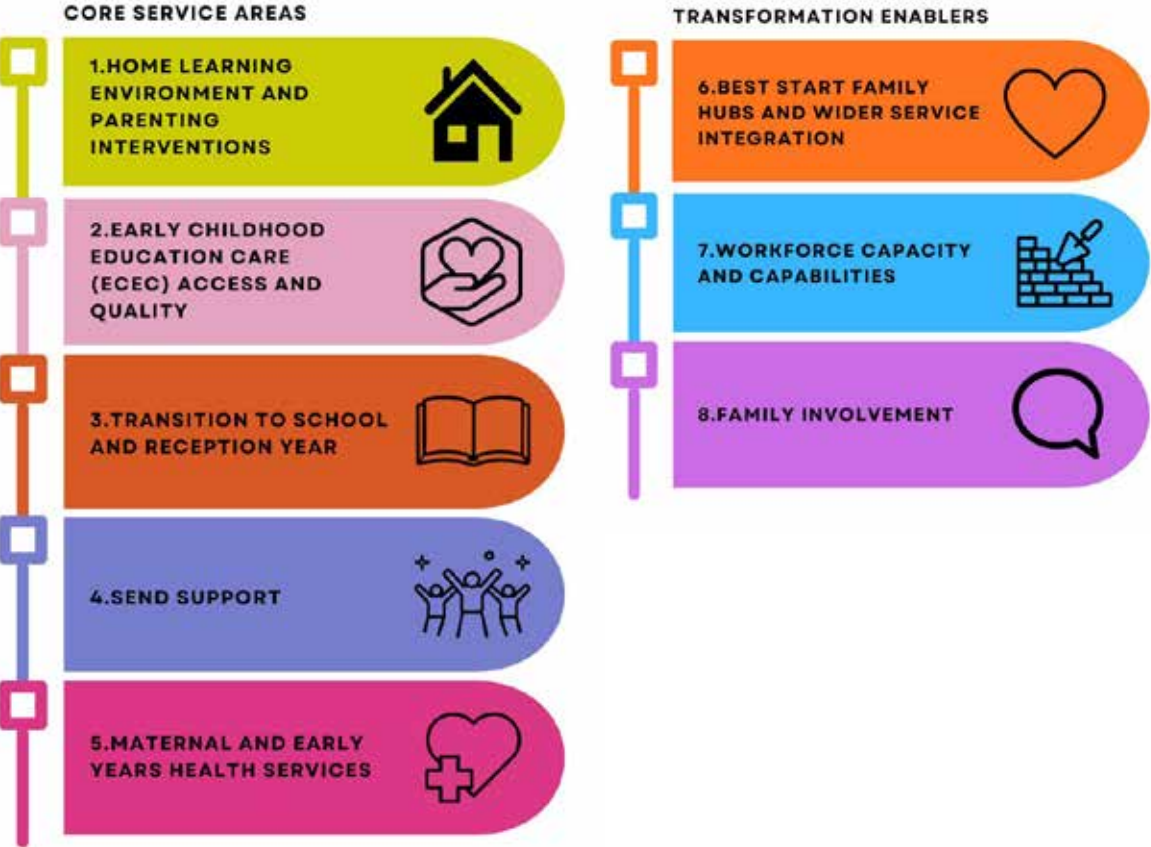
-  Better compared to England
-  Similar compared to England
-  Worse compared to England

Improving the outcomes above isn't about one single intervention, but a whole system approach. Our offer needs to start early and be delivered through joined up services to tackle these inequalities and effect change.



Our Action Plan

This section outlines our action plan and the measures we will use to track progress as we build a coordinated, inclusive Best Start offer and work to ensure 71% of children in Tameside achieve a GLD by 2028. Actions are grouped by core service areas and transformation enablers:



Underpinning all service areas is the shared commitment to offering accessible, timely, and effective interventions, particularly for families facing additional challenges. We strive to ensure our interventions are accessible to families across the borough, supporting the Best Start in Life ambition to improve early childhood outcomes and reduce inequalities, and are determined to continue providing consistent evidenced based interventions across the developmental journey.



1. Home Learning Environment and Parenting Interventions

Two parenting intervention programmes operate in Tameside: **Togetherness** and **Raising Early Achievements in Literacy (REAL)**. **Togetherness** helps parents and carers strengthen their family's emotional health and overall wellbeing, while **REAL** equips parents with practical tools to support their child's learning and boost early literacy skills.

Togetherness

Tameside's Togetherness parenting programme, offered both pre-natal and post-natal, is designed to support parents to build an attuned and connected relationship with their baby and nurture family relationships.

The programme is now delivered jointly with partners, including Midwives and Health Visitors, to ensure families receive holistic and well coordinated support. We strive to expand the delivery and uptake of Togetherness to support more parents and carers across the borough to build confidence, strengthen their family relationships, and promote positive emotional wellbeing.

To achieve this, we will:

- **Map current provision** and identify gaps in access for priority families, including those experiencing disadvantage, SEND and parental conflict.
- **Ensure professionals across the network are equipped** to identify families who may benefit from parenting support and provide them with the skills to complete lower-level support.

This will include a shared workforce development offer across services to ensure consistent messaging and approaches.

- **Deliver parenting programmes** in accessible community venues including Family Hubs and schools to ensure participation is maximised, this will be across the whole borough to ensure all families can access.
- **Adopt consistent measures** to track impact, including that of parental confidence, child development and wider family wellbeing.
- **Evaluate all parenting interventions** and their effectiveness each term to inform development and service improvement.
- **Work to achieve** a 75% engagement and attendance rate of families attending parenting interventions.
- **Work to increase** numbers of outside agencies supporting delivery of parenting interventions.
- **Have 15% of Tameside schools engaged** in delivery of parenting interventions.
- **Increase numbers of referrals** for parental conflict support by 20%.
- **Sustain numbers** of new parents accessing digital interventions such as Togetherness Online at 30 per month and Tameside Relationships Matter website at 40 per month.

To measure impact, we will:

- **Monitor numbers** of families on waiting lists to access support.
- **Gather parental and referrer feedback** pre and post intervention.
- **Track numbers of referrals** being received.
- **Track numbers of practitioners** trained to deliver evidenced based interventions.



Parents and carers who completed the Togetherness Programme shared:

I feel more recharged and hopeful. The course has improved my relationship with my daughter as a... direct result of the tips and strategies given.

It has helped me to understand myself and my child's emotions and reasons for them.

The course has challenged my perceptions of what I thought I needed to do and perhaps offered breathing space. It has been a very positive place to be, it was very good mentally to hear that I am a good parent.

The course has made me feel less alone and more confident in myself and my efforts.

Practitioners who completed the Togetherness Programme shared:

I feel able to now focus on relationships and understanding behaviours as communication including with parenting

I feel more confident in embedding this into practice and supporting families with a deeper understanding.

TOGETHERNESS
Bringing the Solihull Approach to the world



Raising Early Achievements in Literacy (REAL)

Raising Early Achievements in Literacy (REAL) is an evidence-based initiative used to support children in the Home Learning Environment, by supporting parents to understand and strengthen young children's early literacy development. We are committed to expanding the delivery and uptake of REAL to ensure more parents feel confident and equipped to support their child's early learning at home.

REAL in Tameside is demonstrating short-term positive impacts in early literacy measures, including increased interest and engagement with books, improved oral language skills such as vocabulary, speaking and listening, early writing attempts through markmaking, the greater recognition of environment print.

To achieve this, we will:

- **Upskill our workforce** to offer REAL training as a rolling programme.
- **Offer REAL training** to colleagues across the Early Years workforce, PVI's, Education, Health and VCFSE sector organisations.
- **Strengthen the offer** through colocation of multiagency teams in Family Hubs, ensuring one Home Learning Educator in each locality.
- **Prioritise** 3 and 4-year-olds.
- **Improve accessibility** to the programme by developing an evening and weekend offer.
- **Focus delivery** in areas with low uptake of 2-year childcare, low GLD outcomes, or within communities where English is not the first language.

- **Offer bespoke workshops** for parents that address inequalities such as gender differences in learning and to support communities where English is not the first language.
- **Increase the numbers** of children accessing REAL by 50% through working in partnership with PVI settings and Primary schools and offering support from Home Learning Educators.
- **Expand the programme** to include the Special Approach to REAL training for parents, an adaptation of REAL for children with Special Educational Needs and Disabilities (SEND) and ensure that at least 30% of children accessing REAL support are of this cohort.

To measure impact, we will:

- **Monitor attendance** rates and cross service participation.
- **Monitor numbers** of families on waiting lists to access support.
- **Gather parental and referrer feedback** pre and post intervention.
- **Monitor the number** of PVI and primary settings delivering.
- **Track numbers of referrals** being received.
- **Track numbers of practitioners** trained to deliver REAL.
- **Have 30% of Tameside schools** and PVI's engaged in delivery of REAL.
- **Increase numbers of referrals** for to Home Learning Educators by 30%.
- **Measure progress** through the use of Wellcomm, and REAL pre and Post measures.



Parents and carers who completed the REAL programme shared:

We have learnt
together when
outside

It has given me
more confidence
than before

I enjoy reading
stories with him

It has helped my
daughter in learning,
and her scores have
gone up so mum is
very happy



2. Early Childhood Education Care (ECEC) Access and Quality

Tameside has commissioned a provider to produce an Early Years model for Tameside using the latest available data on resident pre-school age children, children accessing funded early years entitlements, and the local provision of funded early years care, alongside assumptions on the potential impact that planned local housing developments could have on the demand for funded early years places.

The model will provide a 5-year forecast for the future requirement for funded early years places by term (up to and including Autumn 2029). Forecasts are provided for each ward in Tameside and for Tameside in total, broken down by funded entitlement age group and funded entitlement type.

Once completed, this will provide in depth benchmarking that will enable the identification of a shortage or surplus of funded early years places by residential ward, funded entitlement age group, and term. We will then work towards expanding the availability and quality of early education and care settings in areas of high need.

Currently, in Tameside:

62.7% of 2-year-olds access early education compared to 65.2% across England.

92.3% of 3-year-olds are in education compared to 90.6% across England.

99.2% of 4-year-olds are in education compared to 95.6% across England.

Early Learning for 2-year-olds is a priority with the minimum expectation set at 73.4% and a stretching goal of 81.0%.

To achieve this, we will:

- **Contact all eligible families** across the borough to ensure families are aware of the offer and can receive support to access their place.
- **Promote the online application**, support the application process and eligibility checks.
- **Ensure all families** receive follow up calls after applying.
- **Identify local settings** and childminders for families, and support visits to see what facilities are on offer.
- **Signpost to other childcare options** through childcare choices
- **Communicate** with grants team to considering those who take up working entitlement as part of overall data.
- **Identify areas of low uptake** for targeted outreach

To measure impact, we will:

- **Monitor the Early Learning** for two-year-olds.
- **Monitor the number** of 3- and 4-year-olds in education.
- **Expect to see** an increase in GLD.



4. SEND support

SEND has been a key area of development within Tameside Family Hubs over recent years. In response to rising need, processes have been put in place to help ensure that families can access high-quality, joined-up care when emerging needs or special educational needs and disabilities are identified

Inclusive services are offered for children aged 0-5, with each service tailored to their age and developmental stage to help ensure they are ready for school and to support efforts to close the attainment gap between boys and girls.

Children are observed within group settings, and any child showing potential developmental concerns is identified and discussed by health professionals before being referred to the appropriate pathway for additional support. All sessions are planned in accordance with the Early Years Foundation Stage (EYFS) framework.

Early years SEND support in Tameside includes:

- **SEND support groups:** Priority is given to children who don't reach the Portage criteria for one-to-one support in the home. The group is led by the portage worker and early years SEND worker and supports the development of all children that attend as well as peer support for parents.
- **Special Approach to REAL:** A Special Approach to REAL builds on the original Raising Early Achievements in Literacy but tailors the activities and resources so they are accessible, developmentally appropriate and meaningful for children with a wide range of needs.

- **Togetherness:** Tameside's Parenting Offer is designed for all families but naturally aligns with and supports SEND families by giving parents the core skills to understand their child's emotions, behaviours, and development, which are crucial when additional needs are present.

The Council and its partners are committed to strengthening support for children with SEND and their families, ensuring that every parent and carer can access the help they need.

We will continue to prioritise families who have additional needs and/or higher levels of vulnerability by providing fast tracked or targeted support as well as more intensive support e.g. home visits or allocation of a lead professional.

To achieve this, we will:

- **Establish clear referral routes** to wider community health, education and wellbeing support for those identified during early detection screenings.
- **Hold monthly panel meeting** for portage and SEND to triage referrals and ensure this is a multi-agency meeting.
- Increase the frequency of SEND groups from 2 weekly to weekly across the borough.
- **Continue to offer universal SEND stay and play** during half term for children that won't be accessing their funded place at nursery.
- **Continue to offer Swim and Soft Play sessions** in the holidays for the Portage & SEND families.
- **To contact children** that aren't in a setting and have a section 23 in place.



- **Continue to deliver and develop** the SLC (Speech, Language and Communication) pathway.
- **Continue to implement Mini Movers** to support the physical pathway.
- **Recruit specialist** SEND practitioners for every Best Start Family Hub.

To measure impact, we will:

- **Continue to use SOGs** to assess children's strengths and build on these to support children meeting their milestones.
- **Conduct surveys** to capture the opinions and experiences of SEND families to shape service delivery.
- **Identify and champion good practice** case studies.
- **Monitor** ASQ assessments.
- **Pre and Post** Wellcomm language screening.
- **Longer term GLD data** on school readiness.
- **Evaluate the impact** of targeted pathways using the child and parent interaction tool.

One parent who completed the Special Approach to REAL shared:

I just wanted to say thank you so much for having us this morning. I was really nervous but everyone was so kind. The information was all brilliant and my two are already making use of their crayons and modelling dough! I definitely have lots on new ideas to put in place.



5. Maternal and Early Years Health Services

Over the past three years, Tameside has seen substantial growth in services and programmes focused on Perinatal Mental Health and Parent Infant Relationships.

We have launched both the Your Baby and You and the Your Toddler and You resources, co-produced with parents, and over 20 different grass root community groups have been awarded grants to run local activities to support parents and their babies' relationships.

Breastfeeding rates continue to improve in Tameside. We commission a breastfeeding peer support service that provides families with guidance and encouragement during pregnancy, in hospital, and within the community. The service also administers a breast pump loan service and awards baby friendly venues to encourage a culture of breastfeeding in the borough. The Tameside and Glossop Integrated NHS Foundation Trust Infant Feeding Team provide feeding clinics for more complex feeding challenges and co-ordinate the borough's work towards the Baby Friendly Initiative status.

We have recently invested in 2 insight projects, one exploring young people's perception of breastfeeding, and the other focusing on perinatal and parent infant mental health (PPIMH). It is envisaged that the final reports will support how we progress and plan our maternal and early years health services going forward.

The young people's perception of breastfeeding project seeks to:

- **Improve our understanding** of the existing knowledge and perceptions of breastfeeding in the local population of young people.
- **Support young people's understanding** of the benefits of breastfeeding to parent and child, thereby increasing the likelihood of breastfeeding being a preferred choice for feeding a future baby.
- **Contribute to** normalising a culture of breastfeeding within the borough.

The perinatal and parent infant mental health (PPIMH) project seeks to:

- **Improve our understanding** of the opportunities, motivations and barriers which influence PPIMH outcomes and help-seeking behaviours in Tameside.
- **Support the development** of a co-produced communications campaign(s) targeted at residents in the perinatal period which builds community knowledge and awareness of PPIMH, reduces stigma and encourages help-seeking behaviours.

We are committed to improving integration between health and family support services to better enable access to health and wellbeing services including support for feeding and nutrition, immunisation, oral health, preventing and managing child injuries and illness, and maternal wellbeing.



To achieve this, we will:

- **Promote take-up** of Healthy Start and healthy nutrition practices.
- **Increase take-up** of childhood vaccines through a community-led campaign.
- **Offer support** to pregnant people with any concerns relating to smoking, alcohol consumption and/or wider health challenges.
- **Increase the number** of early years settings partaking in the Supervised Toothbrushing Scheme.
- **Progress** through the Baby Friendly Initiative accreditation levels.
- **Continue** the Parent Infant Relationship Community Grants Programme.
- **Continue the delivery** of Early Start groups to targeted populations such as neonatal babies.

To measure impact, we will:

- **Track** the following national datasets:
- **Healthy Start** uptake data.
- **Reception prevalence** of obesity.
- **Percentage of 5-year-olds** with dental decay.
- **Population vaccination coverage**, including MMR and Dtap IPV Hib HepB (in 2-year-olds).
- **Breastfeeding prevalence** at 6 to 8 weeks.



6. Service integration & Best Start Family Hubs

We are committed to transforming children and family services in a system-wide model that provides high-quality, holistic, and whole-family support services for families from conception through the child's early years, to later childhood up to the age of 19, or 25 for young people with SEND. This includes increasing access to services, improving connections among services and practitioners, and strengthening relationships between families and professionals, bringing together existing family support services across health and social care, as well as VCFSE and education settings, to provide a single point of access.

We will ensure that every Family Hubs offer a welcoming one stop shop to access a range of valuable services. Through strong partnership and multiagency working, we will improve families' experiences of early years services.

To achieve this, we will:

- **Continue to provide** a broad range of universal services that support all areas of learning and offer opportunities for families across the borough with children aged 0-19, and up to 25 for those with SEND.
- **Continue to engage** with external partners across Health and the VCFSE sector to ensure widespread knowledge and use of the offer.
- **Identify how** the work of Parent Carer Panels links in with wider participation activity and governance routes so parental voice is considered at the highest level.

- **Work with** the partnership for support to identify PVI and school settings where services can be delivered.
- **Co-deliver** Parent Carer Panels, dependent on the theme, to strengthen skills and knowledge sharing e.g. health representation for health topics.
- **Develop and progress** colocation of more services within all Family Hubs.
- **Integrate** the HAF programme into the school holidays and provide good quality activities and experiences for our most vulnerable children.

To measure impact, we will:

- **Monitor footfall** across all Family Hubs and spokes.
- **Monitor the percentage** of families in target group accessing Best Start Family Hubs.
- **Use a variety of mediums** to collect family feedback.
- **Use quarterly reporting** to monitoring data about referrals and waiting times for key services.
- **Measure** the progress through quarterly performance reports, service user feedback and case studies.



7. Workforce Capacity and Capabilities

Family Hubs use a place based approach to bring together key Council and partner services in one convenient location, improving access for communities and strengthening connections between families and professionals.

At this time of rapid change, we recognise that our workforce needs to be responsive and innovative. Our Family Hubs are essential for supporting families and a skilled and effective workforce is crucial to support the success Tameside's Best Start in Life approach.

Tameside's Best Start Local Plan is also underpinned by Tameside Children's Service Heart of Support Practice Approach, which informs how Children's Services build relationships, understand lived experiences, and work alongside children, young people, and families. The approach is built on five guiding words: Collaboration, Compassion, Conversation, Curiosity and Courage which set the foundation for how Children's Services structure and deliver support for children throughout Tameside.

The approach was launched in 2025 and defines what good practice should look like to ensure children and young people receive consistent support tailored to their individual needs and experiences.

To achieve this, we will:

- **Ensure sufficient capacity** in universal and targeted Best Start services.
- **Build a workforce** with the right skills to support families in the early years.
- **Support integrated working** through shared learning opportunities.
- **Deliver** a coordinated programme of professional development that promotes shared understanding of Best Start priorities and ways of working.
- **Promote consistency**, continuity and high-quality practice across services.
- **Supporting workforce** wellbeing and resilience.
- **Use intelligence** from Tameside's Early Years Needs Assessment, due for completion May 2026, to ensure our workforce is adequately and appropriately trained in accordance with community needs.

To measure impact, we will:

- **Monitor the %** of workforce completing core multi-agency training.
- **Regularly review** workforce capacity, skills and wellbeing through Best Start governance arrangements.
- **Monitor data** on recruitment, retention, training uptake and staff feedback, which will inform continuous improvement and future workforce planning.
- **To develop a** quality auditing/monitoring tool to support the quality of delivery and learning.



8. Family Involvement

We are committed to building a stronger and more sustainable family engagement programme that facilitates a range of participation opportunities to allow as many families as possible to be involved.

We will work closely with professional stakeholders as well as voluntary and community partners to reach seldom-heard families and respond to families' changing needs and priorities.

To achieve this, we will:

- **Recruit parent representatives** to governance boards and establish means for parents to comment directly at steering group and strategy meetings to ensure their opinions are taken into account.
- **Build stronger relationships** with parents as partners who engage regularly.
- Increase engagement with diverse and underrepresented groups.

To measure impact, we will:

- **Collate testimonials** from parents. We want to ensure parents feel meaningfully involved in co-production and see themselves reflected in the work and the outcomes.
- **Track the number of** parent representatives recruited.
- **Track the number of** people engaging with the mailing list (currently 211) and Facebook group (currently 55).
- **Seek evidence of** service improvements driven by family engagement.
- **Collate insight** on the diversity of parent engagement is in line with Tameside's population.



Monitoring, Evaluation and Learning

Monitoring, evaluation and learning is an essential function of the Best Start in Life offer across Tameside.

Internal and external datasets provide valuable insight into local need and the impact of our services, enabling us to make informed decisions and target support where it is most needed. Tameside's Early Years Needs Assessment, due for publication later this year, will further deepen our understanding of local priorities, help us assess whether our work aligns with emerging needs and trends, which will inform future service planning and development.

Monitoring of data is complemented with regular community and professional consultation surveys, as well as focused research studies to gain deeper insights into issues of concern, such as our 2 insight projects in relation to young people's perceptions of breastfeeding and PPIMH.

All workstreams provide updates to the Family Hub Steering Group, and this learning is used to inform decisions about service implementation and effectiveness. It helps identify where services are working well, as well as where they may not be the right fit or are not achieving the intended outcomes. Collecting the right data is an important part of measuring and monitoring impact. We will develop a best start data dashboard that reflects key outcome measures relating to efforts to give every child the best start in life. Monitoring, evaluation and learning will be linked to local dashboards and embedded into commissioning and funding agreements.

Monitoring, evaluation and learning will be linked to local dashboards and embedded into commissioning and funding agreements.

Ultimately, we will know we have made a difference if there is an improvement in the proportion of children achieving a GLD, particularly in our more deprived communities. Feedback from our families will also prove essential in helping us understand their experience of raising babies and young children in Tameside, and our Parent Carers Panels will be key to this.



Appendix A

For more information on the national drivers shaping Tameside's Best Start Local Plan, see the links below:

[The Best Start for Life: A Critical 1,001 Days](#)

[NHS Fit for the Future: 10 Year Health Plan for England](#)

[Health Equity in England: The Marmot Review 10 Years On](#)

[Road to Recovery: The Government's 2025 Mandate to NHS England](#)

[Core20PLUS5](#)

[Healthy Child Programme](#)

[Giving Every Child the Best Start in Life](#)

[Child Poverty Strategy](#)

[Children Act 1989](#)

[Children Act 2004](#)

[SEND Code of Practice](#)

