



**Tameside Adult Safeguarding
Partnership Board**

Tameside Adult Safeguarding Partnership Board Strategy

2025-28

Foreword

As the Independent Chair of the Tameside Adult Safeguarding Partnership Board (TASPB), I am proud to present our Strategy for 2025–2028. This document builds on the strong foundations laid by our 2022–2025 strategy and reflects the collective learning, dedication, and progress made by our partners across Tameside.

Over the past three years, we have strengthened our safeguarding arrangements, deepened our understanding of the lived experiences of adults at risk, and responded to complex challenges with compassion and collaboration.

Through Safeguarding Adult Reviews and the voices of those with lived experience, we have identified key themes that continue to shape our priorities—adult exploitation, support for carers, multi-disadvantage, and homelessness. These are not just strategic priorities; they are human stories that demand our attention, empathy, and action.

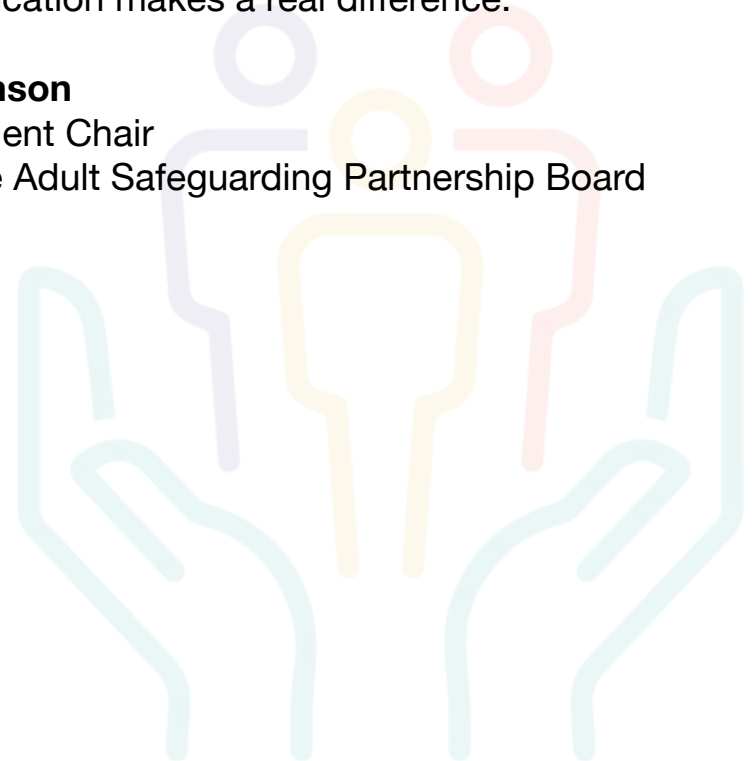
This new strategy is rooted in our shared vision: that adults with care and support needs in Tameside feel safe, are empowered to manage risks, and are protected from harm, abuse, and neglect. It reflects our commitment to person-centred, outcome-focused safeguarding that is co-produced with the people it serves.

We know that safeguarding is not the responsibility of one agency alone. It is a shared endeavour—one that requires trust, transparency, and a relentless focus on improvement. I am confident that, together, we will continue to build a culture of safety, dignity, and respect for all adults in our community.

Thank you to all our partners, practitioners, and community members who contribute to this vital work.

Your dedication makes a real difference.

Jane Timson
Independent Chair
Tameside Adult Safeguarding Partnership Board



TASPB *Who we are...*

We are a Safeguarding Adult Board whose role is to successfully lead adult safeguarding arrangements across Tameside and oversee and coordinate the effectiveness of the safeguarding work of the Statutory agencies and Partner agencies of the Boards.

It does this by:-

- assuring itself that local safeguarding arrangements are in place as defined by the Care Act 2014 and statutory guidance
- assuring itself that safeguarding practice is person-centred and outcome-focused
- working collaboratively to prevent abuse and neglect where possible
- ensuring agencies and individuals give timely and proportionate responses when abuse or neglect have occurred
- assuring itself that safeguarding practice is continuously improving and enhancing the quality of life of adults in its area.

TASPB must apply 3 statutory functions as defined in the Care Act 2014:

- Publish a Strategic Plan
- Publish Annual Report
- Commission Safeguarding Adult Reviews

Our Vision

We will be assured that Adults with care and Support needs feel safe and are supported to recognise and manage risks and are protected to their right to live in safety, free from bullying, harassment, abuse, discrimination, avoidable harm and neglect.



Commitment

TASPB recognise that the abuse of adults is a reality. The board do not believe it is acceptable and are committed to partnership working to prevent and stop both the risks and experience of abuse or neglect.

They will ensure that the safeguarding arrangements:

- Promote the adult's well-being.
- The staff in their organisations work with the person to establish what being safe means to them and how best this can be achieved.
- Staff are trained to be alert in detecting signs or symptoms of adult abuse.

Organisations represented at TASPB

Statutory Organisations:

- Local Authority
- Greater Manchester Police
- NHS Greater Manchester Integrated Care Board

Partner Organisations:

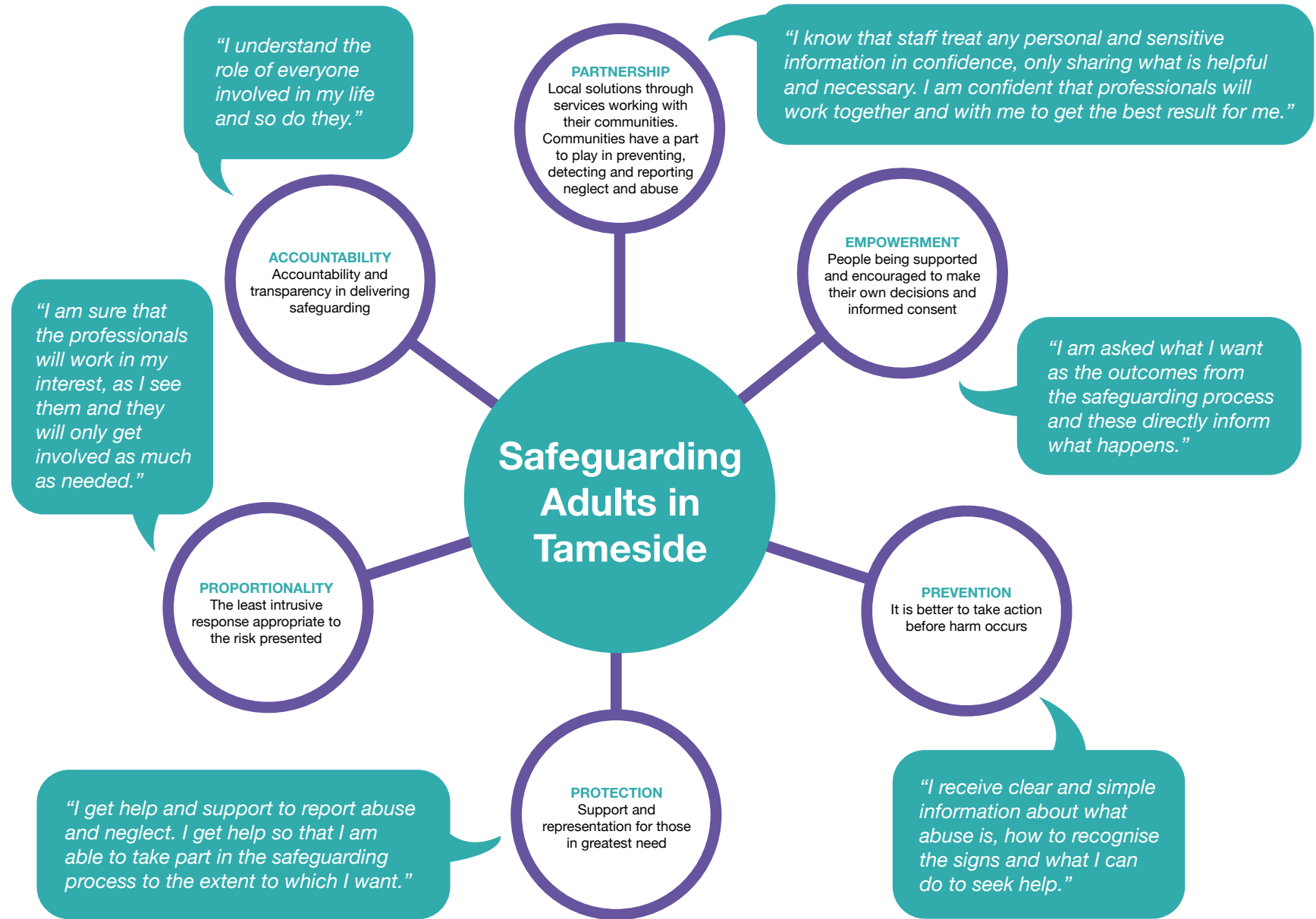
- Healthwatch
- Greater Manchester Fire and Rescue Service
- Greater Manchester Probation Service
- Tameside and Glossop Integrated Care NHS Foundation Trust
- Pennine Care NHS Foundation Trust
- Jigsaw
- Change Grow Live
- Northwest Ambulance Service
- Voiceability
- Action Together
- Department of Works and Pension
- Elected Member

Safeguarding Principles

The Board are committed to empowering individuals to make choices and supporting them to manage risks.

Working in partnership and listening to the voice of the lived experience of Adults will aid co-production of the work to safeguard adults and lead to the services that people want to use, with the potential to prevent crises from developing. The 6 Principles of Safeguarding as outlined in the Care Act 2014, underpin this Safeguarding Adult work.

TASPB strive for these Principles to be applied and seek assurance that our Partner Organisations have these embedded in practice.



Strategic Priorities

The focus for TASPБ strategic Priorities are the themes identified in recent Safeguarding adult reviews (SAR) A SAR is a multi-agency review to determine if serious harm to an adult who has experienced abuse or neglect could have prevented. The review aims to identify learning to improve services and prevent future abuse and neglect. This work in Tameside has helped TASPБ have a clear understanding of the key safeguarding risks and issues in the area.

Some of these themes we also know are emerging trends nationally. We, therefore, strive to learn from these lessons and take further action to remove future risks and drive best practice. The following themes will be a focus as our Strategic Priorities over the course of the next 3 years:

1. Adult Exploitation

Adult exploitation is taking place across the UK. It is a criminal offence and has many different forms including modern slavery. Adult Exploitation has been a theme in SAR's such as [Riley](#) and more recently [SAR-Simon](#)

2. Support to Adult Carers

We know that when Carers feel supported, valued and recognised in their caring role, they are able to better support the people they love and care for. [Ruth and Daniel](#) and [TASPБ-SAR-Rita](#) discuss the support to Adult Carers.

3. Adults who Experience Multi-Disadvantage

Adults who experience multiple disadvantage encompass a combination of problems that are shaped by long-term experiences of poverty, deprivation, trauma, abuse and neglect. Some may also suffer racism, sexism and homophobia. These inequalities intersect and the impact can be evident in a combination of experiences including homelessness, substance misuse, domestic violence, contact with the criminal justice system and mental ill health.

There is a strong commitment from TASPБ to raise awareness, strengthen an integrated approach and improve knowledge and understanding of Adults experiencing Multi-disadvantage. A particular focus is on transitions across service areas. [SAR Anne](#) is an example of TASPБ's commitment to this learning.

4. Homelessness and Rough Sleeping

We know there is a considerable overlap between rough sleeping and the presence of safeguarding concerns. Most adults rough sleeping are at significant risk of abuse, neglect, and severe escalation of health and care needs. Safeguarding Adult Boards are encouraged to commission safeguarding reviews for incidents involving rough sleeping deaths. [Riley](#) also discusses the abuse experienced as a result of homelessness.

Strategic Objectives and Actions

Exploitation

Objective: We will work with Partner Organisations in Tameside to protect those adults who have care and support needs from exploitation.

o **Actions:**

- Identify pathways in Tameside that support victims of exploitation and promote this work across Partner Organisations in Tameside.
- Provide specialised training for safeguarding practitioners to recognise signs of exploitation and respond effectively.
- That the Tameside Community are supported to recognise the signs and symptoms of exploitation and know who to contact when they don't feel safe, or have concerns about the safety of other people

Outcome: We will have assurance that Adults at risk of exploitation are identified and have clear pathways to access support to protect them from abuse.

Support to Adult Carers

Objective: We will promote the work of partner organisations in Tameside to support Adult Carers to continue to provide and maintain dignity in care and quality of life for adults with care and support needs

o **Actions:**

- Provide information and resources to help carers manage in their caring role and access timely support when needed.
- Work with Carers to learn from lived experience so that TASPb can promote best practice with different services and professionals, how Carers support with dignity in care, and provide and maintain a quality of life for the adults they care for with profound or complex needs
- Promote the Carers role to help identify and encompass more people who care for family members

Outcome: We will have assurance that partner organisations are conducting Carer Assessments and that Carers have access to the right support at the right time to continue to provide and maintain dignity in care and quality of life for adults with care and support needs.

Adults who Experience Multi-Disadvantage

Objective: We will demonstrate that there are strong cross-sector partnerships to respond to tackling multiple disadvantage and improving outcomes to prevent Adult Abuse in this cohort of people.

o **Actions:**

- Foster partnerships with organisations and services that specialise in supporting individuals with multiple disadvantages.
- Pathways for transitions between services are strengthened,

Outcome: Adults who experience multi-disadvantage are aware of and have access to Pathways to the right services for them at the right time to prevent harm occurring.

Homelessness and Rough Sleeping

Objective: We will have assurance that local safeguarding arrangements and partnerships adequately protect adults with care and support needs who may be vulnerable to abuse or neglect (including self-neglect) and are homeless.

o **Actions:**

- Promote pathways and flexible responses to assessments, housing, and access to specialist accommodation with support for people who are rough sleeping to ensure adequate protection
- Establish procedures for practitioner engagement with this cohort through promoting workforce literacy around understanding safeguarding, relevant legislation, perceived stigma, multiple disadvantage, and the roles and responsibilities of various stakeholders in supporting individuals rough sleeping

Outcome: Safeguarding arrangements provide adequate protection for people who are homeless and rough sleeping in Tameside.

Implementation Plan

TASPB will publish an annual strategic plan which will include:-

- **Actions for each strategic priority:** a timeline over a 12 month period with specific outcomes for each strategic objective
- **Governance Arrangements:** an outline of the necessary resources to deliver the outcomes of the strategic priorities
- **Monitoring and Evaluation:** an update to provide progress on the outcomes of the strategic priorities

Communication Plan

TASPB have a communication strategy with a focus on:-

- **Internal Communication:** all partner organisations are informed and engaged through regular meetings, newsletters, and updates.
- **External Communication:** public awareness through media campaigns, community events, and social media.

By focusing on these strategic priorities and actions, the Tameside Adult Safeguarding Partnership Board can work towards creating a safer environment for adults at risk of abuse.

Governance Arrangements to support the Implementation of TASP Board Strategy 2025-2028

