

TAMESIDE NURSERY PLACE REVIEW CONSULTATION PAPER

1. Review of Nursery Education Places

1.1 The Department for Children, Schools and Families (DCSF) has instigated a review of funding arrangements for schools providing nursery education. From April 2011 schools will be funded on take up of nursery places rather than an agreed admissions number. In addition, in the statutory Early Years Foundation Stage framework the DCSF recommends at least one member of staff for every 13 children in maintained school nursery classes. In order to meet the new funding arrangements and the DCSF recommendation, we are undertaking a review of nursery school places across Tameside. This review provides the opportunity to organise maintained nursery provision in line with the Council's long term aim to provide the equivalent of 26 part time (13 full time equivalent) places associated with each reception class of 30 wherever practical for 4 year olds before entry to reception whilst being cognisant of provision in the non-maintained sector.

1.2 Schools operate most efficiently and effectively when full or nearly full. To this end the Council seeks to keep the number of surplus places (places in schools that are authorised but unfilled) to a minimum. This consultation paper will establish the maximum number of nursery places that a school can operate while ensuring a high-quality, viable and financially efficient nursery class – termed “maximum funded places”.

1.3 It is important to stress that the recommendations put forward in this consultation paper do not represent a final decision. The consultation paper considers a range of factors that are pertinent to Tameside. It considers the increase in the birth rate in the area over the last four years, educational standards, the specific geography of the area, the duty to secure sufficient childcare and the interests of proper school place planning.

2. Securing Sufficient Childcare

2.1 From 1 April 2008 local authorities have had a statutory duty under Section 6 of the Childcare Act 2006 to secure sufficient childcare to enable parents to work, or to undertake education and training leading to work. Sufficiency does not therefore simply relate to the numbers of places available but also encompasses consideration of the accessibility, affordability, flexibility, sustainability and quality of such places.

2.2 To fulfil this duty, local authorities need to facilitate and shape local childcare markets which are responsive to parents' needs and provide sufficient high-quality, accessible and sustainable childcare. As a preparatory step towards meeting the Sufficiency Duty fully, Section 11 of the Childcare Act, which came into force on 1 April 2007, required local authorities to undertake a Childcare Sufficiency Assessment.

2.3 The assessment is a measurement of the nature and extent of the need for, and supply of, childcare within each local area. It helps local authorities to identify where there are gaps in the market and, in consultation with parents, communities and employers, plan how to support the market to address them. The first assessments had to be completed and published by 31 March 2008.

2.4 The sufficiency duty reinforces the partnerships with providers from the private, voluntary and independent and maintained sectors that are necessary to create a strong, sustainable and diverse childcare market that meets the needs of parents.

3. Extension to the Free Entitlement for 3 and 4 Year Olds

3.1 All three and four year old children are entitled to a free part time early years education place. From September 2010, this free entitlement is being increased to 15 hours each week for 38 weeks a year. Children become eligible for this grant the term following their 3rd birthday. In addition, delivery of this extended entitlement may wherever possible allow families to be able to access this in a flexible way to meet their needs. Being flexible means that a parent may use their new 15 hour entitlement in any combination of hours within the week subject to locally agreed parameters. This is in response to reasonable parental demand and the chosen provider(s) ability to meet such demand. This flexible offer may not be available in all settings. Research has shown that children who receive good quality pre-school education acquire the skills they need to make good progress at school so in terms of improving outcomes for children it is important that children are able to access this free provision, especially in areas of disadvantage.

4. Early Years Single Funding Formula

4.1 In June 2007 the Government announced its intention to change the funding arrangements for the free entitlement to early year's providers for 3 and 4 year olds across maintained, private, voluntary and independent sectors. This Early Years Single Funding Formula (EYSFF) is intended to address the perceived inconsistencies in funding between the maintained sector and the private, voluntary and independent (PVI) sector. The intention is to ensure funding arrangements support a mixed market and that all settings are funded on the basis of participation, not places. It is anticipated, therefore, that the most significant implications of the EYSFF are for maintained sector providers, particularly where place led funding has until now been the norm for early years provision, and where settings have been running with spare capacity. The DCSF guidance states that in determining funding for nursery schools under the EYSFF, local authorities must remain aware of the presumption against closure of nursery schools. These new funding arrangements were planned to be implemented from April 2010. However, in December 2009, Dawn Primarola, Minister for Children, Young People and Families, took the decision to postpone the implementation of the Early Years Single Funding Formula by one year from April 2010 to April 2011. The Tameside Early Years Funding Reform working group agreed to proceed as planned with the proposed transitional arrangements namely:

- Uplift of current nursery education funding by 4% for all providers from April 2010
- National roll out to all providers of the increase to 15 hours in September 2010 and flexible delivery of the 15 hours
- Quality Team to continue to work with all providers to improve quality
- Undertake a review of school nursery places to ensure consistency of maximum funded places across maintained providers
- Move to funding via participation for all schools in Tameside from April 2011
- Revise the proposed formula in light of the consultation responses and any further information from the DCSF

5. Nursery Education: Historic Picture

5.1 At present Tameside contains a diverse range of private, voluntary, independent and maintained nursery provision. This has not always been the case and nursery provision has historically been scarce in some areas of the borough leading to larger community nurseries in some schools. While the Council has no wish to disrupt unnecessarily what is working well, where localised provision has increased sufficiently, the Council considers it sensible to plan to a consistent set of guidelines and is consulting on aligning nursery classes as appropriate to reception class published admission numbers (PANs). This may involve a reduction or an increase in maximum funded place numbers at relevant nurseries. Should reception class PANs change in coming years, the nursery class maximum funded place number may also be amended as appropriate.

6. Distribution of Nursery Education Settings in Tameside

6.1 At Autumn term 2009 there were a total of 116 settings funded to provide nursery education in Tameside as follows:

- 64 Maintained school nurseries
- 30 Private day nurseries
- 19 Pre-school playgroups
- 2 Independent schools
- 1 childminder belonging to an accredited network

An estimate of the total number of places available for free early years education is provided in table 1 below:

Area	Maintained places (school nurseries)	Estimated PVI* places: possible 3 - 5 yr old capacity	Total places	Estimated number of 4 year olds*		
				2009	2010	2011
Ashton-under-Lyne	580	348	928	631	663	726
Denton, Droylsden & Audenshaw	828	609	1437	740	757	789
Dukinfield, Stalybridge & Mossley	669	481	1150	641	705	720
Hyde & Longdendale	546	200	746	589	611	649
Tameside Total	2623	1638	4261	2601	2736	2884

*PVI places calculated using the following methods:

- The maximum number of children that can be accommodated in the pre-school room of a day nursery
- The number of 0-5 registered places with a childminder

6.2 In terms of availability and accessibility in the maintained sector it should be noted that Tameside aims to provide nursery provision for the year prior to the the child starting full time school and schools have clear guidance on the admission criteria for the allocation of places to ensure that wherever possible children receive timely access to a free place. With the variety of different settings now providing the free entitlement parents and carers can explore the different options available to them with regard to accessing a free place.

6.3 The figures from the January 2009 school census show that there were 474 unoccupied places within Tameside maintained nurseries as follows:

- Ashton-under-Lyne - 104 unoccupied places
- Denton, Droylsden & Audenshaw - 128 unoccupied places
- Dukinfield, Stalybridge & Mossley – 116 unoccupied places
- Hyde & Longdendale – 126 unoccupied places

This represents an 82% occupancy level across the borough.

7. Objectives of the Review

7.1 The main objectives of the review are:

- To reduce the number of surplus places by considering the balance between the supply and projected demand of nursery education places
- To review the provision of nursery places
- To maximise the efficient and effective use of resources

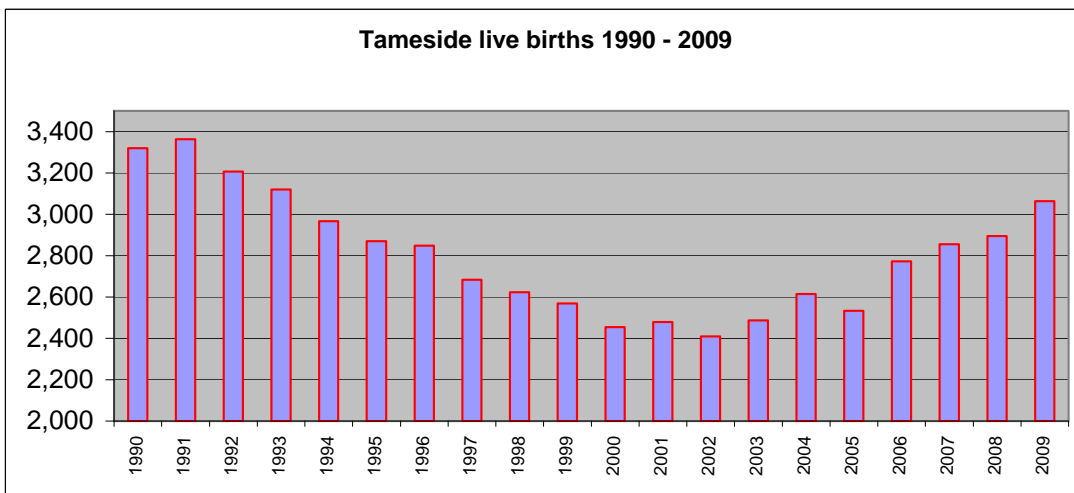
7.2 The review will take into account:

- The demand for places in particular localities
- The need to maintain appropriate levels of denominational provision
- The need to ensure that resources are used cost effectively
- The range of early years provision currently available
- The requirement to secure sufficient childcare

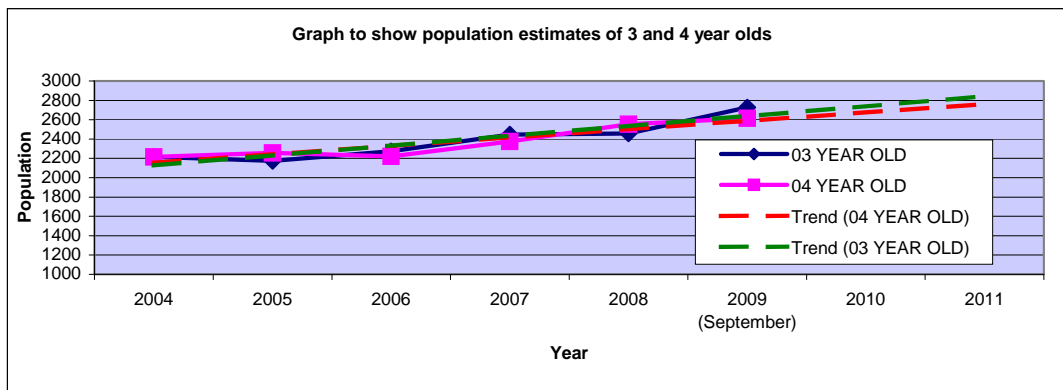
← Formatted: Bullets and Numbering

8. Current Pupil Numbers

8.1. The birth rate in Tameside fell by a significant 25% between 1991 and 2000. However, there has been an upward turn in the birth rate in Tameside overall since 2000 which is concentrated in certain areas of the borough.



8.2 The following graph uses the population figures to provide an estimate of the number of the 3 and 4 year old age group in the coming years. The figures do not take into account any migration in or out of the borough and should not be used in isolation.



8.3 This information illustrates that rising birth rates will cause the number of 3 and 4 year olds in the borough to grow significantly over the next few years leading to a potential increase in demand for free early years education. However as all children in Tameside are able to start full time school in the September of the academic year they become 5, many 4 year olds will be accessing their free entitlement in reception class, effectively meaning there may be further capacity within the maintained sector to deliver this aside from the allocated nursery places. Similarly, the number of 3 year olds should not be calculated in their entirety as children only become eligible the term following their third birthday.

9. Nursery Age Population by Ward

9.1 In December 2009, the total population of Tameside children aged 0 – 4 inclusive was 14,197. The table below illustrates the number of children within each of the age groups residing within each ward and shows that the total number of 3 and 4 year olds account for 37% of the total number of 0 – 4 year olds in Tameside.

Table 2

0-4 Population by Age Group and Ward (December 2009)						
Ward	Under 1	1 Year Old	2 Year Old	3 Year Old	4 Year Old	Total
ASHTON HURST	151	132	142	160	156	741
ASHTON ST MICHAELS	215	181	202	171	159	928
ASHTON WATERLOO	145	134	163	124	122	688
ASHTON ST PETERS	267	230	226	208	194	1125
AUDENSHAW	156	122	118	112	119	627
DENTON NORTH EAST	129	143	147	126	131	676
DENTON SOUTH	126	128	132	133	128	647
DENTON WEST	136	123	104	123	123	609
DROYLSDEN EAST	159	125	134	140	127	685
DROYLSDEN WEST	127	135	152	118	112	644
DUKINFIELD	191	179	168	158	140	836
DUKINFIELD STALYBRIDGE	114	121	118	96	103	552
HYDE GODLEY	183	186	181	177	151	878
HYDE NEWTON	196	180	182	175	159	892
HYDE WERNETH	166	161	159	144	161	791
LONGDENDALE	133	153	126	120	118	650
MOSSLEY	154	146	128	130	108	666
STALYBRIDGE NORTH	187	193	167	171	152	870
STALYBRIDGE SOUTH	136	138	132	148	138	692
TOTALS	3071	2910	2881	2734	2601	14197

10. Nursery Education: Ashton-under-Lyne

10.1. Wards

10.1.1. There are 4 wards within this area:

- Ashton Hurst
- Ashton St Michaels
- Ashton St Peters
- Ashton Waterloo

11. Free Entitlement

11.1 There are a total of 25 settings funded to provide nursery education in this area:

- 15 Maintained school nurseries
- 7 Private day nurseries
- 2 Pre-school playgroups
- 1 Independent school

11.2. There are 3 childrens centres located within this area:

- Rosehill Childrens Centre – a day nursery operates on site
- St Peters Childrens Centre – a day nursery operates on site
- Waterloo Childrens Centre – a pre school operates on site

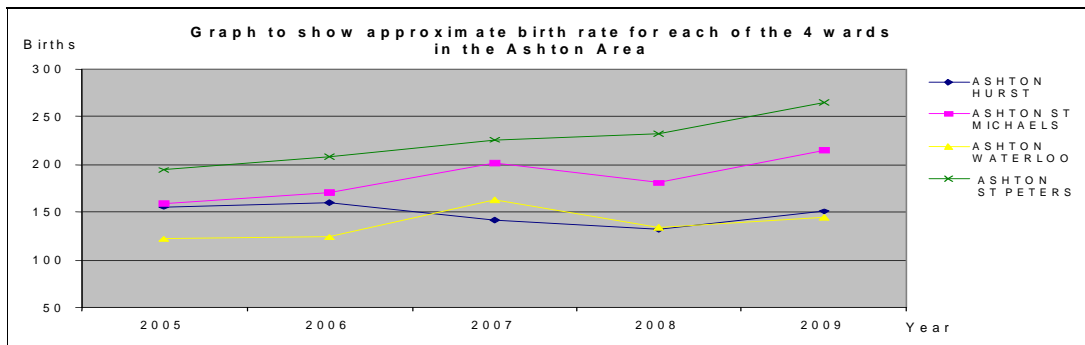
11.3. An estimate of the total number of places in this area is provided in table 3 below:

Area	Maintained places (school nurseries)	Estimated PVI places	Total places	*Estimated number of 4 year olds		
				2009	2010	2011
Ashton-under-Lyne	580	348	928	631	663	726

*Estimated number only based on birth rates

12. Birth Rates

12.1 The following graph shows birth rates for each of the 4 wards within this area since 2005:



12.2. Having experienced a reduction from 2007 – 2008, all 4 wards are now showing an upward

trend in the birth rate.

13. Maintained Nursery Places – Ashton-under-Lyne Area.

13.1 It is the Council's long term aim that all primary schools have their own nursery provision wherever practical. However, this may be linked to other childcare facilities provided through the voluntary and private sectors, the aim being to have 0 to 5 years coverage across the borough, using all types of provision, for nursery education and child care. There are 15 primary schools in this area and all of them have nursery classes delivering the free entitlement.

13.2 The table below shows the maximum number of nursery places that receive funding for each primary school in the Ashton area. The occupancy by 3 and 4 year olds is shown alongside the resulting number of surplus places calculated for January 2008 and 2009.

Table 4

Primary School	Maximum funded places (part time) Jan 09	Nursery occupancy Jan 08 census (part time)		Surplus Places 4 year olds Jan 08	Nursery occupancy Jan 09 census (part time)		Surplus Places 4 year olds Jan 09
		3 year olds	4 year olds		3 year olds	4 year olds	
Broadoak	26	0	26	0	0	26	0
Canon Burrows	52	0	44	8	0	44	8
Canon Johnson	26	1	25	1	0	26	0
Holden Clough	32	0	26	6	0	26	6
Holy Trinity	46	10	29	17	0	43	3
Hurst Knoll	52	0	25	27	2	25	25
Our Lady of Mount Carmel	52	6	29	23	4	22	30
Parochial	40	1	31	9	0	20	20
Rosehill	52	0	48	4	0	46	6
St Christopher's	46	10	30	16	1	32	14
St James'	26	0	22	4	0	23	3
St Peter's	26	1	29	0	0	26	0
The Heys	26	0	25	1	0	25	1
Waterloo	52	0	40	12	0	44	8
West End	26	0	42	0	0	41	0
TOTALS	580	29	471	128	7	469	124

13.3 The occupancy at private day nurseries in the Ashton area is as follows where the majority of places in the maintained sector are taken by 4 year olds and the majority of places available in the PVI sector are taken by 3 year olds.

Table 5

PVI Nursery	Registered places (part time)	Occupancy Spring 2008 (part time)		Occupancy Spring 2009 (part time)	
		3 year olds	4 year olds	3 year olds	4 year olds
Abacus	27	11	3	14	1
Charlestown	63	53	13	51	16
Children 4 Most	24	12	5	11	4
Children 4 Most at St Peters	32	N/a	N/a	23	1
Clockwork	40	26	5	25	8
Rosebuds	16	15	4	17	5
Little Red	60	N/a	N/a	N/a	N/a
Grafton House	28	N/a	N/a	N/a	N/a
Happy Hedgehogs	18	N/a	N/a	N/a	N/a
Tameside College	40	N/a	N/a	N/a	N/a
TOTALS	348	117	30	141	35

N/a: Data not available as the nursery is newly opened or no nursery provision.

14. Proposal to Amend Maintained Nursery Places in Ashton-under-Lyne from September 2011.

14.1. Of the 580 funded places in Ashton 469 nursery classes were occupied during 2009. This represents a 19.1% surplus capacity in the maintained nursery provision. There was also a 22% surplus in January 2008 based on registered places against occupancy. During 2009 there were an estimated 631 four year olds demanding a total of 928 childcare places across all providers, this equates to 1.47 childcare places per child.

14.2. Proposal A: Reduce the number of the maximum funded nursery places at the schools listed in Table 6 and increase the number of the maximum funded nursery places at the schools listed in Table 7 from September 2011.

14.2.1. An implementation of the proposed changes as shown in the tables below will provide a total of 494 nursery places from September 2011 in the Ashton area maintained sector. Table 6 shows the proposed reduction in maximum funded nursery places at 6 Ashton schools. They all have reception PANs of 30. A reduction in the maximum funded nursery place number to 26 will align these schools with the Tameside vision of maintained nursery places to be organised in ratios of 26 part time places to a 30 intake school, in line with staffing ratios of 1:13 for a maximum of 3 terms before Reception.

Primary School	PAN for primary school	Maximum funded nursery places (part time)	Nursery occupancy Jan 08 census (part time)		Nursery occupancy Jan 09 census (part time)		Proposed maximum funded nursery places (part time)
			3 year olds	4 year olds	3 year olds	4 year olds	
Holden Clough	30	32	0	26	0	26	26
Holy Trinity	30	46	10	29	0	43	26
Hurst Knoll	30	52	0	25	2	25	26
Our Lady of Mount Carmel	30	52	6	29	4	22	26
Parochial	30	40	1	31	0	20	26
St Christopher's	30	46	10	30	1	32	26
Totals	180	268	27	170	7	168	156

14.2.2. Table 7 shows the proposed increase in maximum funded nursery places at 2 Ashton schools. They both have reception PANs of 45. An increase in the maximum funded nursery place number to 39 will align these schools with the Tameside vision of maintained nursery places to be organised in ratios of 39 part time places to a 45 intake school, in line with staffing ratios of 1:13 for a maximum of 3 terms before Reception.

Primary School	PAN for primary school	Maximum funded nursery places (part time)	Nursery occupancy Jan 08 census (part time)		Nursery occupancy Jan 09 census (part time)		Proposed maximum funded nursery places (part time)
			3 year olds	4 year olds	3 year olds	4 year olds	
West End	45	26	0	42	0	41	39
Broadoak	45	26	0	26	0	26	39
Totals	90	52	0	68	0	67	78

14.2.3. No change is planned for the schools listed in Table 8 below:

Table 8 No Change or No Nursery Provision						
Primary School	PAN for primary school	Maximum funded nursery places (part time)	Nursery occupancy Jan 08 census (part time)		Nursery occupancy Jan 09 census (part time)	
			3 year olds	4 year olds	3 year olds	4 year olds
Canon Burrows	60	52	0	44	0	44
Canon Johnson	30	26	1	25	0	26
Rosehill	60	52	0	48	0	46
St James'	30	26	0	22	0	23
St Peter's	30	26	1	29	0	26
The Heys	30	26	0	25	0	25
Waterloo	60	52	0	40	0	44
Totals	300	260	2	233	0	234

15. The Distribution of Nursery Places by Ward

15.1. The proposed amendments to nursery places across the Ashton Wards will provide 842 nursery places which equates to 1.33 childcare places per child calculated on 2009 population figures. On estimated population figures for 2011 this equates to 1.15 childcare places per child. A "childcare place per child" ratio less than 1 may indicate gaps in provision. Where the ratio is less than 1.1 further analysis at population super output area level is carried out to ensure that there is enough room for population growth in immediate future years.

15.2. The distribution of proposed places by ward is shown in the following tables 9 – 13:

Table 9 Ashton Hurst Schools and PVIs	
Setting	Proposed Nursery Places
Holden Clough Community Primary School	26
Broad oak Primary School	39
Rosehill Methodist Community Primary School	52
St. Christopher's RC Primary School	26
Rosebuds Day Nursery	16
Total	159

15.3. The 4 year old population for Hurst Ward 2009 is estimated to be 156 allowing 1.01 childcare places per child.

15.4. There are 8 population super output (SOA) areas in Ashton Hurst Ward. Each of the schools is located within its own SOA. The distribution of births in these super output areas from 2002 to 2009 is shown in the following table:

School	SOA	2002	2003	2004	2005	2006	2007	2008	2009
	E01005933	16	29	21	21	23	31	24	22
Broadoak	E01005934	13	21	16	18	13	14	20	20
	E01005935	22	9	15	21	28	14	21	25
Rosehill	E01005936	13	16	11	18	15	11	15	15
	E01005937	23	18	10	21	18	17	19	27
St Christopher's RC	E01005938	16	16	22	12	17	20	22	20
Holden Clough	E01005939	5	9	3	13	21	9	10	10
	E01005940	10	12	13	12	15	9	11	17
Totals		118	130	111	136	150	125	142	156

15.5. The figures show that at no time since 2002 have there been more than 156 births in the Ashton Hurst Ward. The SOAs in which each of the primary schools are situated have experienced no more than 22 live births since 2002. Children born in 2007 will be eligible for a nursery place in 2011/12. From the births given in the table above there will be 1.27 childcare places per child in 2011/12. Of course this calculation does not take migration in and out of the area into account and can only be used as an indicator.

15.6 Significant changes in population due to migration or fluctuating birth rates will be highlighted in ongoing childcare sufficiency assessments and the childcare market managed as appropriate.

Ashton St Michael's Schools and PVIs	
Setting	Proposed Nursery Places
The Heys Primary School	26
Parochial C E Primary School	26
St. James' CE Primary School	26
Our Lady of Mount Carmel Primary School	26
Abacus Day Nursery	27
Clockwork Day Nursery	40
Tameside College Pre School	40
Little Red Day Nursery	60
Total	271

15.7. The 4 year old population for St Michael's Ward 2009 is estimated to be 159 allowing 1.70 childcare places per child.

Ashton St Peter's Schools and PVIs	
Setting	Proposed Nursery Places
Holy Trinity CE Primary School	26
Hurst Knoll St James' CE Primary School	26
Ashton West End Primary School	39
St Peter's CE Primary School	26
Charlestown Day Nursery	63
Grafton House Preparatory School	28
Children 4 Most Day Nursery	24
Children 4 Most at St Peters Day Nursery	32
Total	264

15.8. The 4 year old population for St Peter's Ward 2009 is estimated to be 194 allowing 1.36 childcare places per child.

Table 13	
Ashton Waterloo Schools and PVIs	
Setting	Proposed Nursery Places
Canon Burrows CE Primary School	52
Waterloo Primary School	52
Canon Johnson Primary School	26
Happy Hedgehogs Pre School	18
Total	148

15.9. The 4 year old population for Waterloo Ward 2009 is estimated to be 122 allowing 1.21 childcare places per child.

16. Nursery Education: Denton, Droylsden and Audenshaw

16.1 Wards

16.1.1 There are 6 wards within this area:

- Audenshaw
- Denton North East
- Denton South
- Denton West
- Droylsden East
- Droylsden West

17. Free Entitlement

17.1 There are a total of 36 settings funded to provide nursery education in this area:

- 18 Maintained school nurseries
- 11 Private day nurseries
- 6 Pre-school playgroups
- 1 Childminder

17.2. There are 4 childrens centres located within this area:

- Greenside Childrens Centre – 1 day nursery operates on site
- Denton South Childrens Centre – no formal current nursery provision
- Fairfield Childrens Centre – a pre-school playgroup operates on site
- Denton Childrens Centre - no formal current nursery provision

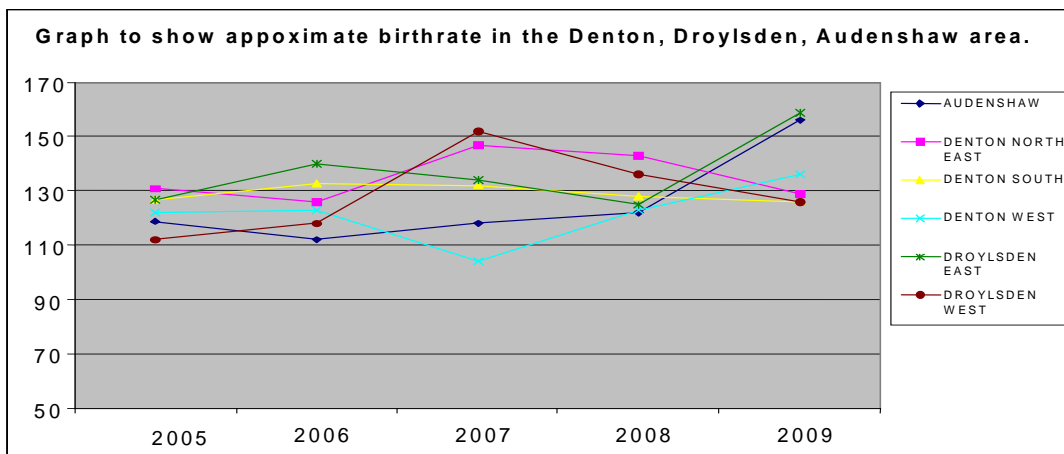
17.3 An estimate of the total number of places in this area is provided in the following table:

Area	Maintained places (school nurseries)	Estimated PVI places	Total places	*Estimated number of 4 year olds		
				2009	2010	2011
Denton, Droylsden & Audenshaw	828	609	1437	740	757	789

* Estimated number only based on birth rates

18. Birth Rates

18.1. The following graph shows birth rates for each of the 6 wards within this area since 2005.



19. Maintained Nursery Places – Denton, Droylsden and Audenshaw Area.

19.1 It is the Council's long term aim that all primary schools have their own nursery provision wherever practical. However, this may be linked to other childcare facilities provided through the voluntary and private sectors, the aim being to have 0 to 5 years coverage across the borough, using all types of provision, for nursery education and child care. There are 21 primary schools in this area and 18 of them have nursery classes delivering the free entitlement. Table 15 shows the occupancy and associated surplus places for 4 year olds in January 2008 and 2009:

Table 15

Primary School	Maximum Funded places (part time) Jan 09	Nursery occupancy Jan 08 census (part time)		Surplus Places 4 year olds Jan 08	Nursery occupancy Jan 09 census (part time)		Surplus Places 4 year olds Jan 09
		3 year olds	4 year olds		3 year olds	4 year olds	
Corrie	52	8	28	24	0	39	13
Dane Bank	34	4	28	6	0	41	0
Greswell	52	0	42	10	0	43	9
Linden Road	52	0	26	26	0	31	21
Manor Green	52	0	47	5	0	50	2
Russell Scott	52	0	52	0	0	38	14
St John Fisher	26	0	21	5	0	24	2
St Marys RC	52	0	34	18	0	31	21
Denton West End	52	0	53	0	0	60	0
Fairfield Road	39	8	28	11	0	40	0
Greenside	52	0	59	0	0	59	0
Manchester Road	26	N/a	N/a	N/a	0	13	13
Moorside Primary	52	0	45	7	0	52	0
St Marys CE	26	0	40	0	0	25	1
St Stephens RC	52	0	50	2	0	39	13
Aldwyn	39	14	25	14	0	36	3
Poplar Street	66	8	38	28	0	45	21
St Annes RC	52	5	26	26	2	32	20
Audenshaw Primary	N/a	N/a	N/a	N/a	N/a	N/a	N/a
St Stephens CE	N/a	N/a	N/a	N/a	N/a	N/a	N/a
St Anne's Primary	N/a	N/a	N/a	N/a	N/a	N/a	N/a
TOTALS	828	47	642	182	2	698	153

N/a: Data not available as the nursery is newly opened or no nursery provision.

19.2. The occupancy at private day nurseries is as follows:

Table 16

PVI Nursery	Registered places (part time)	Occupancy Spring 2008 (part time)		Occupancy Spring 2009 (part time)	
		3 year olds	4 year olds	3 year olds	4 year olds
Children 4 Most at Squirrels Wood	24	21	5	27	7
Rocking Horse	17	18	0	16	4
Busy Kids	23	21	8	24	4
Georgie Porgies	55	25	5	22	8
Grosvenor House	32	22	7	24	2
The Bungalow	34	16	1	19	1
Manor Green	36	6	3	10	0
Lollipop	37	N/a	N/a	N/a	N/a
Greenside Day Nursery	36	23	2	17	3
Little Peacocks	30	N/a	N/a	N/a	N/a
Mini Marvels	34	N/a	N/a	N/a	N/a
Pixies Playgroup	32	N/a	N/a	N/a	N/a
Stepping Stones	16	N/a	N/a	N/a	N/a
Windmill Lane	32	N/a	N/a	N/a	N/a
Fairfield	40	N/a	N/a	N/a	N/a
Sunshine	26	N/a	N/a	N/a	N/a
Twinkle Star	30	N/a	N/a	N/a	N/a
Childminder	2	N/a	N/a	N/a	N/a
TOTALS	536	152	31	159	29

N/a: Data not available as the nursery is newly opened or no nursery provision.

20. Proposal to Amend Maintained Nursery Places in Denton, Droylsden and Audenshaw Area from September 2011.

20.1. Of the 828 funded places in Denton, Droylsden and Audenshaw 698 nursery classes were occupied during 2009. This represents a 15.71% surplus capacity in the maintained nursery provision. There was also a 22.46% surplus in January 2008 based on registered places against occupancy. During 2009 there were an estimated 740 four year olds demanding a total of 1,364 childcare places across all providers, this equates to 1.84 childcare places per child.

20.2. Proposal B: Reduce the maximum funded number of nursery places at the schools listed in Table 17 and increase the maximum funded number of nursery places at the school listed in Table 18 from September 2011.

An implementation of the proposed changes as shown in tables 17 and 18 will provide a total of 715 nursery places from September 2011 in the Denton, Droylsden and Audenshaw area maintained sector. Table 17 shows the proposed reduction in maximum funded nursery places at 3 Denton schools and 1 Audenshaw school. Table 18 shows the proposed increase at 1 Droylsden school. Dane Bank, St Mary's RC and St Anne's RC have reception PANs of 30 and Poplar Street and Fairfield Road have reception PANs of 60. A change in the maximum funded nursery place numbers to 26 and 52 respectively will align these schools with the Tameside vision of maintained nursery places to be organised in ratios of 26 part time places to a 30 intake school and 52 part time places to a 60 intake school, in line with staffing ratios of 1:13 for a maximum of 3 terms before Reception.

Table 17 Proposed Reduction in Maximum Funded Part Time Nursery Places							
Primary School	PAN for primary school	Maximum funded nursery places (part time)	Nursery occupancy Jan 08 census (part time)		Nursery occupancy Jan 09 census (part time)		Proposed maximum funded nursery places (part time)
			3 year olds	4 year olds	3 year olds	4 year olds	
Dane Bank	30	34	4	28	0	41	26
St Marys RC	30	52	0	34	0	31	26
St Annes RC	30	52	5	26	2	32	26
Poplar Street	60	66	8	38	0	45	52
Linden Road	30	52	0	26	0	31	26
Totals	180	256	17	152	2	180	156

Table 18 Proposed Increase in Maximum Funded Part Time Nursery Places							
Primary School	PAN for primary school	Maximum funded nursery places (part time)	Nursery occupancy Jan 08 census (part time)		Nursery occupancy Jan 09 census (part time)		Proposed maximum funded nursery places (part time)
			3 year olds	4 year olds	3 year olds	4 year olds	
Fairfield Road	60	39	8	28	0	40	52
Totals	60	39	8	28	0	40	52

20.3. No change is planned for the schools listed in Table 19 below:

Table 19 No Change or No Nursery Provision							
Primary School	PAN for primary school	Maximum funded nursery places (part time)	Nursery occupancy Jan 08 census (part time)		Nursery occupancy Jan 09 census (part time)		
			3 year olds	4 year olds	3 year olds	4 year olds	
Greswell	60	52	0	42	0	43	
Corrie	60	52	8	28	0	39	
Manor Green	60	52	0	47	0	50	
Russell Scott	60	52	0	52	0	38	
St John Fisher	26	26	0	21	0	24	
Denton West End	60	52	0	53	0	60	
Greenside	60	52	0	59	0	59	
Manchester Road	60	26*	N/a	N/a	0	13	
Moorside Primary	60	52	0	45	0	52	
St Marys CE	30	26	0	40	0	25	
St Stephens RC	60	52	0	50	0	39	
Aldwyn	45	39	14	25	0	36	
Audenshaw	30	N/a	N/a	N/a	N/a	N/a	
St Annes, Denton	30	N/a	N/a	N/a	N/a	N/a	
St Stephen's CE	30	N/a	N/a	N/a	N/a	N/a	
Totals	731	507	22	462	0	478	

N/a: Data not available as the nursery is newly opened or no nursery provision.

*Manchester Road Nursery building is unable to accommodate more than 26 part-time places.

21. The Distribution of Nursery Places by Ward

21.1. The proposed amendments to nursery places across the Denton, Droylsden and Audenshaw Wards will provide 1,251 nursery places which equates to 1.69 childcare places per child calculated on 2009 population figures. On estimated population figures for 2011 this equates to 1.58 childcare places per child. A "childcare place per child" ratio less than 1 may indicate gaps in provision. However, where the ratio is less than 1.1 further analysis is carried out to ensure that there is enough room for population growth in immediate future years.

21.2. The distribution of proposed places by ward is shown in the following tables 20 - 26:

Table 20	
Denton North East Schools and PVIs	
Setting	Proposed Nursery Places
Russell Scott Primary School	52
St Anne's Primary School	26
Greswell Primary School	52
St Mary's RC Primary School	26
Linden Road Primary School	26
Georgie Porgies Day Nursery	55
Grosvenor House Pre School	32
Stepping Stones Pre School	16
The Bungalow Day Nursery	34
Total	319

21.3. The 4 year old population for Denton North East Ward 2009 is estimated to be 131 allowing 2.43 childcare places per child.

Table 21	
Denton South Schools and PVIs	
Setting	Proposed Nursery Places
St John Fisher Primary School	26
Corrie Primary School	52
Manor Green Primary School	52
Manor Green Day Nursery	36
Pixies Playgroup	32
Mini Marvels Pre School	34
Total	232

21.4. The 4 year old population for Denton South Ward 2009 is estimated to be 128 allowing 1.81 childcare places per child.

Table 22	
Denton West Schools and PVIs	
Setting	Proposed Nursery Places
Dane Bank Primary School	26
Denton West End Primary School	52
Windmill Lane Pre School	32
Busy Kids Day Nursery	23
Total	133

21.5. The 4 year old population for Denton West Ward 2009 is estimated to be 123 allowing 1.08 childcare places per child.

21.6 Both Dane Bank School and Denton West End School are situated in the “Dane Bank” area of Denton. This is a distinct geographical area bounded by the A57 to the north, the M60 and Windmill Lane to the east and the Reddish, Manchester border to the south and west. This area contains 3 complete population super output areas (SOA) and the most densely populated sections of 2 further SOAs.

21.7. The distribution of births in these super output areas from 2002 to 2009 is shown in the following table:

School	SOA	2002	2003	2004	2005	2006	2007	2008	2009
Dane Bank	E01005987	4	3	2	1	7	1	14	11
Denton West End	E01005990	5	3	3	3	4	4	12	10
	E01005985	6	4	3	3	5	2	16	14
	E01005988	1	7	1	3	6	2	8	13
	E01005991	5	2	3	4	6	9	14	16
Totals		21	19	12	14	28	18	64	64

21.8. The figures show that at no time since 2002 have there been more than 64 births in the Dane Bank area of Denton. Not including the PVI provision, the proposed 78 combined maximum funded nursery places at Dane Bank and Denton West End Schools should therefore be adequate provision for Tameside children. Occupancy statistics from Stockport LA for October 2009 show a significant surplus at the 2 closest Reddish nursery settings: Fir Tree Primary School and Reddish Vale Childrens Centre. Fir Tree Primary School has 104 part time nursery places and had just 59 children registered, Reddish Vale has 156 part time places and had just 80 children registered at the time of the census. It is anticipated that an increase in Tameside nursery places at Dane Bank or Denton West End would exacerbate the surplus already experienced in Reddish. Significant changes in population due to migration or fluctuating birth rates will be monitored through ongoing childcare sufficiency assessments and the childcare market will be managed as appropriate.

Droylsden East Schools and PVIs	
Setting	Proposed Nursery Places
Moorside Primary School	52
Fairfield Road Primary School	52
St Mary's C.E. Primary School	26
Fairfield Pre School	40
Lollipop Day Nursery	37
Sunshine Pre School	26
Twinkle Star Pre School	30
Total	263

21.9. The 4 year old population for Droylsden East Ward 2009 is estimated to be 127 allowing 2.07 childcare places per child.

Table 25	
Droylsden West Schools and PVIs	
Setting	Proposed Nursery Places
Manchester Road Primary School	26
St Stephen's RC Primary School	52
Greenside Primary School	52
Greenside Day Nursery	36
Total	166

21.10. The 4 year old population for Droylsden West Ward 2009 is estimated to be 112 allowing 1.48 childcare places per child.

Table 26	
Audenshaw Schools and PVIs	
School	Proposed Nursery Places
St Anne's RC Primary School	26
St Stephen's CE Primary School	N/a
Audenshaw Primary School	N/a
Poplar Street Primary School	52
Aldwyn Primary School	39
Rocking Horse Day Nursery	17
Children 4 Most at Squirrels Wood	24
Little Peacocks Pre School	30
Total	188

N/a: No nursery provision.

21.11. The 4 year old population for Audenshaw Ward 2009 is estimated to be 119 allowing 1.57 childcare places per child.

22. Nursery Education: Dukinfield, Stalybridge and Mossley

22.1 Wards

22.1.1. There are 5 wards within this area:

- Dukinfield
- Dukinfield Stalybridge
- Mossley
- Stalybridge North
- Stalybridge South

23. Free Entitlement

23.1. There are a total of 31 settings funded to provide nursery education in this area:

- 17 Maintained school nurseries
- 9 Private day nurseries
- 4 Pre-school playgroup
- 1 Independent school

23.2. There are 5 childrens centres located within this area:

- Dukinfield Childrens Centre – a maintained nursery operates on site
- Ridgehill Childrens Centre – a day nursery operates on site
- Micklehurst Childrens Centre – no formal nursery provision
- Millbrook Childrens Centre - no formal nursery provision
- Lyndhurst Childrens Centre – a maintained nursery operates on site

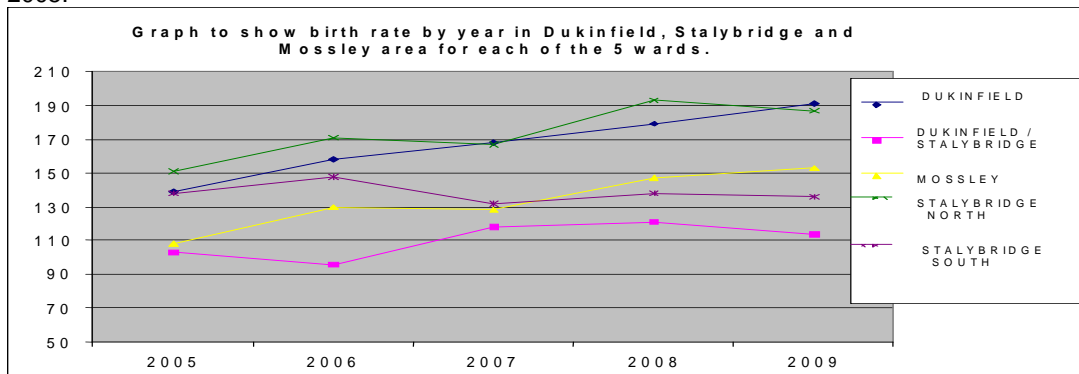
23.3. An estimate of the total number of places in this area is provided in the table below:

Area	Maintained places (school nurseries)	Estimated PVI places	Total places	*Estimated number of 3 & 4 year olds		
				2010	2011	2012
Dukinfield, Stalybridge & Mossley	669	481	1150	641	705	720

* Estimated number only based on birth rates

24. Birth Rates

24.1. The following graph shows birth rates for each of the 5 wards within this area since 2005.



25. Maintained Nursery Places – Dukinfield, Stalybridge and Mossley.

25.1. It is the Council's long term aim that all primary schools have their own nursery provision wherever practical. However, this may be linked to other childcare facilities provided through the voluntary and private sectors, the aim being to have 0 to 5 years coverage across the borough, using all types of provision, for nursery education and child care. There are 22 primary schools in this area and 17 of them have nursery classes delivering the free entitlement. Table 28 shows the maximum number of nursery places that receive funding for each primary school in the Dukinfield, Stalybridge and Mossley area. The occupancy by 3 and 4 year olds is shown alongside the resulting number of surplus places calculated for January 2008 and 2009.

Table 28							
Primary School	Maximum funded places (part time) Jan 09	Nursery occupancy Jan 08 census (part time)		Surplus Places 4 year olds Jan 08	Nursery occupancy Jan 09 census (part time)		Surplus Places 4 year olds Jan 09
		3 year olds	4 year olds		3 year olds	4 year olds	
Broadbent Fold	26	0	24	2	0	15	11
Lyndhurst	26	5	21	5	13	13	13
Ravensfield	52	0	29	23	0	31	21
St Johns CE	26	0	26	0	0	26	0
Yew Tree / St Marys	94	10	84	10	18	76	18
Arlies	26	10	24	2	8	18	8
Gorse Hall	52	0	52	0	0	45	7
Millbrook	52	8	36	16	10	38	14
Ridgehill	52	10	42	10	12	39	13
St Peters RC	39	4	33	6	10	26	13
St Raphaels RC	26	4	20	6	0	26	0
Wildbank	52	14	26	26	0	37	15
Livingstone	26	3	21	5	0	18	8
Micklehurst	34	4	19	15	0	12	22
Milton St Johns	34	0	33	1	0	30	4
St Georges CE	26	0	20	6	0	16	10
St Josephs RC	26	3	19	7	0	16	10
Stalyhill Infant	N/a	N/a	N/a	N/a	N/a	N/a	N/a
Stalyhill Junior	N/a	N/a	N/a	N/a	N/a	N/a	N/a
Buckton Vale	N/a	N/a	N/a	N/a	N/a	N/a	N/a
St Paul's C.E	N/a	N/a	N/a	N/a	N/a	N/a	N/a
St Mary's R.C	N/a	N/a	N/a	N/a	N/a	N/a	N/a
TOTALS	669	75	529	140	71	482	187

N/a No nursery provision.

25.2. The occupancy at private day nurseries is as follows:

Table 29					
PVI Nursery	Registered places (part time)	Occupancy Spring 2008 (part time)		Occupancy Spring 2009 (part time)	
		3 year olds	4 year olds	3 year olds	4 year olds
Jeffreys Corner	16	26	3	23	9
Rainbow	35	14	5	9	3
Castle Top	23	19	5	24	7
Firestation	80	N/a	N/a	5	1
Bright Futures	18	18	23	7	16
Chatterbox	76	37	0	30	6
Gorse Hall Kids	64	N/a	N/a	N/a	N/a
Hill Top	30	33	7	34	12
Quackers Kids	32	4	0	12	3

Busy Bees	22	N/a	N/a	N/a	N/a
Little Tigers	30	N/a	N/a	N/a	N/a
Panda	25	N/a	N/a	N/a	N/a
Little Munchkins	30	N/a	N/a	N/a	N/a
Trinity Independent	20	4	2	6	6
TOTALS	501	155	45	150	63

N/A Data not available as the nursery is newly opened.

26. Proposals to amend maintained nursery places in Dukinfield, Stalybridge and Mossley area from September 2011.

26.1. Of the 669 funded places in Dukinfield, Stalybridge and Mossley area, 482 nursery classes were occupied during 2009. This represents a 27.95% surplus capacity in the maintained nursery provision. Similarly there was a 20.92% surplus in January 2008 based on registered places against occupancy. During 2009 there were an estimated 641 four year olds demanding a total of 1170 childcare places across all providers, this equates to 1.82 childcare places per child.

26.2. Proposal C: Reduce the maximum funded number of nursery places at the schools listed in Table 30 from September 2011 and increase the maximum funded number of nursery places at the school listed in Table 31 from September 2011.

26.2.1. An implementation of the proposed changes as shown in the tables below will provide a total of 598 nursery places from September 2011 in the Dukinfield, Stalybridge and Mossley area maintained sector. Table 30 shows the proposed reduction in maximum funded nursery places at 1 Dukinfield school, 4 Stalybridge schools and 2 Mossley schools. Their reception PANs range from 70 down to 20. A reduction in the maximum funded nursery place numbers to 26 for five of the schools, 39 for 1 of the schools and 65 for the remaining school will align these schools with the Tameside vision of maintained nursery places to be organised in ratios of 26 part time places to a 30 intake school, 39 part time places to a 45 intake school and 65 part time places for a 70 intake school, in line with staffing ratios of 1:13 for a maximum of 3 terms before Reception.

Primary School	PAN for primary school	Maximum funded nursery places (part time)	Nursery occupancy Jan 08 census (part time)		Nursery occupancy Jan 09 census (part time)		Proposed maximum funded nursery places (part time)
			3 year olds	4 year olds	3 year olds	4 year olds	
Yew Tree / St Marys*	100(70+30)	94	10	84	18	76	91(65+26)
Milton St Johns	30	34	0	33	0	30	26
Micklehurst	30	34	4	19	0	12	26
Millbrook	30	52	8	36	10	38	26
St Peters RC	30	39	4	33	10	26	26
Wildbank	30	52	14	26	0	37	26
Totals	250	305	40	231	38	219	221

*Yew Tree / St Mary's nursery operates on the adjacent Acorn Nursery site. Acorn Nursery also provides 30 part time nursery education places for Oakdale Special School pupils.

Primary School	PAN for primary school	Maximum funded nursery places (part time)	Nursery occupancy Jan 08 census (part time)		Nursery occupancy Jan 09 census (part time)		Proposed maximum funded nursery places (part time)
			3 year olds	4 year olds	3 year olds	4 year olds	
Arlies	45	26	10	24	8	18	39
Totals	45	26	10	24	8	18	39

26.2.4. No change is planned for the schools listed in table 32 as follows:

Primary School	PAN for primary school	Maximum funded nursery places (part time)	Nursery occupancy Jan 08 census (part time)		Nursery occupancy Jan 09 census (part time)	
			3 year olds	4 year olds	3 year olds	4 year olds
Broadbent Fold	30	26	0	24	0	15
Lyndhurst	30	26	5	21	13	13
Ravensfield	60	52	0	29	0	31
St Johns CE	30	26	0	26	0	26
St Georges CE	30	26	0	20	0	16
Gorsehall	60	52	0	52	0	45
St Raphaels RC	26	26	4	20	0	26
Livingstone	20	26	3	21	0	18
St Josephs RC	20	26	3	19	0	16
Ridgehill	60	52	10	42	12	52
Stalyhill Infant	60	N/a	N/a	N/a	N/a	N/a
Stalyhill Junior	N/a	N/a	N/a	N/a	N/a	N/a
Buckton Vale	40	N/a	N/a	N/a	N/a	N/a
St Paul's CE	45	N/a	N/a	N/a	N/a	N/a
St Mary's RC	30	N/a	N/a	N/a	N/a	N/a
Totals	541	338	25	274	25	258

N/a: Data not available as the nursery is newly opened or no nursery provision.

27. The Distribution of Nursery Places by Ward

27.1 The proposed amendments to nursery places across the Dukinfield, Stalybridge and Mossley Wards will provide 1099 nursery places which equates to 1.71 childcare places per child. On estimated population figures for 2011 this equates to 1.52 childcare places per child. A "childcare place per child" ratio less than 1 may indicate gaps in provision. Where the ratio is less than 1.1 further analysis is carried out to ensure that there is enough room for population growth in immediate future years.

27.2. The distribution of proposed places by ward is shown in the following tables 33 – 37:

Table 33	
Dukinfield Schools and PVIs	
Setting	Proposed Nursery Places
Ravensfield Primary School	52
Lyndhurst Primary School	26
Busy Bees Pre School	22
Little Tigers Pre School	30
Rainbow Day Nursery	35
Jeffreys Corner Day Nursery	16
Total	181

27.3. The 4 year old population for Dukinfield Ward 2009 is estimated to be 140 allowing 1.29 childcare places per child.

Table 34	
Dukinfield / Stalybridge Schools and PVIs	
School	Proposed Nursery Places
Broadbent Fold Primary School	26
St Mary's RC Primary School and Yew Tree Primary School	65
St John's CE Primary School	26
Gorse Hall Primary School	52
St Peter's RC Primary School	26
Gorse Hall Kids Day Nursery	64
Trinity Independent School	20
Total	305

N/a: No nursery provision.

27.4. The 4 year old population for Dukinfield / Stalybridge Ward 2009 is estimated to be 103 allowing 2.96 childcare places per child.

Table 35	
Stalybridge North Schools and PVIs	
School	Proposed Nursery Places
Millbrook Primary School	26
Buckton Vale Primary School	N/a
Arlies Primary School	39
Ridgehill Primary School	52
Bright Futures Day Nursery	18
Little Munchkins Pre School	30
Quackers Kids Day Nursery	32
Total	197

N/a: No nursery provision.

27.5. The 4 year old population for Stalybridge North Ward 2009 is estimated to be 152 allowing 1.29 childcare places per child.

Table 36	
Stalybridge South Schools and PVIs	
School	Proposed Nursery Places
St Paul's CE Primary School	N/a
Wildbank Community School	26
Stalyhill Infant / Junior Schools	N/a
St Raphael's RC Primary School	26
Chatterbox Day Nursery	76
Hill Top Day Nursery	30
Total	158

N/a: No nursery provision.

27.6. The 4 year old population for Stalybridge South Ward 2009 is estimated to be 138 allowing 1.14 childcare places per child.

Table 37	
Mossley Schools and PVIs	
School	Proposed Nursery Places
St George's CE Primary School	26
Milton St John's Primary School	26
Micklehurst All Saints Primary School	26
Livingstone Primary School	26
St Joseph's RC Primary School	26
Castle Top Day Nursery	23
Panda Pre School	25
Firestation Day Nursery	80
Total	258

26.7. The 4 year old population for Mossley Ward 2009 is estimated to be 108 allowing 2.38 childcare places per child.

28. Nursery Education: Hyde and Longdendale Area

28.1 Wards

28.1.1. There are 4 wards within this area:

- Hyde Godley
- Hyde Newton
- Hyde Werneth
- Longdendale

29. Free Entitlement

29.1. There are a total of 27 settings funded to provide nursery education in this area:

- 14 Maintained school nurseries
- 7 Private day nurseries
- 6 Pre-school playgroups

29.2. There are 3 childrens centres located within this area:

- Melandra, Hattersley Childrens Centre – 1 day nursery operates on site
- Hyde Childrens Centre – 1 day nursery operates on site
- Hollingworth Childrens Centre – no nursery provision on site

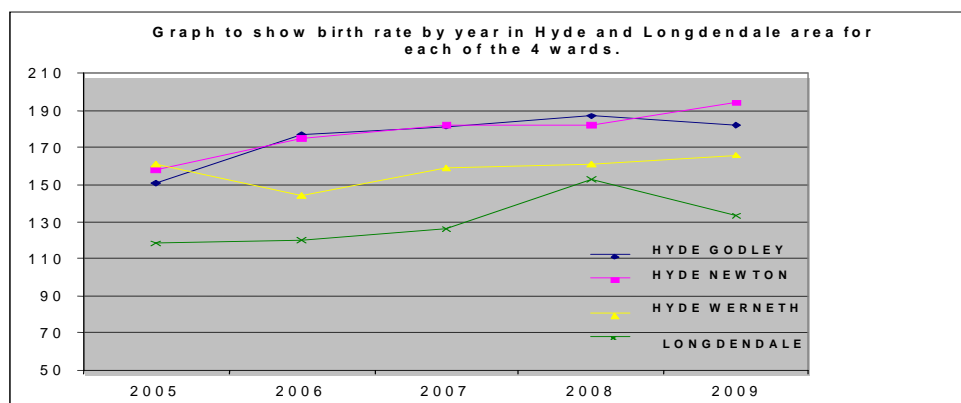
29.3. An estimate of the total number of places in this area is provided in the table below:

Area	Maintained places (school nurseries)	Estimated PVI places	Total places	*Estimated number of 3 & 4 year olds		
				2010	2011	2012
Hyde and Longdendale	546	200	746	589	611	649

*Estimated number only based on birth rates

30. Birth Rates

30.1 The graph below shows birth rates for each of the 4 wards within this area since 2005.



31. Maintained Nursery Places – Hyde and Longdendale Area.

31.1. It is the Council's long term aim that all primary schools have their own nursery provision wherever practical. However, this may be linked to other childcare facilities provided through the voluntary and private sectors, the aim being to have 0 to 5 years coverage across the borough, using all types of provision, for nursery education and child care. There are 16 primary schools in this area and 14 of them have nursery classes delivering the free entitlement. Table 39 below shows the maximum number of nursery places that receive funding for each primary school in the Hyde and Longdendale area. The occupancy by 3 and 4 year olds is shown alongside the resulting number of surplus places calculated for January 2008 and 2009:

Table 39

Primary School	Maximum funded places (part time) Jan 09	Nursery occupancy Jan 08 census (part time)		Surplus Places 4 year olds Jan 08	Nursery occupancy Jan 09 census (part time)		Surplus Places 4 year olds Jan 09
		3 year olds	4 year olds		3 year olds	4 year olds	
Bradley Green	26	0	24	2	0	17	9
Dowson	52	N/a	N/a	N/a	5	47	5
Flowery Field	52	0	49	3	9	38	14
Gee Cross Holy Trinity	26	N/a	N/a	N/a	0	26	0
Godley	26	0	26	0	0	26	0
Greenfield	39	10	39	0	6	33	6
Leigh	39	3	47	0	0	37	2
Oakfield	26	0	25	1	4	22	4
St Georges CE	26	6	43	0	0	27	0
St Pauls RC	26	6	31	0	0	31	0
Arundale	52	6	18	34	0	29	23
Pinfold	78	0	38	40	0	37	41
St James RC	26	1	12	14	4	12	14
Hollingworth	52	0	20	32	0	18	34
Mottram CE	N/a	N/a	N/a	N/a	N/a	N/a	N/a
Broadbottom CE	N/a	N/a	N/a	N/a	N/a	N/a	N/a
TOTALS	546	32	372	126	28	400	152

N/a: Data not available as the nursery is newly opened or no nursery provision.

31.2. The occupancy at private day nurseries is as follows:

Table 40

PVI Nursery	Registered places (part time)	Occupancy Spring 2008 (part time)		Occupancy Spring 2009 (part time)	
		3 year olds	4 year olds	3 year olds	4 year olds
Thornccliffe	9	19	1	10	12
Children 4 Most at Flowery Field	16	23	0	16	4
Jigsaws	24	14	1	17	4
Treetops at Brookbank	24	25	7	31	6
Melandra	15	18	7	12	4
NCC Playgroup	20	N/a	N/a	N/a	N/a
Rainbow Corner	25	N/a	N/a	N/a	N/a
Broadbottom	21	N/a	N/a	N/a	N/a
Little Gems	25	N/a	N/a	N/a	N/a
Longdendale Pre school	21	N/a	N/a	N/a	N/a
TOTALS	200	99	16	86	30

N/a Data not available as the nursery is newly opened.

31.3. From the figures in table 40, it could be assumed that children move to maintained nurseries once they are old enough as there are few 4 year olds currently accessing Nursery Education Grant (NEG) in these private day nurseries. Similarly children may also access nurseries in other areas.

32. Proposal to Amend Maintained Nursery Places in Hyde and Longdendale area from September 2011.

32.1. Of the 546 funded places in Hyde and Longdendale, 400 nursery classes were occupied during 2009. This represents a 26% surplus capacity in the maintained nursery provision. Similarly there was a 31% surplus in January 2008 based on registered places against occupancy. During 2009 there were an estimated 589 four year olds demanding a total of 746 childcare places across all providers, this equates to 1.26 childcare places per child.

32.2. Proposal D: Reduce the number of maximum funded nursery places at the schools listed in Table 41 from September 2011.

32.2.1 An implementation of the proposed changes as shown in the tables below will provide a total of 520 nursery places from September 2011 in the Hyde and Longdendale area maintained sector. Table 41 shows the proposed reduction in maximum funded nursery places at 2 Hyde schools and 1 Longdendale school. Two have reception PANs of 30 and 1 has a reception PAN of 60. A reduction in the maximum funded nursery place numbers to 26 and 52 will align these schools with the Tameside vision of maintained nursery places to be organised in ratios of 26 part time places to a 30 intake school and 52 part time places to a 60 intake school, in line with staffing ratios of 1:13 for a maximum of 3 terms before Reception.

Primary School	PAN for primary school	Maximum funded nursery places (part time)	Nursery occupancy Jan 08 census (part time)		Nursery occupancy Jan 09 census (part time)		Proposed maximum funded nursery places (part time)
			3 year olds	4 year olds	3 year olds	4 year olds	
			Hollingworth	30	52	0	
Arundale	30	52	6	18	0	29	26
Pinfold	60	78	0	38	0	37	52
Totals	120	182	6	76	0	84	104

32.2.2. No change is proposed for the schools listed in the following table 42:

Primary School	PAN for primary school	Maximum funded nursery places (part time)	Nursery occupancy Jan 08 census (part time)		Nursery occupancy Jan 09 census (part time)	
			3 year olds	4 year olds	3 year olds	4 year olds
			Bradley Green	30	26	0
Dowson	60	52	N/a	N/a	5	47
Flowery Field	60	52	0	49	9	38
Gee Cross Holy Trinity	30	26	N/a	N/a	0	26
Godley	30	26	0	26	0	26
Greenfield	45	39	10	39	6	33
Leigh	45	39	3	47	0	37

Oakfield	30	26	0	25	4	22
St Georges CE	30	26	6	43	0	27
St Pauls RC	30	26	6	31	0	31
Arundale	30	52	6	18	0	29
St James RC	20	26	1	12	4	12
Broadbottom CE	15	N/a	N/a	N/a	N/a	N/a
Totals	455	416	32	314	28	345

N/a: Data not available as the nursery is newly opened or no nursery provision.

33. The Distribution of Nursery Places by Ward

33.1. The proposed amendments to nursery places across the Hyde and Longdendale Wards will provide 720 places which equates to 1.22 childcare places per child. On estimated population figures for 2011 this equates to 1.10 childcare places per child. A "childcare place per child" ratio less than 1 may indicate gaps in provision. Where the ratio is less than 1.1 further analysis is carried out to ensure that there is enough room for population growth in immediate future years.

33.2. The distribution of proposed places by ward is shown in the following tables 43 - 48:

Table 43	
Hyde Godley Schools and PVIs	
Setting	Proposed Nursery Places
St James's RC Primary School	26
Pinfold Primary School	52
Godley Primary School	26
Leigh Primary School	39
Greenfield Primary School	39
Tree Tops at Brookbank Nursery	24
NCC Playgroup	20
Rainbow Corner Pre School	25
Total	251

33.3. The 4 year old population for Hyde Godley Ward 2009 is estimated to be 151 allowing 1.66 childcare places per child.

Table 44	
Hyde Newton Schools and PVIs	
Setting	Proposed Nursery Places
Oakfield Primary School	26
Bradley Green Primary School	26
St Paul's RC Primary School	26
Flowery Field Primary School	52
Children 4 Most at Flowery Field Nursery	16
Jigsaws Day Nursery	24
Total	170

33.4. The 4 year old population for Hyde Newton Ward 2009 is estimated to be 159 allowing 1.06 childcare places per child.

33.4. There are 8 population super output (SOA) areas in Hyde Newton Ward. Each of the schools is located within its own SOA. The distribution of births in these super output areas from 2002 to 2009 is shown in the following table:

Table 45

School	SOA	2002	2003	2004	2005	2006	2007	2008	2009
	E01006031	11	15	14	18	23	31	34	27
Oakfield	E01006032	21	8	25	18	14	16	26	25
	E01006033	13	13	17	6	22	23	14	17
Bradley Green	E01006034	21	16	21	20	25	23	28	45
St Paul's RC	E01006035	17	11	15	16	9	10	26	19
Flowery Field	E01006036	23	24	19	14	26	30	31	33
	E01006037	17	12	21	14	9	17	16	6
	E01006038	10	15	18	18	12	16	9	23
Totals		133	114	150	124	140	166	184	195

33.6. The figures show that at no time since 2002 have there been more than 195 births in the Newton area of Hyde. With the exception of 2005 the birth rate has been steadily increasing. The Bradley Green SOA has experienced a large number of births in comparison to surrounding areas however this nursery has been under occupied in 2008 and 2009. This suggests that local residents either do not want to take up maintained nursery education or would prefer to use alternative providers. Four of the SOAs have seen a decline in their birth rates whereas the rest have seen some significant increases. While at present there are enough nursery places including PVI for all children who want them a further increase in the birth rate across all SOAs may cause a shortage in nursery place availability. Significant changes in population due to migration or fluctuating birth rates will be monitored through ongoing childcare sufficiency assessments and the childcare market will be managed as appropriate.

Table 46

Hyde Werneth Schools and PVIs	
Setting	Proposed Nursery Places
St George's C.E	26
Gee Cross Holy Trinity Primary	26
Dowson Primary School	52
Total	104

33.7. The 4 year old population for Hyde Werneth Ward 2009 is estimated to be 161 giving 0.64 childcare places per child. There are currently no PVI nursery providers in this ward. However, Rainbow Corner Pre School in Hyde Godley ward is located close to the border of Hyde Werneth ward and does take some children from Hyde Werneth as does Greenfield Primary School.

33.8. There are 8 population super output areas (SOA) in Hyde Werneth Ward. Each of the schools is located within its own SOA. The distribution of births in these super output areas from 2002 to 2009 is shown in the following table:

Table 47

School	SOA	2002	2003	2004	2005	2006	2007	2008	2009
	E01006039	21	17	24	22	24	31	23	30
	E01006040	24	24	21	28	32	21	33	33
St George's C.E	E01006041	13	21	25	20	25	29	38	33
Gee Cross Holy Trinity	E01006042	7	11	3	10	6	13	17	23
	E01006043	19	6	4	10	9	14	20	26
	E01006044	7	7	12	8	9	4	14	8
	E01006045	7	3	7	9	2	4	9	8
Dowson	E01006046	12	13	9	9	9	8	15	18
Totals		110	102	105	116	116	124	169	179

33.9. The figures show that at no time since 2002 have there been more than 179 births in the Hyde Werneth Ward. However the birth rate in all 8 SOAs have increased year on year. Although

the figures for 2009 indicate that St George's School did not have enough nursery places for its SOA location, the majority of children from that SOA tend to prefer Greenfield Nursery and will travel the short distance to that school located in the adjacent ward. Similarly, a significant number of Werneth Ward residents living close to central Hyde prefer to attend Leigh Nursery in the adjacent ward.

33.10. Significant changes in population due to migration in and out of the area or fluctuating birth rates will be highlighted in ongoing childcare sufficiency assessments and the childcare market managed as appropriate.

Table 48	
Longdendale Schools and PVIs	
Setting	Proposed Nursery Places
Broadbottom	N/a
Arundale	26
Mottram	N/a
Hollingworth	26
Broadbotton Pre school	21
Longdendale Pre school	21
Little Gems	25
Melandra	15
Thornccliffe	9
Total	143

N/a: No nursery provision.

33.11. The 4 year old population for Longdendale Ward 2009 is estimated to be 118 allowing 1.21 childcare places per child.

34. How to Make Your Views Known

34.1. It is important to stress that **no decisions have been made**. Tameside Council wishes to consult widely, particularly with parents, local schools and PVI providers. A response sheet is attached to the back of this document for you to comment on the proposals.

34.2. All those interested are invited to comment in writing, using the attached comment form, to: Michele Roberts, Nursery Education Officer, Services for Children and Young People, Room 2.111A, Council Offices, Wellington Road, Ashton-under-Lyne OL6 6DL
or email michele.roberts@tameside.gov.uk by 12 noon on **Friday 9th July 2010**.

The consultation process will take the following pattern:

35. Consultation Meetings

35.1. Meetings will take place with staff, governors, and parents from primary schools directly affected, local councillors, unions and interested parties. There will be separate meetings for staff, governors and parents. LEA officers will consult with parents on a 1:1 basis at the school meetings.

36. Key Decision Report

36.1. At the end of the 6 week consultation period, the Council will prepare a Key Decision Report for the Cabinet Deputy for Lifelong Learning based on feedback received during the consultation process. At the Key Decision meeting, which will take place in Summer 2010 the Cabinet Deputy will make a decision based on recommendations contained in the Key Decision report. Following the Key Decision, changes in nursery provision will be implemented by the Council in line with decisions made by the Cabinet Deputy.

List of Appendices

- Appendix 1 Primary School Summary of Proposed Changes – Alphabetical Order.
- Appendix 2 List of Private, Voluntary and Independent Providers – Alphabetical Order
- Appendix 3 Primary School Summary of Proposed Changes – Geographical Area
- Appendix 4 List of Private, Voluntary and Independent Providers – Geographical Area
- Appendix 5 **Tameside Nursery Place Review Consultation Response Form**

Appendix 1 Primary School Summary of Proposed Changes – Alphabetical Order

Primary School	Primary School PAN	Current Maximum funded nursery places (part time)	Proposed Maximum funded nursery places (part time)	Increase, reduction or no change in number of places.
Aldwyn	45	39	39	no change
Arlies	45	26	26	no change
Arundale	30	52	26	reduction
Audenshaw	30	No Nursery Provision		
Bradley Green	30	26	26	no change
Broadbent Fold	30	26	26	no change
Broadbottom CE	15	No Nursery Provision		
Broadoak	45	26	39	increase
Buckton Vale	40	No Nursery Provision		
Canon Burrows	60	52	52	no change
Canon Johnson	30	26	26	no change
Corrie	60	52	52	no change
Dane Bank	30	34	26	reduction
Denton West End	60	52	52	no change
Dowson	60	52	52	no change
Fairfield Road	60	39	52	increase
Flowery Field	60	52	52	no change
Gee Cross Holy Trinity	30	26	26	no change
Godley	30	26	26	no change
Gorsehall	60	52	52	no change
Greenfield	45	39	39	no change
Greenside	60	52	52	no change
Greswell	60	52	52	no change
Holden Clough	30	32	26	reduction
Hollingworth	30	52	26	reduction
Holy Trinity, Ashton	30	46	26	reduction
Hurst Knoll	30	52	26	reduction
Leigh	45	39	39	no change
Linden Road	30	52	52	no change
Livingstone	20	26	26	no change
Lyndhurst	30	26	26	no change
Manchester Road	60	26	26	no change
Manor Green	60	52	52	no change
Micklehurst	30	34	26	reduction
Millbrook	30	52	26	reduction
Milton St Johns	30	34	26	reduction
Moorside Primary	60	52	52	no change
Oakfield	30	26	26	no change
Our Lady of Mount Carmel	30	52	26	reduction

Primary School	Primary School PAN	Current Maximum funded nursery places (part time)	Proposed Maximum funded nursery places (part time)	Increase, reduction or no change in number of places.
Pinfold	60	78	52	reduction
Parochial	30	40	26	reduction
Poplar Street	60	66	52	reduction
Ravensfield	60	52	52	no change
Ridgehill	60	52	52	no change
Rosehill	60	52	52	no change
Russell Scott	60	52	52	no change
St Annes, Denton	30	No Nursery Provision		
St Annes RC, Audenshaw	30	52	26	reduction
St Christopher's	30	46	26	reduction
St Georges CE	30	26	26	no change
St James RC	20	26	26	no change
St John Fisher	26	26	26	no change
St Johns CE	30	26	26	no change
St Josephs RC	20	26	26	no change
St Mary's RC	30	No Nursery Provision		
St Marys CE, Droylsden	30	26	26	no change
St Paul's CE	45	No Nursery Provision		
St Pauls RC, Hyde	30	26	26	no change
St Peter's, Ashton	30	26	26	no change
St Peters RC, Stalybridge	30	39	26	reduction
St Raphaels RC	26	26	26	no change
St Stephen's CE, Audenshaw	30	N/a	N/a	no nursery provision
St Stephens RC	60	52	52	no change
Stalyhill Infant	60	No Nursery Provision		
Stalyhill Junior	N/a	No Nursery Provision		
The Heys	30	26	26	no change
Waterloo	60	52	52	no change
West End, Ashton	45	26	39	increase
Wildbank	30	52	26	reduction
Yew Tree / St Marys	100	94	91	reduction
TOTALS	2832	2519	2236	

Appendix 2 List of Private, Voluntary and Independent Providers – Alphabetical Order

Private, Voluntary or Independent Provider	Number of Registered Places
Abacus	27
Bright Futures	18
Broadbottom	21
Busy Bees	22
Busy Kids	23
Castle Top	23
Charlestown	63
Chatterbox	76
Childminder	2
Children 4 Most	24
Children 4 Most at Flowery Field	16
Children 4 Most at Squirrels Wood	24
Children 4 Most at St Peters	32
Clockwork	40
Fairfield	40
Firestation	80
Georgie Porgies	55
Gorse Hall Kids	64
Grafton House	28
Greenside Day Nursery	36
Grosvenor House	32
Happy Hedgehogs	18
Hill Top	30
Jeffreys Corner	16
Jigsaws	24
Little Gems	25
Little Munchkins	30
Little Peacocks	30
Little Red	60
Little Tigers	30
Lollipop	37
Longdendale Pre school	21
Manor Green	36
Melandra	15
Mini Marvels	34
NCC Playgroup	20
Panda	25
Pixies Playgroup	32
Quackers Kids	32
Rainbow	35
Rainbow Corner	25
Rocking Horse	17
Rosebuds	16
Stepping Stones	16
Sunshine	26
Tameside College	40
The Bungalow	34
Thornccliffe	9
Treetops at Brookbank	24
Trinity Independent	20
Twinkle Star	30
Windmill Lane	32
TOTALS	1585

Appendix 3
Primary School Summary of Proposed Changes – Geographical Area

Area 1: Ashton-under-Lyne			
Primary School	Primary School PAN	Current Maximum funded nursery places (part time)	Proposed Maximum funded nursery places (part time)
Holden Clough	30	32	26
Holy Trinity	30	46	26
Hurst Knoll	30	52	26
Our Lady of Mount Carmel	30	52	26
Parochial	30	40	26
St Christopher's	30	46	26
West End, Ashton	45	26	39
Broadoak	45	26	39
Canon Burrows	60	52	52
Canon Johnson	30	26	26
Rosehill	60	52	52
St James'	20	26	26
St Peter's	30	26	26
The Heys	30	26	26
Waterloo	60	52	52
TOTALS	560	580	494

Area 2: Denton, Droylsden and Audenshaw.			
Primary School	Primary School PAN	Current Maximum funded nursery places (part time)	Proposed Maximum funded nursery places (part time)
Dane Bank	30	34	26
Corrie	60	52	39
St Marys RC	30	52	26
St Annes RC, Audenshaw	30	52	26
Poplar Street	60	66	39
Greswell	60	52	52
Linden Road	30	52	52
Manor Green	60	52	52
Russell Scott	60	52	52
St John Fisher	26	26	26
Denton West End	60	52	52
Fairfield Road	60	39	39
Greenside	60	52	52
Manchester Road	60	26	26
Moorside Primary	60	52	52
St Marys CE	30	26	26
St Stephens RC	60	52	52
Aldwyn	45	39	39
Audenshaw	30	N/a	N/a
St Annes, Denton	30	N/a	N/a
St Stephen's CE	30	N/a	N/a
TOTALS	842	828	728

Area 3: Dukinfield, Stalybridge and Mossley			
Primary School	Primary School PAN	Current Maximum funded nursery places (part time)	Proposed Maximum funded nursery places (part time)
Milton St Johns	30	34	26
Micklehurst	30	34	26
Millbrook	30	52	26
Ridgehill	60	52	39
St Peters RC	30	39	26
Wildbank	30	52	26
Broadbent Fold	30	26	26
Lyndhurst	30	26	26
Ravensfield	60	52	52
St Johns CE	30	26	26
St Georges CE	30	26	26
Arlies	45	26	26
Gorsehall	60	52	52
St Raphaels RC	26	26	26
Livingstone	20	26	26
St Josephs RC	20	26	26
Stalyhill Infant	60	N/a	N/a
Stalyhill Junior	N/a	N/a	N/a
Buckton Vale	40	N/a	N/a
St Paul's CE	45	N/a	N/a
St Mary's RC	30	N/a	N/a
Yew Tree / St Marys	100	94	91
TOTALS	836	669	572

Area 4: Hyde and Longdendale			
Primary School	Primary School PAN	Current Maximum funded nursery places (part time)	Proposed Maximum funded nursery places (part time)
Hollingworth	30	52	26
Arundale	30	52	26
Pinfold	60	78	52
Bradley Green	30	26	26
Dowson	60	52	52
Flowery Field	60	52	52
Gee Cross Holy Trinity	30	26	26
Godley	30	26	26
Greenfield	45	39	39
Leigh	45	39	39
Oakfield	30	26	26
St Georges CE	30	26	26
St Pauls RC	30	26	26
Arundale	30	52	52
St James RC	20	26	26
Broadbottom CE	15	N/a	N/a
TOTALS	575	598	520

Appendix 4

List of Private, Voluntary and Independent Providers – Geographical Area.

Area 1: Ashton-under-Lyne	
Private, Voluntary or Independent Provider	Number of Registered Places
Abacus	27
Charlestown	63
Children 4 Most	24
Children 4 Most at St Peters	32
Clockwork	40
Rosebuds	16
Little Red	60
Grafton House	28
Happy Hedgehogs	18
Tameside College	40
TOTALS	348

Area 2: Denton, Droylsden and Audenshaw.	
Private, Voluntary or Independent Provider	Number of Registered Places
Children 4 Most at Squirrels Wood	24
Rocking Horse	17
Busy Kids	23
Georgie Porgies	55
Grosvenor House	32
The Bungalow	34
Manor Green	36
Lollipop	37
Greenside Day Nursery	36
Little Peacocks	30
Mini Marvels	34
Pixies Playgroup	32
Stepping Stones	16
Windmill Lane	32
Fairfield	40
Sunshine	26
Twinkle Star	30
Childminder	2
TOTALS	536

Area 3: Dukinfield, Stalybridge and Mossley.	
Private, Voluntary or Independent Provider	Number of Registered Places
Jeffreys Corner	16
Rainbow	35
Castle Top	23
Firestation	80
Bright Futures	18
Chatterbox	76
Gorse Hall Kids	64
Hill Top	30
Quackers Kids	32
Busy Bees	22
Little Tigers	30
Panda	25
Little Munchkins	30
Trinity Independent	20
TOTALS	501

Area 4: Hyde and Longdendale	
Private, Voluntary or Independent Provider	Number of Registered Places
Thornccliffe	9
Children 4 Most at Flowery Field	16
Jigsaws	24
Treetops at Brookbank	24
Melandra	15
NCC Playgroup	20
Rainbow Corner	25
Broadbottom	21
Little Gems	25
Longdendale Pre school	21
TOTALS	200

Tameside Nursery Place Review

Consultation Response Form

Name:

Address:

Email:

I am (please tick one box below):

PARENT / CARER	<input type="checkbox"/>	SCHOOL GOVERNOR	<input type="checkbox"/>	STAFF MEMBER	<input type="checkbox"/>	PVI PROVIDER	<input type="checkbox"/>
---------------------------	--------------------------	----------------------------	--------------------------	-------------------------	--------------------------	-------------------------	--------------------------

At (please name the school or PVI setting below):

--

<i>I am not in one of the above categories but still wish to comment on the proposals</i>	<input type="checkbox"/>
---	--------------------------

Proposal A	Reduce the number of the maximum funded nursery places at the schools listed in Table 6 and increase the number of the maximum funded nursery places at the schools listed in Table 7 from September 2011.
-------------------	---

Comment (please continue on a separate sheet if necessary)

--

Please turn over to comment on Proposals B, C and D

Proposal B	Reduce the maximum funded number of nursery places at the schools listed in Table 17 <u>and</u> increase the maximum funded number of nursery places at the school listed in Table 18 from September 2011.
Comment (please continue on a separate sheet if necessary)	
Proposal C	Reduce the maximum funded number of nursery places at the schools listed in Table 30 from September 2011 <u>and</u> increase the maximum funded number of nursery places at the school listed in Table 31 from September 2011.
Comment (please continue on a separate sheet if necessary)	
Proposal D	Reduce the number of maximum funded nursery places at the schools listed in Table 41 from September 2011.
Comment (please continue on a separate sheet if necessary)	

Thank you

This document is also available online at <http://www.tameside.gov.uk/schools/organisation/reviews>.

Please send your comments to Michele Roberts, Nursery Education Officer, at Council Offices, Wellington Road, Ashton-under-Lyne, Tameside OL6 6DL by 12 noon on **Friday 9th July 2010**

Any information you provide will be treated in confidence and processed in accordance with requirements under the Data Protection Act 1998.